

G L A S T O N B U R Y

A n n u a l R e p o r t 1 9 9 3 - 1 9 9 4

Vision Statement

Building on over 300 years of tradition and heritage, Glastonbury continues to balance the preservation of its natural resources with the evolving needs of our community.

Through positive community partnerships, careful planning, and professional management, we are committed to the highest levels of responsive and equitable service, integrity, and fiscal responsibility.

Ongoing innovation, regional cooperation, and effective leadership will ensure that Glastonbury will always be a great place to live, learn, work and do business.

Location

Glastonbury is located ten miles southeast of Hartford, southerly of Route 3 and easterly of the Connecticut River and Interstate 91. It is served by the Hartford County Regional Planning Agency and the Capitol Region Council of Governments.

Area

52.5 square miles, 33,600 acres.

Land Use

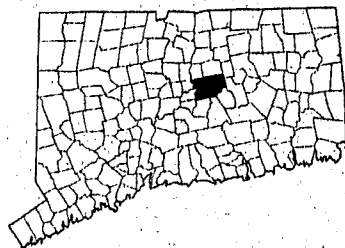
Principally residential (approximately 60% of land area) with suburban to rural densities, compact commercial/employment district (approximately 15%) and significant open space comprising of water company, State forest and Town lands (25%).

Population

Approximately 29,000

Form of Government

Town Council, Town Manager, Board of Finance



Town Hall

2155 Main Street, Glastonbury, Connecticut 06033, located one quarter mile south of Hebron Avenue on the west side of Main Street.

Net Grand List

On October 1, 1994
\$1,504,115,422

Tax Rate

35.2 mills July 1995

Number of Voting Districts

Eight

State Representatives

Sonya Googins (R) 240-8700
Richard Veltri (R) 240-8700

State Senators

Paul R. Munns (R) 240-8800

U.S. Congresswoman

Barbara Kennelly 278-8888

U.S. Senators

Joseph Lieberman 240-3566
Christopher Dodd 240-3470

1995 Government

Town Manager: Richard J. Johnson
Town Council: Paul M. Nye, Chairman;
Kurt P. Cavanaugh, Vice Chairman;
Joe Broder, William M. Dufford,
Thomas F. Flanagan, Charles L. Monaco,
George M. Purilli, Judith A. Stearns
and H. David Megaw

TABLE OF CONTENTS

TOWN COUNCIL 2

TOWN MANAGER 3

LEGAL SERVICES 4

Town Attorney

Probate

BOARD OF EDUCATION 5

COMMUNITY DEVELOPMENT 6

Building Inspection Division

Fire Marshal Division

Health Division

HUMAN SERVICES 8-18

Housing Authority

Parks, Recreation
& Facilities Maintenance

Senior Services

Social Services

Youth and Family Services

Welles-Turner Memorial Library

East Glastonbury Public Library

South Glastonbury Public Library

PUBLIC SAFETY 22-26

Civil Preparedness

Police Department

Board of Fire Commissioners

PHYSICAL SERVICES 28

Engineering Division

Highway Division

Vehicle Maintenance Division

SANITATION 30

Refuse Disposal Division

Water Pollution Control
Division

FINANCIAL ADMINISTRATION 32

Accounting Division

Collector of Revenue

Financial Administration

Property Assessment

Registrars of Voters

Town Clerk

BOARDS AND COMMISSIONS 33-35

FINANCIAL STATEMENTS 36-37

TOWN OFFICIALS 38

TOWN ADMINISTRATION 39

TELEPHONE DIRECTORY 40

Vision Statement

Building on over 300 years of tradition and heritage, Glastonbury continues to balance the preservation of its natural resources with the evolving needs of our community.

Through positive community partnerships, careful planning, and professional management, we are committed to the highest levels of responsive and equitable service, integrity, and fiscal responsibility.

Ongoing innovation, regional cooperation, and effective leadership will ensure that Glastonbury will always be a great place to live, learn, work and do business.

Location

Glastonbury is located ten miles southeast of Hartford, southerly of Route 3 and easterly of the Connecticut River and Interstate 91. It is served by the Hartford County Regional Planning Agency and the Capital Region Council of Governments.

Area

52.5 square miles, 33,600 acres.

Land Use

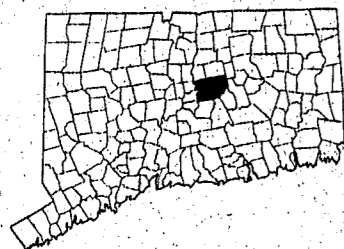
Principally residential (approximately 60% of land area) with suburban to rural densities, compact commercial/employment district (approximately 15%) and significant open space, comprising of water company, State forest and Town lands (25%).

Population

Approximately 29,000.

Form of Government

Town Council, Town Manager, Board of Finance



Town Hall

2155 Main Street, Glastonbury, Connecticut 06033, located one quarter mile south of Hebron Avenue on the west side of Main Street.

Net Grand List

On October 1, 1994
\$1,504,115,422

Tax Rate

35.2 mills July 1995

Number of Voting Districts

Eight

State Representatives

Sonya Gogins (R) 240-8700
Richard Veltri (R) 240-8700

State Senators

Paul R. Munns (R) 240-8800

U.S. Congresswoman

Barbara Kennelly 278-8888

U.S. Senators

Joseph Lieberman 240-3566
Christopher Dodd 240-3470

1995 Government

Town Manager: Richard J. Johnson
Town Council: Paul M. Nye, Chairman;
Kurt P. Cavanaugh, Vice Chairman
Joe Broder, William M. Dufford;
Thomas F. Flanagan, Charles L. Monaco,
George M. Purilli, Judith A. Stearns
and H. David Megaw

TABLE OF CONTENTS

TOWN COUNCIL 2

TOWN MANAGER 3

LEGAL SERVICES 4

Town Attorney

Probate

BOARD OF EDUCATION 5

COMMUNITY DEVELOPMENT 6

Building Inspection Division

Fire Marshal Division

Health Division

HUMAN SERVICES 8-18

Housing Authority

Parks, Recreation
& Facilities Maintenance

Senior Services

Social Services

Youth and Family Services

Welles-Turner Memorial Library

East Glastonbury Public Library

South Glastonbury Public Library

PUBLIC SAFETY 22-26

Civil Preparedness

Police Department

Board of Fire Commissioners

PHYSICAL SERVICES 28

Engineering Division

Highway Division

Vehicle Maintenance Division

SANITATION 30

Refuse Disposal Division

Water Pollution Control
Division

FINANCIAL ADMINISTRATION 32

Accounting Division

Collector of Revenue

Financial Administration

Property Assessment

Registrars of Voters

Town Clerk

BOARDS AND COMMISSIONS 33-35

FINANCIAL STATEMENTS 36-37

TOWN OFFICIALS 38

TOWN ADMINISTRATION 39

TELEPHONE DIRECTORY 40

TOWN ATTORNEY

The Town Ship of State was sailing along merrily on an average sea of municipal activities and controversies, when the "storm" of so-called affordable housing zone change applications hit broadside in early Spring and continued to roil the sea into February, 1995. These are filed under a new Statute intended to make "affordable" housing available in all towns, and to compel it if necessary.

These applications can be filed for substantially greater densities than are allowed under existing zoning, as long as 20% of the total units proposed are "affordable" or "assisted" as defined by statute, and are restricted as to resale price for twenty years.

These applications can be denied only for specified public interest or safety reasons, such as environmental harm or traffic safety, and then only if there is sufficient evidence to prove these reasons, and to show that they are strong enough to outweigh the need for affordable housing in Town. The Town bears the burden of proof in these appeals; just the reverse of normal zoning appeals. Concerns such as density, inadequacy of roads, property values or impact upon schools are not allowable reasons for denial.

Furthermore, existing homes that are available on the market in the same price ranges as "affordable" restricted homes do not count in the Town's "stock" of affordable housing, which must be at least 10% of the total number of homes in Town. There are now about 100 such units available in the \$50,000-\$135,000 range. The 199 units in Welles Village also cannot be counted, since they existed before the new law, U8-30g, was passed in 1992.

There were three such applications for zone changes decided by the Town Council in 1994: the Monaco P.A.D. on Neipsic Road; the Christian Activities Council application on thirty-three acres of MDC land off Hebron Avenue and Keeney Street; and the Glastonbury Affordable Housing Development (D'Addario) application on Welles Street. All three were denied by the council, and all were appealed to the Superior Court.

The Towns don't like this law; there are bills introduced in the Legislature to amend it; but for the time being we must deal with and act accordingly in the best interests of residents and taxpayers.

William S. Rogers
Tyler Cooper & Alcorn
Town Attorney



William S. Rogers
Town Attorney



Donald L. Hamer
Judge of Probate

PROBATE COURT

The Probate Court for the District of Glastonbury provides a broad range of services to the citizens of Glastonbury in accordance with its mandates under the Connecticut General Statutes. These include services to mentally ill and incapable adults as well as adult persons with mental retardation; guardianship of the estate and person of minors; termination of parental rights; adoptions; paternity matters; changes of names; marriage waivers; decedents' estates; trust estates; and performance of marriages. The Court also processes passport applications—more of them, in fact, than virtually all other probate courts in the state.

During the past year the Court has developed a core of volunteer court visitors to assist conservators of the person in monitoring services provided to elderly residents. With the professional assistance and cooperation of the Department of Senior Services, VNA Health Care of Glastonbury, and Connecticut Community Care, Inc., the volunteers participated in a 9-hour training program. As the caseload of conservatorships continues to increase, it is anticipated that the probate courts will be relying increasingly on the services of volunteers to serve as visitors and volunteer conservators.

Donald L. Hamer
Judge of Probate

The Glastonbury Board of Education in partnership with the entire community is committed to providing a dynamic environment where students are educated for today and the future. In concert with statutory responsibilities for the education of our 5,000 students, the Board sets clear and stable policies, oversees the educational planning, the distribution of resources, the maintenance of school facilities, and the staffing of our schools. Together with the Superintendent of Schools, the Board addresses the instructional needs of all students from kindergarten through twelfth grade.

The 1993-94 school year was a period of growth for the Glastonbury Public Schools. The enrollment grew and the projections for future enrollment indicate a continuing increase in the student population as well as an increase in the number of students with special needs. A description of the major areas of accomplishment follows.

Elementary School Building Project

The elementary schools began the preparations for building-wide renovations and additional classroom space. The June, 1993 referendum authorized the expenditure of \$12.2 million to be utilized on the five elementary schools. Planning documents have been submitted to the State Department of Education and the project is underway.

Technology

Significant gains in technology have been made across the system. At the conclusion of the 1993-94 school year, three computer labs were funded. Both the Glastonbury High School and the Gideon Welles School were upgraded to Macintosh labs and a new keyboarding lab was added at Academy School. Every school added telecommunications and laser disc capabilities and the latest



Jacqueline Jacoby
Superintendent of Schools



Suzanne Galvin
Board of Education Chairperson

acquisitions of encyclopedia are in CD-ROM format. The addition of a technology coordinator and the commitment to long range technology planning were key accomplishments in this area.

Quality and Diversity

Public Act 93-263 mandated community involvement in the development of a local plan for improving both the quality and the diversity of our schools. Sixty community members became active members of the Advisory Committee and they invited broad participation from Glastonbury's citizens before they submitted a series of recommendations to the State Board of Education. A representative from the Town Council and the Board of Education served on the Regional Board and helped to shape the voluntary plan for the Greater Hartford region.

Curriculum and Instruction

Gideon Welles' seventh grade was reorganized into a Middle School structure and this staff along with the teachers at Academy School continued to work on interdisciplinary instruction. A formal early literacy intervention program was implemented at two of the five elementary schools and more attention was focused on the prevention of student reading failure. The district's performance on the Connecticut Mastery Tests was very strong. Glastonbury's 4th, 6th and 8th grade students had higher average achievement than students in comparable community school districts. Priorities were set within the Curriculum Review process and staff development was linked to district-wide goals. Five competitive grants were awarded to the Glastonbury Public Schools. These included: the Fulbright Fellowships, the Drug Free Schools Grant, the Inclusion Grant, the Department of Defense Foreign Language Grant, and the Interdistrict Magnet School Grant.

Magnet School

Glastonbury continued to support the development of the East Hartford-Glastonbury Magnet School and the school expanded to K-3 during the 1993-94 school year. In addition, planning efforts continued for the Trinity College Magnet School and the Interdistrict Middle Magnet School.

For the Future

The school district will continue to focus on the elementary school renovation and expansion, technology, strategic planning and curriculum review and development. Programs for the Gifted and Foreign Language in the Elementary Schools will be two additional curriculum priorities for the 1994-95 school year.

Responsible for the operation and management of the Town's land use, building, health, environmental protection and code inspection activities through the following divisions: Community Development, Building, Health and Fire Marshal.

COMMUNITY DEVELOPMENT DIVISION

During the year, the Division initiated two major review projects. First, in conjunction with the Town Planning and Zoning Commission, the ten-year update to the Town's Plan of Development began, followed by the development of the Town's first Comprehensive Groundwater Protection Ordinance.

BUILDING DIVISION

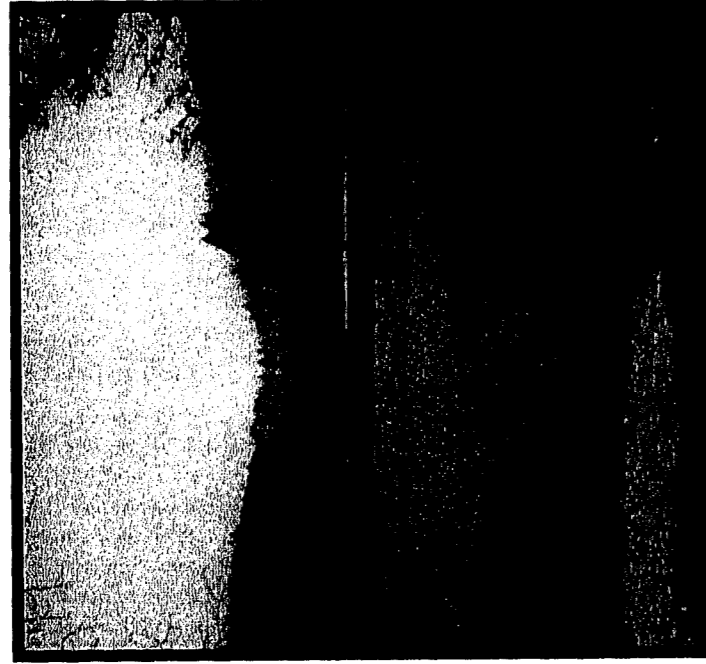
With building activity continuing to increase, the physical layout of the Building, Health and Fire Marshal offices were reconstructed in order to establish a unified permit center. This change provided increased customer service and enhanced the interaction between divisions.

HEALTH DIVISION

The Health Division continued the very successful family preventative health programs by securing the grant from the State of Connecticut. The Division also negotiated the shared use of a sophisticated lead detector instrument with the Town of Manchester. This instrument will greatly assist in the abatement of lead paint problems.

FIRE MARSHAL DIVISION

The Fire Marshal's office was reconfigured resulting in improved service to the public. Additionally, a new part-time inspector completed technical training and commenced inspection work with a focus on apartment units. The Division continued its fire prevention services with specific attention paid to elementary school children.



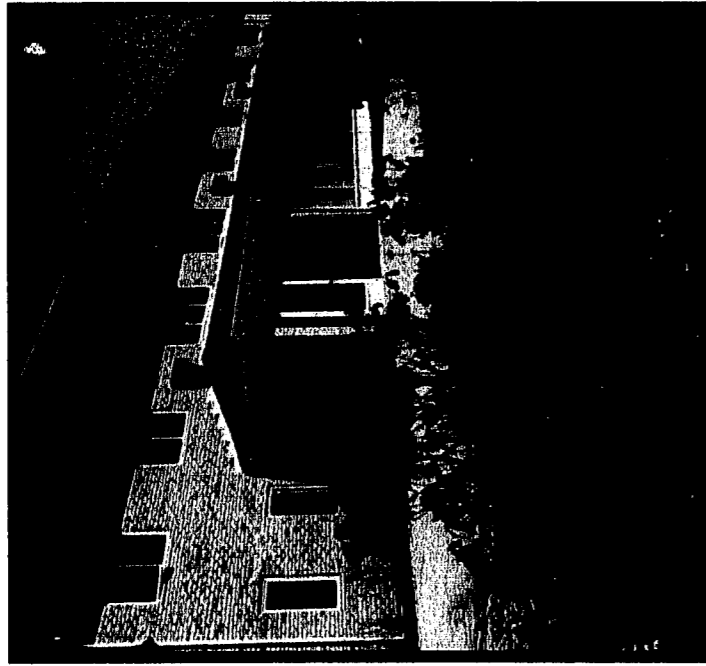
Great Pond Preserve

JANUARY

S	M	T	W	T	F	S
1	2	3	4	5	6	7
8	9	10	11	12	13	14
	Economic Dev. Comm. Fine Arts Comm. Welles-Tanner Library Board Zoning Board of Appeals Recreation Comm. Public Buildings Comm.	Planning & Zoning	Water Pollution Control Authority Community Beautification Committee Youth & Family Services Commission	Fire Commission Conservation Commission		
15	16	17	18	19	20	21
	Municipal Offices Closed Martin Luther King Day	Town Council Board of Education	Local Emergency Planning Committee Housing Authority			
22	23	24	25	26	27	28
	Commission on Aging Safety Committee	Planning & Zoning Board of Finance		Annual Town Meeting GHS 7:30 Conservation Commission		
29	30	31				
		Town Council	Fair Rent Commission			

FEBRUARY						
S	M	T	W	T	F	S
			1	2	3	4
5	6	7	8	9	10	11
12	13	14	15	16	17	18
19	20	21	22	23	24	25
26	27	28				

Call Town Clerk's Office at 652-7616 to verify meeting dates, times, and locations.



Herbert T. Clark House which provides
congregate housing for the elderly.

HOUSING AUTHORITY

The Housing Authority currently administers a total of 439 assisted dwelling units within the Town of Glastonbury. These include the following housing developments:

- Welles Village - 199 Family Units
- Center Village - 50 Elderly Units
- Village Green - 90 Elderly Units
- Herbert T. Clark House - 45 Congregate Units for Frail Elderly
- Hale Farms - 3 Condominium Units for Small Families
- Section 8 - 33 Units of Private Housing Assistance

In addition, the Housing Authority also manages the Still Hill facility on behalf of the Town, and serves as the administering agency for the Town of Glastonbury's Moderate Condo program.

During the past year, the Housing Authority has pursued a number of new projects.

- Established the Welles Activity Council for Youth (W.A.C.Y.), in conjunction with the Town's Department of Youth and Family Services. Through a cooperative effort of the Housing Authority, the Town's Department of Youth and Family Services, and the Glastonbury Police Department, the teen youth of Welles Village were organized into a youth basketball league, which ran for the better part of the summer, and provided a valuable outlet.
- Increased cooperative efforts with the Glastonbury Police Department to prevent crime and improve security for residents.
- Assisted the Welles Village Residents in establishing a tenant council, and provided guidance to the group in the providing of services to the residents in Welles Village.
- Completed the installation of new boilers at Welles Village, resulting in a modern, energy efficient system for the residents.
- For the second year in a row, the Housing Authority Risk Retention Group awarded the Housing Authority of the Town of Glastonbury with an award for loss prevention and control.

FEBRUARY

S	M	T	W	T	F	S
			1	2	3	4
5	6	7	8	9	10	11
	Economic Development Commission Recreation Commission Zoning Board of Appeals	Planning & Zoning	Insurance Advisory Committee Youth & Family Services Commission Water Pollution Control Authority	Fire Commission		Board of Tax Review
12	13	14	15	16	17	18
	Board of Education Welles-Turner Library Board Municipal Offices Closed Lincoln's Birthday	Town Council Board of Tax Review St. Valentine's Day	Housing Authority Fire Arts Commission	Construction Commission Board of Tax Review		
19	20	21	22	23	24	25
	Municipal Offices Closed Presidents' Day	Planning & Zoning Board of Finance	Fire Arts Commission Water Pollution Control Authority Washington's Birthday			
26	27	28				
	Safety Committee Commission on Aging	Town Council				

JANUARY							MARCH						
S	M	T	W	T	F	S	S	M	T	W	T	F	S
1	2	3	4	5	6	7							
8	9	10	11	12	13	14							
15	16	17	18	19	20	21							
22	23	24	25	26	27	28							
29	30	31					26	27	28	29	30	31	

Call Town Clerk's Office at 652-7616 to verify meeting dates, times, and locations.

PARKS AND RECREATION

Providing recreational and cultural opportunities is one of the basic responsibilities of the local government. Town sponsored activities and public open space, parks, and recreation facilities work together to meet the diverse needs of the community and its members. These services provided through the Recreation and Fine Arts Commissions and the Parks and Recreation Department, continue to be among the most popular and utilized services provided for Glastonbury residents, contributing to the quality of community life.

- With funding provided via the Small Business Association Tree Planting Initiative, 53 trees were planted on various town owned properties.
- With responsibility for mowing over 200 acres weekly, the efficiency of the Town's mowing operation was increased dramatically with the purchase of a new 16' wide tractor rotary mower.
- A "Splashmobile" program was successfully implemented. This "bus to the beach" which ran three days each week throughout the summer transported 475 residents to Eastbury Pond for swimming.
- The new mail-in program and activity registration procedure was expanded to include all programs and services.
- The Fine Arts Commission sponsored a well-attended outdoor concert on the Hubbard Green featuring the Hartford Pops Band.
- In November, at public referendum, Glastonbury residents approved the construction of a new outdoor pool at Addison Park. The facility is scheduled to open in June, 1995.
- Buckingham Park construction was completed with the installation of a new handicapped accessible children's playground.



Annual National Hershey Track & Field Youth Program attracts approximately 200 youngsters ages 9 to 12 who compete in a variety of track and field events.

MARCH

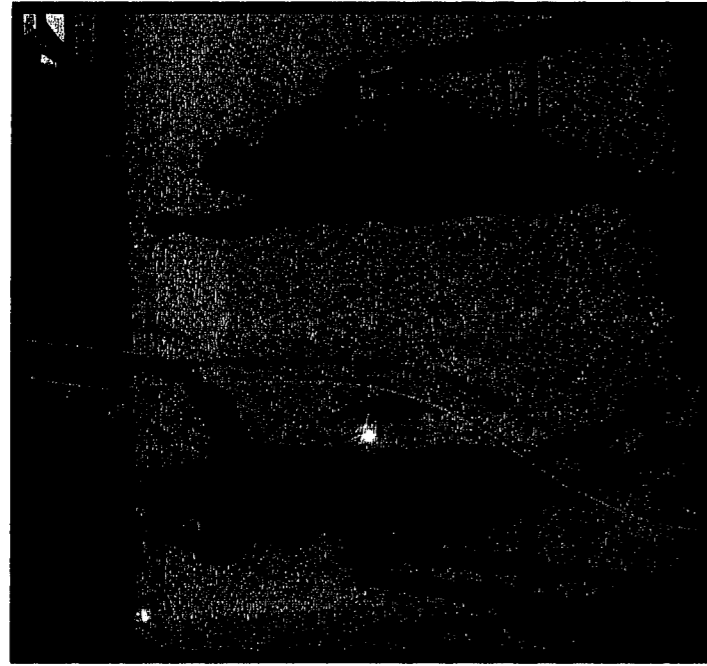
S	M	T	W	T	F	S																																																	
<table border="0" style="width: 100%; text-align: center;"> <tr> <td colspan="2">FEBRUARY</td> <td colspan="2">APRIL</td> <td colspan="2">MARCH</td> <td></td> </tr> <tr> <td>S</td><td>M</td><td>T</td><td>W</td><td>T</td><td>F</td><td>S</td> </tr> <tr> <td>1</td><td>2</td><td>3</td><td>4</td><td>5</td><td>6</td><td>7</td> </tr> <tr> <td>8</td><td>9</td><td>10</td><td>11</td><td>12</td><td>13</td><td>14</td> </tr> <tr> <td>15</td><td>16</td><td>17</td><td>18</td><td>19</td><td>20</td><td>21</td> </tr> <tr> <td>22</td><td>23</td><td>24</td><td>25</td><td>26</td><td>27</td><td>28</td> </tr> <tr> <td>29</td><td>30</td><td>31</td><td></td><td></td><td></td><td></td> </tr> </table>							FEBRUARY		APRIL		MARCH			S	M	T	W	T	F	S	1	2	3	4	5	6	7	8	9	10	11	12	13	14	15	16	17	18	19	20	21	22	23	24	25	26	27	28	29	30	31				
FEBRUARY		APRIL		MARCH																																																			
S	M	T	W	T	F	S																																																	
1	2	3	4	5	6	7																																																	
8	9	10	11	12	13	14																																																	
15	16	17	18	19	20	21																																																	
22	23	24	25	26	27	28																																																	
29	30	31																																																					
5	6	7	8	9	10	11																																																	
	Recreation Commission Zoning Board of Appeals Economic Development Commission Orthodox Lent Begins	Planning & Zoning Human Relations Commission	Youth & Family Services Commission Community Beautification Committee Water Pollution Control Authority	Conservation Commission																																																			
12	13	14	15	16	17	18																																																	
	Fine Arts Commission Board of Education	Historic District Commission Town Council	Local Emergency Planning Committee Housing Authority	Fire Commission																																																			
19	20	21	22	23	24	25																																																	
	Welles-Turner Library Board Commission on Aging	Board of Finance Planning & Zoning	Final Budget Hearing G.H.S. 7:30 Fair Rent Commission Water Pollution Control Authority		St. Patrick's Day																																																		
26	27	28	29	30	31																																																		
	Safety Committee	Town Council		Conservation Commission		E. Glastonbury Library Book/Bake Sale 9-2																																																	
						1995																																																	

Call Town Clerk's Office at 652-7616 to verify meeting dates, times, and locations.

FACILITIES MAINTENANCE

The Building Maintenance Division is focused on providing municipal buildings comprehensive facility services. In addition to preventative maintenance, energy management and project management, the Division provides custodial support and coordination with vendors throughout the municipality. The Division also manages the utility and communication accounts for all facilities except the Board of Education, and provides staff support to the Public Buildings Commission.

- Air ducts were thoroughly cleaned in Town Hall and the Police Facility to improve indoor air quality and comfort of building occupants.
- An evaluation of the Town's telephone system was completed. Customer service improvements and identified efficiencies include the conversion to direct inward dial, the installation of voice mail, and the development of a customer service center in Town Hall. A phased installation is expected to be complete in the Spring '95.
- A new public address system was purchased and installed in the Council Chambers in Town Hall.
- Staff support and project management were provided for both the installation of an elevator in the Gideon Welles Jr. High and the planned renovation of five elementary schools.
- Contractual custodial services were procured for the new Ambulance Building located behind the Police Facility on Main Street.
- Coordinated renovations to the attic and staff room at the Welles-Turner Library.
- Completed a self-assessment and building evaluation for compliance with the provisions of the Americans with Disabilities Act.



Scheduled for spring 1995 opening, the Town Hall Customer Service Center will provide one-stop shopping for Glastonbury residents. Facility Maintenance staff members Robert Kalberer and Gary Plank are shown above during early stages of construction.

A P R I L

S	M	T	W	T	F	S
1995						
				M A R C H		M A Y
				S M T W T F S 1 2 3 4 5 6 7 8 9 10 11 12 13 14 15 16 17 18 19 20 21 22 23 24 25 26 27 28 29 30 31		S M T W T F S 1 2 3 4 5 6 7 8 9 10 11 12 13 14 15 16 17 18 19 20 21 22 23 24 25 26 27 28 29 30 31
2	3	4	5	6	7	8
Daylight Savings Begins	Zoning Board of Appeals Economic Development Commission	Recreation Commission	Public Buildings Commission	Planning & Zoning		
9	10	11	12	13	14	15
Palm Sunday	Fine Arts Commission Board of Education Welles-Turner Read-A-Thon	Town Council	Water Pollution Control Authority Youth & Family Services Commission Community Beautification Committee	Fire Commission Insurance Advisory Committee	Municipal Offices Closed Good Friday	Fishing season opens Passover
16	17	18	19	20	21	22
	Commission on Aging Welles-Turner Library Board Welles-Turner Children's Mystery Program	Board of Finance Planning & Zoning School Vacation	Housing Authority School Vacation	School Vacation	School Vacation	Kids Fishing Derby J.B. Williams Park 8-10 am
23	24	25	26	27	28	29
Welles-Turner Albert Kim Piano Concert	Safety Committee	Town Council	Water Pollution Control Authority Fair Rent Commission Secretaries Duty	Conservation Commission		
30						

- April 5 Daylight savings hours begin at Transfer Station/Recycling Facility
Wednesdays open 7 am - 7 pm.
- April 9-15 National Library Week
- April 18 "Color Outside the Lines" Children's Performance GHS 11 am
- April 23-29 Welles-Turner Week of the Young Child preschool art exhibit

Call Town Clerk's Office at 652-7616 to verify meeting dates, times, and locations.

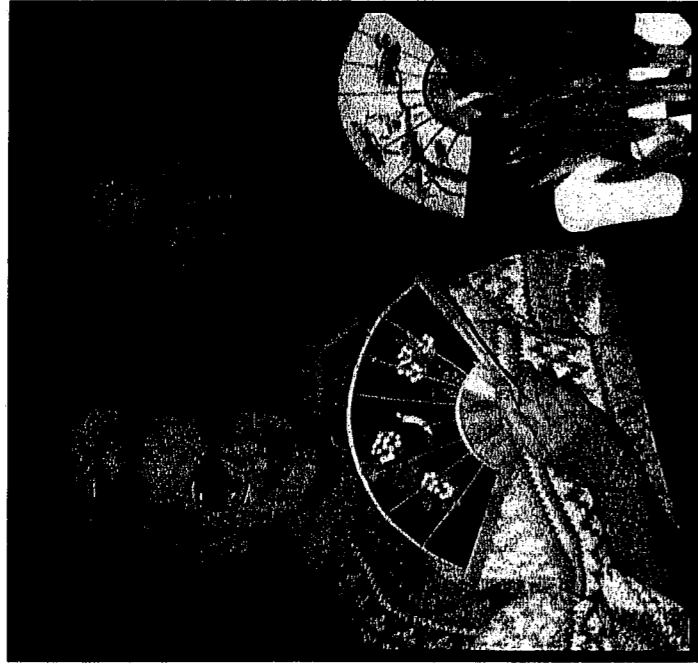
SENIOR SERVICES

The Senior Services Department operates as a community focal point for the coordination of multi-purpose services and programs for Glastonbury citizens age sixty years and over, to promote independence, personal enrichment and an enhanced quality of life. During the fiscal year 1993-94 the Senior Services Department, in cooperation with the Commission on Aging, conducted a Town Wide Senior Needs Survey to assist with future Department planning. The elderly outreach program was expanded to increase the amount of services available to homebound elderly.

SOCIAL SERVICES

The Social Service Department's major responsibility is the administration of entitlement programs. Programs administered by the department include: General Assistance, Energy Assistance, Renter's Rebate (Circuit Breaker), Surplus Commodities, Food Bank, Fuel Bank, Holiday Programs, Operation Fuel and Evictions/Ejectments. During fiscal year 1993/94, the department transferred the Before School Breakfast Program to the Board of Education, for a cost savings of \$9,000/year, as 100% federal funding was available if the program was held in a school.

- 309 Energy Assistance applications processed, \$103,757 awarded.
- 208 Renter's Rebate applications processed, \$70,000 awarded.
- 66 households assisted through the Fuel Bank, totalling \$5,500; 77 households through Food Bank.
- 142 households participated in the holiday programs.
- 21 households were assisted through Operation Fuel, totalling \$3,300.



Seniors enjoying the annual Senior Center Chinese New Year celebration.

MAY

S	M	T	W	T	F	S
1995	1	2	3	4	5	6
	Economic Development Commission Zoning Board of Appeals Recreation Commission	Planning & Zoning	Public Buildings Commission			
7	8	9	10	11	12	13
	Board of Education Fine Arts Commission	Town Council	Water Pollution Control Authority Community Beautification Committee Youth & Family Services Commission	Fire Commission Conservation Commission		Welles-Turner Friends Spring Bus Trip
14	15	16	17	18	19	20
	Welles-Turner Library Board Commission on Aging	Board of Finance Planning & Zoning	Local Emergency Planning Committee Housing Authority			Welles-Turner Friends Book Sale Armed Forces Day
21	22	23	24	25	26	27
Mother's Day	Safety Committee	Welles-Turner Annual Friends Meeting Town Council	Water Pollution Control Authority Fair Rent Commission	Conservation Commission		
28	29	30	31	APRIL		JUNE
	Municipal Offices Closed Memorial Day Parade 9am Memorial Day Observed	Memorial Day Traditional		S M T W T F S 2 3 4 5 6 7 8 9 10 11 12 13 14 15 16 17 18 19 20 21 22 23 24 25 26 27 28 29 30		S M T W T F S 4 5 6 7 8 9 10 11 12 13 14 15 16 17 18 19 20 21 22 23 24 25 26 27 28 29 30

May 7-13 National Police Week
Safety Village: Nursery schools and kindergarten youngsters are invited to attend the Safety Village, set up at the Police Range, for a mini-course in bus and bicycle safety, and rules of the road.

Call Town Clerk's Office at 652-7616 to verify meeting dates, times, and locations.

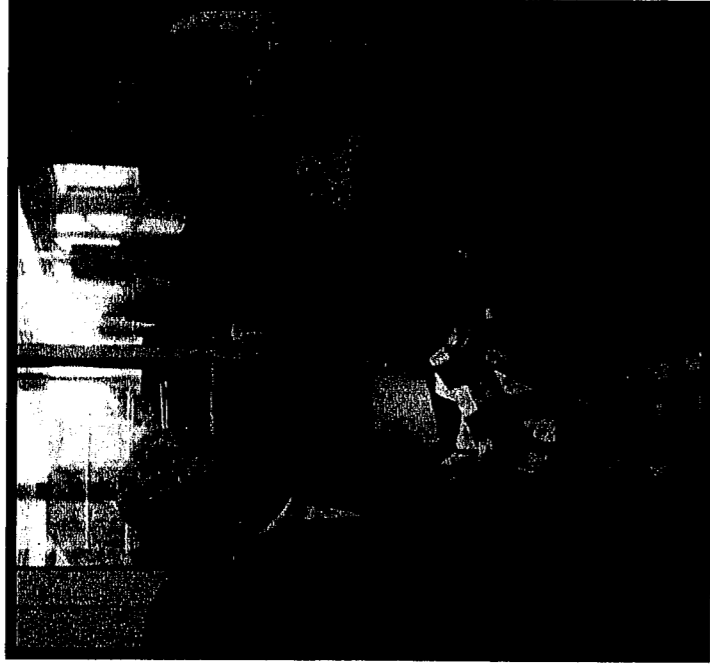
WELLES-TURNER MEMORIAL LIBRARY

The Welles-Turner Memorial Library is responsible for developing and implementing a full range of public library services to meet the information needs and reading interests of the citizens of Glastonbury. Services offered include book and media collections, professional reference assistance, inter-library loans, children's story hours, and other special programs. Automated information services available at the library provide Glastonbury residents access to the developing information highway.

Major accomplishments for 1993-1994 include further development of the library's CONNECT computer system. Additional terminals for public use were added on all floors and a special version of the program called "KidsCat" was installed in the children's department. The library's parking lot was resurfaced and lines redrawn to allow for some additional spaces. Also of note, was implementation of a new volunteer program. Developed with the assistance of the Friends of the Library, volunteer opportunities include book mending, shelf-reading, and book delivery to the home-bound.

SOUTH GLASTONBURY PUBLIC LIBRARY

- Provides local resources for the education and recreation of the community including books, periodicals, recordings supplemental to whatever additional services, facilities or exhibitions may be of interest and need to this community.
- Encourages and supports the development and appreciation of the literary and artistic heritage of this Country which include the selection and purchase of books, recordings, periodicals and other related materials to help the community achieve a deep enjoyment of life, a broader understanding of themselves and the problems of the world.



Volunteers read to children during the Annual Read-A-Thon at the Welles-Turner Memorial Library.

JUNE

S	M	T	W	T	F	S																																																	
<table border="0"> <tr> <td colspan="2">MAY</td> <td colspan="3">JULY</td> <td colspan="2"></td> </tr> <tr> <td>S</td><td>M</td><td>T</td><td>W</td><td>T</td><td>F</td><td>S</td> </tr> <tr> <td>1</td><td>2</td><td>3</td><td>4</td><td>5</td><td>6</td><td>7</td> </tr> <tr> <td>8</td><td>9</td><td>10</td><td>11</td><td>12</td><td>13</td><td>14</td> </tr> <tr> <td>15</td><td>16</td><td>17</td><td>18</td><td>19</td><td>20</td><td>21</td> </tr> <tr> <td>22</td><td>23</td><td>24</td><td>25</td><td>26</td><td>27</td><td>28</td> </tr> <tr> <td>29</td><td>30</td><td>31</td><td></td><td></td><td></td><td></td> </tr> </table>							MAY		JULY					S	M	T	W	T	F	S	1	2	3	4	5	6	7	8	9	10	11	12	13	14	15	16	17	18	19	20	21	22	23	24	25	26	27	28	29	30	31				
MAY		JULY																																																					
S	M	T	W	T	F	S																																																	
1	2	3	4	5	6	7																																																	
8	9	10	11	12	13	14																																																	
15	16	17	18	19	20	21																																																	
22	23	24	25	26	27	28																																																	
29	30	31																																																					
4	5	6	7	8	9	10																																																	
				Dog licenses available		Mary Poppins Gideon Welles 7:30 pm																																																	
11	12	13	14	15	16	17																																																	
	Zoning Board of Appeals Recreation Commission Economic Development Commission	Human Relations Commission Planning & Zoning	Public Buildings Commission	Fire Commission																																																			
	Board of Education Fine Arts Commission	Historic District Commission Town Council	Community Beautification Committee Youth & Family Services Commission Water Pollution Control	Conservation Commission																																																			
18	19	20	21	22	23	24																																																	
	Commission on Aging Welles-Turner Library Board	Planning & Zoning Board of Finance	Housing Authority			Town Pools Open																																																	
25	26	27	28	29	30	31																																																	
	Feather's Day Tax Bills Mailed Safety Committee	Fun Run GHS 6:30 pm Town Council	Water Pollution Control Authority Fair Rent Commission	Conservation Commission																																																			
						1995																																																	

June 15 - August 31 E. Glastonbury Library Summer Readers Program
 Welles-Turner Library Summer Reading Program
 Bicycle Rodeo: Police Department's Traffic & Youth Units conduct bicycle registration & safety checks throughout the Town.

Call Town Clerk's Office at 652-7616 to verify meeting dates, times, and locations.

EAST GLASTONBURY PUBLIC LIBRARY

The East Glastonbury Public Library is operated entirely on a voluntary basis, serving both children and adults. It is open to the public 23 hours per week, and operated by about 36 volunteers who donate 106 hours per week. The operation is overseen by the Library Association Board which consists of five officers and seven Trustees. Library policy and finance are controlled by the Board.

The Library owns approximately 16,500 books and 70 periodicals. The circulation of books and magazines for the fiscal year totalled 14,000.

The Library provides an adult book-study group, children's story hour for ages three to five, and a summer readers' program for children of all ages. These are provided free to the residents of Glastonbury.

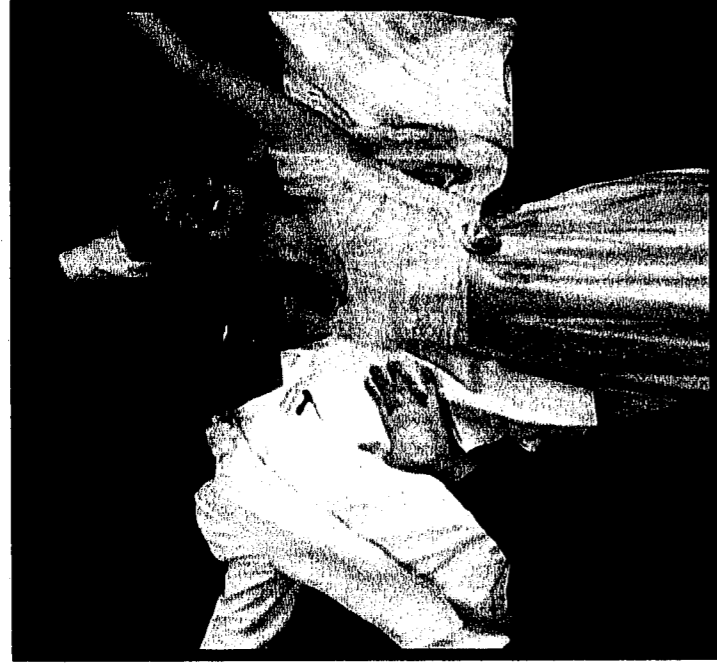
YOUTH AND FAMILY SERVICES

Youth and Family Services is dedicated to providing quality services to children, youth and families to promote positive development, exceed customer expectations, and empower the families we serve.

In the 1993-94 fiscal year, Clinical Services counseled 330 individuals and 210 families; conducted 13 therapy and support groups; and presented 19 programs and presentations to the Glastonbury community.

Creative Experiences served 1309 young people while working with the "Babes in Arms" summer musical; the "Fantastics" fall production; "Wizard of Oz" spring traveling troupe; Pass It On weekly television show; Youth Services Action Group (YSAG); and many more activities serving Glastonbury residents.

Outreach Services worked closely with the school system sponsoring a Peer Education program with 44 peer education counselors. Outreach Services, Glastonbury Housing Authority, and the Glastonbury Police Department co-sponsored the Welles Village Activity Council for Youth (WACY) which served 75 young people during the summer. They also provided activities to the WACY Leadership Council, 15 youths, during the school year. Outreach serviced 581 youths in Glastonbury.



Linda Yrooman and Chris Comerford lead the cast of "Babes in Arms" in the closing number.

JULY

	S	M	T	W	T	F	S	I
1995								
	2	3	4	5	6	7	8	
Town Band Concert Hubbard Green 7 pm								Tax payments due Canada Day
	9	10	11	12	13	14	15	
		Kids Dog Show Hubbard Green 6 pm Economic Development Commission Recreation Commission	Municipal Offices Closed Independence Day	Summer Music Series Hubbard Green 7 pm Community Beautification Committee Water Pollution Control Authority	Fire Commission Insurance Advisory Committee			
Town Band Concert Hubbard Green 7 pm			Fun Run GHS 6:30 pm Town Council					
	16	17	18	19	20	21	22	
			Fun Run GHS 6:30 pm Planning & Zoning Board of Finance	Summer Music Series Hubbard Green 7 pm Local Emergency Planning Committee Housing Authority				
Town Band Concert Hubbard Green 7 pm								
	23	24	25	26	27	28	29	
		Welles-Turner Library Board Board of Education	Fun Run GHS 6:30 pm Town Council	Summer Music Series Hubbard Green 7 pm Fair Rent Commission Water Pollution Control Authority	Conservation Commission			
Town Band Concert Hubbard Green 7 pm								
	30	31						
		Waste Disposal Permits Expire Town Council						

Welles-Turner Library Summer Reading Program
Special Olympics/Hoising Irish Team

Call Town Clerk's Office at 652-7616 to verify
meeting dates, times, and locations.



Educational Facilities

- 1. Glastonbury High School
- 2. Gideon Welles Junior High School
- 3. Academy School
- 4. Naubuc Elementary School
- 5. Hebron Avenue Elementary School
- 6. Buttonball Elementary School
- 7. Hopewell Elementary School
- 8. Eastbury Elementary School
- 9. Board of Education
- 10. Welles-Turner Public Library
- 11. East Glastonbury Public Library
- 12. South Glastonbury Public Library

Fire Stations

- 13. Company 1
- 14. Company 2
- 15. Company 3
- 16. Company 4

Recreational Facilities

- 17. Academy Field
- 18. Addison Park
- 19. Buckingham Park
- 20. Butler Field
- 21. Center Green
- 22. Cotton Hollow Preserve
- 23. Audubon Society and Earle Park
- 24. Eastbury Pond
- 25. Glastonbury Memorial Park
- 26. Grange Pool
- 27. High Street School Park
- 28. Rotary Field
- 29. Salmon Brook Park
- 30. Welles Park
- 31. J.B. Williams Park
- 32. Blackledge Falls
- 33. Glastonbury/Rock Hill Ferry

Municipal Facilities

- 34. Town Office Building
- 35. Police Station
- 36. Senior Citizen's Center
- 37. Parks and Recreation Department
- 38. Ambulance Building
- 39. Building Maintenance/ Water Pollution
- 40. Youth and Family Services
- 41. Highway and Vehicle

Maintenance Departments/ Town Garage

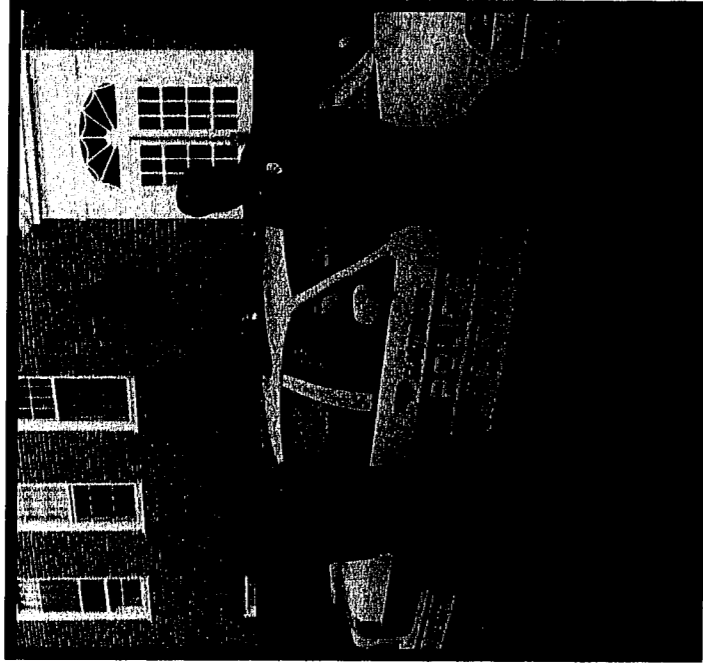
- 42. Transfer Station
- 43. Bulky Waste Facility
- 44. Hubbard Green

POLICE DEPARTMENT

MISSION STATEMENT "All members of the Glastonbury Police Department are committed to providing quality service in a professional and sensitive manner to everyone in our community."

We encourage open dialogue and positive interaction to form a partnership which will enhance the quality of life for all." This Mission Statement has been developed to provide residents and businesses quality law enforcement services in the following areas:

- Protection of life and property.
- Prevention of crime.
- Preservation of peace.
- Recovery of property.
- Regulation of noncriminal conduct.
- Apprehension of offenders.
- The performance of miscellaneous services, such as primary medical assistance, assisting motorists, unlocking cars, etc.
- Expanded Community Policing Project in residential and central business district using foot and bicycle patrols in an attempt to prevent crimes.
- Increased traffic enforcement to reduce serious motor vehicle accidents. No fatal accidents occurred during this fiscal year and there was a decrease in serious injury accidents.
- Increased grant participation in both Youth and Crime Prevention with particular emphasis on the Drug Awareness Resistance Education (DARE) Program.
- Completed an in-depth study showing the need for a public safety computer system to improve coordinated responses for police, fire and medical services to all customers.
- Completed construction of emergency communications tower on Birch Mountain Road.



Officers Joel White and Roman Karp are shown with the newly designed police cruiser to enhance the visibility of patrol vehicles in the community.

AUGUST

S	M	T	W	T	F	S
1995		1	2	3	4	5
6	7	8	9	10	11	12
	Zoning Board of Appeals	Fun Run GHS 6:30 pm	Public Buildings Commission			
13	14	15	16	17	18	19
		Fun Run GHS 6:30 pm Town Council	Water Pollution Control Authority Community Beautification Committee	Sr. Citizen Picnic Hubbard Green 9:30-3 Fire Commission		
20	21	22	23	24	25	26
		Fun Run GHS 6:30 pm Board of Finance Planning & Zoning	Housing Authority			
27	28	29	30	31		
	Board of Education	Town Council	Water Pollution Control Authority Fair Rent Commission	Conservation Commission		

August 10, 11, 12 The King & I - GHS 7:30 pm
Summer Reading Program

Call Town Clerk's Office at 652-7616 to verify meeting dates, times, and locations.

CIVIL PREPAREDNESS

The Office of Civil Preparedness is responsible for coordinating all governmental and private sector activities in times of man-made or natural disasters. In order to meet these obligations effectively, the office is very active in planning for manpower, equipment and community needs. This involves continual updating of information, regulations and equipment.

The department conducts constant checks of materials and equipment, including the town warning sirens. It trains and recertifies radiological monitors with emphasis on peacetime accidents involving hazardous materials.

In disaster situations, the office updates information and instructions to the citizens via its disaster information telephone number (652-7578). A state-of-the-art mobile telecommunications van is equipped to function as back-up should the Town's main system fail.

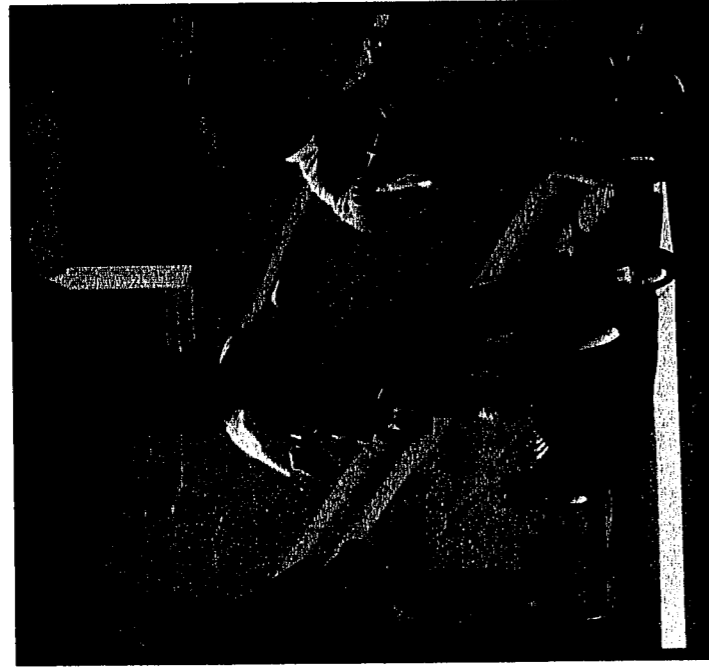
In 1994, the Civil Preparedness staff, operating with its telecommunications van, participated in a mock hazmat spill of major proportions. This drill exercised both equipment and procedures.

FIRE COMMISSION/FIRE DEPARTMENT

The Board of Fire Commissioners is responsible for providing, maintaining, and regulating a fire department. The Board is bipartisan, and consists of six members elected for six years on a rotating basis.

The objective of the Board of Fire Commissioners is to provide adequate fire and rescue protection for the town; organize, staff and train an effective fire department; plan and recommend the acquisition of apparatus, equipment, and facilities; and provide appropriate assistance in emergencies and disasters.

[continued]



Children participating in Safety Village Program sponsored by the Glastonbury Police Department in which they learn basic road safety rules prior to school enrollment.

S E P T E M B E R

S	M	T	W	T	F	S
1995						
3	4	5	6	7	8	9
10	11	12	13	14	15	16
17	18	19	20	21	22	23
24	25	26	27	28	29	30

AUGUST		OCTOBER				
S	M	T	W	T	F	S
1	2	3	4	5	6	7
8	9	10	11	12	13	14
15	16	17	18	19	20	21
22	23	24	25	26	27	28
29	30	31				

DATE	EVENTS
3	Town Outdoor Pools Close for Season Municipal Offices Closed Leather Day
4	
5	Planning & Zoning Human Relations Commission
6	Public Buildings Commission Grades 9-12 First Day of School
7	
8	
9	
10	Zoning Board of Appeals Economic Development Commission Board of Education Fire Arts Commission Recreation Commission
11	
12	Historic District Commission Town Council
13	Youth & Family Services Commission Water Pollution Control Authority Community Beautification Committee
14	Grades K-8 First Day of School
15	Fire Commission Conservation Commission
16	
17	Commission on Aging Welles-Turner Library Board
18	
19	Planning & Zoning Board of Finance
20	
21	Housing Authority Local Emergency Planning Committee
22	
23	
24	Safety Committee Booth Husbands
25	
26	Town Council
27	Fair Rent Commission Water Pollution Control Authority
28	Conservation Commission
29	
30	Welles-Turner Library Quilt Show

Book Sale - Welles-Turner Library
D.A.R.E. and Officer Friendly Programs begin for the school year.
Sept. 20 Daylight Savings Hours at Transfer Station/Recycling Facility modified to 7 am - 6 pm.

Call Town Clerk's Office at 652-7616 to verify meeting dates, times, and locations.

FIRE COMMISSION/FIRE DEPARTMENT (cont.)

Communications

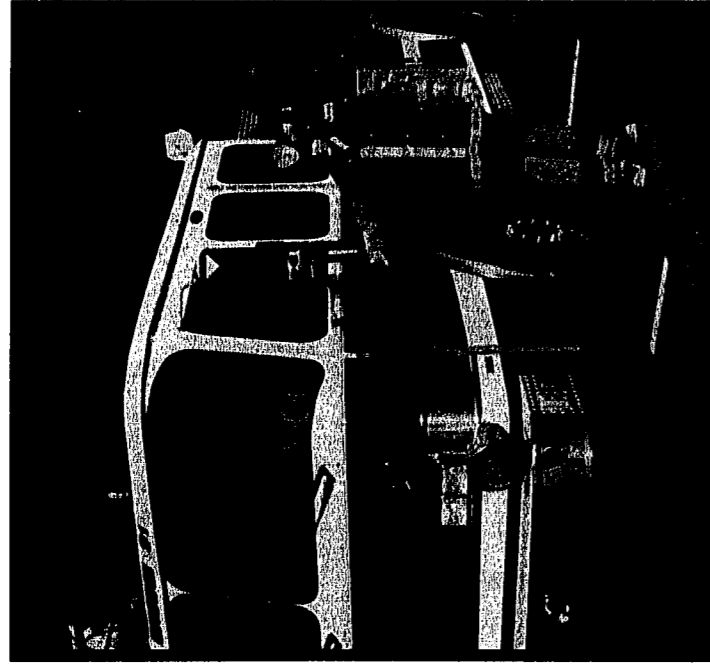
The Fire Department is near completion of its new UHF radio system. This system will enhance portable and mobile communications throughout Glastonbury. It will also provide a separate operating channel to be used at the scene of emergency incidents.

New Apparatus

The Fire Department has taken delivery of two new pieces of fire apparatus. The first will be housed at Company #3 on Chestnut Hill Road and the second will be housed at Company #2 in South Glastonbury. Both trucks are unique to Glastonbury as they are essentially "recycled" older trucks which have been in service. The "Glider-Kit" concept will result in significant cost savings over an entirely new piece of apparatus. The truck for Company #2 will have a 50' telesquirt attached by SNORKEL. Both trucks will return to the original color of fire apparatus... red and white.

Explorer Cadet Program

An explorer cadet program has been developed in the Glastonbury Fire Department. The purpose of this organization is to assist in the protection of life and property from fire, to eliminate or correct causes of fire, to assist in times of emergency or disaster, and to promote good will and friendship. Active membership in this organization is open to any person residing in Glastonbury who has attained the age of 14 years, but not yet reached 21 years of age.



Lieutenant Bernard Drenler, Jr. with the Glastonbury Volunteer Fire Department's newest fire truck housed at Company 3.

OCTOBER

S	M	T	W	T	F	S
1	2	3	4	5	6	7
	Zoning Board of Appeals Economic Development Commission Recreation Commission	Planning & Zoning	Public Buildings Commission Yvonne McQuinn	Fire Commission Conservation Commission Insurance Advisory Committee Columbus Day Traditional		21st Annual Apple Harvest Festival
8	9	10	11	12	13	14
	Municipal Offices Closed Columbus Day Observed	Town Council	Community Reunification Committee Youth & Family Services Commission Water Pollution Control Authority			
15	16	17	18	19	20	21
21st Annual Apple Harvest Festival	Welles-Turner Library Board Commission on Aging Fine Arts Commission Board of Education	Planning & Zoning Board of Finance	Kids Decorated Pumpkin Contest - Jr. High 6:30 pm Housing Authority			
22	23	24	25	26	27	28
	Safety Committee	Town Council	Fair Rent Commission Daylight Savings Hours at Transfer Station end Water Pollution Control Authority	Conservation Commission		Welles-Turner Anniversary Day Reception Hunting season opens
29	30	31				
Daylight Savings Ends		Halloween				

SEPTEMBER							NOVEMBER						
S	M	T	W	T	F	S	S	M	T	W	T	F	S
	3	4	5	6	7	8	1	2	3	4	5	6	7
	10	11	12	13	14	15	12	13	14	15	16	17	18
	17	18	19	20	21	22	19	20	21	22	23	24	25
	24	25	26	27	28	29	26	27	28	29	30		

1995

Call Town Clerk's Office at 652-7616 to verify meeting dates, times, and locations.

Responsible for management of roadway, sewers, sidewalks, traffic controls, and other aspects of the Town's physical infrastructure system. This pertains to both new projects and additions to the system as well as maintenance and repair of the existing infrastructure.

ENGINEERING DIVISION

During the past year, this Division improved its ability to produce high quality, accurate mapping and plans for a variety of Town Departments and the general public through expanded use of the Computer Aided Design (CAD) System. The CAD System has allowed higher quality plans to be produced while increasing efficiency necessitated by a decrease in the work force.

HIGHWAY DIVISION

During the past year, the Highway Division undertook an aggressive pavement maintenance and repair program aimed at extending the life of the Town's roads. Through various pavement overlay types, the Highway Division managed to resurface over 13 miles of road. This, combined with another paving program in the current year, will preserve this portion of the roadway system and allow the public greater convenience and safety.

VEHICLE MAINTENANCE DIVISION

This Division is responsible for the maintenance, repair, and replacement of all vehicles within the Town's fleet. Increased usage of a computerized fleet analysis system that tracks vehicle expense data has improved planning ability with regard to preventative maintenance, major repairs, and vehicle replacements.



Highway Division employees Don O'Gara and Steve Devonney operating the VACCON, a sewer and catch basin cleaning machine.

N O V E M B E R

S	M	T	W	T	F	S																																																	
<table border="0" style="width: 100%; text-align: center;"> <tr> <td colspan="2">OCTOBER</td> <td colspan="2">DECEMBER</td> <td colspan="2">NOVEMBER</td> <td></td> </tr> <tr> <td>S</td><td>M</td><td>T</td><td>W</td><td>T</td><td>F</td><td>S</td> </tr> <tr> <td>1</td><td>2</td><td>3</td><td>4</td><td>5</td><td>6</td><td>7</td> </tr> <tr> <td>8</td><td>9</td><td>10</td><td>11</td><td>12</td><td>13</td><td>14</td> </tr> <tr> <td>15</td><td>16</td><td>17</td><td>18</td><td>19</td><td>20</td><td>21</td> </tr> <tr> <td>22</td><td>23</td><td>24</td><td>25</td><td>26</td><td>27</td><td>28</td> </tr> <tr> <td>29</td><td>30</td><td>31</td><td></td><td></td><td></td><td></td> </tr> </table>							OCTOBER		DECEMBER		NOVEMBER			S	M	T	W	T	F	S	1	2	3	4	5	6	7	8	9	10	11	12	13	14	15	16	17	18	19	20	21	22	23	24	25	26	27	28	29	30	31				
OCTOBER		DECEMBER		NOVEMBER																																																			
S	M	T	W	T	F	S																																																	
1	2	3	4	5	6	7																																																	
8	9	10	11	12	13	14																																																	
15	16	17	18	19	20	21																																																	
22	23	24	25	26	27	28																																																	
29	30	31																																																					
5	6	7	8	9	10	11																																																	
	Economic Development Commission Recreation Commission Zoning Board of Appeals	Election Day	Youth & Family Services Commission Community Beautification Committee Water Pollution Control Authority	Fire Commission	Municipal Offices Closed Veterans Day Observed	Veterans Day																																																	
12	13	14	15	16	17	18																																																	
	Board of Education Fine Arts Commission	Town Council	Local Emergency Planning Committee Housing Authority	Conservation Commission																																																			
19	20	21	22	23	24	25																																																	
	Commission on Aging Welles-Lunar Library Board	Planning & Zoning Board of Finance	Water Pollution Control Authority Four Rent Commission	Municipal Offices Closed Thanksgiving	Municipal Offices Closed																																																		
26	27	28	29	30		1995																																																	
	Safety Committee	Town Council																																																					

Call Town Clerk's Office at 652-7616 to verify meeting dates, times, and locations.

WATER POLLUTION CONTROL DIVISION

The Water Pollution Control Division is responsible for the operation and maintenance of the Water Pollution Control Facility (WPCF), 8 pumping stations and collection systems in compliance with State and Federal permit requirements.

Our Facility must operate continuously 24 hours a day, 365 days per year.

- Installed a sludge thickening system to reduce sludge hauled by 1 million gallons per year.
- Contracted with engineering consultant to develop sewer system evaluation for next 20 years, including Water Pollution Control Facility, Pumping Stations and Collections system for planning future needs.
- Maintained stable sewer use rate for three consecutive years.

REFUSE DISPOSAL DIVISION

The Refuse Disposal Division is responsible for the operation of the Transfer Station, recycling facility, Bulky Waste facility and 2 Satellite Recycling Drop off locations.

Provides public education in disposing of refuse, recyclables and hazardous waste.

Issues commercial waste and recycling collector permits and enforces local and Federal ordinances and statutes.

- Obtained State Department of Environmental Protection recycling grant funding through the Capitol Region Council of Governments (CRCOG) for recycling capital equipment and public education.
- Initiated waste antifreeze recycling collection program at the Transfer Station.
- Participated in Capitol Region East Operating Committee (CREOC) review of potential Regional Household Hazardous waste collection program.
- Cost for Refuse Disposal at transfer Station \$145,656.00.



Another successful Household Hazardous Waste Day. 150 drums of various household hazardous waste were collected from 700 households.

DECEMBER

S	M	T	W	T	F	S
1995						
3	4	5	6	7	8	9
10	11	12	13	14	15	16
Santa's 3.5 mile Run GHS noon (dependent weather date)						
17	18	19	20	21	22	23
24	25	26	27	28	29	30
31						

NOVEMBER		DECEMBER		JANUARY		
S	M	T	W	T	F	S
5	6	7	8	9	10	11
12	13	14	15	16	17	18
19	20	21	22	23	24	25
26	27	28	29	30		

Event	Date
Economic Development Commission	4
Recreation Commission	4
Board of Education	4
Zoning Board of Appeals	4
Planning & Zoning	5
Human Relations Commission	5
Public Buildings Commission	6
Town Council	11
Historic District Commission	11
Youth & Family Services Commission	11
Fire Arts Commission	18
Commission on Aging	18
Wallis-Turner Library Board	18
Safety Committee	18
Christmas	18
Board of Finance	26
Planning & Zoning	26
Housing Authority	27
Community Beautification Committee	20
Water Pollution Control Authority	20
Fire Commission	21
Conservation Commission	21
School Vacation	28
School Vacation	29
School Vacation	30
School Vacation	31

Call Town Clerk's Office at 652-7616 to verify meeting dates, times, and locations.

ACCOUNTING DIVISION

The Accounting Division is responsible for providing complete and accurate financial information in proper form and on a timely basis. This division issues all disbursement checks, administers the accounts receivable billing system, prepares the year end comprehensive annual financial report and processes the employee payroll. Monthly budgetary and other financial reports are forwarded to management and policy boards. The division is also responsible for investment management procedures to maximize interest income on all funds and internal audit functions to insure that proper controls and procedures are being followed.

The Town received the Certificate of Excellence in Financial Reporting for the period ended June 30, 1993, awarded by the Government Finance Officers Association following an extensive review process.

REVENUE COLLECTION DIVISION

The Collector of Revenue's office is responsible for the timely collection of funds necessary to support both governmental and educational services. Those funds account for approximately 85% to 87% of the annual Town budget. Taxes and fees for the fiscal year 1993-1994 totalled \$51,018,485 and sewer charges and fees totalled \$1,530,884.

During the fiscal year, the tax office accomplished the following:

- Pursued contract for an outside collection agency.
- Automated reporting of delinquent motor vehicle taxpayers to the Motor Vehicle Department.
- Automated tape to tape tax payments with several bank service bureaus.
- Collected over \$790,000 in back taxes.

FINANCIAL ADMINISTRATION

Installed a new central computer system as a result of significant damages from a burst water pipe to the existing computer system. During this challenging period, staff, software vendors and other communities assisted the Town in maintaining continuous service as well as installing the new system.

Two Bond Anticipation Note sales were held to fund the redesign and construction of the elementary schools and the Addison Park Pool.

PROPERTY ASSESSMENT DIVISION

The Property Assessment Division administers an ad-valorem tax program in compliance with State Statutes. It compiles the annual Grand List of taxable and exempt property including the valuation and revaluation of real estate, motor vehicles and business personal property, as well as the maintenance and updating of various related information.

- Commenced the decennial revaluation of all real estate for completion on the October 1, 1995 Grand List.
- Initiated a Personal Property audit program with first year expenditures of \$9600 and an estimated potential additional tax of \$60,000.

REGISTRARS OF VOTERS

Registrars recorded 575 new voters between July 1, 1993 and June 30, 1994.

The November 2, 1993 Town Election drew 49% (9,088) of the 18,415 eligible voters. The referendum question on that ballot, an \$800,000 bond issue for design and construction of a swimming pool in Addison Park, passed (yes: 3,957 no: 3,152).

Voters can register during regular business hours in the Registrars' or Town Clerk's office in Town Hall. Mail-in registration cards are available at the Department of Motor Vehicles, Libraries, public assistance agencies and in the Town Hall.

TOWN CLERK

The Town Clerk's office is the center for public records and information including land records, vital statistics, elections, military discharges, notaries public, liquor permits, minutes of the numerous boards and commissions, and various licenses. The office also answers the numerous and varied questions which individuals have concerning the town.

The Town Clerk's office, which is mostly governed by state statute, is also a major collector of revenue for the State of Connecticut as well as for the town. Income for the 1993-94 fiscal year increased 8% over the previous year. Recording fees reached the highest level ever for the second straight year reflecting increased land record activity.

A records management report was compiled and a records management committee was formed to devise new methods for the handling of records, review new technology, assess on-going procedures, and serve as a records management advisor to all divisions. The committee will continue on an ongoing basis.

BOARD OF TAX REVIEW

The Board of Tax Review consists of five elected members. The Board hears taxpayer appeals of property valuations set by the Assessor.

BOARD OF FINANCE

The bipartisan Board of Finance is composed of six members elected to a six year term, with two positions open biannually. The Board operates in partnership with the Town Council and the Board of Education.

The Town Charter specifies the duties and powers of the Board of Finance. In its advisory role, the Board recommends an annual budget to the Town Council. Additionally, the Board recommends and/or authorizes transfers among and between accounts and funds during the fiscal year.

By direct authority the Board establishes the annual mill rate of taxation after reviewing the final budget that has been approved by the Town Council.

The Board reviews and establishes the policy and objectives for the Town's pension asset management. In addition, it establishes the quality criteria for institutions which hold Town deposits.

The Capital Improvement Program is strongly supported by the Board and, historically, it has been committed to consistent annual budget dedication to the long range stability of the CIP.

Only a few towns in Connecticut have a Town Council/Town Manager and a Board of Finance. History has shown that such a structure provides a solid system of financial management, which is the envy of many towns in the state.

BUILDING BOARD OF APPEALS

This Board is charged with the responsibility of hearing appeals pertaining to building construction and interpretation of Town Codes when the Building Official rejects or refuses to approve the mode or manner of construction; or when it is claimed that the provisions of the Code do not apply, have been misconstrued or have been wrongly interpreted.

No appeals were heard during this period.

COMMISSION ON AGING

The Commission on Aging's mission is to provide a source of support for the Senior Services Department in the implementation of programs for the elderly citizens of Glastonbury. During the 1993-94 fiscal year, the Commission's major efforts have been in support of the Senior Center project. The Commission presented the Senior Needs Report to the Town Council recommending a new Senior Center and participated in the site committee which explored possible locations. The Commission also supported the Senior Services Department in its efforts to provide the best Senior Programs within the Town's means.

COMMUNITY BEAUTIFICATION COMMITTEE

The Committee is an advisory group that provides expert advice on enhancements to Town facilities as well as the review of landscape plans for commercial/industrial projects and certain residential projects. During the year, the Committee work on the Tercentennial Park came to a conclusion as the park bloomed with many varieties of plants providing an enhanced Town Center.

CONSERVATION COMMISSION

Acting as the Town's Inland Wetlands and Watercourses Agency, the Conservation Commission continues to consider and act on development proposals that could affect designated wetlands and their buffer areas.

- Began preparations for a comprehensive, town-wide conservation plan to guide future natural resource conservation efforts throughout the Town. This work assisted the Town Plan and Zoning Commission with their mandated update of the Plan of Development which will guide development in town through the year 2005.
- Assisted in the rezoning of land in southwestern Glastonbury over very important groundwater resources.
- Reviewed 3 affordable housing proposals with rather complicated natural resource or environmental issues.
- Hosted a multi-town informational program for the United States Army Corps of Engineers concerning their Connecticut River dredging program.

ECONOMIC DEVELOPMENT COMMISSION

The Economic Development Commission is a seven member advisory board charged with the task of encouraging and promoting appropriate economic development activities. During the year, the Commission continued to monitor the economic climate in the community and supported the efforts of the Capitol Region Growth Council and its work on new regional initiatives.

FAIR RENT COMMISSION

The Fair Rent Commission is responsible for adjudicating complaints related to rents, particularly "harsh and unconscionable increases" in rents to tenants. The Commission is the policy making body and serves with no compensation. The Secretary receives all telephone and written complaints, mediates complaints, and makes recommendations to the Commission if a mediation is not possible. The Commission is the final arbiter of fair rent complaints.

Due to the relatively depressed state of the rental market, the Fair Rent Commission has heard few complaints. These have been in the following areas:

- Failure of the landlord to refund security deposits.
- Landlord building and health violations.
- Tenant's legal position on breaking their lease due to financial hardship.
- Landlord harassments due to tenant's violation of the lease.

FINE ARTS COMMISSION

The Fine Arts Commission promotes cultural programs and activities that encourage and expand general interest and participation in the fine arts among Glastonbury residents.

- Sponsored the annual Hartford Pops Concert held on Hubbard Green.

GLASTONBURY HOUSING PARTNERSHIP

The Glastonbury Affordable Housing Partnership was established in 1989 to support Glastonbury's commitment to the capitol region Compact on Fair Housing. Glastonbury's goal is to build 220 units of affordable housing by the year 1999.

GREAT POND PRESERVE STEWARDSHIP COMMITTEE

This Committee was established by the Town Council to oversee the management of the future Great Pond Preserve under an agreement between the Town and The Nature Conservancy (TNC). Its eight members include representatives from the Town Council, Town Administration, Conservation and Recreation Commissions, TNC, and Friends of Great Pond.

In 1993-94 the Committee:

- Approved a trail layout and named a trail in memory of the late Robert Kaye of The Balf Company who was instrumental in saving a beautiful preserve area and securing its donation to the Town. Also held a spring hike for members of the local Subchapter of TNC and friends.
- Erected fencing along a vulnerable preserve boundary with the help of volunteers from the local Subchapter of TNC and Boy Scout Troop 540.
- With TNC and its Great Pond Endowment Fund, initiated a study of the geological and human history of the area by Professor Robert Thorson of UConn. The study should help to provide a scientific basis for management of this sensitive and unusual area.
- Provided improved protection for the Preserve to obtain conservation easements in favor of the Town on restored slopes of Balf's current excavation and to obtain favorable adjustment of a preserve boundary.

HOUSING CODE OF APPEALS COMMITTEE

This committee is charged with the responsibility of hearing appeals by affected persons of any notice from the Director of Health concerning the housing code.

No hearings were heard during this period.

HISTORIC DISTRICT COMMISSION

The Historic District Commission is appointed by the Town Council to protect and enhance the historical features of the Main Street Historic District.

During the year, the Commission reviewed a small number of property improvement projects including minor modifications to residences. The Historic District on Main Street continues to be a valuable community asset that is visited and enjoyed by many people during the changing seasons.

PUBLIC BUILDINGS COMMISSION

The Public Buildings Commission is charged by the Town Council to consider matters pertaining to the acquisition, construction, and/or modification of public buildings. Notable project involvement in fiscal year 1993/94 include:

- Addition to the Vocational Agricultural Center at Glastonbury High School.
- Construction of an elevator at Gideon Welles Junior High School.
- Elementary school renovations and school reroofing.

The Commission began work on the development of a Master Building Plan.

RECREATION COMMISSION

The Recreation Commission is the advisory board to the Town Council on matters relating to recreation and parks. The Commission actively worked on the following projects:

- Renovations and improvements to Butler Field.
- Design of an outdoor swimming pool at Addison Park.
- Acquisition of riverfront property.
- Provided input to the Town Plan and Zoning Commission's update of the Town Plan of Development.

TOWN PLAN AND ZONING COMMISSION

The Town Plan and Zoning Commission is a nine member Commission (6 regular, 3 alternates) appointed by the Council. Regular duties include action on residential subdivisions, commercial/industrial site plans, business signage, earth products excavations, and flood zone management. Advisory responsibilities include recommendations on zone change applications and public improvements.

During the year, the Commission commenced a major special project, the 10 year update to the Town Plan of Development. This Plan is our land use policy guide that will direct development into the next century.

WATER POLLUTION CONTROL AUTHORITY

The Water Pollution Control Authority (WPCA) is responsible for the use and operation of the sanitary sewer system. Its function is to acquire, construct, and oversee operations of facilities relative to the sanitary sewer system. The WPCA establishes rates and procedures to recoup the cost of maintenance, repair, expansion, and operation of the sewer system.

During the 1993/94 fiscal year, the WPCA reviewed and considered the following projects:

- Roaring Brook Master Sewer Plan: The Roaring Brook re-evaluation provides for an up-to-date Master Sewer Plan of the currently unsewered portion of Glastonbury located in the Roaring Brook, Cold Brook, and Blackledge River drainage basins.

- Wastewater Treatment Sewer Inventory/Audit: This project is an evaluation of the entire existing sanitary sewer system and will provide existing flows, condition of interceptor lines, amount of capacity remaining within the interceptor lines, and relief sewers where applicable.

WELLES-TURNER MEMORIAL LIBRARY BOARD

The Library Board is very appreciative of all the numerous townspeople who continue to contribute books, CDs, videos and other items, either as memorial gifts or in areas of particular interest to the donor. The Friends of the Welles-Turner Memorial Library also provided over \$30,000 this past year. This money was used to improve our collection, add to our technology, provide in-service training to staff and to generally enhance both the physical setting and the services provided.

If the individual material donations and the gifts of time and money from the Friends is added to the \$32,000 we received this year from the endowment (Harriet Burnham Trust) you will see that the Welles-Turner Memorial Library has truly been blessed with generous patrons. With regard to the endowment, the trust has provided over one million dollars to the library since it was built in 1952.

This year saw the establishment of the Welles-Turner Memorial Library Second Century Fund which has set a very ambitious goal of raising one million dollars to defray the cost of the much needed library expansion. Volunteers have spent countless hours on this goal, and their efforts are bearing fruit. The Board is

pursuing every avenue to cut costs and encourage fund raising so that the proposal that will go to referendum will represent the best possible plans at the most reasonable cost to the town.

YOUTH AND FAMILY SERVICES COMMISSION

The Glastonbury Youth and Family Services Commission is comprised of nine voting members, four non-voting members, and two high school student members. During the past year the Commission has been reviewing the services provided by the three components of the agency: Clinical Services, Outreach Services, and Creative Experiences. The Commission works closely with the agency director on numerous community/school projects. Members of the Commission are actively serving on other community/school development projects to better serve the needs of the Town.

ZONING BOARD OF APPEALS

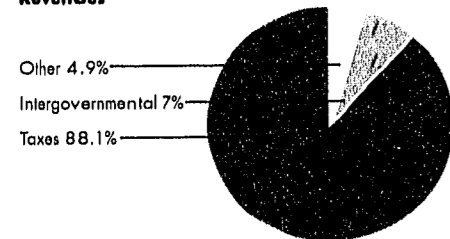
It is the responsibility of the Zoning Board of Appeals to make fair and impartial decisions regarding zoning applications where unusual or non-conforming situations exist. The impact of those decisions to the adjacent property owners and the welfare of the Town are relevant factors in the Board's decision.

This Board is charged with the hearing of appeals from citizens concerning variances, special exceptions, motor vehicle site approvals and decisions of the Building Official.

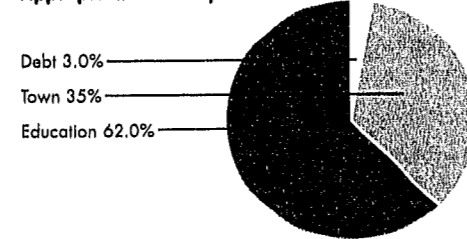
STATEMENT OF REVENUES, EXPENDITURES AND CHANGES IN FUND BALANCE-BUDGET AND ACTUAL-GENERAL FUND FOR THE YEAR ENDED JUNE 30, 1994

	Amended Budget	Actual	Variance Favorable (Unfavorable)
Revenues:			
Property taxes	\$51,378,498	\$51,014,527	\$ (363,971)
Licenses and permits	365,000	491,595	126,595
Intergovernmental	3,790,504	4,001,960	211,456
Charges for services	1,028,000	1,162,798	134,798
Other revenues	901,550	1,148,029	246,479
Total Revenues	\$57,463,552	\$57,818,909	\$ 355,357
Expenditures:			
Current:			
General Government	394,219	324,417	69,802
Community Development	469,580	436,548	33,032
Administrative Services	6,785,381	6,138,204	647,177
Public Safety	4,858,838	4,607,734	251,104
Public Works	5,774,996	5,411,445	363,551
Human Resources	1,242,823	1,193,037	49,786
Leisure/Culture	2,114,064	2,076,092	37,972
Contingency	129,040	11,234	117,806
Board of Education	35,939,640	35,720,823	218,817
Debt Service	1,757,954	1,744,682	13,272
Total Expenditures	59,466,535	57,664,216	1,802,319
Excess (deficiency) of revenues over expenditures	(2,002,983)	154,693	2,157,676
Other financing sources (uses):			
Operating transfers in	1,349,070	1,169,436	(179,634)
Operating transfers out	(577,220)	(577,220)	-
Total Other Financing Sources	771,850	592,216	(179,634)
Excess (deficiency) of revenues and other financing sources over expenditures & other financing uses	\$(1,231,133)	746,909	\$1,978,042
Fund Balance, July 1		6,605,268	
Fund Balance, June 30		\$ 7,352,177	

Revenues



Appropriations & Expenditures



GLASTONBURY GENERAL FUND
COMPARATIVE BALANCE SHEET - JUNE 30, 1994 AND 1993

	1994	1993
ASSETS		
Cash and cash equivalents	\$9,064,081	\$8,405,826
Receivables:		
Property taxes	2,454,722	2,443,212
Other	185,038	65,570
Inventory	191,175	203,069
Other assets	4,446	6,599
Total Assets	\$11,899,462	\$11,124,276
LIABILITIES AND FUND BALANCE		
Liabilities		
Accounts and other payables	\$799,214	\$414,340
Due to developers for escrow deposits	1,298,454	1,484,234
Due to others for escrow deposits	7,972	7,695
Deferred revenue	2,441,645	2,612,739
Total Liabilities	4,547,285	4,519,008
Fund balance		
Reserved for encumbrances	15,935	32,723
Unreserved:		
Designated for subsequent year's budget	1,600,00	980,000
Designated for specific purposes	267,301	201,200
Undesignated fund balance	5,468,941	5,391,345
Total Fund Balance	7,352,177	6,605,268
Total	\$11,899,462	\$11,124,276

A copy of the complete financial report is available at the Town Clerk's Office, Glastonbury Town Hall, 2155 Main Street, Glastonbury, CT 06033

ELECTED OFFICIALS

Board of Education
Suzanne Galvin (Chair)
Michelle Fontaine (V. Chair)
Richard C. Brown
Helen Stern
Catherine B. Geraci
Alice Maggi
Lewis A. Parker
Paul W. Collins

Board of Finance
Diane L. Northrop (Chair)
Edward F. McCabe (V. Chair)
Edward B. Dingley
Walter F. Hemlock
James R. McIntosh
Constantine Constantine

Board of Tax Review
Shaun O'Rourke
David Motycka
William Holmes
Joan Palatine
Dennis C. Cavanaugh

Fire Commission
Gilbert D. Spencer (Chair)
Peter Deich (V. Chair)
Chandra Stino (Secretary)
Norman Fierravanti
Arnold H. Higgins
Brian E. Tyrol

Town Council
Paul M. Nye (Chair)
Kurt P. Cavanaugh (V. Chair)
Charles L. Monaco
George M. Purtill
Thomas F. Flanagan
Judith A. Stearns
Joe Broder
William M. Dufford
H. David Megaw

Zoning Board of Appeals
Robert Gamer
Gerald Daly
John C. Linderman
Sandra O'Leary
Michael H. Clinton
Alternates:
Lou Jonah
David Norige
Dorothy S. Peltzer

Registrars of Voters
Carolyn Larson
Joan Kemble

Probate Judge
Donald Hamer

State Representatives
Sonya Googins
Richard Veltri

State Senator
Paul Munns

U.S. Representative
Barbara Kennelly

APPOINTED OFFICIALS

Agricultural Advisory Committee
J. Baylis Earle (Chair)
Mario Accornero
Louis Bussa
Henry Rose
Richard Ferrari
Deborah McIntosh
Michael Longo

Building Board of Appeals
(Code Rev. Committee)
David B. Cox (Chair)
Calvin J. Carini
James W. Dutton
Graham Tyrol
Charles W. Brown

Cable TV Advisory Committee
Stephen Jacoby
Stanley Zwirn
Vincent A. Fandetti

Commission on Aging
William McGaw Jr. (Chair)
Warren Kreiner (V. Chair)
Monica Shea
Audrey Quinlan
Ernest F. Reale
Elizabeth Glamalis
Frank B. Dibble

Community Beautification Committee
Robert G. Shipman
Donald B. Reid
Marti Curtiss
Della Winans
Lewis Middleton
David Flattery
Elizabeth Lynch

Conservation Commission
Peter M. Stern (Chair)
Edward A. Richardson
Judy Harper
Karl J. Wagener
James Bingham
William Patrick
Gerhard R. Schade

Economic Development Commission
Robert Mulcahey (Chair)
B. Kent Sleath
Richard A. Katz
John Farley
Walter L. Erley
James M. Lynch
Peter J. Preisner

Fair Rent Commission
John H. Roughan (Chair)
Brian Connors
Frank Giantonio
Andrea Broder
John C. Hilton
Paul Feherston
Glenda Rose

Fine Arts Commission
David Blanchard
Jack Morris
Doris S. O'Rourke
Candace Satin
Charlene Vehlles
Bonnie Ferris
Cynthia Filton
Diana Kamis
Natalie Rice
Carol Ahlschlager
Steven Molaver
Gladys Nelson
Ann Larson
Philomena Pappa
Mary Jane Sullivan

Glastonbury Housing Partnership
Judy Harper
Camille Bushnell
Brian Tyrol
Ellen Carter
H. Buhl Kent
Howard O'Connell
Robert Arnold
George Allen
B.W. Erk
Barbara Ward
Sonya Googins

Great Pond Stewardship Committee
William Reed
David Bodznick
Jolly Steffens
Judith Stearns
David Gumbart
George Putrill
Tom Mocko

Historic District Commission
Mary Lou Barrett (Chair)
Louise Walker
Thomas Theurkauf
E. Marston Moffatt
Galen Sheperd
Alternates:
Dennis Pepe
Marcia Olsson
Charles L. Miller

Housing Code of Appeals
Nelson C. L. Brown
Kristin Brown
Patricia Moriarty

Human Relations Commission
John C. Glezen
Kim McClain
Carl E. Hein
Sandra Hassan
Maureen Shannon

Incorporators of the Free Academy
Richard Mihm
Helen Stern
Inez Hemlock

Insurance Advisory Committee
William Bland
Frank D. Anderson
Robert J. Hager
William Fochi
Mark E. Zimmerman
Stephen J. Ludwig
David Hoopes

Jury Committee
David Evans
Lucretia Seidel
Marcia W. Erley

Public Buildings Commission
David B. Cox (Chair)
W. Michael Low
Paul Haas Jr.
Edward J. Kamis
Gus Constantine
Suzanne Galvin
Blakeslee Lloyd
Scott Tyrol

Public Housing Authority
James F. Noonan (Chair)
Craig Fontaine
Zelda Lessne
Minnie Rhinehart
Richard H. Inman

Recreation Commission
Betsy Katz (Chair)
Lynn Hazard
Jack Ellovich
Jollie Steffens
J. Baylis Earle
Fred Clark, Jr.

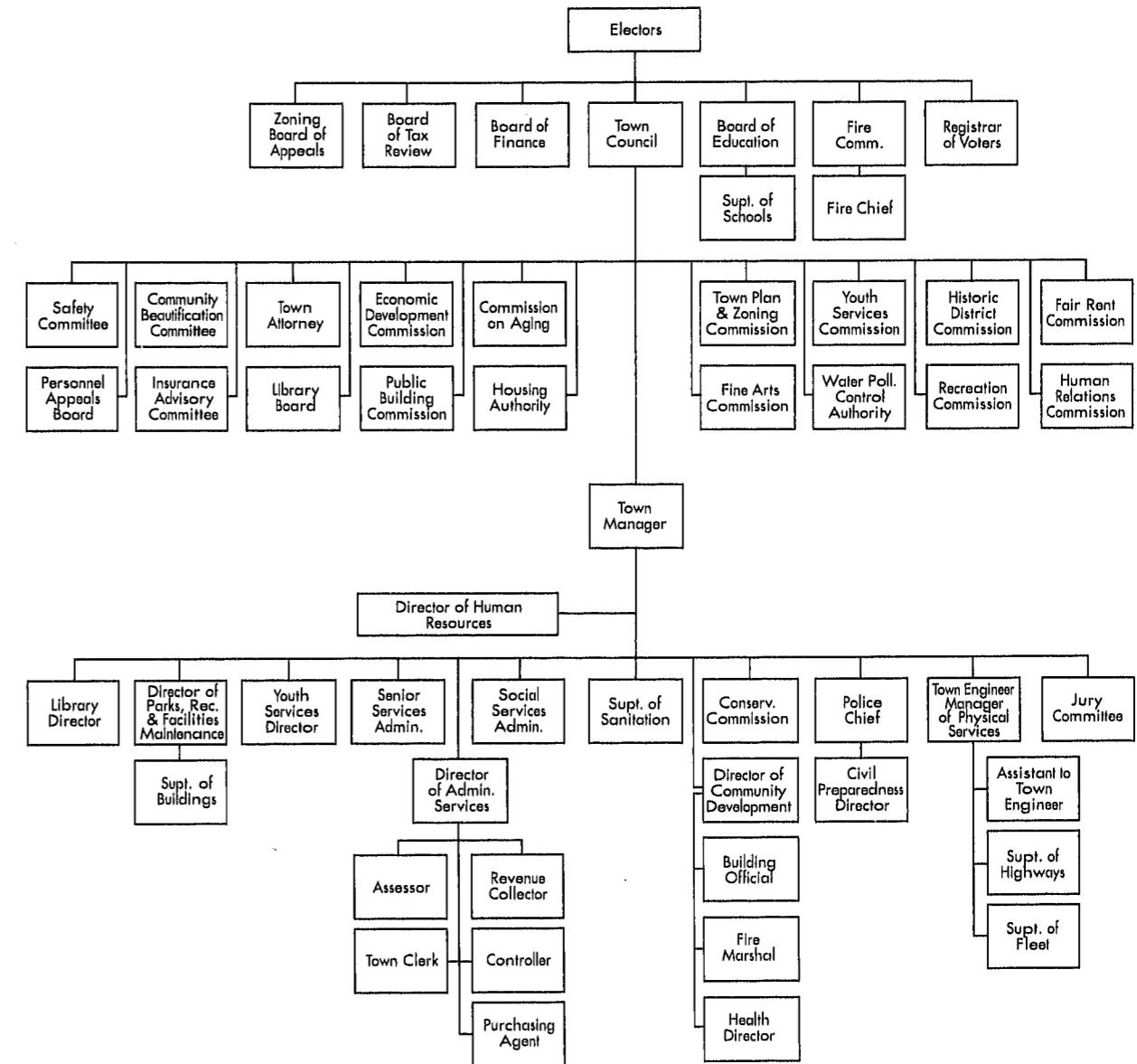
Town Planning & Zoning Commission
Dr. Michael F. Lepore (Chair)
Tom I. Dolan
Scott Lessne
Barbara A. Nebb
H. Buhl Kent
Mark K. Branse
Alternates:
Jane Sleath
Laurence Valleries
Olga M. Corban

Welles-Turner Library Board
Gloria Avitabile (Chair)
Jane Brown
Della Schultz
H. Kennedy Hudner
Blakeslee Lloyd
Martha A. Poole

Youth & Family Services Commission
Stephen Jacoby (Chair)
Richard H. King (V. Chair)
Shana Ellovich
Susan Motycka
Tricia Dougherty
Karen Klingensmith
Patricia Low
Lucl Leone
Cathy Vacchelli

Safety Committee
Albert Phillips (Chair)
Brian Comerford
Gloria Zwirn
Carol Hilton
Helen Litwin
Whitney Smith
Michael P. Thurz

Water Pollution Control Authority
Bradley Northrop (Chair)
Nils G. Carlson
John C. Gavin
Patricia V. Bussa
Robert Jordan
Carmine Biello
William H. Habicht



Town Manager
Richard J. Johnson

Chief of Police
James M. Thomas

Community Development Director
Kenith E. Leslie

Director of Finance and Administrative Services
G. Ted Ellis

Director of Human Resources
Susan J. Hebert

Town Engineer/Manager of Physical Services
John H. McGrane

Assessor
Leon Jendrzejczyk

Assistant to Town Engineer
Chester G. Hamlin

Building Official
Edward P. Pietrycha

Civil Preparedness
Robert F. DiBella

Collector of Revenue
Madeline Rettberg

Controller
Lisa A. Martin

Director of Health
David Boone

Director of Parks, Recreation & Facilities Maintenance
Raymond E. Purtell

Fire Chief
Bernard Dennler

Fire Marshal
Christopher Siwy

Fleet Superintendent
Thomas O. Tierney

Highway Superintendent
Scott G. Zenke

Housing Authority Director
Ivan Pour

Library Director
vacant

Purchasing Agent
John A. Makiaris

Senior Services Administrator
Patricia R. Schneider

Social Services Administrator
Jo-Ann Dorn

Superintendent of Buildings
David Sacchitella

Superintendent of Sanitation
Michael J. Bisi

Town Attorney
William S. Rogers

Town Clerk
Edward J. Friedeberg

Youth and Family Services Director
Edmund J. Meincke

TOWN ADMINISTRATION

For Information On	Call	Phone
Accounts Payable	Accounting	652-7595
Administration	Town Manager	652-7500
Assessment	Assessor	652-7600
Birth Certificates	Town Clerk	652-7616
Building Permits	Building Office	652-7521
Children's Department	Welles-Turner Library	652-7718
Civil Preparedness	Civil Preparedness	652-7576
Death Certificates	Town Clerk	652-7616
Deeds	Town Clerk	652-7616
Demolition Permits	Building Office	652-7521
Dog Licenses	Town Clerk	652-7616
Dog & Animal Problems	Animal Control Officer	633-8301
Drainage Problems	Engineering	652-7735
Electrical Permits	Building Office	652-7521
Elderly Dial-A-Ride	Senior Services	652-7643
Elderly Municipal Agent	Senior Services	652-7642
Engineering	Engineering	652-7735
Health Matters	Health Department	652-7534
Highways	Highway Superintendent	652-7749
Inland Wetlands	Community Development	652-7510
Landfill Permits	Engineering	652-7735
Library	Welles-Turner Library	652-7719
Reference Department	Welles-Turner Library	652-7720
Marriage Licenses	Town Clerk	652-7616
Nursing	Visiting Nurse Association	633-3521
Personnel	Human Resources/Personnel	652-7501
Planning	Community Development	652-7510
Plumbing & Heat Permits	Building Office	652-7521
Police & Fire Emergencies	Police Department	911
Probate Court	Judge	652-7629
Recreation	Recreation Department	652-7679
Recreation Scheduling	Answering Machine	652-7689
Registration of Voters	Registrar of Voters	652-7627
Sanitary Inspection	Health Department	652-7534
Snow Removal & Streets	Highway Superintendent	652-7749
Street & Traffic Control	Police Department	633-8301
Signs	Police Department	633-8301
Taxes	Collector of Revenue	652-7614
Trees	Parks and Recreation	652-7679
Voting	Registrar of Voters	652-7627
Welfare	Social Services	652-7638
Youth & Family Services	Youth & Family Services	652-7660

BOARD OF EDUCATION

Central Office	Contact Person	Phone
Superintendent of Schools	Jacqueline Jacoby	652-7961
Assistant Superintendent	Edward Schofield	652-7965
Business Manager	Sharon Smith	652-7941
Food Services Director	Brad Devlin	652-7948
Transportation/ Communication	Rita Gagnon	652-7951
Curriculum Director		
Art	Daniel Roach	652-7954
Athletics	Raymond Nicoletta	652-7234
English	Richard Dlugos	652-7967
Foreign Language	Christine Brown	652-7954
Math	Linda Ball	652-7967
Music	Leslie Hunt	652-7954
Physical Education/Health	Basil Roberts	652-7253
Science	Kenneth Roy	652-7250
Social Science	Deborah Willard	652-7967
Vocational Education	Katherine Brophy	652-7249
Guidance Department/ Director	Virginia Gordon	652-7211
Special Education	Gina Vance	652-7971
Special Education	Gary Nolf	652-7971
Glastonbury High School		
Principal	Alan Bookman	652-7204
Gideon Welles School		
Principal	Thomas Russo	652-7800
Academy School		
Principal	Carol Sue Schmidt	652-7835
Buttenball School		
Principal	Patricia DaSilva	652-7276
Eastbury School		
Principal	William McDermott	652-7858
Hebron Avenue School		
Principal	Mary Ann Manchester	652-7875
Hopewell School		
Principal	Peter Maluk	652-7897
Naubuc School		
Principal	D. Patricia Hatch	652-7918

**Fire & Police Emergency
911**
**Routine Calls Police Department
633-8301**

DESIGN: Carla Willey Design PRINTING: Hall & Bill Printing Company



Made from recycled paper – recyclable