

# **ADDENDUM NO. 1**

**TOWN OF GLASTONBURY  
GL-2017-22  
STATE PROJECT NO. 0053-0188  
FEDERAL AID PROJECT NO. 6053(009)**

**REPLACEMENT OF BRIDGE NO. 05608  
EASTERN BOULEVARD OVER SALMON BROOK  
GLASTONBURY, CONNECTICUT**

*Prepared by*

**GM2 Associates  
115 Glastonbury Blvd.  
Glastonbury, CT 06033  
860-659-1416**



February 23, 2017

REPLACEMENT OF BRIDGE NO. 05608  
EASTERN BOULEVARD OVER SALMON BROOK  
GLASTONBURY, CONNECTICUT

STATE PROJECT NO. 0053-0188  
FEDERAL AID PROJECT NO. 6053(009)

ADDENDUM NO. 1

FEBRUARY 23, 2017

This Addendum addresses the following questions and responses asked on the project.

Questions and Responses Nos. 1,2,3 and 4 are included.

**REVISED SPECIAL PROVISIONS**

The following Special Provisions are hereby deleted in their entirety and replaced with the attached like-named Special Provisions:

- CONTRACT TIME AND LIQUIDATED DAMAGES
- SECTION 1.07 LEGAL RELATIONS AND RESPONSIBILITIES
- SECTION 1.08 PROSECUTION AND PROGRESS
- ITEM #1408455 - TEMPORARY SANITARY SEWER BYPASS

**PLANS**

**REVISED PLANS**

The following Plan Sheets are hereby deleted and replaced with the like-numbered Plan Sheets:

- SHEET NO. 6.A1 (HWY-03)
- SHEET NO. 15.A1 (HWY-12)

## **QUESTIONS AND RESPONSES**

- Q1. According to the Special Provision for Item# 1408455 -Temporary Sanitary Sewer Bypass, "all bypass pumping systems shall be manned by the Contractor during non-working hours, seven (7) days per week as necessary." With the inclusion of a stand-by pump and an auto dialer (with associated float switches), is 24 hour, seven days per week manning required?
- R1. The Contractor shall be responsible for maintaining wastewater flow in all public and private pipes during construction. All bypass pumping systems shall be monitored by the Contractor during non-working hours, seven (7) days per week. Automated monitoring of pump activity will be as specified in the special provisions and as approved by the engineer.  
Please see ITEM #1408455 - TEMPORARY SANITARY SEWER BYPASS, as revised under Addendum No. 1.
- Q2. Do you have flow rates on the sewer?
- R2. Existing Sewer rates are not available at the time of this response. Please see ITEM #1408455 - TEMPORARY SANITARY SEWER BYPASS, as revised under Addendum No. 1. Contractor shall maintain 100% of the maximum capacity of the pipes being bypassed.
- Q3. Is this a state project?
- R3. This is a Federal Local Bridge Project administered by the Town and inspected by GM2 Associates for the Town. The Department of Transportation District 1 does provide oversight through their Municipal System Advisory Team (MSAT).
- Q4. How far do the steel beams supporting the sewer extend?
- R4. The proposed concrete encasement details are indicated on Contract Plan Sheet No. 6 (Hwy Drawings No. HWY-03). The concrete encasement, including the W14x29 Support Beams, shall be continuous and extend from the southerly Abutment No. 1 to the northerly Abutment No. 2.

Pre-Bid Conference Attendance Sheets are also attached.

The Detailed Estimate Sheet does not reflect this change.

The Schedule of Prices has been revised as a result of this addendum.

There will be no change in the number of calendar days due to this Addendum.

The items set forth herein, whether of omission, addition, substitution or other change, are all to be included in and form a part of the proposed Contract Documents for the work.

**TOWN OF GLASTONBURY  
SCHEDULE OF PRICES  
FOR THE CONSTRUCTION OF  
STATE PROJECT NO. 0053-0188, FA #6053(009)  
REPLACEMENT OF BRIDGE NO. 05608  
EASTERN BOULEVARD OVER SALMON BROOK  
IN THE TOWN OF GLASTONBURY**

DATE OF  
BID OPENING March 1, 2017

TIME: 11:00 A.M. NO LATE BIDS WILL BE ACCEPTED "NO EXCEPTIONS"

Note: --- The bidder shall fill in, under the column "Unit Prices Bid," the unit prices, written in words and in numbers, for which he proposes to perform the various items of work called for, and under the column headed "Amount," the amount of each of the items at the unit price bid. After the proposal is opened and read, the quantities will be extended and totaled in accordance with the written bid prices and the bid will be verified or corrected.

Item Number	Items	Unit	Approximate Quantities	Unit Prices Bid		Amount (Figures)
				Figures	Writing	
0201002A	Clearing and Grubbing	L.S.	1			
0202000	Earth Excavation	c.y.	350			
0202216A	Excavation and Reuse of Existing Channel Bottom Material	c.y.	150			
0202451A	Test Pit Excavation	c.y.	13			
0202529	Cut Bituminous Concrete Pavement	lf.	75			
0203000	Structure Excavation - Earth (Complete)	c.y.	340			
0204151A	Handling Water	L.S.	1			
0205003	Trench Excavation 0'-10' Deep	c.y.	142			
0205005	Trench Excavation 0'-15' Deep	c.y.	85			
0209001	Formation of Subgrade	s.y.	490			
0210100	Anti-Tracking Pad	s.y.	50			
0212001A	Gravel Subbase	c.y.	136			
0213100	Granular Fill	c.y.	15			
0216000	Pervious Structure Backfill	c.y.	250			
0219001	Sedimentation Control System	lf.	600			
0305000	Processed Aggregate	ton	40			
0406010-1	Bituminous Concrete - Class 1	ton	138			
0406010-2	Bituminous Concrete - Class 2	ton	20			
0406010-4	Bituminous Concrete - Class 4	ton	169			
0406236	Material for Tack Coat	gal	70			
0406275A	Fine Milling of Bituminous Concrete (0" to 4")	s.y.	155			
0406311A	Sawing and Sealing Joints in Bituminous Concrete Overlay	lf.	65			
0503890A	Removal of Existing Bridge	L.S.	1			
0507001	Type "C" Catch Basin	ea.	1			
0507091	Special Round Type "C" Catch Basin over 10' Deep	ea.	1			
0507781	Reset Manhole	ea.	2			
0514203	Prestressed Deck Units (3'-0" x 1'-6")	lf.	95			
0514223	Prestressed Deck Units (4'-0" x 1'-6")	lf.	379			
0520036A	Asphaltic Plug Expansion Joint System	c.f.	27			
0521021A	Steel Laminated Elastomeric Bearings	c.i.	13230			
0601091A	Simulated Stone Masonry	s.y.	5			
0601201	Class "F" Concrete	c.y.	150			

Kindly insert here the total amount of your Bid \$ \_\_\_\_\_  
It is understood that the unit prices shall govern in case of discrepancy  
between the unit-prices and this amount.  
This bid includes addenda no.: \_1\_

**TOWN OF GLASTONBURY  
SCHEDULE OF PRICES  
FOR THE CONSTRUCTION OF  
STATE PROJECT NO. 0053-0188, FA #6053(009)  
REPLACEMENT OF BRIDGE NO. 05608  
EASTERN BOULEVARD OVER SALMON BROOK  
IN THE TOWN OF GLASTONBURY**

DATE OF  
BID OPENING March 1, 2017

TIME: 11:00 A.M. NO LATE BIDS WILL BE ACCEPTED "NO EXCEPTIONS"

Note: --- The bidder shall fill in, under the column "Unit Prices Bid," the unit prices, written in words and in numbers, for which he proposes to perform the various items of work called for, and under the column headed "Amount," the amount of each of the items at the unit price bid. After the proposal is opened and read, the quantities will be extended and totaled in accordance with the written bid prices and the bid will be verified or corrected.

Item Number	Items	Unit	Approximate Quantities	Unit Prices Bid		Amount (Figures)
				Figures	Writing	
0601276A	Precast Structure Elements	c.y.	106			
0601363A	Concrete Encasement	c.y.	5			
0601504	1" Preformed Expansion Joint Filler for Bridges	s.f.	365			
0602000	Deformed Steel Bars	lb.	4750			
0602006	Deformed Steel Bars - Epoxy Coated	lb.	16700			
0603592A	Structural Steel Supports for Utilities on Bridge	Cwt.	8			
0651001	Bedding Material	c.y.	6			
0651012	15" R.C. Pipe	l.f.	28			
0651017	30" R.C. Pipe	l.f.	17			
0701190	Obstructions	hr.	16			
702062	Furnishing Drilled Shaft Drilling Equipment	L.S.	1			
702072	Drilled Shaft Rock Excavation (2.5 Ft.)	l.f.	32			
0702090	Drilled Shaft (3.0 Ft.)	l.f.	136			
0702091	Drilled Shaft Earth Excavation (3.0 Ft.)	l.f.	136			
0703011	Intermediate Riprap	c.y.	55			
0707009A	Membrane Waterproofing (Cold Liquid Elastomeric)	s.y.	305			
0708001	Dampproofing	s.y.	120			
0755009	Geotextile	s.y.	105			
0813012	5" x 18" Granite Stone Curbing	l.f.	170			
0813013	5" x 18" Granite Curved Stone Curbing	l.f.	50			
0815001	Bituminous Concrete Lip Curbing	l.f.	130			
0815091	Removal of Bituminous Concrete Lip Curbing	l.f.	90			
0817015A	5" x 8" Granite Stone Curbing for Bridges	l.f.	145			
0822001	Temporary Precast Concrete Barrier Curb	l.f.	80			
0904990A	Metal Bridge Rail	l.f.	99			
0910023	R-B Terminal Section	ea.	2			
0910170	Metal Beam Rail (Type R-B 350)	l.f.	100			
0910173	R-B 350 Bridge Attachment - Vertical Shaped Parapet	ea.	4			
0911924	R-B End Anchorage-Type II	ea.	2			
0912503	Remove Metal Beam Rail	l.f.	125			
0921002A	Concrete Sidewalk - 8" Thick	s.f.	440			
0921003A	Concrete Sidewalk	s.f.	440			

Kindly insert here the total amount of your Bid \$ \_\_\_\_\_  
It is understood that the unit prices shall govern in case of discrepancy  
between the unit-prices and this amount.  
This bid includes addenda no.: \_1\_

**TOWN OF GLASTONBURY**  
**SCHEDULE OF PRICES**  
**FOR THE CONSTRUCTION OF**  
**STATE PROJECT NO. 0053-0188, FA #6053(009)**  
**REPLACEMENT OF BRIDGE NO. 05608**  
**EASTERN BOULEVARD OVER SALMON BROOK**  
**IN THE TOWN OF GLASTONBURY**

DATE OF  
 BID OPENING March 1, 2017

TIME: 11:00 A.M. NO LATE BIDS WILL BE ACCEPTED "NO EXCEPTIONS"

Note: --- The bidder shall fill in, under the column "Unit Prices Bid," the unit prices, written in words and in numbers, for which he proposes to perform the various items of work called for, and under the column headed "Amount," the amount of each of the items at the unit price bid. After the proposal is opened and read, the quantities will be extended and totaled in accordance with the written bid prices and the bid will be verified or corrected.

Item Number	Items	Unit	Approximate Quantities	Unit Prices Bid		Amount (Figures)
				Figures	Writing	
0922501A	Bituminous Concrete Driveway	s.y.	157			
0944000A	Furnishing and Placing Topsoil	s.y.	540			
0949876	Cornus Amomum, Silky Dogwood, 24" 36" Ht.	ea.	3			
0950005A	Turf Establishment	s.y.	540			
0969060A	Construction Field Office, Small	mo.	12			
0970006A	Trafficperson (Municipal Police Officer)	EST.	1	\$17,000.00	Seventeen Thousand Dollars and no cents	\$17,000.00
0970007A	Trafficperson (Uniformed Flagger)	hr	200			
0971001A	Maintenance and Protection of Traffic	L.S.	1			
0975004	Mobilization and Project Closeout	L.S.	1			
0976002	Barricade Warning Lights - High Intensity	day	2520			
0978002	Traffic Drum	ea.	30			
0979003	Construction Barricade Type III	ea.	9			
0980001	Construction Staking	L.S.	1			
0981100	42" Traffic Cone	ea.	70			
1131002A	Remote Control Changeable Message Sign	day	30			
1205209	Type DE-9 Delineator	ea.	4			
1206023A	Removal and Relocation of Existing Signs	L.S.	1			
1208932	Sign Face - Sheet Aluminum (Type IV Retroreflective Sheeting)	s.f.	27			
1210101	4" White Epoxy Resin Pavement Markings	l.f.	530			
1210102	4" Yellow Epoxy Resin Pavement Markings	l.f.	500			
1210105	Epoxy Resin Pavement Markings, Symbols and Legends	s.f.	50			
1220027	Construction Signs	s.f.	275			
1301084A	12" Ductile Iron Pipe (Water Main)	l.f.	150			
1401256A	Concrete Encased Ductile Iron Sewer Pipe	L.S.	1			
1408455A	Temporary Sanitary Sewer Bypass	L.S.	1			
1504010A	Temporary Support of Utilities	L.S.	1			

Kindly insert here the total amount of your Bid \$ \_\_\_\_\_  
 It is understood that the unit prices shall govern in case of discrepancy between the unit-prices and this amount.  
 This bid includes addenda no.: \_1\_

TOWN OF GLASTONBURY  
SCHEDULE OF PRICES  
FOR THE CONSTRUCTION OF  
STATE PROJECT NO. 0053-0188, FA #6053(009)  
REPLACEMENT OF BRIDGE NO. 05608  
EASTERN BOULEVARD OVER SALMON BROOK  
IN THE TOWN OF GLASTONBURY

DATE OF  
BID OPENING March 1, 2017

TIME: 11:00 A.M. NO LATE BIDS WILL BE ACCEPTED "NO EXCEPTIONS"

**CONTRACT TIME AND LIQUIDATED DAMAGES**

In order to minimize the hazard, cost and inconvenience to the traveling public and pollution of the environment, it is necessary to limit the time of construction work, which interferes with traffic as specified in Article 1.08.04 of the Special Provisions.

There will be two assessments for liquidated damages and they will be addressed in the following manner:

1. For this contract, an assessment per day for liquidated damages, at a rate of Two Thousand One Hundred Dollars (\$2,100.00) per day shall be applied to each calendar day the work runs in excess of the One Hundred and Ninety-four (194) allowed calendar days for the contract.
2. For this contract, the Contractor will be allowed to close Eastern Boulevard at the project limits and detour traffic as shown on the contract plans for a period of upto one hundred and twenty (120) days or until September 30, 2017, whichever is earlier. The Contractor shall provide the proposed dates of the detour to the town at least fourteen (14) days in advance for approval. The detour period shall be utilized by the Contractor for performance of demolition and reconstruction work. The bridge shall not be reopened to normal traffic operations until all replacement work is completed, final guiderail is installed, the final course of bituminous concrete pavement is in place and the Engineer's approval of the work is obtained. If the Contractor fails to complete the work stated above and obtain the Engineer's approval to open Eastern Boulevard to normal traffic operations after the one hundred and twenty (120) day detour period has expired or after September 30, 2017, whichever is earlier, a liquidated damage charge will be assessed at a rate of Two Thousand Four Hundred Dollars (\$2,400.00) per day for each day, up to a maximum of One Hundred Thousand Eight Hundred Dollars (\$100,800.00).

**Note: PRIME CONTRACTOR'S REQUIREMENTS:**

- A. Proposal Guaranty (Bid Bond): Except when otherwise specified, no proposal will be considered unless accompanied by a proposal guaranty in the form of a bond furnished by a surety company, satisfactory to the Engineer, in an amount equal to at least 30% of the amount of the bid, or unless the bidder has on file in the Town, an annual bid bond in the proper amount.  
The surety must be a corporate surety licensed to sign surety bonds in the State of Connecticut.
- B. Not less than 12% of the total Contract value shall be subcontracted to, performed by, and paid to DBE.
- C. If the Contractor is unable to fulfill the DBE's percentage requirement, he may request an exception of the above percentage, by completing and submitting to the Town, the "Application for Review of Pre-award Good Faith Efforts", as contained in the General Provisions.
- D. Contractors must make sure that at the time of bidding, their Firms have an approved Affirmative Action Plan with the State of Connecticut, Department of Transportation.
- E. The low bidder is required to submit to the Town, both a Certificate of Insurance (including Builder's Risk) and a Workers' Compensation Certificate on or before the signing of the Contract.
- F. Statement of Bidder's Qualifications: Each bidder is required to submit to the Town a recent sworn statement of the bidder's qualifications the form furnished by the Town for this purpose.
- G. Contracts will not be awarded until the above requirements have been submitted and approved.
- H. Please be aware that the Town, prior to the awarding of the Contract, may require further financial and other information from any applicant who becomes the low bidder for that Contract.
- I. The apparent low bidder, as determined by the Town of Glastonbury immediately after the bid opening, shall submit the Pre-award DBE Commitment Approval request form(s) to the Town of Glastonbury no later than five days after the bid opening. This is a requirement of Title 49, Code of Federal Regulations (CFR) Part 26, Participation of DBE's. Failure to comply with this requirement may be cause for rejection of the bid.

Kindly insert here the total amount of your Bid \$ \_\_\_\_\_  
It is understood that the unit prices shall govern in case of discrepancy  
between the unit-prices and this amount.  
This bid includes addenda no.: \_1\_

**DATE: September 13, 2016**  
**FEDERAL PROJECT NO. 6053(009)**  
**STATE PROJECT NO. 0053-0188**

**Replacement of Bridge No. 05608**  
**Eastern Boulevard over Salmon Brook**  
**Town of Glastonbury**

The State of Connecticut, Department of Transportation, Standard Specifications for Roads, Bridges, Facilities and Incidental Construction, Form 817, 2016, is hereby made part of this contract, as modified by the Special Provisions contained herein. The current edition of the State of Connecticut Department of Transportation's "Construction Contract Bidding and Award Manual" ("Manual"), is hereby made part of this contract. If the provisions of this Manual conflict with provisions of other Department documents (not including statutes or regulations), the provisions of the Manual will govern. The Manual is available upon request from the Transportation Manager of Contracts. The Special Provisions relate in particular to the replacement of Bridge No. 05608 in the Town of Glastonbury.

**CONTRACT TIME AND LIQUIDATED DAMAGES**

In order to minimize the hazard, cost and inconvenience to the traveling public and pollution of the environment, it is necessary to limit the time of construction work, which interferes with traffic as specified in Article 1.08.04 of the Special Provisions.

There will be two assessments for liquidated damages and they will be addressed in the following manner:

1. For this contract, an assessment per day for liquidated damages, at a rate of Two Thousand One Hundred Dollars (\$2,100.00) per day shall be applied to each calendar day the work runs in excess of the One Hundred and Ninety-four (194) allowed calendar days for the contract.
2. For this contract, the Contractor will be allowed to close Eastern Boulevard at the project limits and detour traffic as shown on the contract plans for a period of up to one hundred and twenty (120) days or until September 30, 2017, whichever is earlier. The Contractor shall provide the proposed dates of the detour to the town at least fourteen (14) days in advance for approval. The detour period shall be utilized by the Contractor for performance of



demolition and reconstruction work. The bridge shall not be reopened to normal traffic operations until all replacement work is completed, final guiderail is installed, the final course of bituminous concrete pavement is in place and the Engineer's approval of the work is obtained. If the Contractor fails to complete the work stated above and obtain the Engineer's approval to open Eastern Boulevard to normal traffic operations after the one hundred and twenty (120) day detour period has expired or after September 30, 2017, whichever is earlier, a liquidated damage charge will be assessed at a rate of Two Thousand Four Hundred Dollars (\$2,400.00) per day for each day, up to a maximum of One Hundred Thousand Eight Hundred Dollars (\$100,800.00).

A day shall be defined as a 24 hour period and will be measured by the actual commencement time of the detour.

For example, if the detour begins at:

10:00 A.M. on Sunday – 10:00 A.M. on Monday = One Day

Time accrued from 10:01 A.M. on Monday shall be counted towards the next sequential day.

**SECTION 1.07**  
**LEGAL RELATIONS AND RESPONSIBILITIES**

**1.07.01—Laws to be Observed:** is amended as follows:

In the second sentence of the first paragraph, after the word "State" add the words "and Municipality".

**1.7.3 —Proprietary Devices, Materials and Processes:** is amended as follows:

After the word "State" add the words "and Municipality" throughout this Article.

**1.7.4 —Restoration of Surfaces Opened Pursuant to Permit or Contract:** is amended as follows:

Replace the word "Department" with "Municipality" throughout this Article.

**1.07.07—Safety and Public Convenience:** is amended as follows:

In the penultimate paragraph, after the word "Department," add the words "or Municipality".

**1.7.9 —Protection and Restoration of Property:** is supplemented and amended as follows:

Add the words "or Municipality" after the word "State" wherever the word "State" appears in this Article.

Add the phrase "or Municipality, as applicable" after the word "Department" wherever the word "Department" appears in this Article.

Add the following:

The Contractor shall allow the Engineer in which the bridge project is located, seven (7) days to field review the markings and make any adjustments prior to the start of clearing operations.

All trees scheduled to be removed outside of the proposed gutter or curb lines of the highway that are designated for removal must be posted as such by the Municipality's Tree warden for a period of ten (10) days prior to removal.

The Engineer will inspect the identified trees and verify the limits of tree removal prior to the Contractor proceeding with his cutting operation, should such an operation be required elsewhere in this contract.

**1.7.10 —Contractor's Duty to Indemnify the State Against Claims for Injury or Damage:** is amended as follows:

Revise the title of this Article to read "Contractor's Duty to Indemnify the State and/or Municipality Against Claims for Injury or Damage."

In the first sentence, delete the words "the Department".

Replace the word "State" with "State and/or Municipality" throughout this Article.

Replace the word "Commissioner" with "Engineer" throughout this Article.

Add the following paragraph after the only paragraph:

"It is further understood and agreed by the parties hereto, that the Contractor shall not use the defense of Sovereign Immunity in the adjustment of claims or in the defense of any suit, including any suit between the State and/or Municipality and the Contractor, unless requested to do so by the State and/or Municipality."

**1.7.13 —Contractor's Responsibility for Adjacent Property and Services:** is supplemented with the following:

The Contractor's attention is directed to the fact that there are no utilities on the existing bridge. However, overhead utilities (including utility poles, pole guys and overhead wires) and buried utilities do exist in the immediate vicinity of the project.

The Contractor shall be liable for all damages and claims received or sustained by any persons, corporations or property in consequence of damage to the existing utilities, their appurtenances, or other facilities caused directly or indirectly by the operations of the Contractor.

The following companies and their representatives shall be contacted by the Contractor to coordinate the protection of their utilities on the construction site two (2) weeks prior to the start of any work on the project involving their utilities:

Connecticut Natural Gas Corporation  
Mr. Vasant C. Patel  
Manager – Utility Coordination  
Engineering Department  
76 Meadow Street, 1<sup>st</sup> Floor  
East Hartford, Connecticut 06108  
Phone: (860) 727-3114  
E-mail: vpatel@ctgcorp.com

CoxCom, Inc.  
Mr. Thomas Derway  
Capital/Utility Coordinator  
801 Parker Street  
Manchester, Connecticut 06045  
Phone: (860) 432-5040  
E-mail: thomas.derway@cox.com

Eversource Energy – Electric Transmission  
Mr. Daniel J. Garstka  
Senior Engineer – Transmission Siting  
66 Prospect Street  
Hartford, Connecticut 06103  
Phone: (860) 728-4533  
E-Mail: daniel.garstka@eversource.com

Frontier Communications of Connecticut  
Ms. Jan Possidente-Russo  
Manager – Conduit Construction Group  
1441 North Colony Road  
Meriden, Connecticut 06450-4101  
Phone: (203) 383-6645  
Mobile: (204) 540-8420  
E-Mail: jan.possidente-russo@ftr.com

The Metropolitan District  
Mr. Richard Norris  
MDC Utility Services Department  
555 Main Street, P.O. Box 800  
Hartford, Connecticut 06142-0800  
Phone: (860) 278-7850 ext. 3450  
E-Mail: rnorris@themdc.com

Lighttower Fiber Networks  
Mr. Eric Clark,  
Manager Fiber Construction  
1781 Highland Avenue  
Cheshire, CT 06410  
Phone: (203) 649-3904  
Mobile: (860) 863-8311  
E-Mail: eclark@lighttower.com

All work shall be in conformance with Rules and Regulations of Public Utility Regulatory Authority (PURA) concerning Traffic Signals attached to Public Service Company Poles.

**1.7.14 —Personal Liability of Representatives of the State:** is amended as follows:

Add the words "and Municipality" after the word "State".

**1.7.15 —No Waiver of Legal Rights:** is amended as follows:

Replace the words "Commissioner" and "Department" with "Municipality" or "Municipal" throughout this Article.

**1.7.16 —Unauthorized Use of Area(s) within the Project Site:** is amended as follows:

Replace the words "Commissioner" and "State" with "Municipality" throughout this Article.

Add the following new Subarticle:

**1.07.19—Personal Liability of Representatives of the Municipality**

In carrying out any of the provisions of these specifications, or in exercising any power or authority granted to them by or within the scope of the Contract, the Engineer and his authorized representatives, including consultant engineering firms and their employees, shall be subject to no liability, either personally or as officials of the Municipality, it being understood that in all such matters they act solely as agents and representatives of the Municipality.

## SECTION 1.08 PROSECUTION AND PROGRESS

Section 1.08 is supplemented and amended as follows:

Throughout this Section, make the following substitutions for all occurrences of the word(s) identified below for substitution:

Substitute "Municipality" or "Municipal" for "Department" and for "State".  
Substitute "Engineer" for "Commissioner".

**1.08.04—Limitation of Operations:** is supplemented by the following:

In order to provide for traffic operations as outlined in the Special Provision "Maintenance and Protection of Traffic," the Contractor will not be permitted to perform any work which will interfere with the described traffic operations on all project roadways as follows:

Monday through Saturday: Work shall not commence prior to 6:00 a.m. and must conclude by 6:00 p.m.

Work may only be performed on Sundays or Holidays with written permission from the Town.

### **Eastern Boulevard**

The Contractor will be permitted to close Eastern Boulevard at the project limits and detour traffic in accordance with the Detour Plan. The duration of the detour shall not exceed one hundred twenty (120) consecutive calendar days or until September 30, 2017, whichever is earlier.

The Contractor shall notify the Engineer, CTDOT District 1 and the Town of Glastonbury Town Engineer/Manager of Physical Services at least 14 days in advance of the start of the Eastern Boulevard closure.

All precast abutment elements shall be cast and approved prior to initiation of the Eastern Boulevard detour. The Assembly Plan shall be approved prior to the initiation of the Eastern Boulevard detour.

### **Additional Lane Closure Restrictions**

It is anticipated that work on adjacent projects will be ongoing simultaneously with this project. The Contractor shall be aware of those projects and anticipate that coordination will be required to maintain proper traffic flow at all times on all project roadways, in a manner consistent with these specifications and acceptable to the Engineer.

The Contractor will not be allowed to perform any work that will interfere with traffic operations on a roadway when traffic operations are being restricted on that same roadway, unless there is at least a one mile clear area length where the entire roadway is open to traffic or the closures have been coordinated and are acceptable to the Engineer. The one mile clear area length shall be measured from the end of the first work area to the beginning of the signing pattern for the next work area.

## **ITEM #1408455 - TEMPORARY SANITARY SEWER BYPASS**

### **General:**

The Contractor shall be responsible for maintaining wastewater flow in all public and private pipes during construction. All bypass pumping systems shall be monitored by the Contractor during non-working hours, seven (7) days per week as necessary. Contractor shall provide a single 115-volt, single phase autodialer and associated non-mercury float switches that shall provide 24-hr monitoring of pump activity during bypass operations and notify personnel via telephone of any alarm condition (high flow, loss of power, stand-by pump activation). Once activated, the unit will dial a telephone or pager number (up to eight maximum) of emergency personnel with a pre-recorded message stating the nature of the alarm. The Contractor shall provide cellular number(s) for auto-dialer operation. An active telephone landline will not be provided. The Contractor shall dial emergency personnel as directed by the Owner. During the installation and/or rehabilitation of sections of the sewer system, it is required that the Contractor maintain sewage flows in the system and from all abutting properties at all times. No sanitary service shall be interrupted by the Contractor except as absolutely necessary and then for only very short periods of time of no more than thirty (30) minutes and then only when coordinated with the affected property Owner.

When by-pass pumping is required the Contractor shall supply pumps, conduits, power, and other equipment to divert the flow of sewage around the section in which Work is to be performed. The by-pass system shall be, as a minimum, at least 100% of the maximum capacity of the pipes being bypassed. Contractor will be required to adjust the bypass system as required for any increased flows at time of installation, at no additional cost to the Owner. In addition, no bypass less than 100% of maximum pipe capacity would be permitted during wet weather related flows. A secondary pump is required to be on hand and within distance of by-pass site so as to maintain flow within the collection system at all times should the primary pump fail for all bypass systems.

### **Materials:**

Bypass pumping equipment shall meet following requirements

- A. All pumps used shall be centrifugal, end suction, fully automatic self-priming pumps that do not require the use of foot-valves, vacuum pumps, diaphragm pumps, or isolation valves in the priming system. All pumps used must be constructed to allow dry running for long periods of time to accommodate the cyclical nature of effluent flows shall immediately develop 25" Hg vacuum without adjustment or repair or employ level control devices to regulate on/off or variable speed of the pump. Pumps shall be low noise sound attenuated, critically silenced units, rated for 85 dba at 7 feet, and 68 dba at 30 feet.

- B. Seals shall be high pressure, mechanical self-adjusting type with silicon carbide faces capable of withstanding suction pressures to 100 psi running. The mechanical seal shall be cooled and lubricated in an oil bath reservoir, requiring no maintenance or adjustment. Pump shall be capable of running dry, with no damage, for extended periods of time. All metal parts shall be of stainless steel.

Elastomers shall be Viton. Pump end shall be manufactured to meet ISO 9002 certifications.

- C. The pumps may be electric or diesel powered or a combination of both.
- D. The Contractor shall provide the necessary start/stop controls for each pump.
- E. The Contractor shall include one stand-by pump of each size to be maintained on site.
- F. Back-up pumps shall be on-line, isolated from the primary system by a valve.
- G. Pump shall not be connected by a common suction manifold. The use of PVC or Steel Pipe with Dresser Couplings will not be accepted. All pipe or hose will be rated for 25” Hg Vacuum.
- H. In order to prevent the accidental spillage of flows, all discharge systems must be constructed of high-density polyethylene pipe with fused joints or Quick Disconnect discharge pipe with positive restrained joints, and leak proof connections. Discharge hose will only be allowed by specific permission of the Engineer. PVC pipe with glued joints, aluminum “irrigation pipe”, steel pipe or PVC pipe with Dresser couplings will not be accepted. All joints must be 100% restrained. All discharge piping must have a minimum working pressure of 50 psi or greater if required by bypass design. All force main connections shall be made by using flanged composite hose with a working pressure of 150 psi.
- I. Allowable piping materials will be fused, high-density polyethylene pipe, Quick Disconnect Pipe, or Flanged Composite Pressure Class Hose. SDR of discharge piping shall be suitable for the calculated discharge pressures. The vendor fusing the pipe must have a minimum of five (5) years’ experience fusing HDPE pipe of the same diameter required for the project.
- J. Autodialer: Contractor shall provide a single 115-volt, single phase autodialer and associated non-mercury float switches that shall provide 24-hr monitoring of pump activity during bypass operations and notify personnel via telephone of any alarm condition (high flow, loss of power, stand-by pump activation). Once activated, the unit will dial a telephone or pager number (up to eight maximum) of emergency personnel with a pre-recorded message stating the nature of the alarm. The Contractor shall provide cellular number for auto-dialer operation. An active telephone landline will not be provided. The Contractor shall Dial emergency personnel as directed by the Owner.



- K. **POWER GENERATING FACILITIES.** All power generating facilities shall be capable of providing all power necessary to operate any primary and secondary pumping systems. The facilities shall be maintained ready for use if required. The Contractor shall also have available a secondary standby generator for backup purposes of equivalent power generating capabilities. These facilities shall adhere to all noise ordinances in the Municipality the work is being performed.

**Construction Methods:**

Contractor shall provide all labor, equipment, power and materials necessary to maintain flow in existing sewers (including individual house services), and handle existing wastewater flow. Construct and maintain all temporary bypass sewers and be responsible for all bypass pumping of sewage that may be required to prevent backing up of sewage during installation of all new pipe and manhole and to allow proper inspection and testing of the new work. The Contractor shall immediately remove and dispose of all offensive matter spilled during the bypass pumping at his own expense. When the construction process entails sewer lining, the Contractor shall implement an operation that prevents backups into private services and buildings. Work shall be performed as specified in the applicable Work Specification including but not limited to notification procedures for reduced flow usage and/or sewage handling in the case of larger consumers that must have laterals maintained twenty-four hours a day, seven (7) days a week.

When bypass pumping is required the Contractor shall supply pumps, conduits, power, and other equipment to divert the flow of sewage around the section in which work is to be performed. The bypass system shall be, as a minimum, at least 100% of the maximum capacity of the pipes being bypassed. A secondary pump is required to be on hand and within distance of bypass site so as to maintain flow within the collection system at all times should the primary pump fail.

Contractor shall include all upstream construction activities, including flows generated by the Contractor.

Wastewater flows from existing sewers shall not be allowed to enter the new facilities or pipes until the new facilities or pipes have been cleaned and tested as required in the Specifications. The Contractor shall not be permitted to overflow, bypass, pump or by any other means convey sewage or drainage to any brook or water course.

Should damage of any kind occur to the existing sewers, the Contractor shall at his own expense make repairs to the satisfaction of the Engineer.

The Contractor shall be required to repair at his own expense any damage to property, public or private, caused by his operations.

Quality assurance: The bypass pumping system shall meet the requirements of all codes and regulatory agencies having jurisdiction. The Contractor shall be responsible for damage due to sewer backups or overflows onto streets, yards and unpaved areas or into buildings, adjacent ditches, storm sewers, and waterways, including any subsequent remediation measures required or made necessary by such sewer backups or overflows.

Submittals:

For bypass pumping systems, the Contractor shall submit, prior to installation, 6 (six) copies of detailed plans and description outlining all details and provisions of the temporary bypass pumping system. The submittal must contain a letter describing the written plan for maintenance of flow including the approximate period of bypass pumping associated with the pipe lining, a list of streets to be impacted, equipment to be used, including back-up equipment, a list of contacts in case of emergencies, and all other information requested by the Engineer or Owner. The plan shall be specific and complete, including such items as schedules, locations, elevations, capacities of equipment, materials and all other incidental items necessary and/or required to insure proper operation of the bypass pumping system, including protection of the access and bypass pumping locations from damage due to the discharge flows, and compliance with the requirements and permit conditions specified in these Contract Documents. No bypass pumping shall begin until all provisions and requirements have been reviewed and approved. Shop drawings shall be submitted for all pumps, piping, and appurtenances for all types and sizes of equipment required for the bypass pumping work, as required. Within fourteen (14) days of any planned bypass, the Contractor shall submit a bypass plan for any proposed bypass or dewatering activity.

The bypass pumping plan shall include but not limited to the following:

1. Staging areas and access requirements for pumps;
2. Flow stoppage system, including pipe and channel plugging method and types of plugs; No flow through plugs will be allowed for use on bypass installations associated with the work. However, Contractor may use flowthru plugs for short-term inspection/testing activities, such as vacuum testing, with the approval of the Engineer;
3. Number, size, material, location and method of installation of pump suction piping;
4. Number, size, materials, method of installation and location of installation of discharge piping;
5. Bypass pump sizes, capacity, number of each size to be on site, power requirements, diesel engine specifications, fuel tank capacity, fuel consumption requirements and method of refueling;
6. Calculations of static lift, pipe pressure rating, friction losses, and flow velocity (pump curves showing pump operating range shall be submitted);

7. Size and location of standby power generator, if required;
8. Downstream discharge plan;
9. Any thrust and restraint block sizes and locations;
10. Any temporary pipe supports and anchoring required;
11. Calculations for selection of bypass pumping pipe size;
12. Schedule for installation of and maintenance of bypass pumping lines;
13. Plan indicating selection location of bypass pumping line locations;
14. Pumps may not be benched down to make suction lift;
15. The suction side of the pumping system shall not exceed velocities of 10 feet per second. The discharge side of the pumping system shall not exceed velocities of 12 feet per second;
16. Freeze protection and noise control requirements/measures;
17. Plans showing additional maintenance and protection of traffic means are required by the Contractor's bypass pumping plan/layout.
18. Contractor shall submit Emergency Spill Plan for approval by the Engineer.

#### Field quality control and maintenance

- A. The Contractor shall perform leakage and pressure tests of the bypass pumping discharge piping using clean water prior to actual operation. The Contractor shall perform a vacuum test of all suction piping prior to actual operation. The Engineer will be given 24 hour notice prior to testing.
- B. Any time the bypass pumping system is operating, an experienced operator shall be on site to monitor the operation, adjust pump speed, valves, etc., and make minor repairs to the system and report problems.
- C. During bypass pumping, do not allow sewage to be leaked, dumped, or spilled in or onto any area outside of the existing sewer system. If a sewage leak, dump or spill occurs, Contractor shall notify the Engineer and the Owner immediately.
- D. In the event of accidental spill or overflow, immediately stop the discharge and take action to clean up, disinfect the spill and immediately notify the Owner.

- E. In the event of rain, the Contractor shall coordinate the operation of bypassing with the Owner.
- F. High flow conditions may require the Contractor to temporarily suspend work, at the Owners request. Days on which work has been suspended shall not be considered working days and no additional compensation will be provided by the Owner.
- G. 100% Spare parts for each type of pump and piping and adequate hoisting equipment for each pump and accessories should be available to the Contractor at all times.
- H. The Contractor is forbidden to discharge wastewater onto private properties, public roadways or into drainage systems, canals, channels, creeks, wetlands as delineated on the Contract Drawings, or open water courses. The Contractor shall be responsible for any wastewater spills and back-ups and the cost and fines associated with their cleanup. The Contractor shall pay for all damage caused by wastewater spills and back-ups. The Contractor is responsible to report any discharges to the proper authorities.

#### Installation and removal

- A. The Contractor shall locate his bypass pipelines to minimize any disturbance to existing utilities and traffic patterns and shall obtain approval of the pipeline locations from the Engineer and/or the governing authority having jurisdiction.
- B. During all bypass pumping operations, the Contractor shall protect existing structures and equipment from damage inflicted by any equipment. The Contractor shall be responsible for all physical damage to the existing structures and equipment caused by human or mechanical failure.
- C. Plugging or blocking of wastewater flows shall incorporate primary and secondary plugging and blocking devices. When plugging or blocking is no longer needed for performance of the Work, it is to be removed in a manner that permits the wastewater flow to slowly return to normal flows without surge, in order to prevent surcharging or other major disturbances downstream.
- D. When working inside existing structures, the Contractor shall exercise caution and comply with OSHA requirements when working in the presence of gases, combustible or oxygen-deficient atmospheres, and confined spaces.
- E. Upon completion of the bypass pumping operations, and after the receipt of written permission from the Owner, the Contractor shall remove all the piping, restore all property to pre-construction condition and restore all pavement.

- F. When bypass pumping operations are complete, piping shall be drained into the sewer and piping shall be flushed prior to disassembly.

**Performance**

- A. The Contractor shall provide, maintain and operate all temporary facilities such as dams, plugs, pumping equipment (both primary and back-up units as required), conduits, all necessary power, and all other labor and equipment necessary to intercept wastewater flow before it reaches the point where it would interfere with the Work.
- B. The Contractor shall provide all necessary means to safely convey wastewater flow past the Work. The Contractor shall not be permitted to stop or impede the main flows under any circumstances.
- C. The Contractor shall maintain wastewater flow around the Work in a manner that will not cause surcharging of sewers, damage to sewers and that will protect public and private property from damage and flooding. The wastewater flow shall be maintained in a manner that protects downstream processes at the Water Pollution Control Facility from flooding and does not affect the quality of wastewater treatment as determined solely by the Owner.
- D. The bypass system shall not require excavation to reduce the suction lift without the specific approval of the Engineer.
- E. The Contractor shall protect water resources wetlands and other natural resources during performance of the Work.
- F. The temporary bypass system must remain in operation until normal wastewater flow can be completely restored.

**Method of Measurement:**

Payment under “Temporary Sanitary Sewer Bypass” shall be at the contract lump sum price which shall include all tools, material, equipment, labor and work incidental to the construction; reconstruction; if required.

**Basis of Payment:**

Payment for this item will be made at the contract lump sum price for “Temporary Sanitary Sewer Bypass”, complete and accepted, which price shall include all tools, material, equipment, labor and work incidental to the construction; reconstruction; if required.

OPTIONAL PRE-BID MEETING SIGN-IN SHEET

SOLICITATION NUMBER	GL-2017-22	SOLICITATION NAME	Eastern Boulevard Bridge Replacement Project	RECEIVED DATE	2017 FEB 16 AM 9:37
---------------------	------------	-------------------	--	---------------	---------------------

PLEASE PRINT INFORMATION LEGIBLY

ACCTG/PURCHASING DEPT.

Firm: <u>Arbore Corporation</u> Person Attending: <u>Tsac Abrake</u> Address: <u>231 Shunpike Rd</u> City/State/Zip <u>Genesee CT 02416</u>	Phone: <u>860-529-7714</u> FAX: <u>860-685-5222</u>	Email Address: (Please print legibly) <u>engr@arborecorp.com</u>
Firm: <u>LAYDON INDUSTRIES</u> Person Attending: <u>STEVE SCALABRO</u> Address: <u>51 LONGHINI LANE</u> City/State/Zip <u>New Haven CT.</u>	Phone: <u>203-562-7283</u> FAX: _____	Email Address: (Please print legibly) <u>SCALABRO@LAYDONINDUSTRIES.COM</u>
Firm: <u>McKern Construction</u> Person Attending: <u>Richard Chung</u> Address: <u>76m Bushnell Hill Rd</u> City/State/Zip <u>Bethel CT 06330</u>	Phone: <u>860 897 1847</u> FAX: _____	Email Address: (Please print legibly) <u>AbbeyJ@McKernConstruction.com</u>
Firm: <u>TradeMark Contractors LLC.</u> Person Attending: <u>Todd Pleurde</u> Address: <u>72 Cold Springs Rd.</u> City/State/Zip <u>Bristol CT 06010</u>	Phone: <u>860 582 3006</u> FAX: <u>860 314 1428</u>	Email Address: (Please print legibly) <u>toddpleurde@58cglobal.net</u>

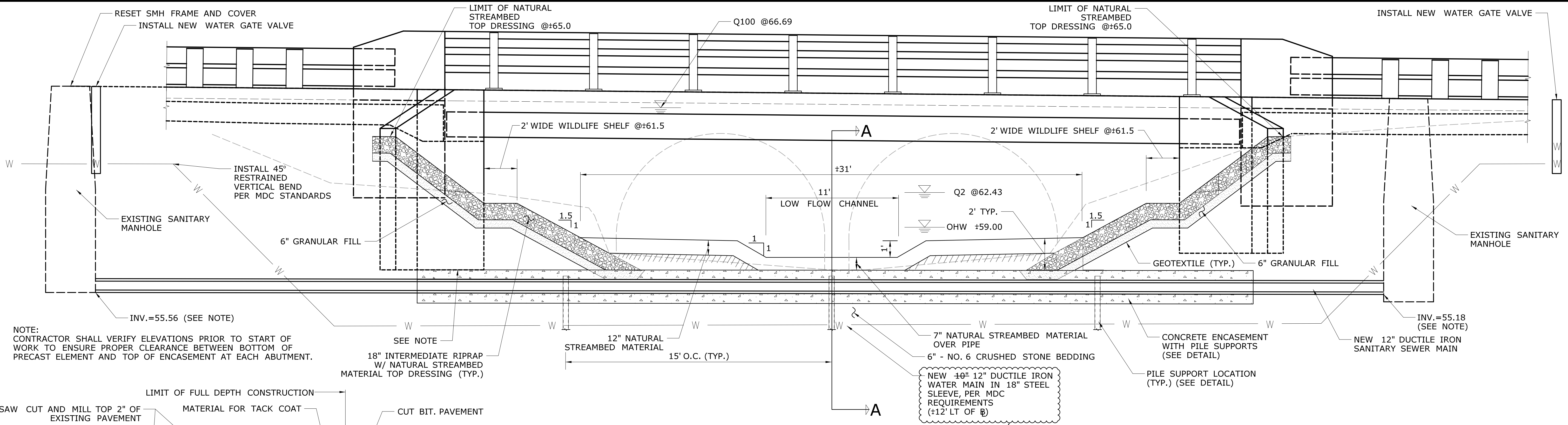
## OPTIONAL PRE-BID MEETING SIGN-IN SHEET

SOLICITATION NUMBER	GL-2017-22	SOLICITATION NAME	Eastern Boulevard Bridge Replacement Project	DATE	02-15-17
---------------------	------------	-------------------	--	------	----------

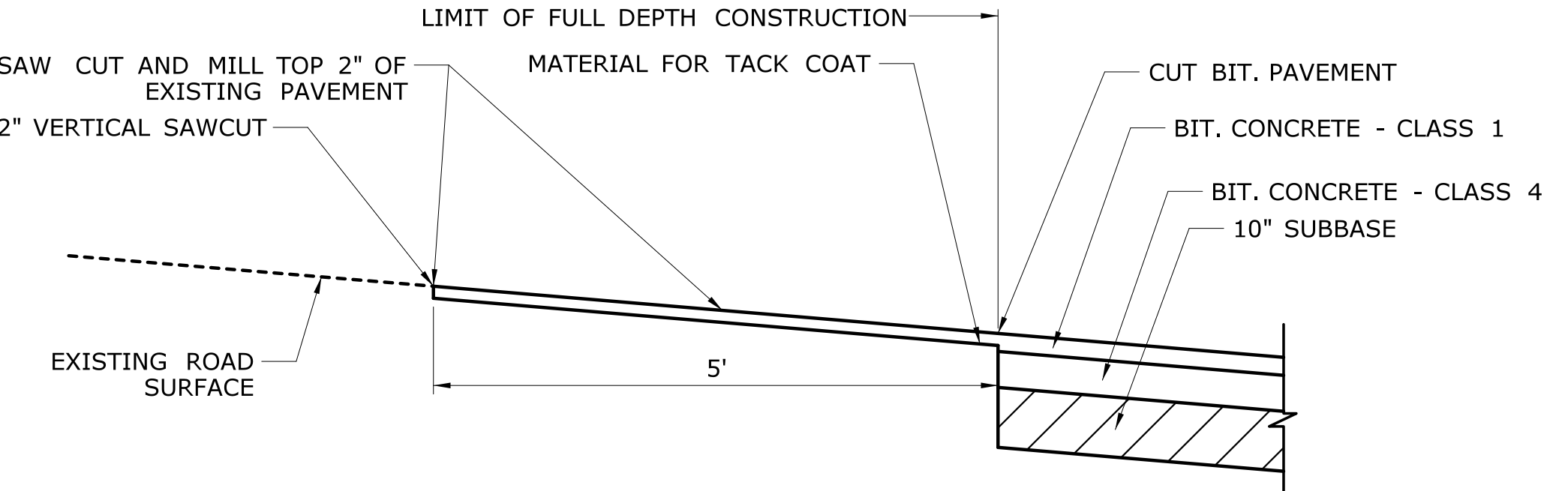
### PLEASE PRINT INFORMATION LEGIBLY

Firm: <u>Henlock Construction Co. Inc.</u> Person Attending: <u>Todd Beaulieu</u> Address: <u>109 Sunrise Drive</u> City/State/Zip: <u>Torrington CT 06790</u>	Phone: <u>860 482-7509</u> FAX: <u>860 482-8000</u>	Email Address: (Please print legibly) <u>henlockconst@gmail.com</u>
Firm: <u>Lakosa Construction Co. Inc.</u> Person Attending: <u>Ashley Amatore</u> Address: <u>1401 North Colony Rd.</u> City/State/Zip: <u>Menden, CT 06450</u>	Phone: <u>203-237-5409</u> #110 FAX: <u>203-235-0611</u>	Email Address: (Please print legibly) <u>lci@lacosacc.com</u>
Firm: <u>Brunell Const. Co.</u> Person Attending: <u>Dennis Miller</u> Address: <u>109 SUMMER ST.</u> City/State/Zip: <u>SOUTHINGTON, CT 06489</u>	Phone: <u>860-628-5587</u> FAX: <u>860-628-9979</u>	Email Address: (Please print legibly) <u>DMILLER@BRUNELLCONSTRUCTION.COM</u>
Firm: <u>Sedoid Pumps</u> Person Attending: <u>Andy Culver</u> Address: <u>99 Staekhouse Road Torrington CT</u> City/State/Zip: _____	Phone: <u>207-255-8322</u> FAX: _____	Email Address: (Please print legibly) <u>Andrew.Culver@KylhemInc.com</u>

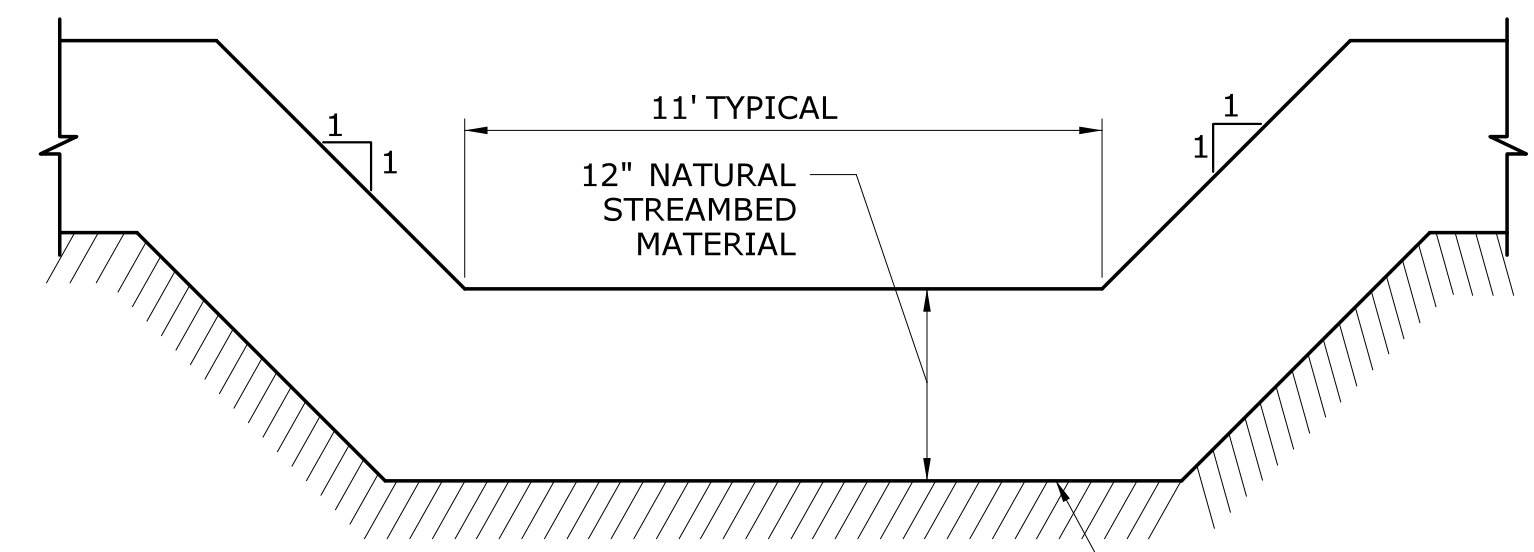




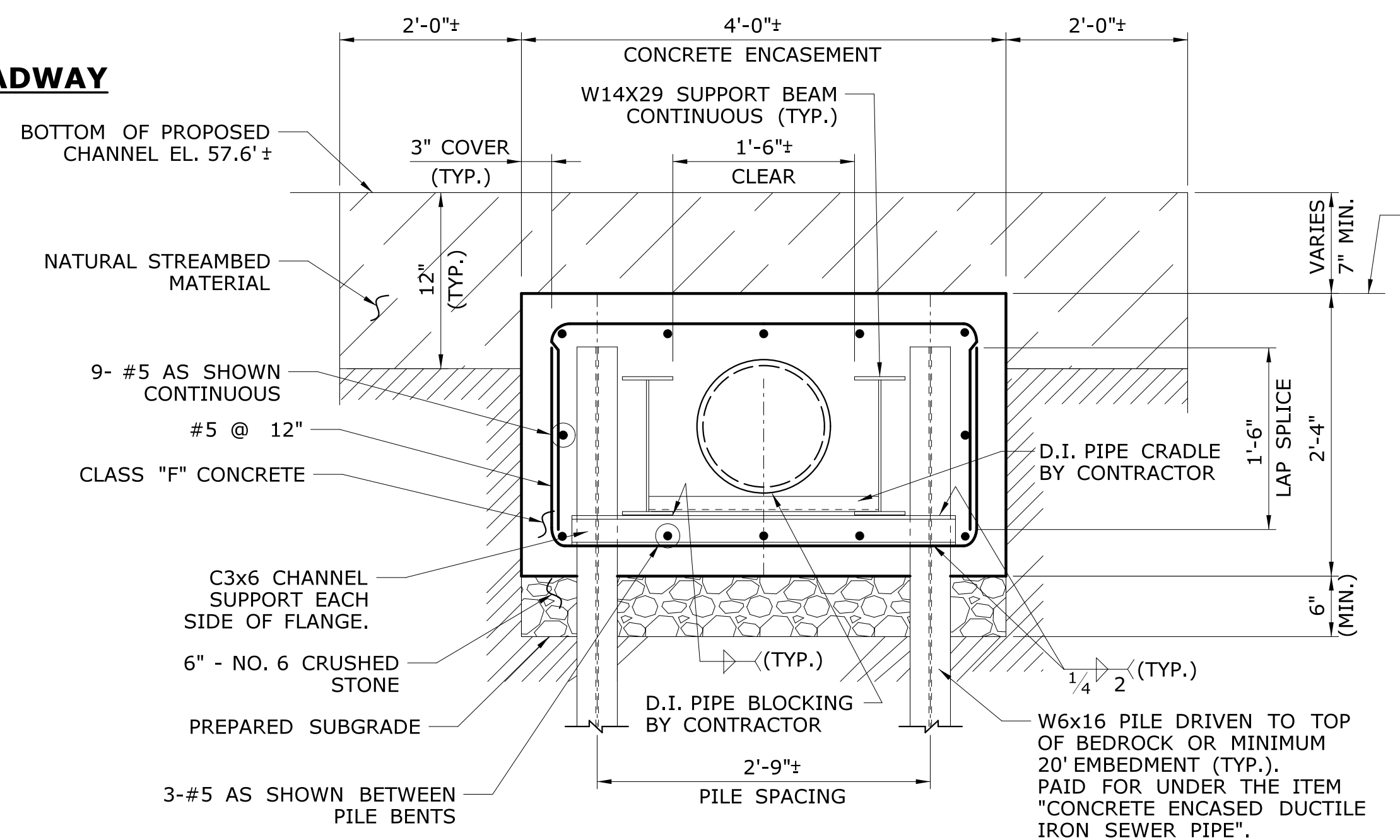
**SECTION OF PROPOSED BRIDGE AND WATERWAY  
AT EASTERN BOULEVARD BASELINE**  
NOT TO SCALE



**LONGITUDINAL SECTION OF APPROACH ROADWAY**  
NOT TO SCALE



**TYPICAL LOW FLOW  
CHANNEL SECTION**  
NOT TO SCALE



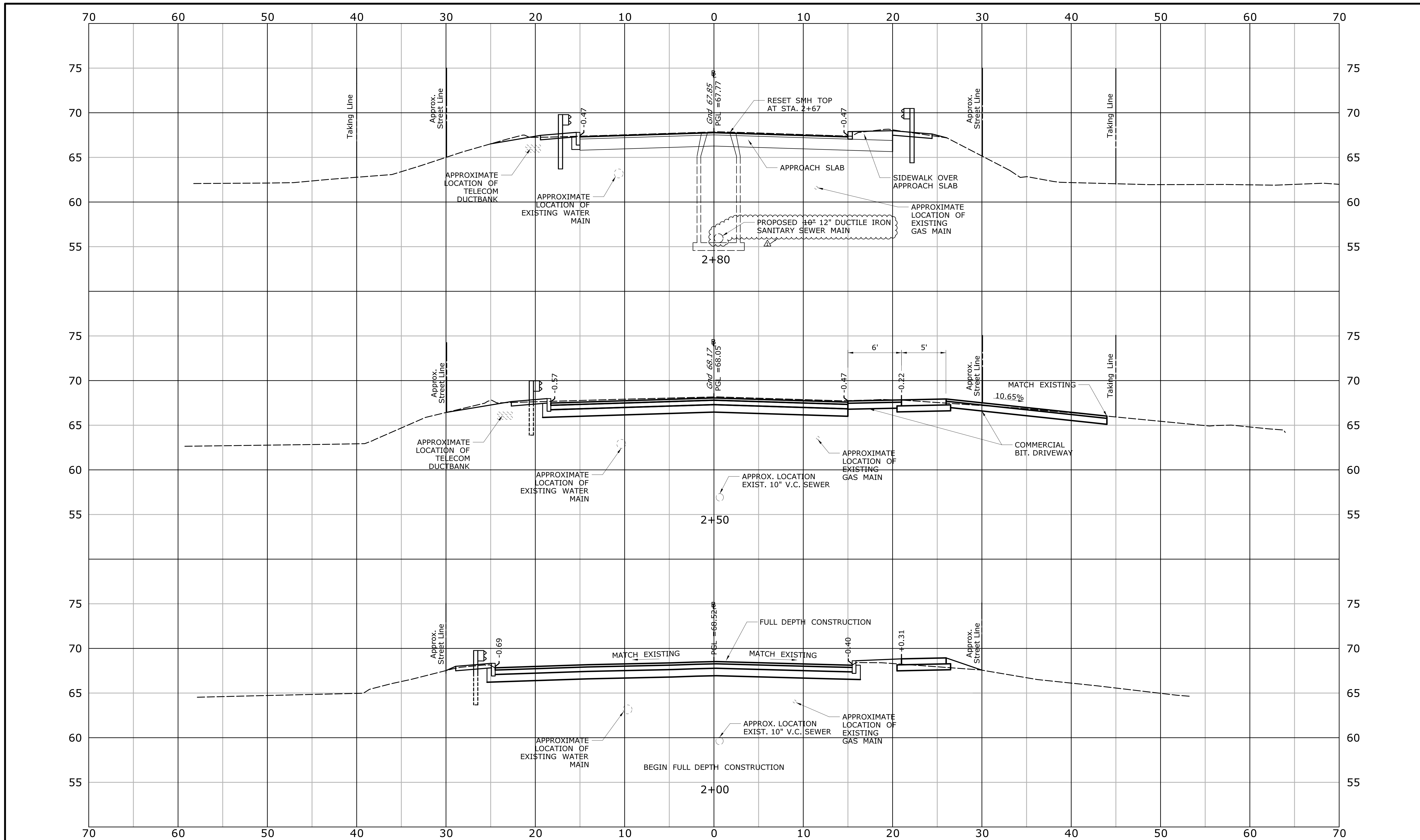
**PROPOSED CONCRETE ENCASED SEWER PIPE DETAIL**  
SECTION A-A  
NOT TO SCALE

- ENCASED SEWER PIPE NOTES:**
1. THE DETAILS DEPICT THE PORTION OF PROPOSED SEWER PIPE UNDER THE WATERWAY TO BE EXTERNALLY SUPPORTED AND ENCASED IN CONCRETE. SEE SPECIAL PROVISION "CONCRETE ENCASED DUCTILE IRON SEWER PIPE".
  2. CONTRACTOR SHALL VERIFY ALL ELEVATIONS AND DIMENSIONS PRIOR TO START OF WORK.
  3. TEMPORARY SUPPORT OF EXCAVATION NECESSARY FOR THE INSTALLATION OF THE PROPOSED SEWER PIPE SHALL BE INCLUDED IN THE ITEM "CONCRETE ENCASED DUCTILE IRON SEWER PIPE."
  4. CONTRACTOR SHALL PROVIDE BLOCKING AND CRADLE, AT HIS DISCRETION, TO SUPPORT THE SEWER PIPE AT THE PROPER ELEVATION UNTIL THE ENCASED CONCRETE HAS CURED. COST OF THIS WORK SHALL BE INCLUDED IN THE ITEM "CONCRETE ENCASED DUCTILE IRON SEWER PIPE."

**ADDENDUM NO. 1**

THE INFORMATION, INCLUDING ESTIMATED QUANTITIES OF WORK, SHOWN ON THESE SHEETS IS BASED ON LIMITED INVESTIGATIONS BY THE STATE AND IS IN NO WAY WARRANTED TO INDICATE THE CONDITIONS OF ACTUAL QUANTITIES OF WORK WHICH WILL BE REQUIRED.		DESIGNER/DRAFTER: <b>YKM</b> CHECKED BY: <b>PB</b> SCALE AS NOTED	<b>TOWN OF GLASTONBURY</b> Filename: ...VHW_MSH_053_188_DET-01_A1.dgn	SIGNATURE/BLOCK:  GM2 ASSOCIATES, INC. 115 GLASTONBURY BLVD. GLASTONBURY, CT 06033	PROJECT TITLE: <b>REPLACEMENT OF BRIDGE NO. 05608 EASTERN BOULEVARD OVER SALMON BROOK</b>	TOWN: <b>GLASTONBURY</b> DRAWING TITLE: <b>DETAIL SHEET - 01</b>	PROJECT NO. <b>0053-0188</b> DRAWING NO. <b>HWY-03</b> SHEET NO. <b>6.A1</b>
REV. DATE REVISION DESCRIPTION SHEET NO.	02/22/17 REVISED PIPE SIZE 6.A1	Plotted Date: 2/22/2017					





**ADDENDUM NO. 1**

REV.	DATE	REVISION DESCRIPTION	SHEET NO.
△	02/22/17	REVISED PIPE SIZE	15.A1

THE INFORMATION, INCLUDING ESTIMATED QUANTITIES OF WORK SHOWN ON THESE SHEETS IS BASED ON LIMITED INVESTIGATIONS BY THE STATE AND IS IN NO WAY WARRANTED TO INDICATE THE CONDITIONS OF ACTUAL QUANTITIES OF WORK WHICH WILL BE REQUIRED.

Plotted Date: 2/22/2017

DESIGNER/DRAFTER:  
**YKM**

CHECKED BY:  
**PB**

SCALE IN FEET

0 5 10

SCALE 1" = 5'

**TOWN OF GLASTONBURY**

Filename: ...HW\_MSH\_053-188\_XSC-01.A1.dgn

SIGNATURE/  
BLOCK:

GM2 ASSOCIATES, INC.  
115 GLASTONBURY BLVD.  
GLASTONBURY, CT 06033

PROJECT TITLE:  
**REPLACEMENT OF BRIDGE NO. 05608  
EASTERN BOULEVARD  
OVER SALMON BROOK**

TOWN:  
**GLASTONBURY**

DRAWING TITLE:  
**CROSS SECTION - 01**

PROJECT NO.  
**0053-0188**

DRAWING NO.  
**HWY-12**

SHEET NO.  
**15.A1**