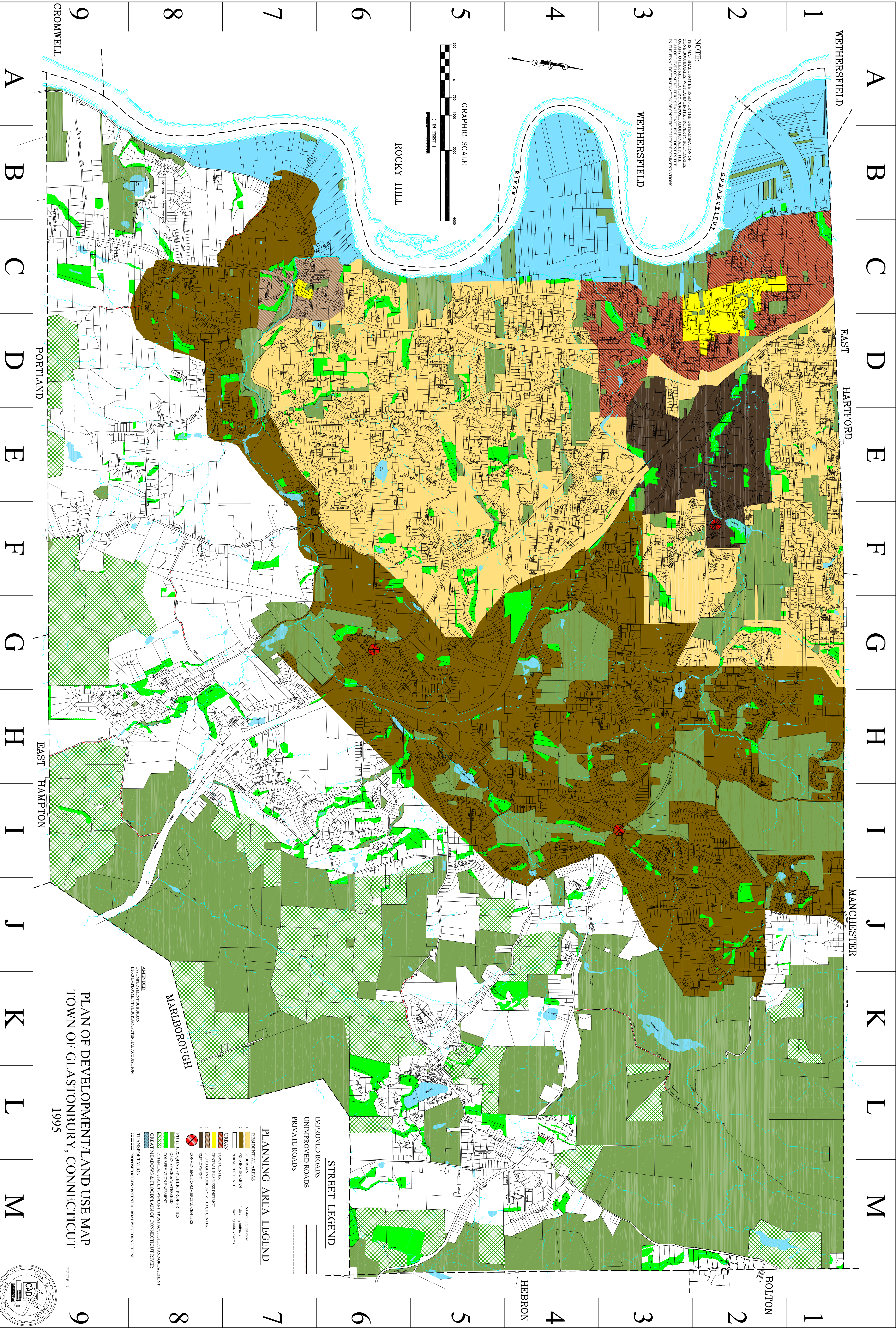
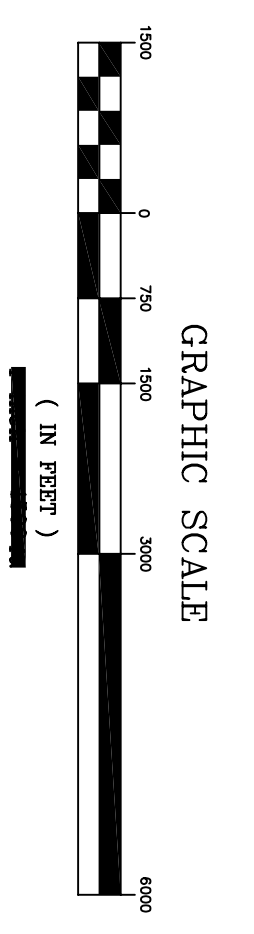


NOTE:
THIS MAP SHALL NOT BE USED FOR THE DETERMINATION OF ZONE BOUNDARIES, WITH AND WITHOUT PROPERTY BOUNDARIES, OR ANY OTHER REGULATORY PURPOSE. ADDITIONALLY, THE INFORMATION SHOWN ON THIS MAP IS NOT TO BE USED IN THE FINAL DETERMINATION OF SPECIFIC POLICY RECOMMENDATIONS.



WETHERSFIELD
EAST HARTFORD
MANCHESTER
BOLTON
HEBRON

9
8
7
6
5
4
3
2
1
A
B
C
D
E
F
G
H
I
J
K
L
M
CROMWELL
PORTLAND
EAST HAMPTON
MARRBOROUGH

STREET LEGEND
IMPROVED ROADS
UNIMPROVED ROADS
PRIVATE ROADS

PLANNING AREA LEGEND

RESIDENTIAL AREAS

- 1 SUBURBAN 2.5+ dwelling units/acre
- 2 SINGLE SUBURBAN 1 dwelling unit/acre
- 3 PERMANENT RESIDENCE 1 dwelling unit/2 acres
- 4 URBAN 200+ dwelling units/acre
- 5 CENTRAL BUSINESS DISTRICT
- 6 EMPLOYMENT

PUBLIC & QUASIPUBLIC PROPERTIES

- GREEN SPACE & WATERSHED
- CONSERVATION EASEMENT
- POTENTIAL STATION AND FERRY ACQUISITION AND/OR EASEMENT
- GREEN MEADOWS & FLOODPLAIN OF CONNECTICUT RIVER

TRANSPORTATION

- AIRPORTS
- POTENTIAL BOUNDARY CONNECTIONS

AMENDED
12081 STATE ST. SHERBURN, VIOLENCE ACQUISITION

**PLAN OF DEVELOPMENT/LAND USE MAP
TOWN OF GLASTONBURY, CONNECTICUT
1995**

