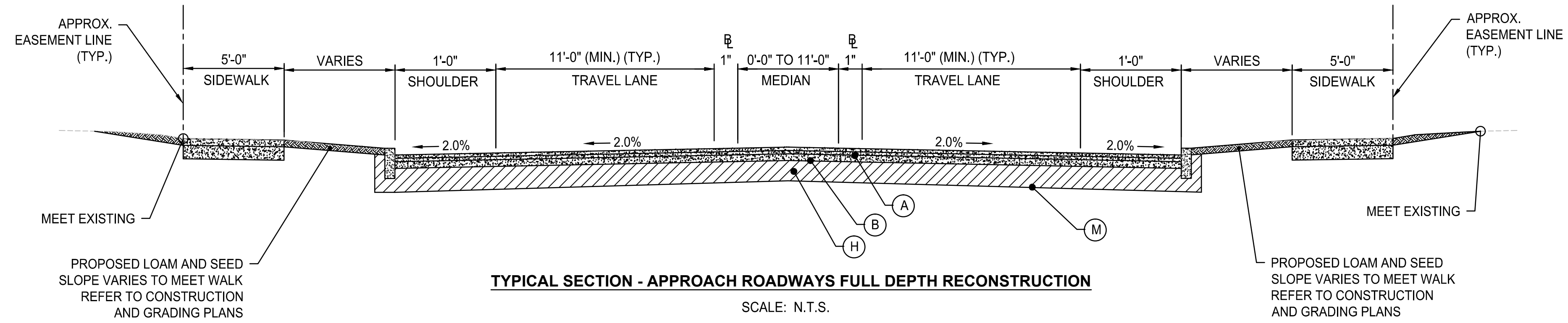
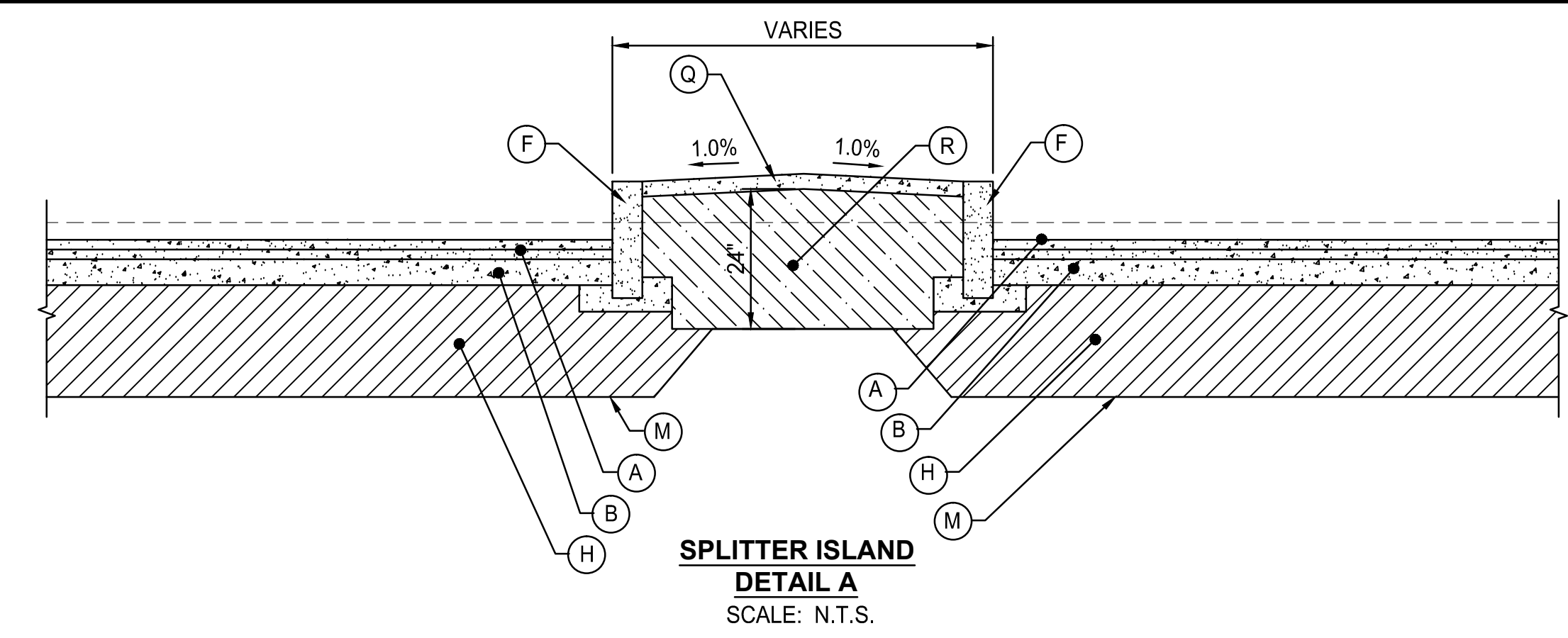


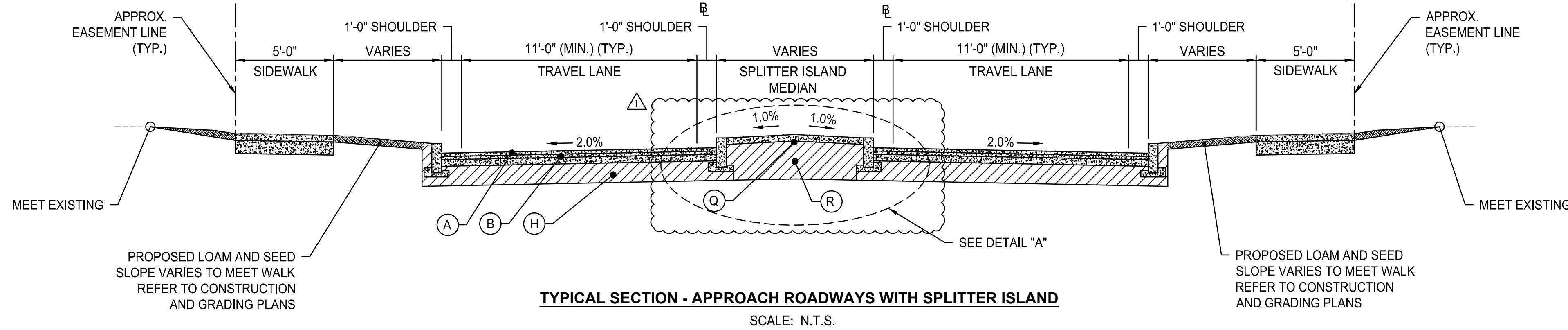
© 2012 CDM SMITH ALL RIGHTS RESERVED. THESE DOCUMENTS AND DESIGNS PROVIDED BY PROFESSIONAL SERVICE, INCORPORATED HEREIN, ARE THE PROPERTY OF CDM SMITH AND ARE NOT TO BE USED, IN WHOLE OR PART, FOR ANY OTHER PROJECT WITHOUT THE WRITTEN AUTHORIZATION OF CDM SMITH.



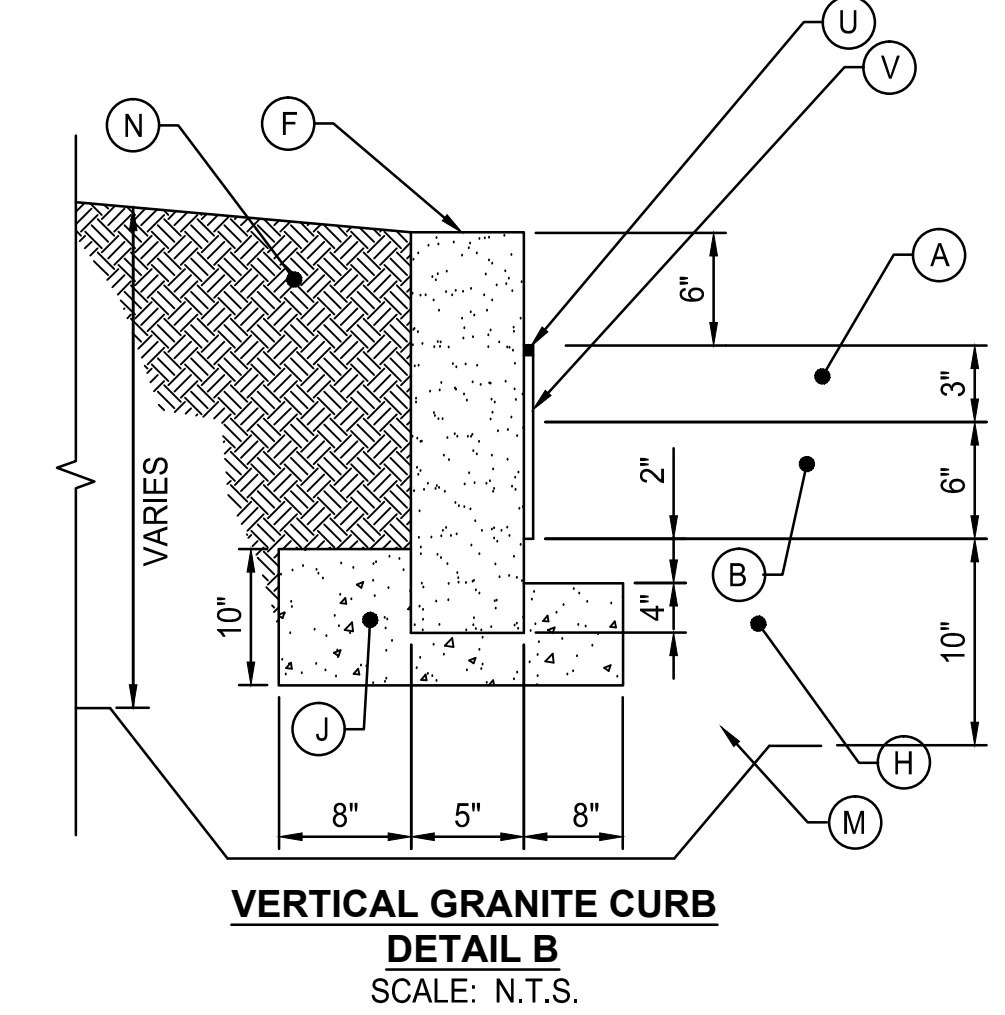
TYPICAL SECTION - APPROACH ROADWAYS FULL DEPTH RECONSTRUCTION
SCALE: N.T.S.



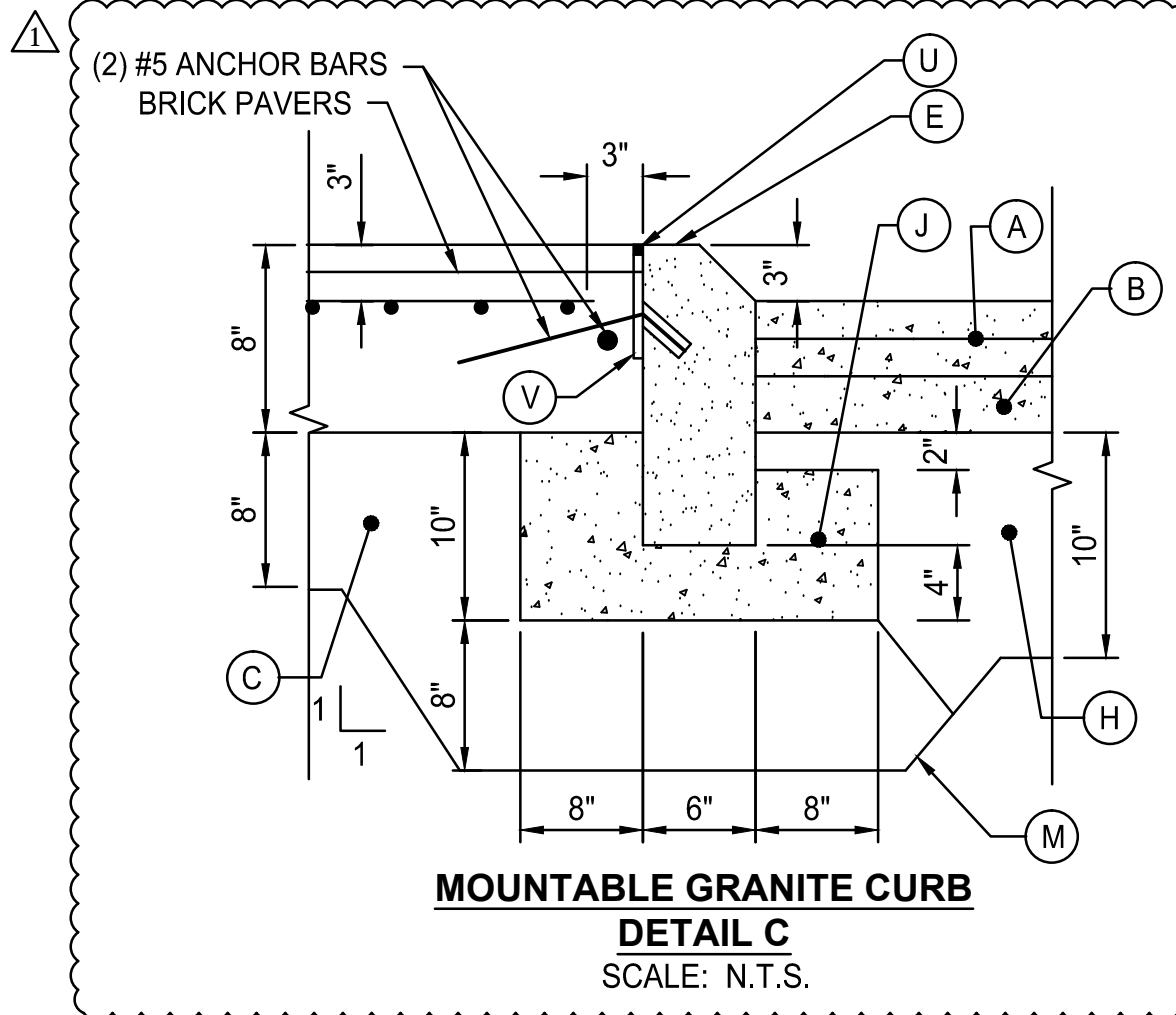
SPLITTER ISLAND DETAIL A
SCALE: N.T.S.



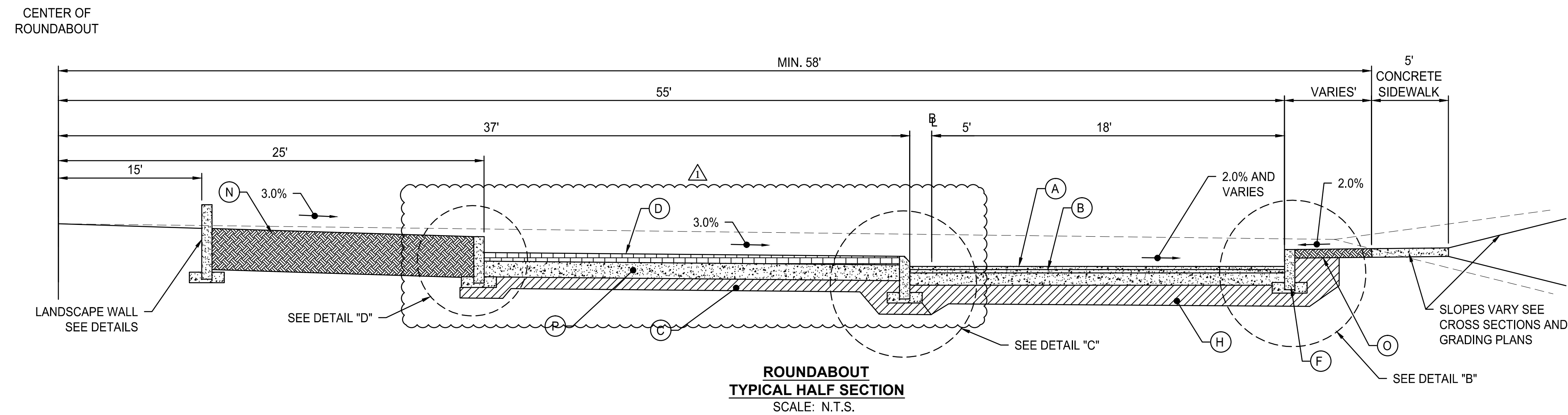
TYPICAL SECTION - APPROACH ROADWAYS WITH SPLITTER ISLAND
SCALE: N.T.S.



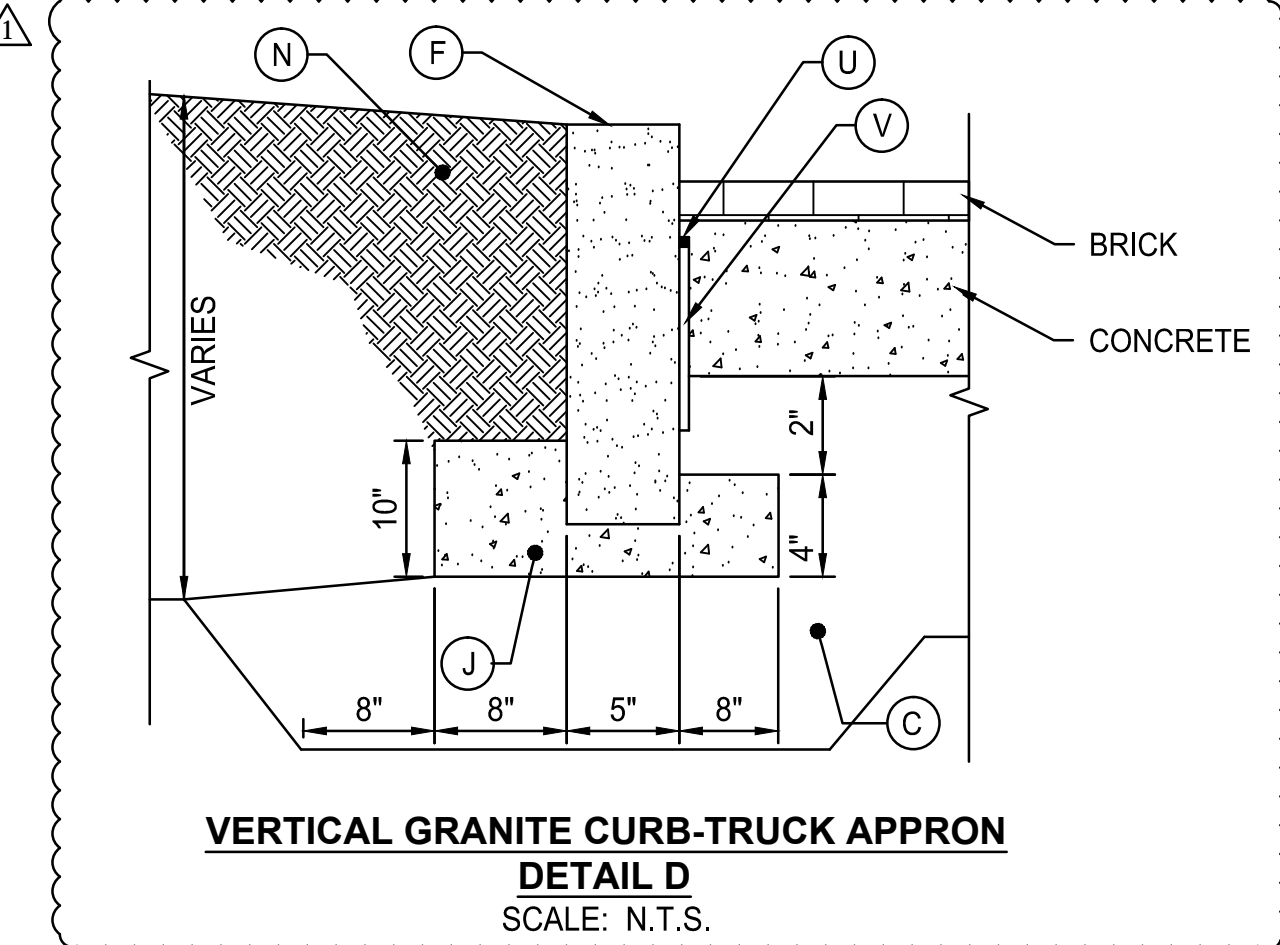
VERTICAL GRANITE CURB DETAIL B
SCALE: N.T.S.



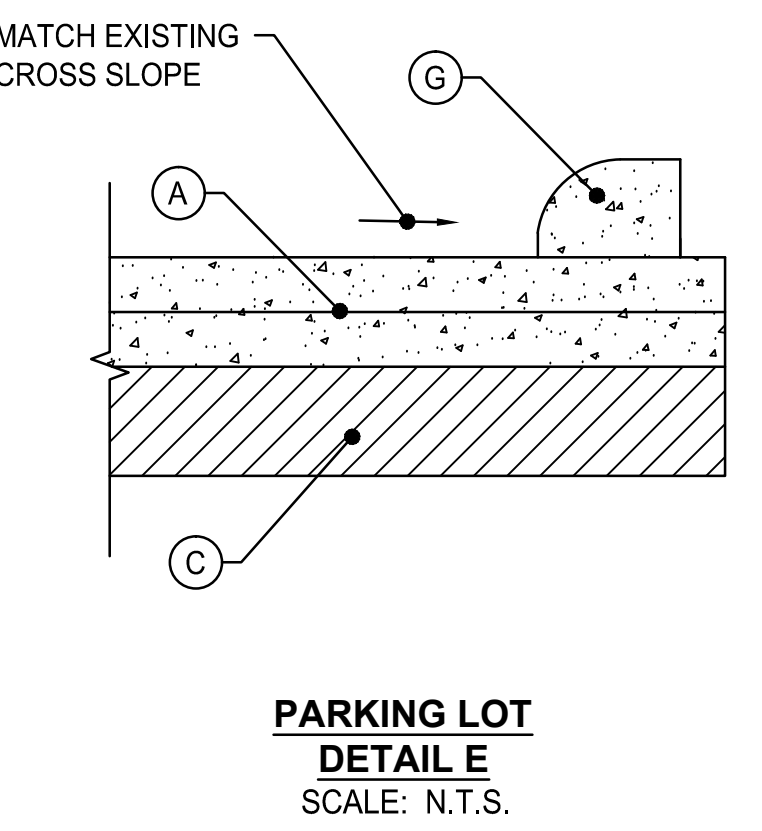
MOUNTABLE GRANITE CURB DETAIL C
SCALE: N.T.S.



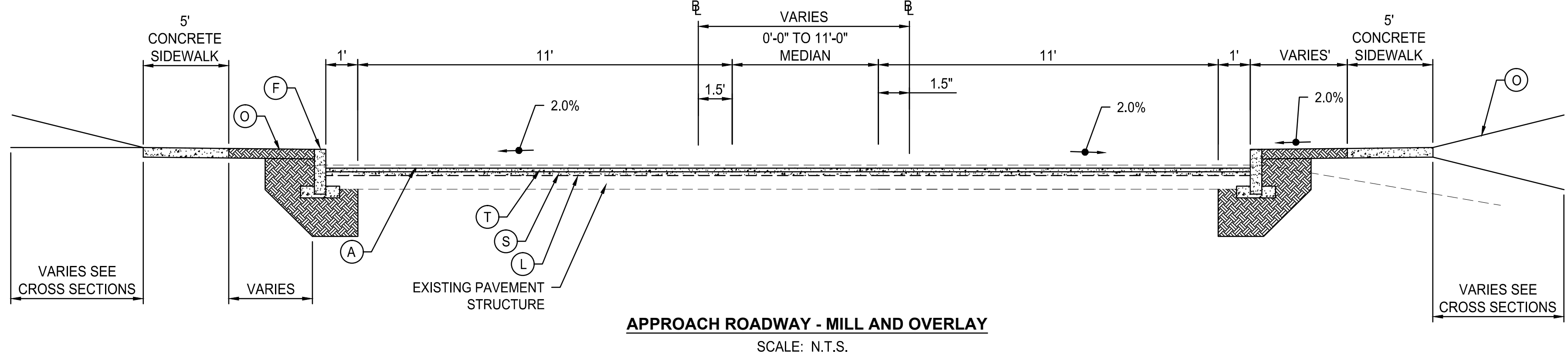
ROUNDBOULT TYPICAL HALF SECTION
SCALE: N.T.S.



VERTICAL GRANITE CURB-TRUCK APRON DETAIL D
SCALE: N.T.S.



PARKING LOT DETAIL E
SCALE: N.T.S.



APPROACH ROADWAY - MILL AND OVERLAY
SCALE: N.T.S.

TYPICAL SECTION LEGEND:

- | | |
|--|---|
| (A) 3" CLASS 1 (TWO LIFTS) (BITUMINOUS CONCRETE) | (K) SAWCUT EXISTING PAVEMENT |
| (B) 6" CLASS 4 (BITUMINOUS CONCRETE) | (L) REMOVE EXISTING PAVEMENT (MILL) |
| (C) 8" PROCESSED STONE BASE* | (M) FORMATION OF SUBGRADE |
| (D) BRICK PAVERS (SEE LANDSCAPE DETAILS) | (N) LANDSCAPING |
| (E) MOUNTABLE GRANITE CURB | (O) 4" LOAM AND TURF ESTABLISHMENT |
| (F) GRANITE CURBING | (P) CONCRETE BASE 8" |
| (G) EXTRUDED BITUMINOUS CONCRETE CURBING | (Q) GRANITE PAVERS |
| (H) 10" SUBBASE* (BASE) | (R) 24" DEPTH STRUCTURAL SOIL (SEE LANDSCAPE DETAILS) |
| (I) CONCRETE SIDEWALK | (S) 1.5" CLASS 2 (SHIM COURSE) |
| (J) CONCRETE FOOTING (FOR CURB) | (T) 1.5" CLASS 1 (TOP COURSE) |
| | (U) JOINT SEALANT |
| | (V) 1/2" PRE-MOLDED EXPANSION JOINT MATERIAL |

***NOTE:**

RECLAIMED MISCELLANEOUS AGGREGATE SHALL NOT BE USED. SEE SPECIAL PROVISIONS.

REV. NO.	DATE	DRWN	CHKD	REMARKS
1	07/16	D.G.	J.B.	REVISED PER ADDENDUM #1

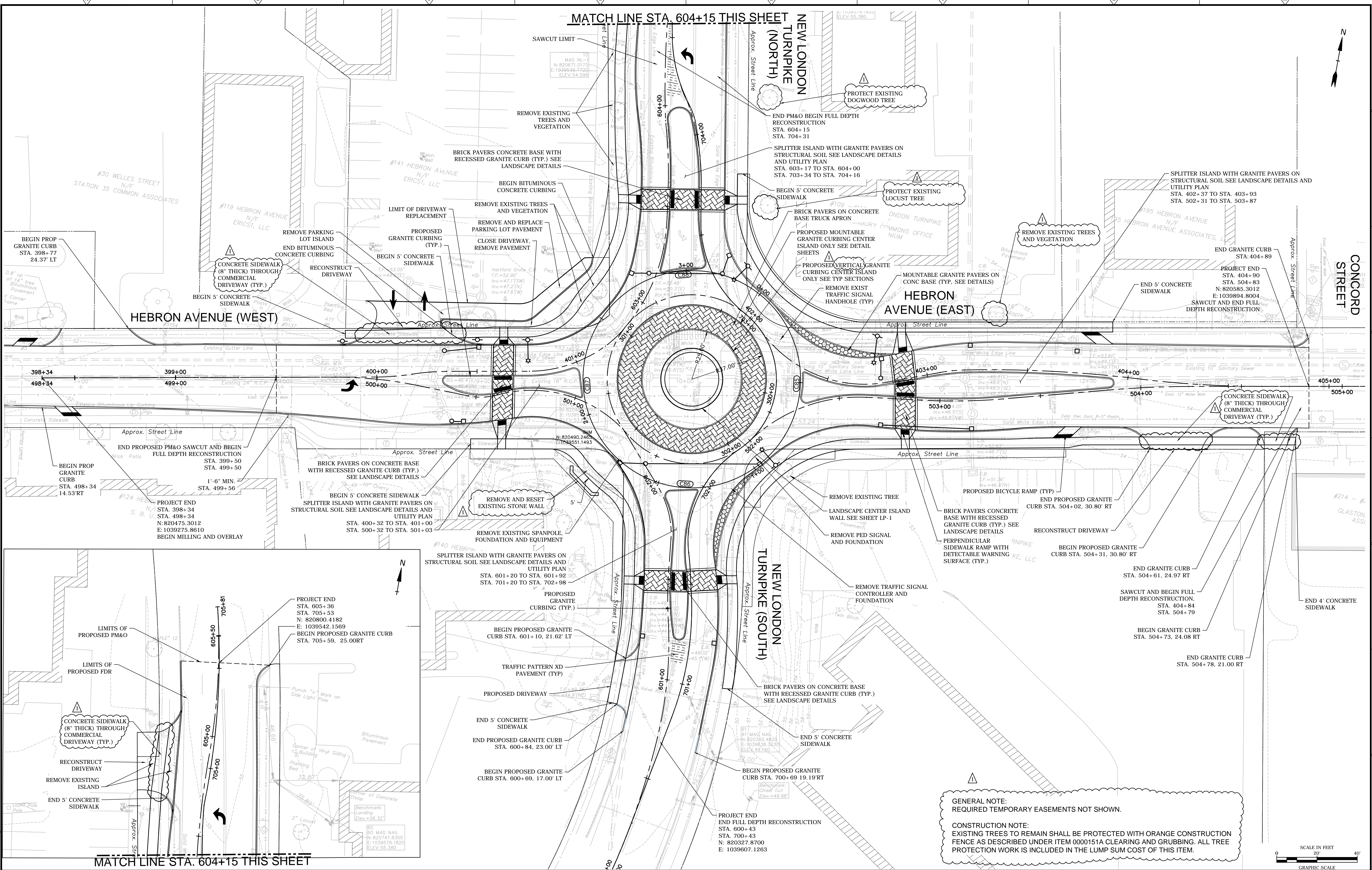
DESIGNED BY: J. BALSUKUS
 DRAWN BY: J. CABRERA
 SHEET CHK'D BY: J. BALSUKUS
 CROSS CHK'D BY: J. BALSUKUS
 APPROVED BY: J. BALSUKUS
 DATE: JULY 2016



TOWN OF GLASTONBURY, CONNECTICUT
 INTERSECTION IMPROVEMENT
 HEBRON AVENUE ROUNDABOUTS:
 NEW LONDON TURNPIKE

PROJECT NO. C1108
 FILE NAME: TS1TS001.dwg
 SHEET NO. TS-1-1

© 2012 CDM SMITH ALL RIGHTS RESERVED. THESE DOCUMENTS AND DESIGNS PROVIDED BY PROFESSIONAL SERVICE, INCORPORATED HEREIN, ARE THE PROPERTY OF CDM SMITH AND ARE NOT TO BE USED, IN WHOLE OR PART, FOR ANY OTHER PROJECT WITHOUT THE WRITTEN AUTHORIZATION OF CDM SMITH.



MATCH LINE STA. 604+15 THIS SHEET

REV. NO.	DATE	DRWN	CHKD	REMARKS
1	07/16	J.C.	D.G.	REVISED PER ADDENDUM NO. 1

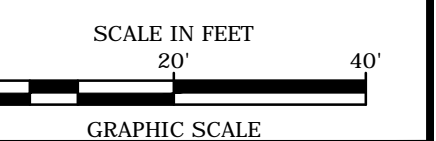
DESIGNED BY: Z. HELLYAR
 DRAWN BY: J. CABRERA
 SHEET CHK'D BY: J. BALSUKUS
 CROSS CHK'D BY: J. BALSUKUS
 APPROVED BY: J. BALSUKUS
 DATE: JULY 2016

CDM Smith

111 Founders Plaza, Suite 1600
 East Hartford, CT 06108
 Tel: (860) 529-7615

TOWN OF GLASTONBURY, CONNECTICUT
 INTERSECTION IMPROVEMENT
**HEBRON AVENUE ROUNDABOUTS:
 NEW LONDON TURNPIKE**

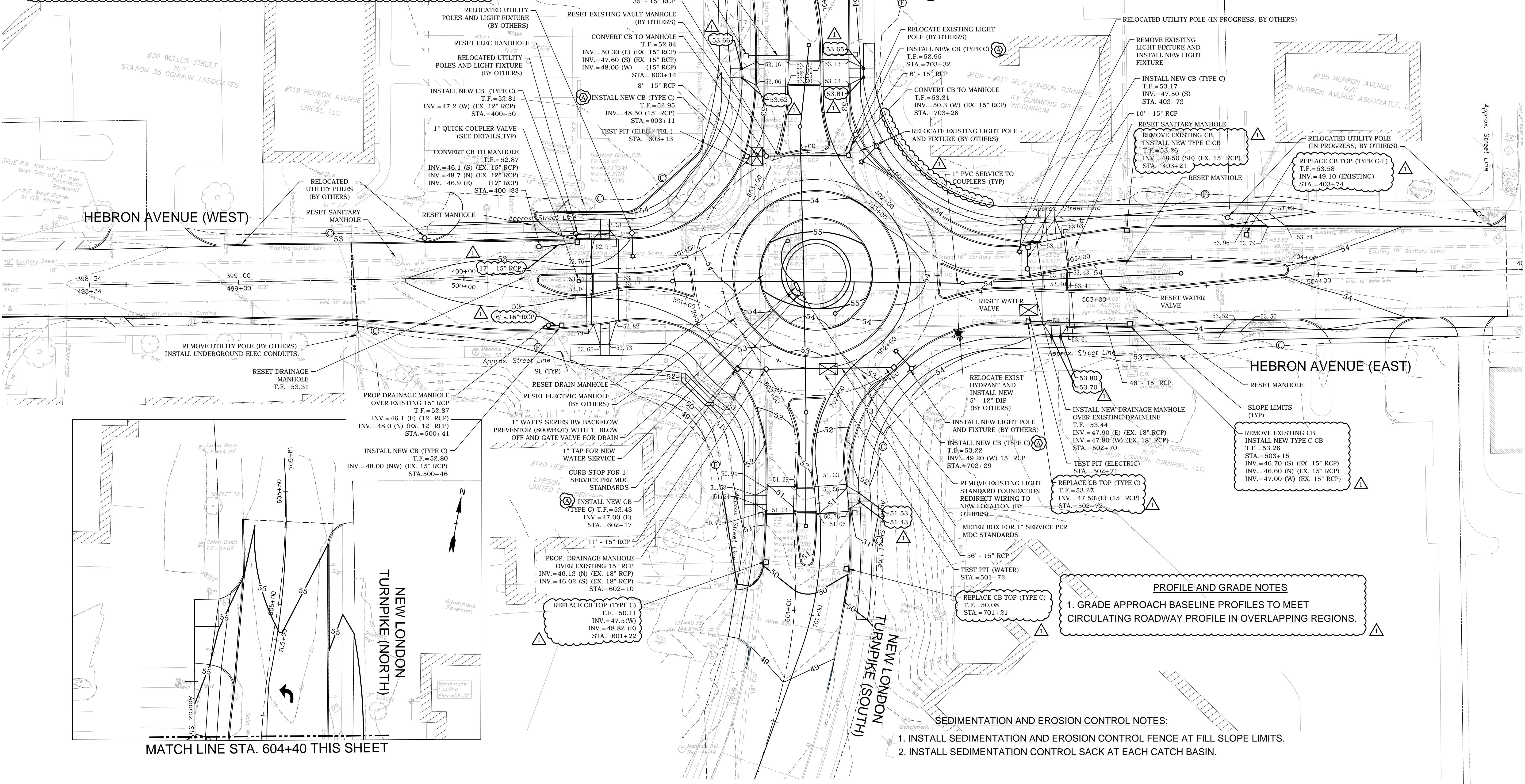
CONSTRUCTION PLAN
 PROJECT NO. C1108
 FILE NAME: TSTCP001.dwg
 SHEET NO.
PLN-1-1



CONSTRUCTION NOTES:

(A) CATCH BASIN TOPS WITHIN THE CIRCULATORY ROADWAY SHALL BE SET TO BINDER GRADE DURING STAGE CONSTRUCTION TO ALLOW FOR PROPER STORM WATER RUNOFF DURING THE CONSTRUCTION PERIOD.

1. CATCH BASIN TOPS SHALL BE RESET TO FINISHED GRADE PRIOR TO INSTALLATION OF THE TOP COURSE OF PAVING. THIS WORK SHALL BE PAID FOR UNDER ITEM #0507771 - RESET CATCH BASIN, WHICH SHALL INCLUDE ALL EXCAVATION, BACKFILL, AND PAVEMENT REPAIR ASSOCIATED WITH RESETTING THE CATCH BASIN TOP.



REV. NO.	DATE	DRWN	CHKD	REMARKS
1	07/16	SPM	JB	ADDENDUM #1 REVISIONS TO GRADES, PIPES AND CATCH BASINS

DESIGNED BY: Z. HELLYAR
 DRAWN BY: J. CABRERA
 SHEET CHK'D BY: J. BALSUKUS
 CROSS CHK'D BY: J. BALSUKUS
 APPROVED BY: J. BALSUKUS
 DATE: JULY 2016

CDM Smith
 111 Founders Plaza, Suite 1600
 East Hartford, CT 06108
 Tel: (860) 529-7615

TOWN OF GLASTONBURY, CONNECTICUT
 INTERSECTION IMPROVEMENT
 HEBRON AVENUE ROUNDABOUTS:
 NEW LONDON TURNPIKE

SCALE IN FEET
 0 20 40

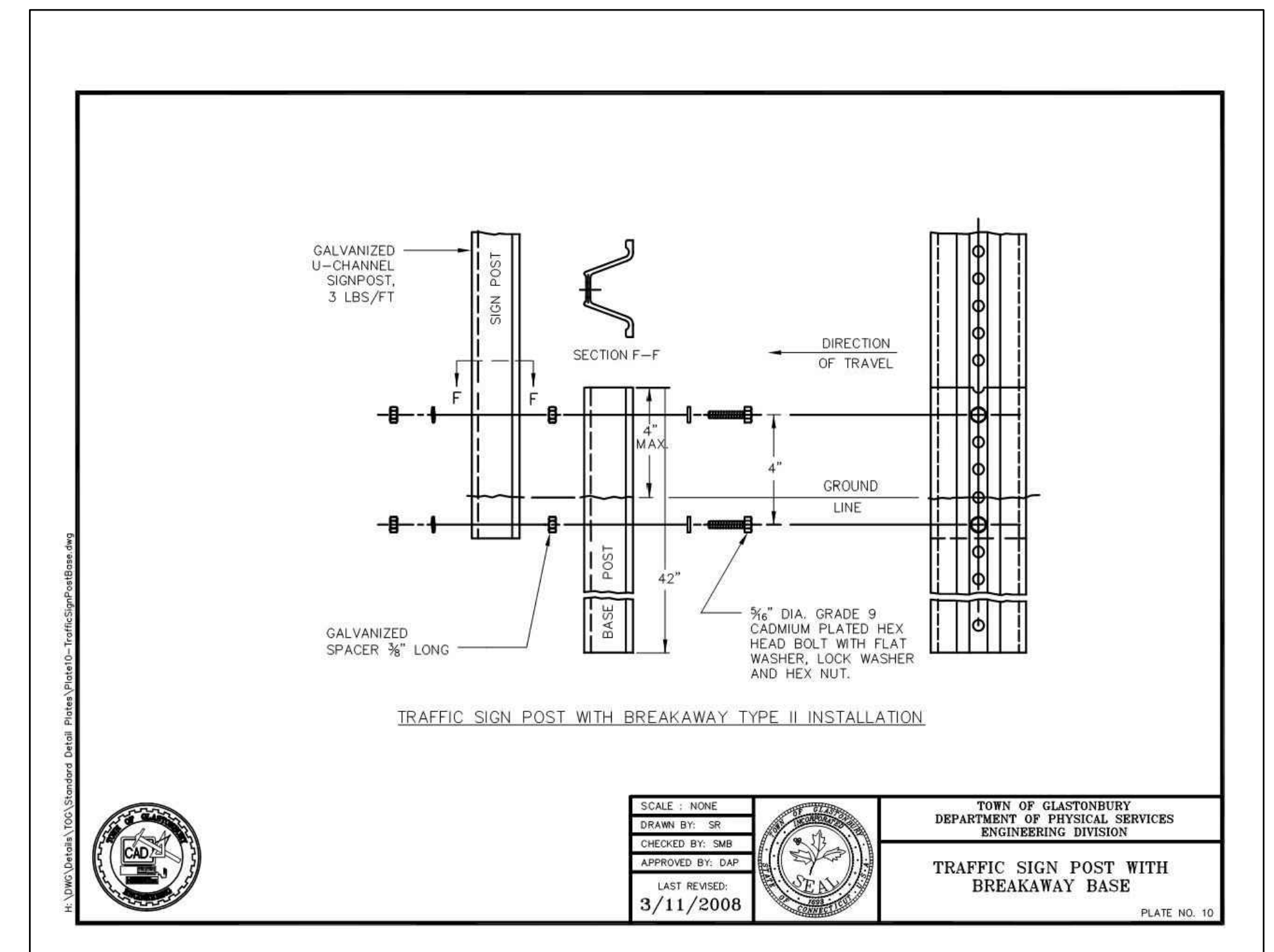
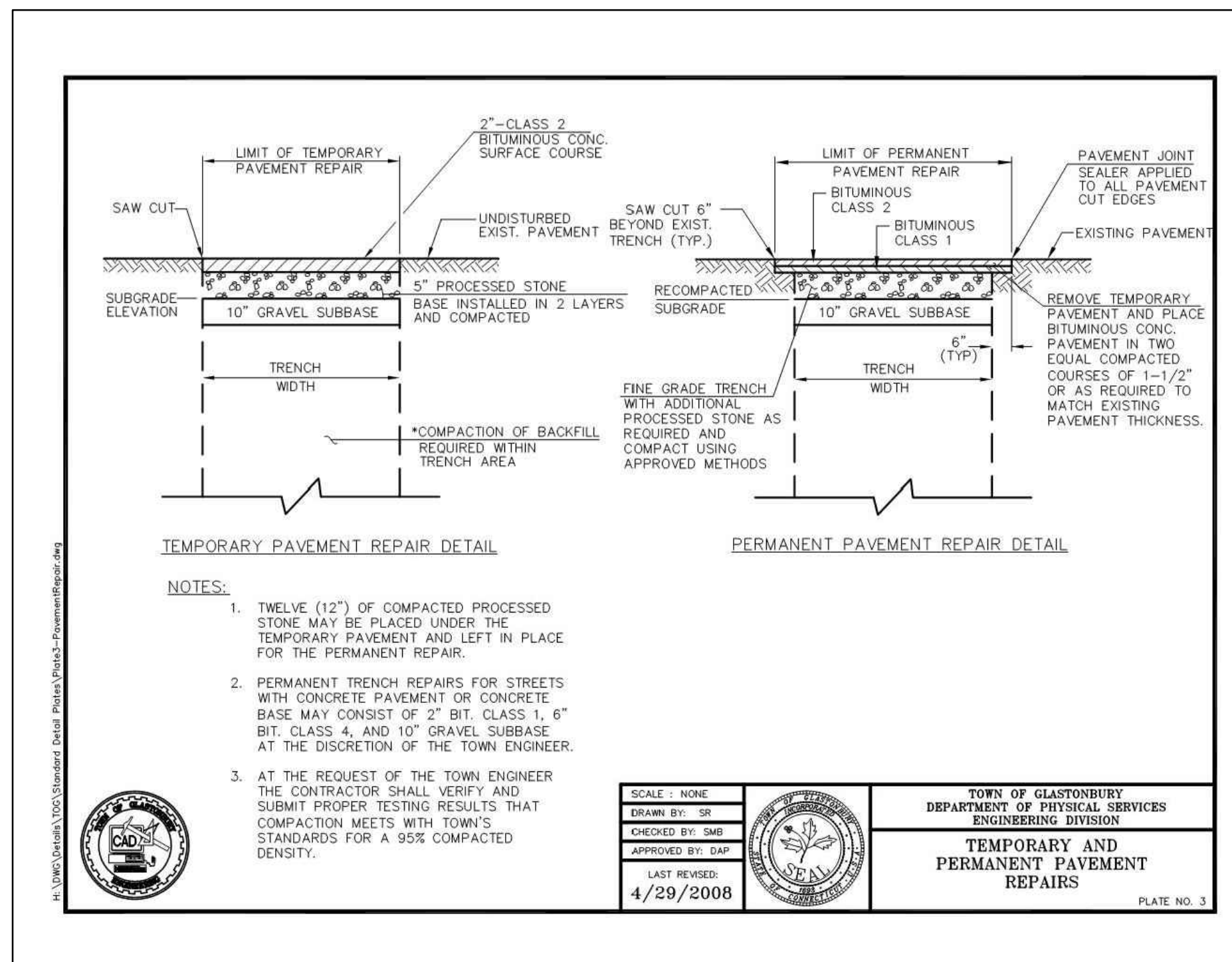
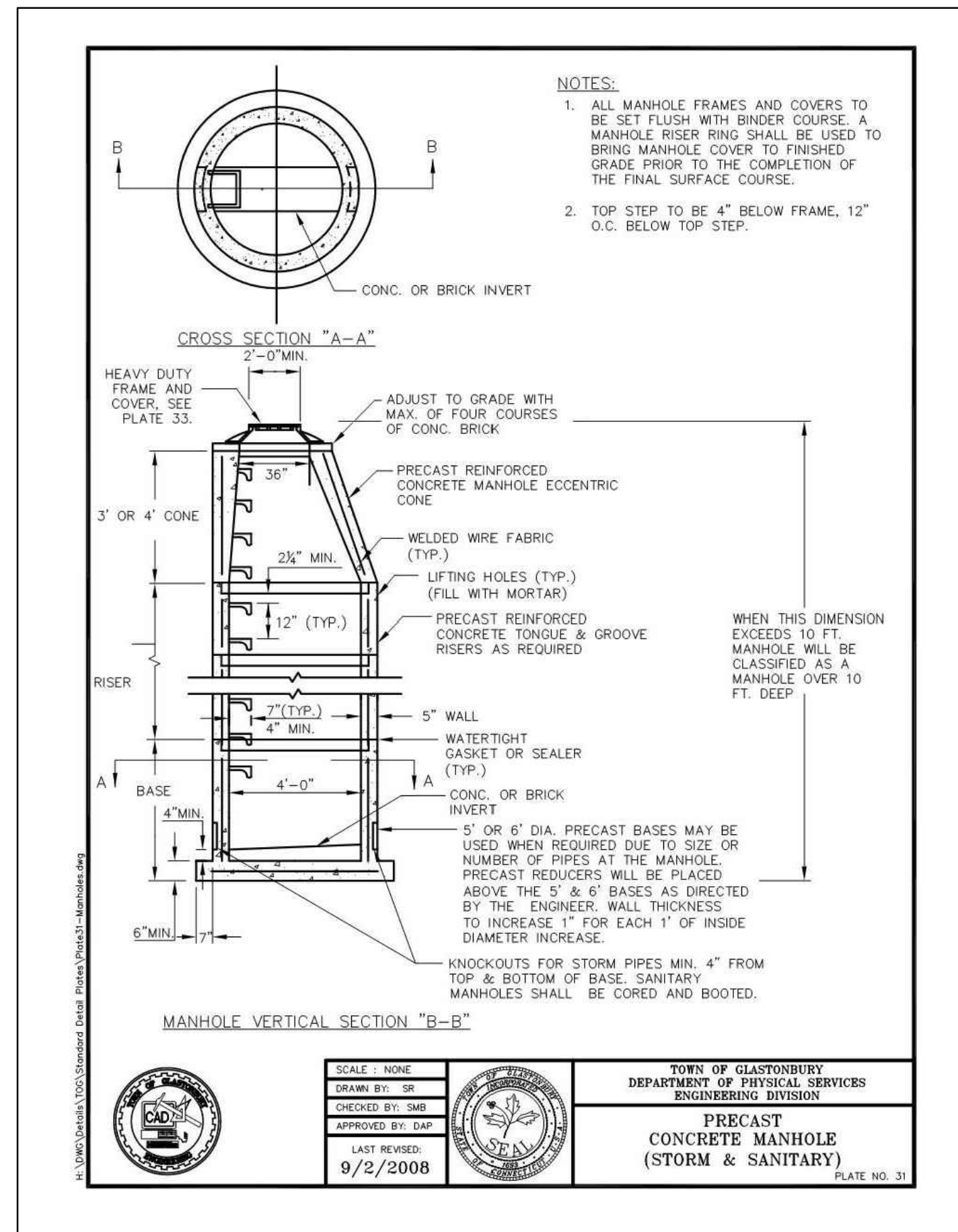
GRAPHIC SCALE

PROJECT NO. C1108
 FILE NAME: TSTGP001.dwg
 SHEET NO. UTI-1-1

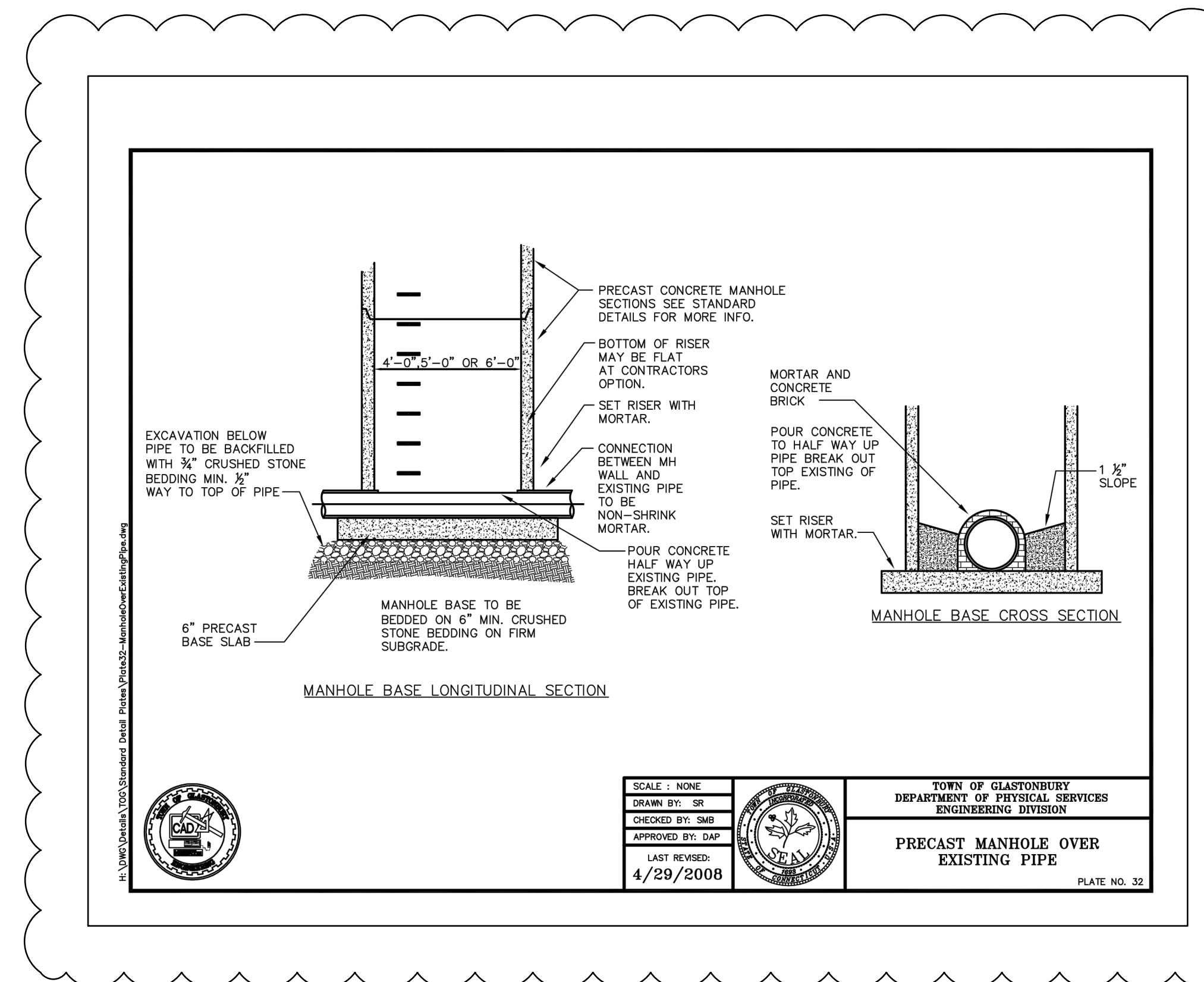
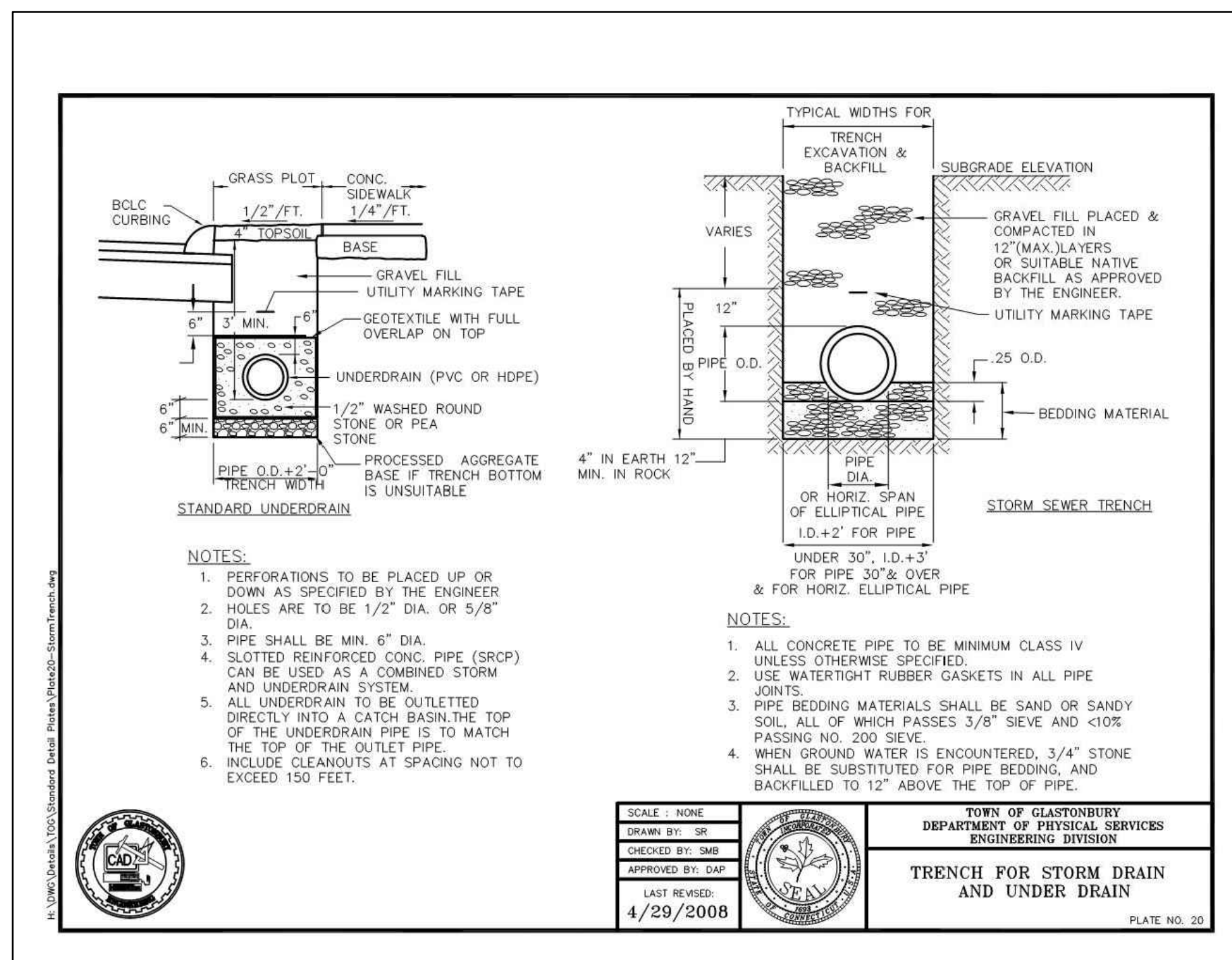
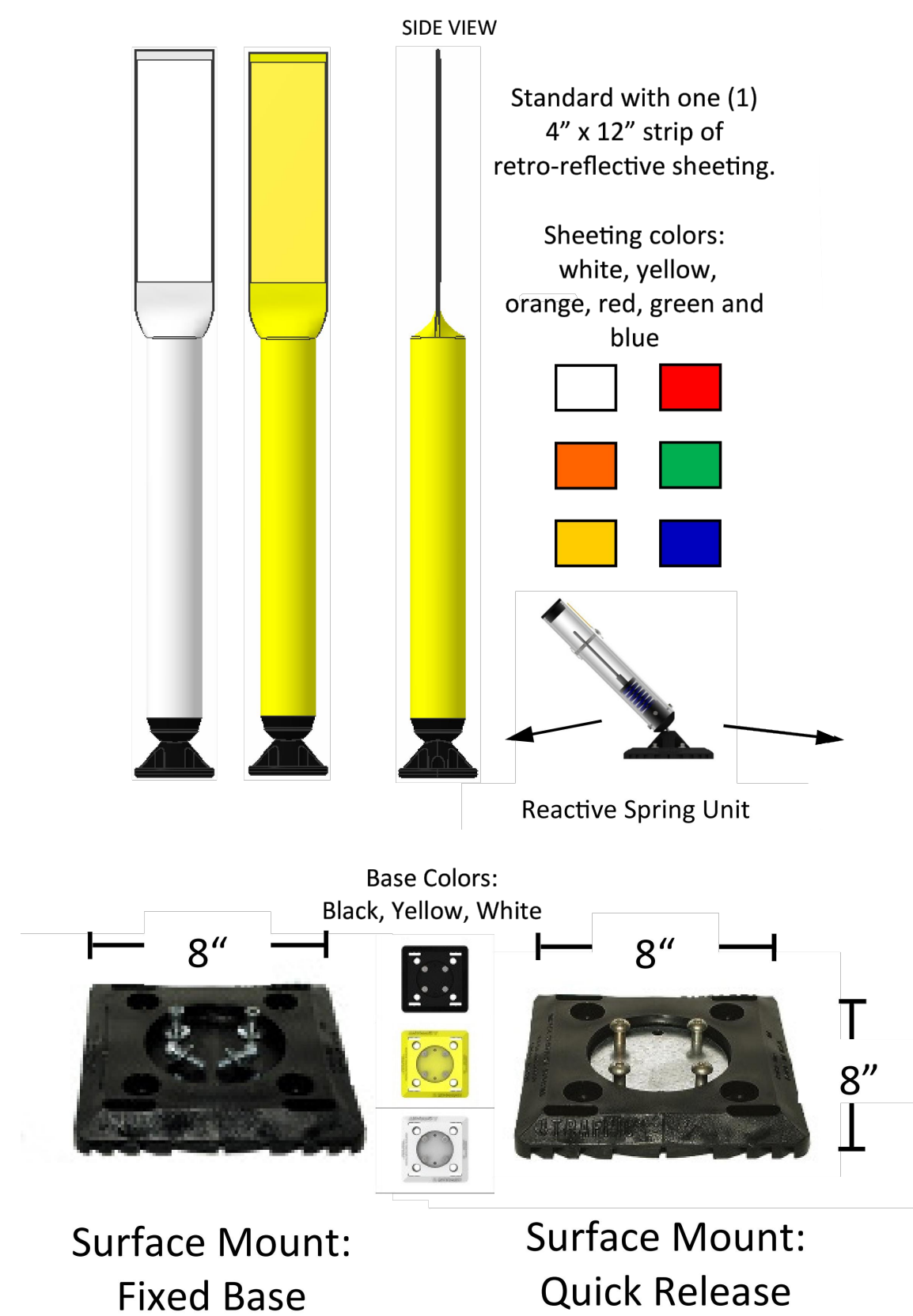
GRADING & UTILITY PLAN

© 2012 CDM SMITH ALL RIGHTS RESERVED. THESE DOCUMENTS AND DESIGNS PROVIDED BY PROFESSIONAL SERVICE, INCORPORATED HEREIN, ARE THE PROPERTY OF CDM SMITH AND ARE NOT TO BE USED, IN WHOLE OR PART, FOR ANY OTHER PROJECT WITHOUT THE WRITTEN AUTHORIZATION OF CDM SMITH.

© 2012 CDM SMITH. ALL RIGHTS RESERVED. USE OF ANY PARTS OR ELEMENTS AND DESIGNS PROVIDED BY PROFESSIONAL SERVICE, INCORPORATED HEREIN, ARE THE PROPERTY OF CDM SMITH AND ARE NOT TO BE USED, IN WHOLE OR PART, FOR ANY OTHER PROJECT WITHOUT THE WRITTEN AUTHORIZATION OF CDM SMITH.



DELINEATOR STYLE



1	07/16	J.C.	D.G.	REVISED PER ADDENDUM NO. 1
REV. NO.	DATE	DRWN	CHKD	REMARKS

DESIGNED BY:	J. BALSUKUS
DRAWN BY:	J. CABRERA
SHEET CHK'D BY:	J. BALSUKUS
CROSS CHK'D BY:	J. BALSUKUS
APPROVED BY:	J. BALSUKUS
DATE:	JULY 2016

CDM Smith
111 Founders Plaza, Suite 1600
East Hartford, CT 06108
Tel: (860) 529-7615

TOWN OF GLASTONBURY, CONNECTICUT
INTERSECTION IMPROVEMENT
HEBRON AVENUE ROUNDABOUTS:
NEW LONDON TURNPIKE

CONSTRUCTION DETAILS II

PROJECT NO. C1108
FILE NAME: TSTCD002.dwg
SHEET NO.

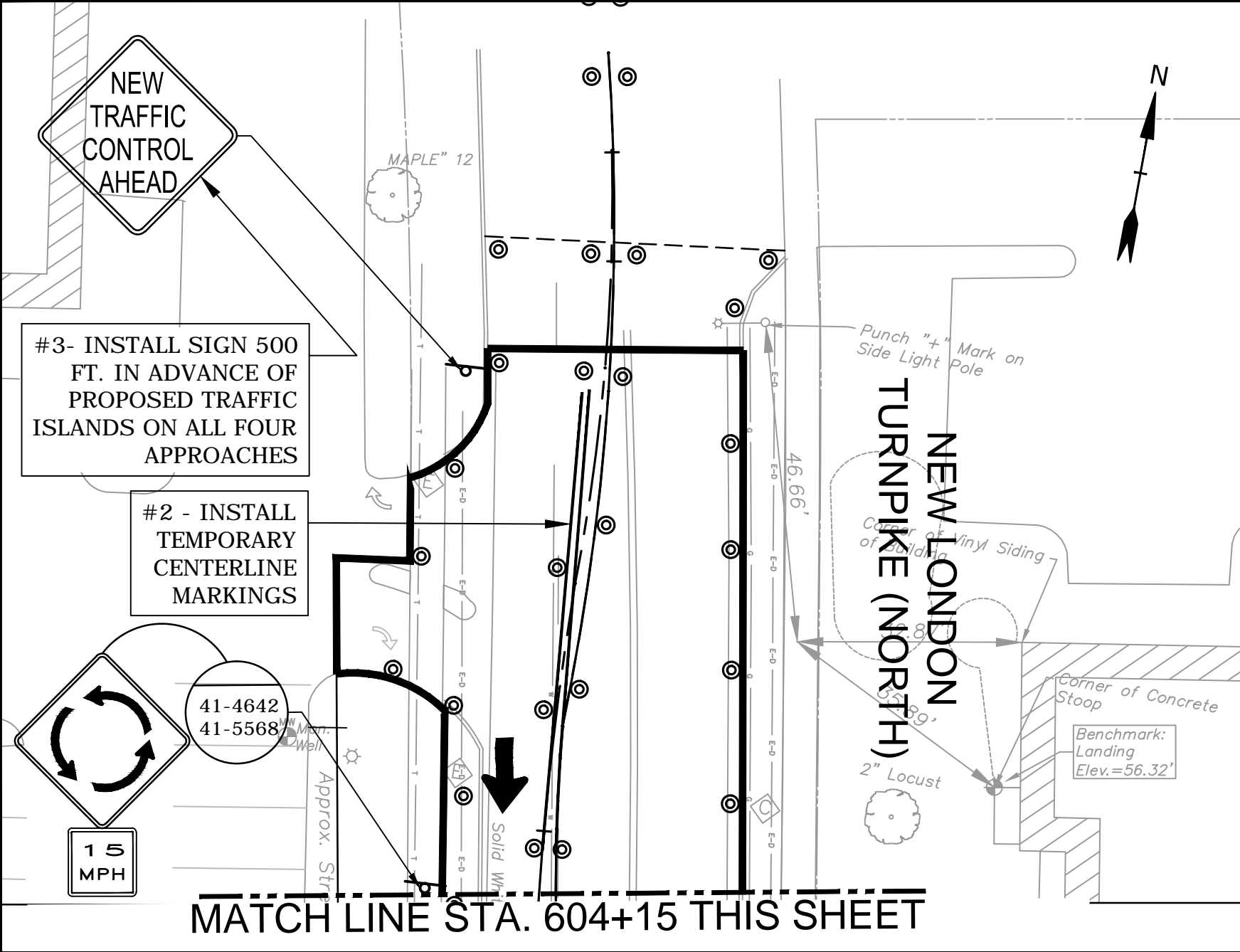
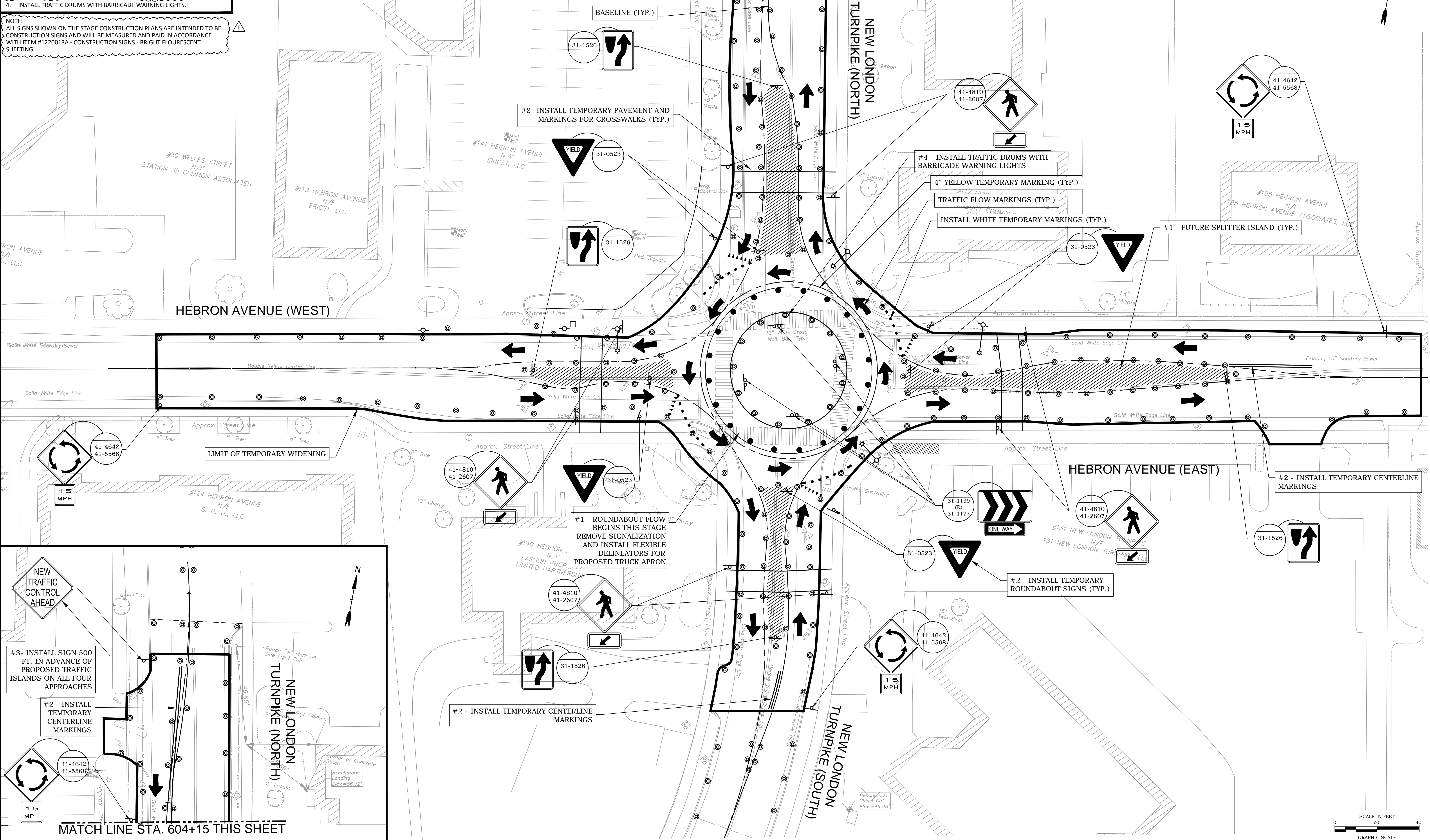
CD-2-1

STAGE 1B NOTES:

1. REMOVE ALL TRAFFIC SIGNAL EQUIPMENT.
2. INSTALL TEMPORARY MARKINGS AND SIGNS (TEMPORARY POSTS), REMOVE EXISTING MARKINGS.
3. INSTALL NEW TRAFFIC CONTROL AHEAD SIGNS ON ALL APPROACHES.
4. INSTALL TRAFFIC DRUMS WITH BARRICADE WARNING LIGHTS.

NOTE:
ALL SIGNS SHOWN ON THE STAGE CONSTRUCTION PLANS ARE INTENDED TO BE CONSTRUCTION SIGNS AND WILL BE MEASURED AND PAID IN ACCORDANCE WITH ITEM #1220013A - CONSTRUCTION SIGNS - BRIGHT FLOURESCENT SHEETING.

MATCH LINE STA. 604+15 THIS SHEET



MATCH LINE STA. 604+15 THIS SHEET

REV. NO.	DATE	DRWN	CHKD	REMARKS
1	07/16	D.G.	J.B.	REVISED PER ADDENDUM NO. 1

DESIGNED BY: J. BALSUKUS
 DRAWN BY: J. CABRERA
 SHEET CHK'D BY: J. BALSUKUS
 CROSS CHK'D BY: J. BALSUKUS
 APPROVED BY: J. BALSUKUS
 DATE: JULY 2016



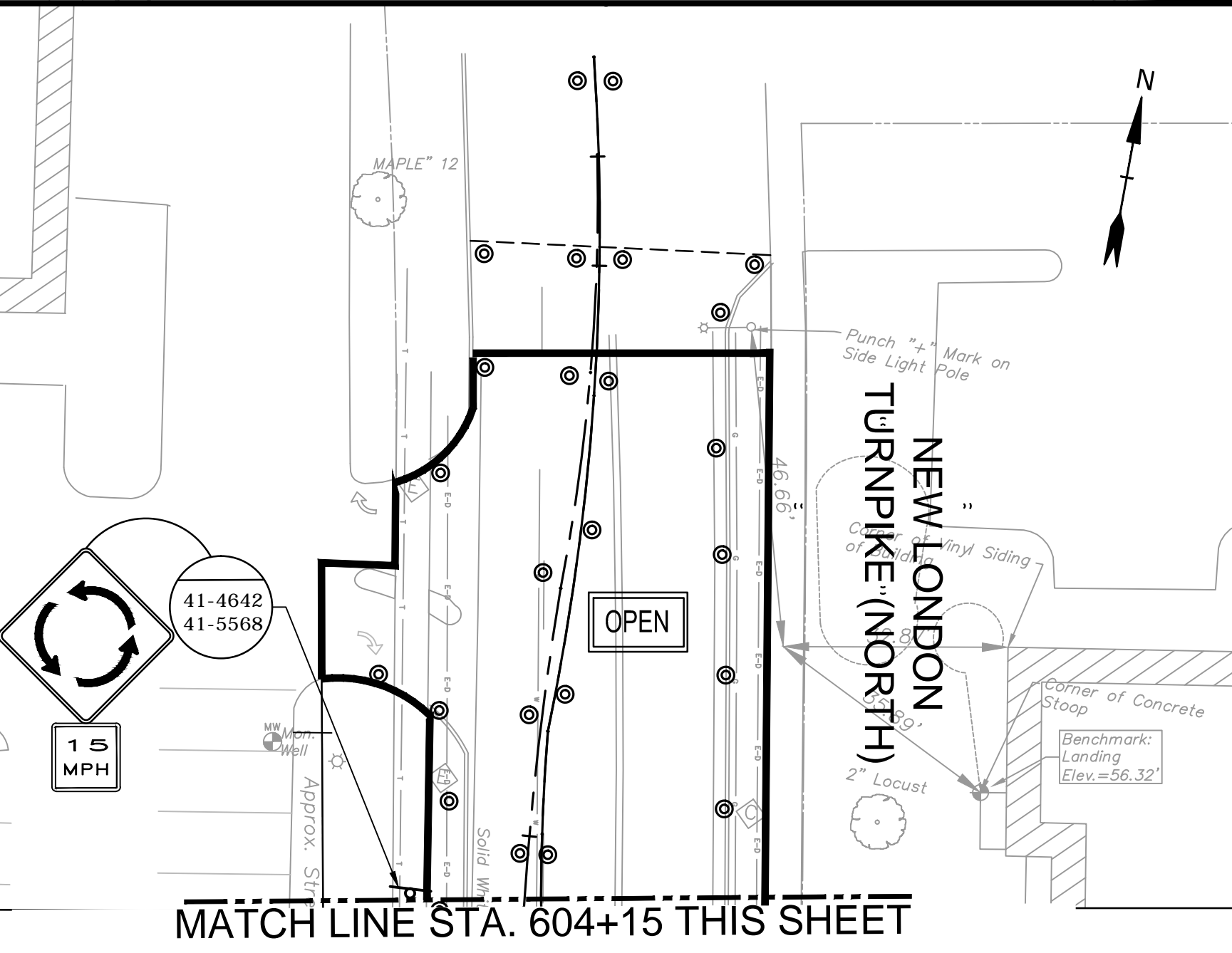
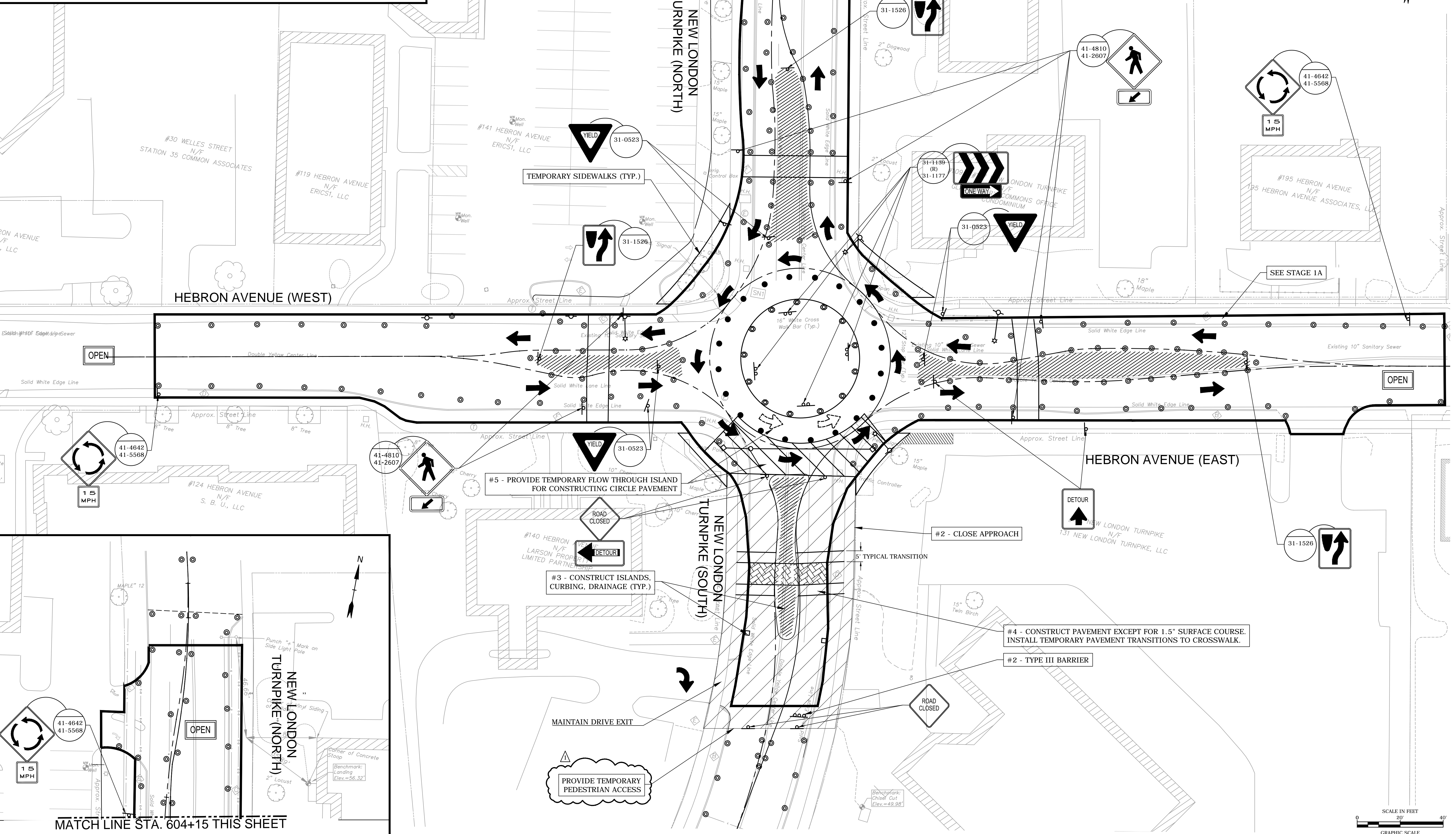
TOWN OF GLASTONBURY, CONNECTICUT
 INTERSECTION IMPROVEMENT
 HEBRON AVENUE ROUNDABOUTS:
 NEW LONDON TURNPIKE

TEMPORARY TRAFFIC CONTROL PLAN
 BEGIN ROUNDABOUT FLOW
 STAGE 1B

PROJECT NO. C1108
 FILE NAME: TSTTM01B.dwg
 SHEET NO. TC-1B-1

© 2012 CDM SMITH ALL RIGHTS RESERVED. THESE DOCUMENTS AND DESIGNS PROVIDED BY PROFESSIONAL SERVICE, INCORPORATED HEREIN, ARE THE PROPERTY OF CDM SMITH AND ARE NOT TO BE USED, IN WHOLE OR PART, FOR ANY OTHER PROJECT WITHOUT THE WRITTEN AUTHORIZATION OF CDM SMITH.

- STAGE 2A NOTES:**
1. IMPLEMENT STAGE 2A DETOUR.
 2. SET UP WORK ZONE, CLOSE NLT SOUTH APPROACH, INSTALL TYPE III BARRICADES.
 3. CONSTRUCT NLT SOUTH SPLITTER ISLANDS, CURBING DRAINAGE, CROSS WALK.
 4. CONSTRUCT PAVEMENT EXCEPT FOR 1.5" SURFACE COURSE. INSTALL TEMPORARY PAVEMENT TRANSITIONS TO CROSSWALK.
 5. PROVIDE TEMPORARY FLOW THROUGH ISLAND FOR CONSTRUCTING CIRCLE PAVEMENT.



MATCH LINE STA. 604+15 THIS SHEET

1	07/16	J.C.	D.G.	REVISED PER ADDENDUM NO. 1
REV. NO.	DATE	DRWN	CHKD	REMARKS

DESIGNED BY: J. BALSUS
 DRAWN BY: J. CABRERA
 SHEET CHK'D BY: J. BALSUS
 CROSS CHK'D BY: J. BALSUS
 APPROVED BY: J. BALSUS
 DATE: JULY 2016

CDM Smith
 111 Founders Plaza, Suite 1600
 East Hartford, CT 06108
 Tel: (860) 529-7615

TOWN OF GLASTONBURY, CONNECTICUT
 INTERSECTION IMPROVEMENT
 HEBRON AVENUE ROUNDABOUTS:
 NEW LONDON TURNPIKE

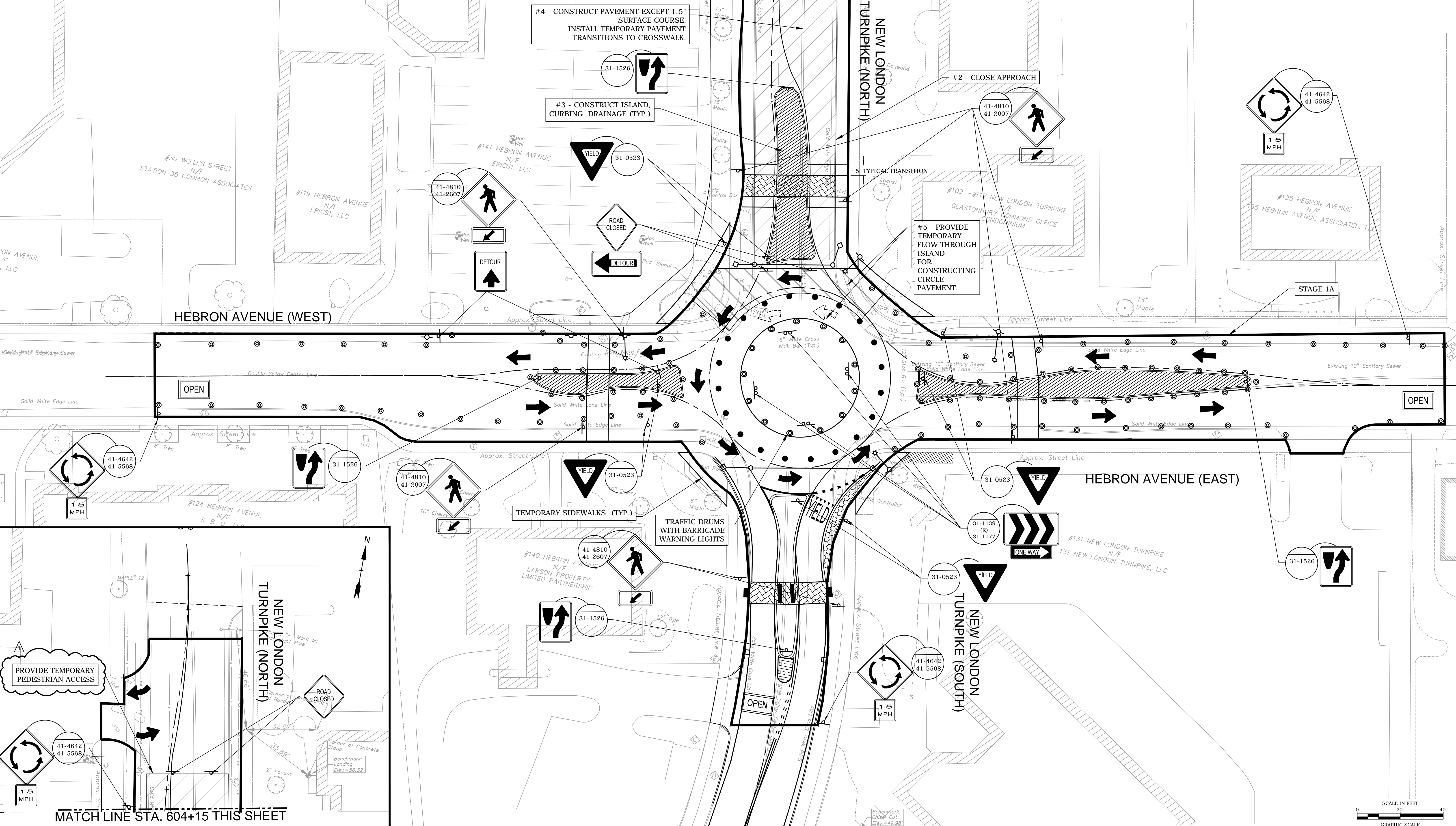
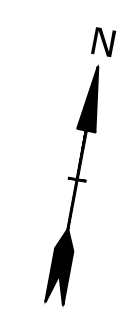
TEMPORARY TRAFFIC CONTROL PLAN
 CONSTRUCT NLT SOUTH APPROACH
 STAGE 2A

PROJECT NO. C1108
 FILE NAME: TST1M02A.dwg
 SHEET NO.
 TC-2A-1

© 2012 CDM SMITH. ALL RIGHTS RESERVED. STATEMENTS AND DESIGNS PROVIDED BY PROFESSIONAL SERVICE, INCORPORATED HEREIN, ARE THE PROPERTY OF CDM SMITH AND ARE NOT TO BE USED, IN WHOLE OR PART, FOR ANY OTHER PROJECT WITHOUT THE WRITTEN AUTHORIZATION OF CDM SMITH.

- STAGE 2B NOTES:**
- IMPLEMENT STAGE 2B DETOUR.
 - SET UP WORK ZONE, CLOSE NLT NORTH APPROACH.
 - CONSTRUCT NLT NORTH SPLITTER ISLANDS, CURBING DRAINAGE, CROSS WALK.
 - CONSTRUCT PAVEMENT EXCEPT FOR 1.5" SURFACE COURSE. INSTALL TEMPORARY PAVEMENT TRANSITIONS TO CROSSWALK.
 - PROVIDE TEMPORARY FLOW THROUGH ISLAND FOR CONSTRUCTING CIRCLE PAVEMENT.

MATCH LINE STA. 604+15 THIS SHEET



MATCH LINE STA. 604+15 THIS SHEET

REV. NO.	DATE	DRWN	CHKD	REMARKS
1	07/16	J.C.	D.G.	REVISED PER ADDENDUM NO. 1

DESIGNED BY: J. BALSUS
 DRAWN BY: J. CABRERA
 SHEET CHK'D BY: J. BALSUS
 CROSS CHK'D BY: J. BALSUS
 APPROVED BY: J. BALSUS
 DATE: JULY 2016

CDM Smith
 111 Founders Plaza, Suite 1600
 East Hartford, CT 06108
 Tel: (860) 529-7615

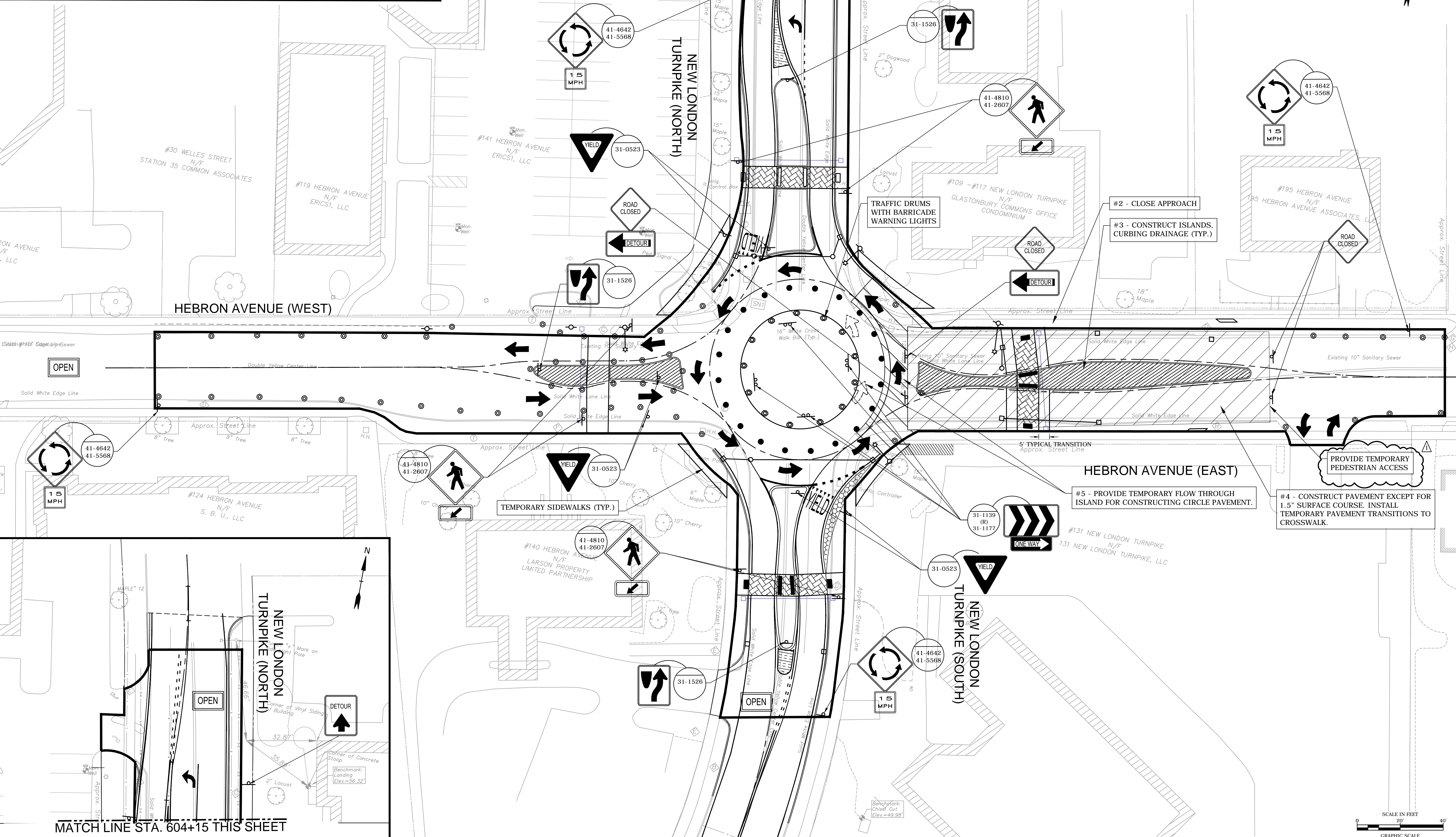
TOWN OF GLASTONBURY, CONNECTICUT
 INTERSECTION IMPROVEMENT
 HEBRON AVENUE ROUNDABOUTS:
 NEW LONDON TURNPIKE

TEMPORARY TRAFFIC CONTROL PLAN
 CONSTRUCT NLT NORTH APPROACH
 STAGE 2B

PROJECT NO.	C1108
FILE NAME	TSTTM02B.dwg
SHEET NO.	TC-2B-1

©2012 CDM SMITH. ALL RIGHTS RESERVED. COMMENTS AND DESIGNS PROVIDED BY PROFESSIONAL SERVICE, INCORPORATED HEREIN, ARE THE PROPERTY OF CDM SMITH AND ARE NOT TO BE USED, IN WHOLE OR PART, FOR ANY OTHER PROJECT WITHOUT THE WRITTEN AUTHORIZATION OF CDM SMITH.
 Project No: 10127-2016-10-Item 1b - Cabrook
 C:\pwworking\cdm\cdm\10127-2016-10-Item 1b - Cabrook\10127-2016-10-Item 1b - Cabrook\10127-2016-10-Item 1b - Cabrook.dwg

- STAGE 2C NOTES:**
1. IMPLEMENT STAGE 2C DETOUR.
 2. SET UP WORK ZONE, CLOSE HEBRON AVENUE EAST APPROACH.
 3. CONSTRUCT SPLITTER ISLANDS, CURBING DRAINAGE, CROSS WALK, BINDER PAVEMENT.
 4. CONSTRUCT PAVEMENT EXCEPT FOR 1.5" SURFACE COURSE. INSTALL TEMPORARY PAVEMENT TRANSITIONS TO CROSSWALK.
 5. PROVIDE TEMPORARY FLOW THROUGH ISLAND FOR CONSTRUCTING CIRCLE PAVEMENT.



REV. NO.	DATE	DRWN	CHKD	REMARKS
1	07/16	J.C.	D.G.	REVISED PER ADDENDUM NO. 1

DESIGNED BY: J. BALSUS
 DRAWN BY: J. CABRERA
 SHEET CHK'D BY: J. BALSUS
 CROSS CHK'D BY: J. BALSUS
 APPROVED BY: J. BALSUS
 DATE: JULY 2016

CDM Smith
 111 Founders Plaza, Suite 1600
 East Hartford, CT 06108
 Tel: (860) 529-7615

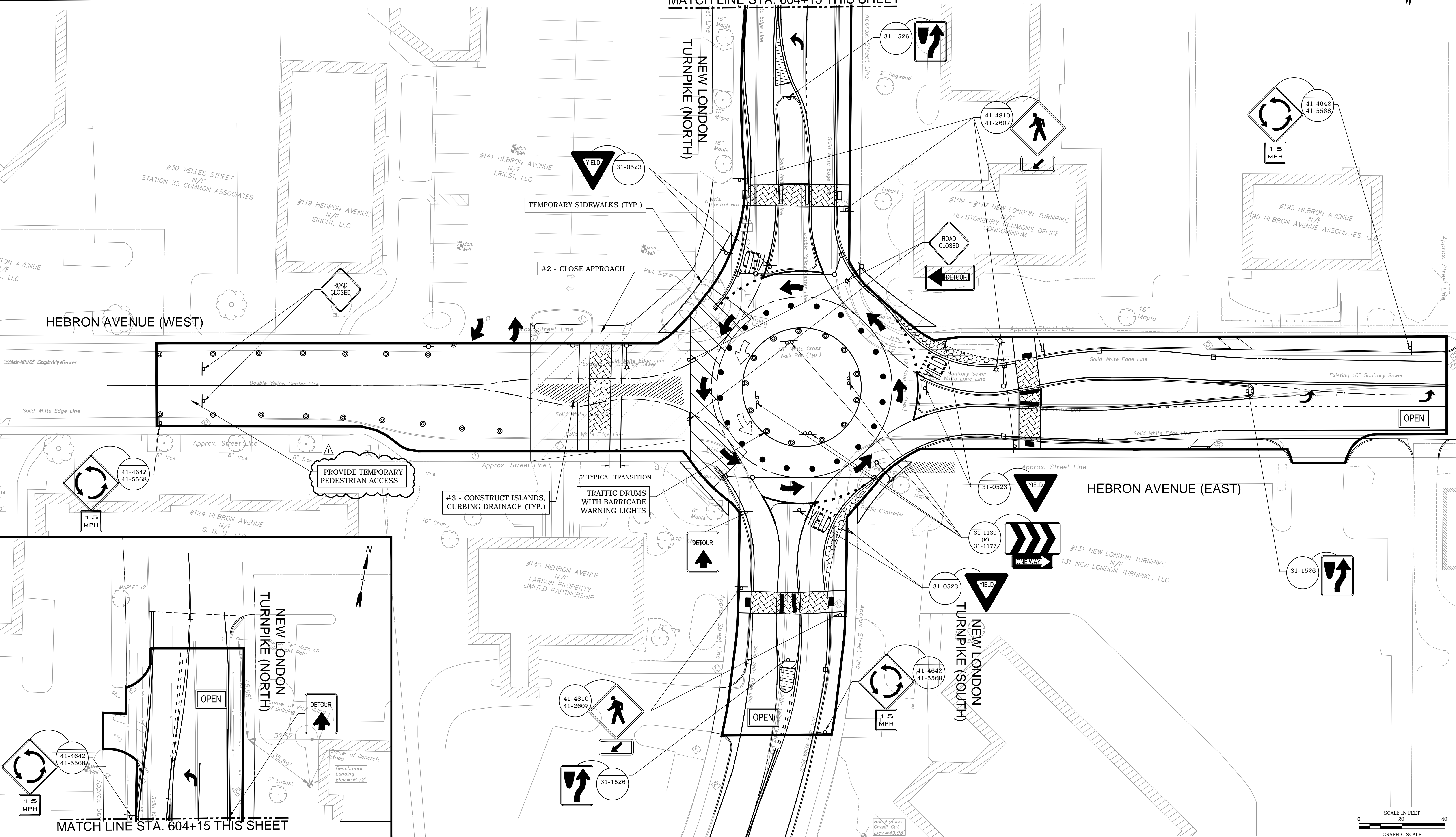
TOWN OF GLASTONBURY, CONNECTICUT
 INTERSECTION IMPROVEMENT
 HEBRON AVENUE ROUNDABOUTS:
 NEW LONDON TURNPIKE

TEMPORARY TRAFFIC CONTROL PLAN
 CONSTRUCT HEBRON AVENUE EAST APPROACH
 STAGE 2C

PROJECT NO.	C1108
FILE NAME	TST1M02C.dwg
SHEET NO.	TC-2C-1

© 2012 CDM SMITH. ALL RIGHTS RESERVED. PERMITS AND DESIGNS PROVIDED BY PROFESSIONAL SERVICE, INCORPORATED HEREIN. ARE THE PROPERTY OF CDM SMITH AND ARE NOT TO BE USED, IN WHOLE OR PART, FOR ANY OTHER PROJECT WITHOUT THE WRITTEN AUTHORIZATION OF CDM SMITH.

- STAGE 2D NOTES:**
1. IMPLEMENT STAGE 2D DETOUR.
 2. SET UP WORK ZONE, CLOSE HEBRON AVENUE WEST APPROACH.
 3. CONSTRUCT SPLITTER ISLANDS, CURBING DRAINAGE, CROSS WALK.
 4. CONSTRUCT PAVEMENT EXCEPT FOR 1.5" SURFACE COURSE. INSTALL TEMPORARY PAVEMENT TRANSITIONS TO CROSSWALK.
 5. PROVIDE TEMPORARY FLOW THROUGH ISLAND FOR CONSTRUCTING CIRCLE PAVEMENT.



© 2012 CDM SMITH ALL RIGHTS RESERVED. THESE DOCUMENTS AND DESIGNS PROVIDED BY PROFESSIONAL SERVICE, INCORPORATED HEREIN, ARE THE PROPERTY OF CDM SMITH AND ARE NOT TO BE USED, IN WHOLE OR PART, FOR ANY OTHER PROJECT WITHOUT THE WRITTEN AUTHORIZATION OF CDM SMITH.

REV. NO.	DATE	DRWN	CHKD	REMARKS
1	07/16	J.C	D.G	REVISED PER ADDENDUM NO. 1

DESIGNED BY: J. BALSUKUS
 DRAWN BY: J. CABRERA
 SHEET CHK'D BY: J. BALSUKUS
 CROSS CHK'D BY: J. BALSUKUS
 APPROVED BY: J. BALSUKUS
 DATE: JULY 2016

CDM Smith
 111 Founders Plaza, Suite 1600
 East Hartford, CT 06108
 Tel: (860) 529-7615

TOWN OF GLASTONBURY, CONNECTICUT
 INTERSECTION IMPROVEMENT
 HEBRON AVENUE ROUNDABOUTS:
 NEW LONDON TURNPIKE

TEMPORARY TRAFFIC CONTROL PLAN
 CONSTRUCT HEBRON AVENUE WEST APPROACH
 STAGE 2D

PROJECT NO. C1108
 FILE NAME: TSTM02D.dwg
 SHEET NO.
TC-2D-1

