



MAPNET II® Addressable Modules 2190-9172, -9172A Supervised IAMs Installation Instructions

The 2190-9172 or 2190-9172A Supervised IAM is connected to a 2120 Multiplex MAPNET II® Communicating Device Transponder (CDT), 4020, 4100+, or 4120 System by a single wire pair (MAPNET II®). The IAM receives both power and data over this pair; no additional wiring is required (unless Style 6 operation is used).

The 2190-9172 or 2190-9172A IAM is designed to monitor normally open (N.O.) alarm contacts.

INSTALLATION

IAM installation consists of:

- Setting the IAM's address and labeling the IAM.
- Making electrical connections to the IAM.
- Mechanically installing the IAM.

+ red
 C - orange
 yel
 Blue

Part A — Setting the IAM's Address and Labeling the IAM

Each IAM has a unique address. This address is associated with a custom label which identifies its physical location within a building. The IAM's address and location must match up with the address listed in the specification sheets of the 2120 Job Configuration Report File, 4020 Programmer's Report, or 4100 Programmer's Report.

Address Setting for the 2120 CDT System

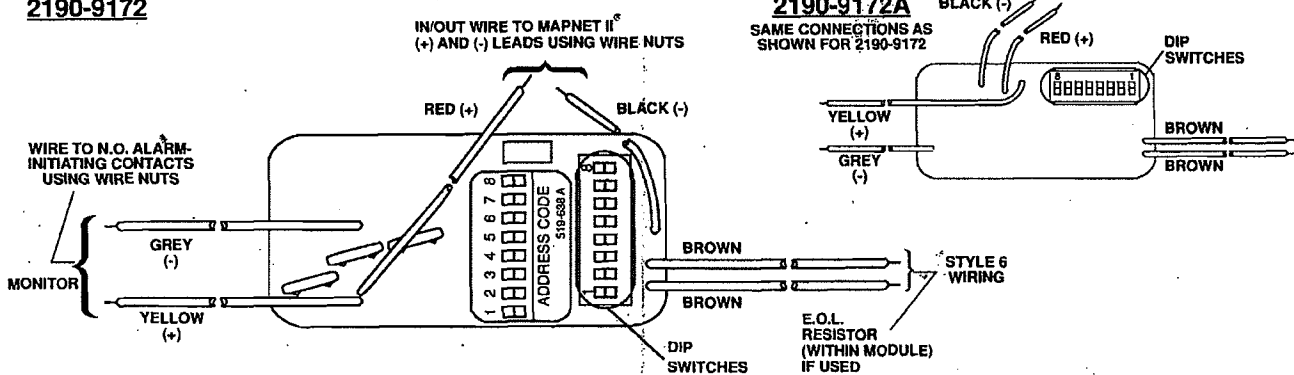
- Using the 2120 Job Configuration Report File, find the entry for the IAM you are about to install. The CUSTOM LABEL column provides the location while the DEVICE ADDRESS column provides the switch setting data.
- Using the switch setting data for the IAM you're installing, set the IAM's address. See Figure 1 for location of switches. Use a small screwdriver or pen to set the switches.

For the switch setting data in the DEVICE ADDRESS column, "0" is switch "ON" while "1" is switch "OFF."

Note: DIP Switch 8 is used for alarm latch — "ON"=NON-LATCH while "OFF"=LATCH.

- Double-check the location of the IAM and its address before proceeding to Part B.

2190-9172



Location of IAM's DIP Switches and Unit Interconnections

FIGURE 1

ATTACHMENT E 1 of 6

MAPNET II® Communication Net is protected by U.S. Patent No. 4,796,025.
Suffix "C" following an 8-digit Product ID number denotes ULC-listed product.

© 1995 Simplex Time Recorder Co., Gardner, MA 01441-0001 U.S.A.
© 1995 Simplex International Time Equipment Co., Ltd., Mississauga, Ontario L4V 1H3 Canada

All specifications and other information shown were current as of publication, and are subject to change without notice.

PER-21-025 (574-675)
Ed 6 95



4901 Horns and 4903 Horn/Visible Units Installation Instructions

INTRODUCTION

The 4901 Horns and 4903 Horn/Visible Units are Notification Appliances listed by Underwriters' Laboratories (UL). Notification Appliances provide an audible and/or visible warning indication of an alarm condition when activated from the control panel of a UL-listed, Simplex Protective Signaling System. **When Notification Appliances emit sound and/or flash a light, they indicate the possibility of an emergency situation that requires your immediate attention.**

Notification Appliances, and the Protective Signaling System itself, have certain limitations and requirements for safety, placement, installation, and testing. Since you must know the limitations and adhere to the requirements, **keep these instructions at a central location for future reference so that all people who use, maintain, and test the Protective Signaling System have access to this information.**

TABLE OF CONTENTS

SECTION	PAGE NO.
Limitations	1
Safety	2
Placement	2
Features	3
Wiring	6
Horns	6
Horn/Visible Units	8
Mounting	11
Horns	11
Horn/Visible Units	16
Removing Lens Cover	Rear Page
Testing	Rear Page

LIMITATIONS

- Notification Appliances do not sense any hazardous conditions** such as smoke, fire, explosion, etc.; they are activated by a control panel as part of a system that does sense such conditions.
- Notification Appliances do not provide their own power.** They receive their power from the Protective Signaling System. If power is not supplied to the Notification Appliances (for whatever reason), the Notification Appliances will not provide an audible and/or visible warning. **THEREFORE, BACK-UP POWER SUPPLIES, OR OTHER BACK-UP POWER SOURCES, ARE RECOMMENDED FOR THE PROTECTIVE SIGNALING SYSTEM.**

Suffix "H" following an 8-digit Product ID number denotes humid-application appliance.

© 1995 Simplex Time Recorder Co.

PER-21-204 (574-687)

All specifications and other information shown were current as of publication, and are subject to change without notice.

Ed 4 95

INTRODUCTION

This procedure is used to install the 2098-9734 Power Pack. The 2098-9734 is used as a power source for the 2098-9529 Detector Base, or as a power source for the 2098-9536 Base when used in conjunction with a 2098-9735 or 2098-9739 Relay.

When using the 2098-9734 to provide power for the 2098-9529 or 2098-9536 base, use the base for supplementary signaling only.

INSTALLATION

1. Connect wires to power pack and base as shown below in Figure 1 for 2098-9529 Base or Figure 1A for 2098-9536 Base.

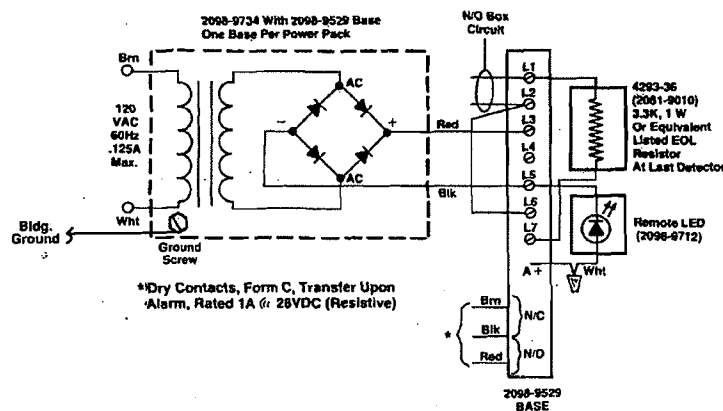


FIGURE 1

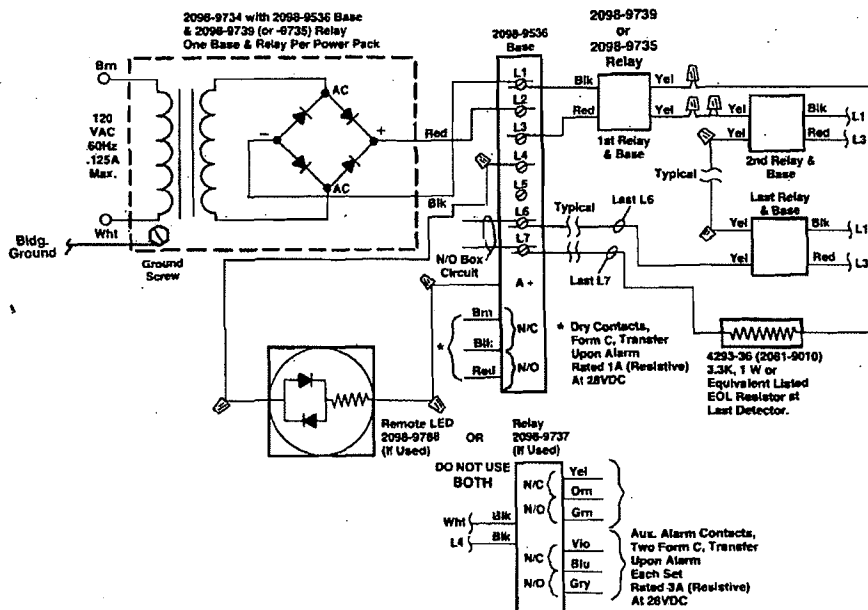


FIGURE 1A

Carefree® RECHARGEABLE LEAD ACID BATTERY MADE IN U.S.A.

To obtain maximum operating efficiency, life, and to maintain the warranty of the CAREFREE battery, the following should be observed:

OPERATING INSTRUCTIONS

All CAREFREE batteries are carefully assembled and with proper charging will provide excellent service. When placing the battery into service it must be inspected to make sure that the battery has not been damaged by rough handling. If the unit has been damaged, there is a possibility of a loss of a small amount of sulfuric acid electrolyte and possible corrosion of adjacent components. Any sulfuric acid can cause severe burns to the skin and eyes. If contact is made with a damaged battery, immediately wash the contact area with water for at least 5 minutes. If battery is damaged in shipment, file claim with freight carrier.

Receiving the CAREFREE Battery – CAREFREE batteries are shipped in a fully charged condition. Before placing in service after storage, batteries should be charged for 18 to 20 hours.

Charging the CAREFREE Battery – A constant potential-current limited charger is required to boost charge or recharge the maintenance free battery. The charger should be set at the equivalent of 2.50 to 2.55 volts per cell with current limited to ten percent of rated capacity. Generally 18-24 hours is adequate to return battery to full charge. Should a decay in performance be observed, improvement may result by periodically extending the charge time to 48 hours. For stand-by applications the CAREFREE battery is charged at a constant potential of 2.28-2.32 volts per cell and will, without maintenance, sustain continuous float charging for periods measured in years. Charging in the inverted position is not recommended.

Storing the CAREFREE Battery – Lead-acid batteries must not be allowed to remain in a discharged state and should be recharged as soon as possible after each use. Batteries stored at 65° F or less shall be charged every six months. Units stored at room temperature or above shall be charged every four months. Batteries should not be stored above 100° F.

Operational Temperatures – Lead-acid batteries will deliver energy at temperatures as low as -70°F, but cannot be efficiently recharged and discharged over a prolonged period below an ambient temperature of 32°F.

OPERATING AND HANDLING CAUTIONS

1. DO NOT SHORT CIRCUIT BATTERY TERMINALS. SHORT CIRCUIT PRODUCES EXCESSIVE HEATING AND COULD CAUSE A FIRE OR EXPLOSION.
2. DO NOT CHARGE IN GAS TIGHT ENCLOSURES. THE BATTERY ENCLOSURE MUST BE ADEQUATELY VENTILATED AND SHOULD BE FREE OF IGNITION SOURCES SUCH AS ELECTRICAL CONTACTS, MOTORS, OPEN FLAME OR SMOKING PRODUCTS. GASES LIBERATED DURING OVERCHARGE, HYDROGEN AND OXYGEN, CAN CAUSE AN EXPLOSION IF IGNITED.
3. DO NOT PUNCTURE, INCINERATE OR IN ANY WAY ATTEMPT TO DISASSEMBLE THE BATTERY. THE BATTERY CONTAINS TOXIC LEAD ELECTRODES AND CORROSIVE SULFURIC ACID. SULFURIC ACID CAN CAUSE MATERIAL DAMAGE AND PERSONAL INJURY. IF CONTACT IS MADE WITH THE ACID, IMMEDIATELY FLUSH THE AREA WITH WATER. SHOULD THE EYES BE AFFECTED, FLUSH LIBERALLY WITH WATER AND SEEK MEDICAL ATTENTION AS SOON AS POSSIBLE. A GOOD NEUTRALIZING SOLUTION FOR SULFURIC ACID IS HOUSEHOLD BAKING SODA IN WATER. A MATERIAL SAFETY DATA SHEET IS AVAILABLE UPON REQUEST.
4. KEEP BATTERIES AND CHARGERS AWAY FROM CHILDREN.
5. IT IS UNLAWFUL TO DISPOSE OF THIS BATTERY IN NORMAL SOLID WASTE. THIS BATTERY IS CLASSIFIED AS A NONSPILLABLE, SEALED LEAD BATTERY AND MUST BE RECYCLED OR DISPOSED OF PROPERLY AND IN ACCORDANCE WITH LOCAL AND STATE REGULATIONS. IF NO DISPOSAL SYSTEM IS AVAILABLE IN YOUR STATE, YOU MAY SHIP THE BATTERY FREIGHT PREPAID TO:

EAGLE-PICHER INDUSTRIES, INC.

14212 BETHEL ROAD

SENECA, MO 64865

ATTN: BATTERY DISPOSAL DEPARTMENT

A HANDLING FEE OF \$2.00 (U.S. DOLLARS) PER BATTERY MUST BE INCLUDED WITH SHIPMENT.

A BATTERY RETURN AUTHORIZATION NUMBER (B.R.A.) MUST BE OBTAINED PRIOR TO SHIPPING. THIS B.R.A. NUMBER MAY BE OBTAINED BY CALLING AREA CODE 417-776-2256 AND ASKING FOR BATTERY RETURN DEPARTMENT.

IMPORTANT



REMEMBER, ALL LEAD-ACID BATTERIES ARE RECYCLABLE. PROPER DISPOSAL OF BATTERIES IS VERY IMPORTANT TO PROTECTING THE ENVIRONMENT. PLEASE DO YOUR PART BY DISPOSING OF LEAD-ACID BATTERIES WITH AN E.P.A. CERTIFIED BATTERY RECYCLER. THANK YOU.



Limited Warranty

Every CAREFREE battery has been carefully inspected and tested before shipment. Accordingly, we warrant each CAREFREE battery which is sold, against defects in workmanship and material under normal use and recommended charging methods for a period of 1 year after date of manufacture. Our obligation under this warranty shall be limited to the repair or replacement, FOB factory, of any CAREFREE battery which is returned as a complete unit to the factory within the 1 year warranty period, transportation charges prepaid, and which proves to our satisfaction, upon examination, to be defective. This warranty shall not extend to, and we shall have no responsibility with respect to, products which have been abused, misused or altered, or as to which repair has been made or attempted by others. **BATTERIES THAT HAVE BEEN SEVERELY OVERCHARGED OR DISCHARGED (INCLUDING LONG OR EXTENDED STORAGE), ARE NOT COVERED UNDER WARRANTY. THIS WARRANTY IS MADE IN LIEU OF ALL OTHER WARRANTIES WITH RESPECT TO THE PRODUCT COVERED HEREBY AND THERE ARE NO OTHER WARRANTIES, WHETHER EXPRESSED, OR IMPLIED, OF MERCHANTABILITY, FITNESS FOR A PARTICULAR PURPOSE OR OTHERWISE, EXCEPT THE WARRANTY EXPRESSLY STATED HEREIN. THE REMEDY SET FORTH HEREIN SHALL BE THE SOLE EXCLUSIVE REMEDY OF ANY PURCHASER WITH RESPECT TO ANY DEFECTIVE PRODUCT.** Under no circumstances shall we be liable for any loss, including but not limited to incidental or consequential damages for lost profits, lost sales, injury to person or property, or any other incidental or consequential loss suffered or incurred with respect to any defective product.

Eagle-Picher Industries, Inc.

COMMERCIAL PRODUCTS DEPARTMENT

P.O. BOX 130 * SENECA, MISSOURI 64865 * PHONE 417-776-2256 * FAX 417-776-2257

ATTACHMENT E

4 of 6



Addressable Manual Stations
MAPNET I® 2099-9760
MAPNET II®
2099-9135, -9761, -9795, -9796, & -9797
Installation Instructions

INTRODUCTION

These procedures are used to install the addressable manual station. Instructions for setting the manual station's address are also provided. The three types of stations (single-action, double-action, and local) are installed in the same manner.

A manual station is connected to a 2120 Multiplex Communicating Device Transponder (CDT), 4020, 4100+, or 4120 System by a single wire pair (MAPNET®). A manual station obtains both power and data over MAPNET®.

Manual Station Features (English Language Units Only)
TABLE 1

PRODUCT I.D. NO.	SINGLE-ACTION	GLASS DOUBLE-ACTION	PUSH DOUBLE-ACTION	MAPNET I*	MAPNET II*	* LOCAL COVER	NO SIMPLEX LOGO
2099-9135	—	—	X	—	X	—	X
2099-9760	—	—	X	X	—	—	—
2099-9761	—	—	X	—	X	—	—
2099-9795	X	—	—	—	X	—	—
2099-9796	—	X	—	—	X	—	—
2099-9797	X	—	—	—	X	X	—

* COVER IS MARKED "LOCAL"

INSTALLATION

Manual station installation consists of:

- A. Setting the manual station's address.
- B. Making electrical connections to the manual station.
- C. Mechanically installing the manual station.

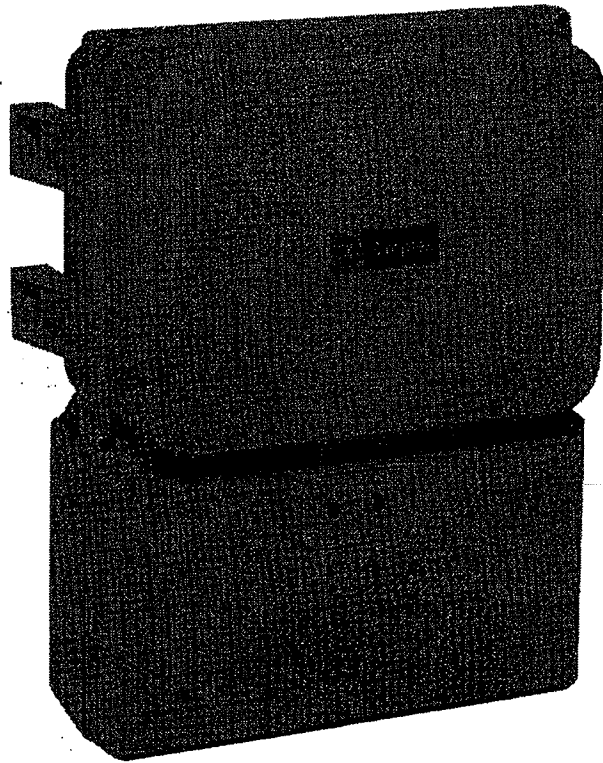
Part A — Setting the Manual Station's Address

Each manual station has a unique address. This address is associated with a custom label which identifies its physical location within a building. The manual station's address and location must match up with the address listed in the specification sheets of the 2120 Job Configuration Report or the Programmer's Report for the 4020, 4100+, or 4120 System.



4098-9706, -9707
Duct Housings

Installation Instructions



ATTACHMENT E

6 of 6