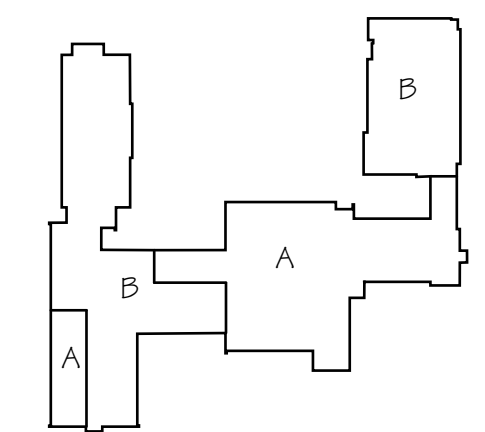


STATE BUILDING CODE
International Building Code 2003
Connecticut Supplement 2005

- 1.0 EXISTING BUILDING (Chapter 34): YES
 1.1 Continuation of Existing Use: NO
 1.2 Change of Use: YES
- 2.0 NEW BUILDINGS OR ADDITIONS:
 2.1 Exceeds Threshold Building Limits: NO
- 3.0 USE GROUP CLASSIFICATION (302.1): MIXED USE SEPARATED
 3.1 MIXED USES (302.2): EDUCATIONAL, ASSEMBLY, BUSINESS
- 4.0 HEIGHT AND AREA COMPUTATION - CASE 1:
 4.1 BUILDING HEIGHT:
 4.1.1 Actual Building Height: 2 Stories/43 Feet
 4.1.2 Allowable Building Height (Table 503): 2 Stories/55 Feet
- 4.2 OPEN PERIMETER COMPUTATION:
 Total Perimeter = 2163' Total Open Perimeter = 2101'
 $\% \text{ increase for open perimeter} = \frac{W}{30} = \frac{30}{30} = 100\%$
 $\% \text{ increase for open perimeter} = 100 \times (\text{Open Perimeter/Total Perimeter} - .25) \times (W/30)$
 $= 100 \times (2101/2163 - .25) \times (30/30) = 72\%$
- 4.3 TABULAR AREA ADJUSTMENTS:
 $\% \text{ increase for tabular area: } 100\%$
 $\% \text{ increase for open perimeter: } 72\%$
 $\% \text{ increase for sprinklers: } 200\%$
TOTAL % INCREASE FOR TABULAR AREA ADJUSTMENT: 372%
- 4.4 ACTUAL GROSS FLOOR AREA (Largest Floor): 51,385 SF
 4.5 ACTUAL GROSS FLOOR AREA (Entire Building): 85,530 SF
- 4.6 ADJUSTED TABULAR AREA - See 4.7
- 4.7 ALLOWABLE BUILDING AREA PER FLOOR:
 Total % increase for tabular area adjustment: 372%
- | | | | |
|---|-----------|------------|------------|
| a) ADJUSTED TABULAR AREA (actual floor area of each use group/adjustment must be < Table 503) | A = 9,500 | B = 23,000 | E = 14,500 |
| b) ALLOWABLE AREA per floor (Tabular Area x adjustment) | 35,430 | 85,560 | sq. ft. |
| c) ACTUAL AREA: | 22,146 | 28,869 | sq. ft. |



- 6.0 CONSTRUCTION TYPE:
 Minimum Type of Construction Required: II-B
 Actual Type of Construction Provided: II-B
- 7.0 MEANS OF EGRESS:
 7.1 Total Occupant Load (Entire Building): 2,357
 7.2 Total Occupant Load (Largest Floor): 2,072
 7.3 Total Capacity of Exits (Exit Discharge): 6,840
- 8.0 FIRE RESISTANCE RATING OF STRUCTURAL ELEMENTS REFER TO CONSTRUCTION DOCUMENTS FOR THE FOLLOWING:
 8.1 Exterior Walls:
 8.1.1 Load Bearing (Tbl. 601): 0 HRS
 8.1.2 Non Load Bearing (Tbl. 602): 2 HRS
 8.2 Fire Walls and Party Walls (Tbl. 705.4): 2 HRS
 8.3 Fire Separation Assemblies:
 8.3.1 Fire enclosure of exits (1019.1): 1 HR
 8.3.2 Shafts (707.4): 1 HR
 8.3.3 Mixed Use Separation (Tbl. 302.3.2): 2 HRS
 8.3.4 Other Separation Assemblies (Tbl. 706.3.7): 1 HR
 8.4 Fire Partitions (708.3): 1 HR
 8.5 Dwelling Unit Separations: NA
 8.6 Smoke Barriers (709.3): 1 HR
 8.7 Other Non Bearing Partitions (710.3): 0 HRS
 8.8 Interior Bearing Walls, Bearing Partitions, Columns, Girders, Trusses and Framing (Tbl. 601): 0 HRS
 8.8.1 Supporting more than one floor: 0 HRS
 8.8.2 Supporting one floor only or a roof: 0 HRS
 8.8.3 Structural members supporting wall: 0 HRS
 8.9 Floor Construction Including Beams (Tbl. 601): 0 HRS
 8.10 Roof Construction (Tbl. 601): 0 HRS
 8.10.1 Height to lowest member <= 15 ft.: 0 HRS
 8.10.2 Height to lowest member > 15 ft.: 0 HRS
 8.10.3 Height to lowest member >= 20 ft.: 0 HRS
- 9.0 FIRE PROTECTION SYSTEM (Chapter 9):
 9.1 Fire Suppression Systems: Automatic Sprinkler System
 9.2 Alarms: Automatic, Audible/Visible
 9.3 Automatic Fire Detection System: Provided
 9.4 Smoke Control System: Not Required
 9.5 Supervision: Provided

STATE FIRE SAFETY CODE
International Fire Code 2003
NFPA 1, Uniform Fire Code 2003
NFPA 101, Life Safety Code 2003
Connecticut Supplement 2005

- 1.0 CLASSIFICATION OF OCCUPANCY: Mixed (Educational, Assembly, Business)
 2.0 CONSTRUCTION CLASSIFICATION: Existing
 3.0 MINIMUM CONSTRUCTION TYPE REQUIRED: Type II-000
 4.0 ACTUAL CONSTRUCTION TYPE PROVIDED: Type II-000
 5.0 NOTIFICATIONS/ALARMS (Chapter 9): Audible/Visual
 6.0 DETECTION (Chapter 9): Smoke/Heat Where Required
 7.0 EXTINGUISHMENT REQUIREMENTS (Chapter 9): Automatic Sprinkler System

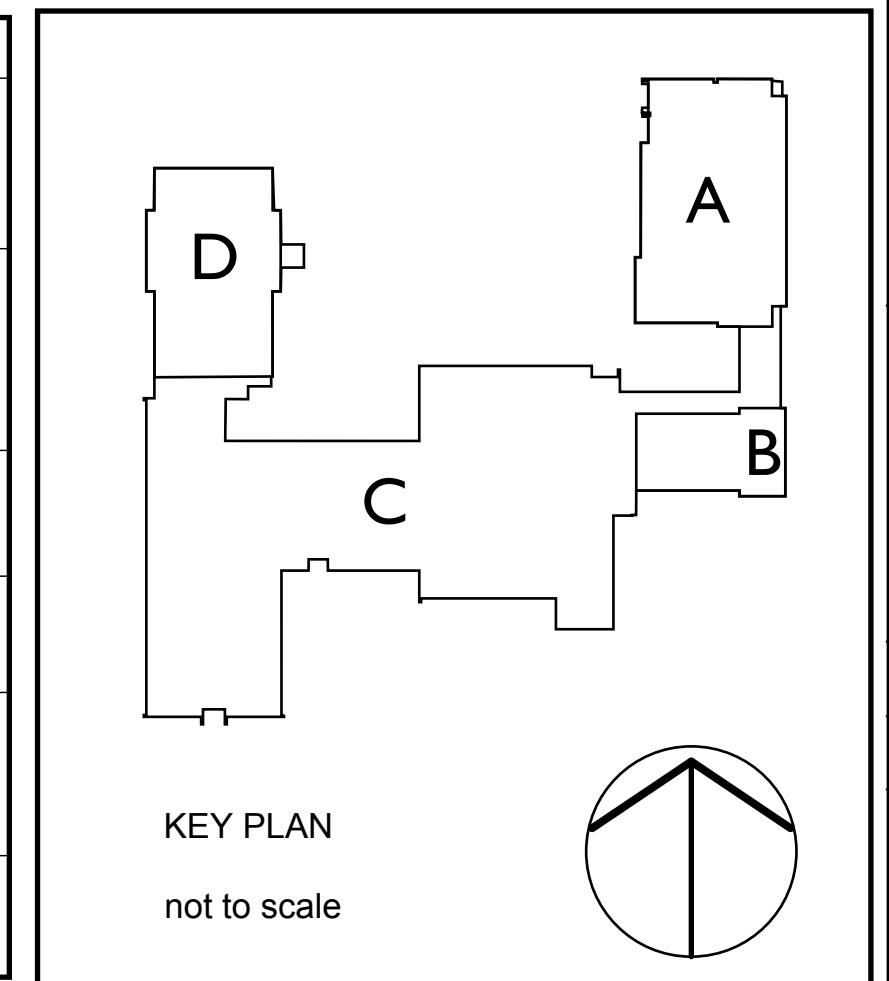
INTERNATIONAL PLUMBING CODE 1997

- "A" Assembly Total: 1408
 704 Male / 125 = 6 Water Closets/Urinals
 704 Female / 65 = 11 Water Closets
 1408 / 200 = 8 Lavatories
 1408 / 1000 = 15 Drinking Fountains
- "E" Education Total: 186
 186 / 50 = 4 Water Closets/Urinals
 186 / 50 = 4 Lavatories
 186 / 100 = 2 Drinking Fountains
- "B" Business Total: 724
 5025 + 674/50 = 16 Water Closets/Urinals
 5040 + 674/80 = 10 Lavatories
 674/100 = 7 Drinking Fountains
- | TOTAL | REQUIRED | PROVIDED |
|----------------------|----------|----------|
| Male WC/Urinals = | 16 | 20 |
| Female WC = | 20 | 30 |
| Lavatories = | 22 | 33 |
| Drinking Fountains = | 24 | 3 |
| Service Sink = | 3 | 2 |

FI BASEMENT FLOOR PLAN
A-101/SCALE 1/16" = 1'-0"

SYMBOLS LEGEND:

$\frac{768}{24} = 32$	ROOM OCCUPANCY LOAD AREA IN SQUARE FEET
$\frac{768}{24} = 32$	OCCUPANCY LOAD FACTOR
$\frac{0}{16} = 0$	EXIT CAPACITY ACTUAL EGRESS OCCUPANCY OF DOOR OR STAIR
$\frac{0}{16} = 0$	MAXIMUM ALLOWABLE EGRESS OCCUPANCY OF DOOR OR STAIR
\rightarrow	DIRECTION OF TRAVEL
\rightarrow	ACTUAL EGRESS OCCUPANCY OF DOOR OR STAIR
\rightarrow	MAXIMUM TRAVEL DISTANCE FROM FURTHEST POINT
	ACCESSIBLE AREA OR EXIT
■■■■■■	1 HOUR FIRE SEPARATION



Architect
Bianco Giolitto Weston Architects LLC
300 Plaza Middlesex, Middletown, CT 06457
p 860.344.9332
f 860.347.4075
www.bgwa.com

ACADEMY SCHOOL TOWN FACILITIES STUDY
GLASTONBURY, CONNECTICUT

REVISIONS:

BASEMENT CODE PLAN

DATE: 10/9/07

BGW JOB NO.: 06080

DRAWING NO.

A-101