

# Connecting Wirelessly to a Town Projector

---

Many town meeting rooms now have projectors with wireless capability for connections. This guide should help with getting connected.

## Laptops

To connect a Town Laptop Computer to a Town Projector installed in one of the meeting rooms you will need the following;

- A Town Laptop computer with WPG 370 software installed.
- A Viewsonic Wireless Gateway connected to the ceiling mounted projector with both the Wireless Gateway remote and the Projector remote.
- A ceiling mounted projector with with a digital connection (HDMI).

## Step 1

Turn on Projector using the Projector Remote Control. The Power button is normally in the upper left corner of the remote control.

## Step 2

Turn on the WPG (Wireless Presentation Gateway) using the Viewsonic Remote control.

Once the projector detects the WPG input you should see a screen image something like this;



# Connecting Wirelessly to a Town Projector

---

## Step 3

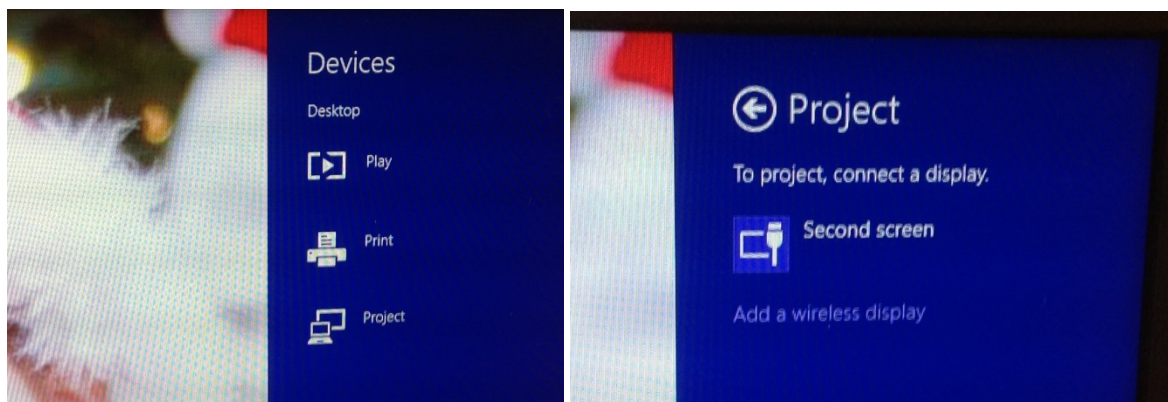
At this point it is necessary to choose between Viewsonic WiFi or Intel WIDI to mirror you laptop screen. Intel WIDI is faster, but only works on some of the newer Dell Laptop computers. Most Laptops will have a label on them by the keyboard for Wireless Display:WIDI or Wireless Display:Viewsonic.

### Intel WiDi

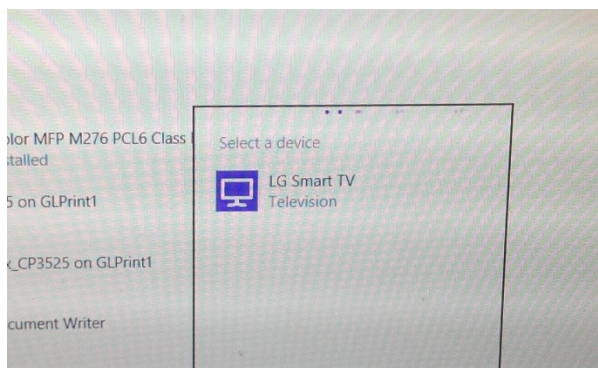
A town computer that supports WiDi will be using Windows 8.

Use the Viewsonic remote to select WIDI and click OK to set the gateway in pairing mode for the connection to the laptop.

On the Laptop Computer move the mouse all the way to the right to bring up the charms menu and then click on devices. Once devices is selected click on Project and then Add a Wireless Display



The laptop should search and find the gateway device at which point you select it. At this point you should see your screen mirrored to the Projector



### Viewsonic Wifi

To connect using the Viewsonic WiFi click the WiFi option on the onscreen menu on the projector using the viewsonic Remote. You will then be shown the following screen.

# Connecting Wirelessly to a Town Projector



The SSID for each of the meeting rooms are listed below;

Meeting Room B: meetrmb

Open the Available Networks Dialog Box on the Laptop. (Double Click the Antenna bars in the system tray in the lower right corner of the screen)

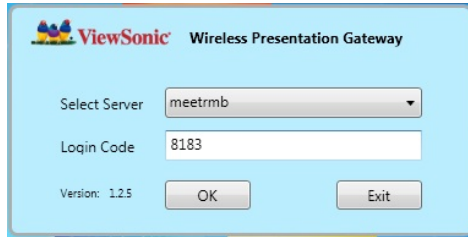
Select the appropriate SSID for the room you are using and click connect. It should look something like this;



Find the Viewsonic icon on the laptop desktop and double click. You should see the following;

## Connecting Wirelessly to a Town Projector

---



The server should already be selected. Enter the login code from the screen and click OK. Once complete you should see the following;



Click on the triangle and the screen should start mirroring.

### **Android Smart Phones and Android Tablets**

The system is capable of mirroring some Android Smart Phone and Tablets if the phone supports WiFi Direct and Miracast.

When the View Sonic Wireless Gateway boots up and is displayed on the screen select "Screen Mirroring".

## Connecting Wirelessly to a Town Projector

---



On the Android device you will need to find out how to enable WiFi Direct on your specific brand and model of phone.