

THE

PERSPECTIVE

Town of Glastonbury Annual Report 2005-2006



Dedication

Donald F. Auchter

7/18/20 – 8/16/2006



In January 1975, the state legislature created the Glastonbury Probate District. Our community's first Probate Judge was the Honorable Donald F. Auchter. Judge Auchter served Glastonbury and the Connecticut Probate Assembly with great distinction for more than 15 years before his retirement in 1990.

At a memorial service for Judge Auchter at the First Church of Christ Congregational the Reverend Donald L. Hamer, in referring to this predecessor, said, "Don's warmth, genuine sense of compassion, keen intellect, and dedication to the job of Probate Judge earned him the admiration and respect of the citizens of Glastonbury. Those same fine qualities earned him the respect of his fellow probate judges across the State of Connecticut. He served with distinction on the Executive Committee of the Probate Assembly for many years and served as President of that body for the maximum of two terms. Being President of the Probate Assembly—a distinguished body of what was at the time about 134 judges—all of whom were used to being called 'judge'—the job of keeping all of that together could, at times be difficult. But once again, those same qualities that made him a great Judge also made him a great leader, able to harness the energies of competing egos and balance the tensions of competing agendas in a way that led to progress and growth, and continual improvements in the way the probate courts did business."

Don Auchter, with the assistance of his clerk, Allene Scaglia, developed the first manual for probate clerks to establish a uniform set of procedures to be used throughout the different courts.

Don Auchter served his community in other ways as well. Not only was he the first probate judge, he also provided guidance and leadership to the Glastonbury Alcohol and Drug Abuse Council, the Service Club of Glastonbury, Glastonbury's Planning and Zoning, Visiting Nurse Association, Connecticut Council on Adoption, and the Connecticut Probate Assembly.

Don Auchter was a very active participant in the First Church of Christ congregation, where he was a member from 1961 until his move to Rock Hill, South Carolina, in 2004. Don served the church as a deacon as well as the church school superintendent.

The Glastonbury Probate Court has recently been remodeled and now has a hearing room. At the memorial service for Don Auchter, Judge Peter Jay Alter announced that the new hearing room would be dedicated in memory of Judge Auchter. There is a bronze plaque that reads, "Judge Auchter Hearing Room, The Honorable Donald F. Auchter, 1920-2006, Glastonbury's First Probate Judge, 1975-1990. Judge Auchter served Glastonbury with humility, sincerity, commitment, fairness and honor." Judge Alter stated....: I feel honored to continue to serve our residents and follow in the footsteps of Judge Auchter."

Written by Mary M. MacGregor



Table of Contents

Our Town

Facts & Figures	4
Chairwoman's Message	5
Town Manager's Report	6
Probate Court	7
Town Attorney	8
Board of Education	8 - 10

Parks and Recreation

10 - 11

Human Services

Senior Services	11 - 12
Youth and Family Services	12 - 13

Library

Welles-Turner Memorial	13 - 14
South Glastonbury Public	14 - 15
East Glastonbury Public	15

Facilities Maintenance

Facilities Maintenance and Services	16
-------------------------------------	----

Housing Authority

Housing Authority	16 & 21
-------------------	---------

SPECIAL SECTION

Administration	17
Organization Chart	17
2006 Calendar	18
Meeting Schedule	19
Phone Directory	20

Community Development

Community Development	21 - 22
Great Pond Reserve Stewardship Committee	22



Physical Services

Engineering	22 - 23
Highway	23
Fleet Maintenance	23
Water Pollution Control Authority	23

Sanitation

Water Pollution Control Division	24
Refuse Disposal	24

Public Safety

Police Department	25 - 26
Volunteer Fire Department	26 - 27
Civil Preparedness	27 - 28
Ambulance Association	28

Administrative Services

Administrative Services	29
Board of Finance	29
Financial Administration	29
Accounting	29
Property Assessment	29
Revenue Collection	29 - 30
Town Clerk	30

Human Resources

Human Resources	30
-----------------	----

Financial Highlights

Income Statement	31
Balance Sheet	32

Town Officials

Elected and Appointed	33 - 34
-----------------------	---------

Town Map

Inside Back Cover

Our Town Facts & Figures

Location

Glastonbury is located ten miles southeast of Hartford, southerly of Route 3 and easterly of the Connecticut River and Interstate 91. It is served by the Hartford County Regional Planning Agency and the Capitol Region Council of Governments.

Area

52.5 square miles, 33,600 acres.

Population

Approximately 32,985

Land Use

Principally residential (approximately 60% of land area) with suburban to rural densities, geographically compact commercial/employment district (approximately 15%) and significant open space comprising of water company, State forest and Town lands (25%).

Form of Government

Town Council, Town Manager, Board of Finance.

Town Hall

2155 Main Street
Glastonbury, Connecticut 06033
Located one quarter mile south of Hebron Avenue on the west side of Main Street.

Tax Rate

34.0 mills July 2006

Number of Voting Districts

Eight

Net Grand List

On October 1, 2003
\$2,910,520,190

State Representatives

Sonya Googins (R)
240-8700

Christopher Stone (D)
240-0400

State Senator

Mary Ann Handley (D)
240-8600

U.S. Congressman

Rob Simmons (R)
886-0139

John Larson (D)
278-8888

U.S. Senators

Joseph Lieberman (D)
240-3566

Christopher Dodd (D)
240-3470

Town Government

Town Manager
Richard J. Johnson

Town Council
Susan Karp, Chairman
Whit C. Osgood, Vice Chairman
Carol H. Ahlschlager
Kurt P. Cavanaugh
Marti Curtiss
Walter J. Cusson
Kevin P. Graff
Thomas J. Kehoe
Barbara Wagner



Glastonbury Town Council

(Front Row): Barbara C. Wagner, Susan Karp, Carolyn M. Treiss, Carol H. Ahlschlager, and Marti Curtiss
(Back row): Richard J. Johnson, Thomas J. Kehoe, Kurt P. Cavanaugh, Stewart Beckett III, and Whit C. Osgood.



Our Town

Message from the Chairwoman

Dear Residents,

The Town of Glastonbury completed another successful and productive year. We continue to respond to the needs of our residents by providing excellent town services, outstanding educational opportunities, appropriate commercial development, improved recreational facilities and a very strong financial position. These achievements and the ongoing efforts of our dedicated staff and volunteers continue to distinguish our town as an excellent place to live, work and raise a family.

This year we saw the continuation and successful completion of many projects as well as the initiation of improvements that will serve you for many years to come. The new elementary school and the high school renovations proceed on schedule for a 2007 completion. The Riverfront Community Center continues to welcome residents of all ages with expanded services and extensive community use. Our commitment to land acquisition and preservation remains strong as we successfully purchased over 200 acres of land working in cooperation with residents and community groups.

Construction of the Riverfront Park has begun after a successful referendum this past spring. The efforts of many volunteers, the dedication of our staff, the generosity of many athletic groups and the support of our state government have yielded an excellent project that will be completed in the Spring of 2007. The park will provide recreational opportunities and a link to

the Connecticut River and our downtown area. New businesses and improvements emerge in our town center and we look forward to a thorough review of the Plan of Conservation and Development to ensure the best land use decisions. The Gateway corporate park continues to grow providing additional services to our residents. We have maintained our AAA bond rating, distinguishing Glastonbury in the state and the country.

From large projects to every day operations, we are proud of the cooperative efforts that have led to the best results for you. We will continue to work together and seek regional and state collaboration to provide the most effective solutions. We are successful due in large part to the many talented professionals and volunteers who give so much time to our community. I extend my sincere thanks to all. I am confident that with your input, talent and support we will continue the Glastonbury tradition of excellence and success. It is truly my privilege to work with you.

Sincerely,

A handwritten signature in blue ink that reads "Susan Karp". The signature is written in a cursive, flowing style.

Susan Karp
Chairwoman, Glastonbury Town Council



Our Town

Town Manager's Report



Richard J. Johnson, Town Manager

Dear Glastonbury Resident,

The successes and accomplishments of the past year continue the tradition of excellence in Glastonbury. I am pleased to have this opportunity to highlight several as follows.

- Land acquisition continues to be a high priority. With the assistance of State grant funding and contributions from The Nature Conservancy, Glastonbury acquired and preserved approximately 235 acres.
- Initial construction of Riverfront Park improvements is underway. This project off Welles Street provides for a variety of outdoor recreation opportunities and improves the drainage channel between Main Street and the Connecticut River. Community donations and grants to date total approximately \$1.2 million to reduce Town costs. A spring 2007 grand opening is planned.
- The Town closed on sale of approximately 11 acres of the town-owned Gateway property for construction of 75,000 square feet of Class A medical office buildings. Construction is underway with all buildings expected to be complete and in use by 2008. The sale and development plan is consistent with the Town's long term strategy for this property.
- Glastonbury was one of the State's first communities to join the Community Clean Energy Program. For every 100 residential and business properties joining the program, Glastonbury will receive a 1 kw solar energy system. These solar panels will be installed at the high school Science wing. Glastonbury currently has the 3rd highest participation rate among the 20+ Connecticut Clean Energy communities.
- Energy conservation and use of alternative energy sources is a high priority. Recent successes include the transition to 80/20 bio-diesel for fleet vehicles and equipment, purchase of electric generation through a state-wide purchasing consortium to reduce costs and achieve cost predictability, design of new buildings and renovations to achieve energy conservation goals and quality for significant energy conservation rebates through CL&P, independent energy audit of Town buildings to identify the cost benefit of ongoing energy efficiency improvements,

and experimental use of nitrogen for fleet tires to achieve greater fuel efficiency.

- Work on the high school renovation and addition project, and new elementary school construction is well underway with both projects on schedule for completion in spring/summer 2007.
- Standard & Poor's reaffirmed the Town's AAA bond rating. The Government Finance Officers Association again awarded Glastonbury the Distinguished Budget Presentation and Certificate of Excellence in Financial Reporting. Fiscal year 2006 ended with a \$3.68 million gain on operation from the sale of Gateway land and continued operating efficiencies.

As documented throughout this report, efforts are ongoing to provide the highest level of responsive and effective municipal services in a cost efficient manner. There are countless examples of such improvements implemented throughout the year. This focus will continue as part of the Town's organizational culture.

The coming year will see completion of the new elementary school, high school renovations and additions, and the Riverfront Park project. Ongoing projects will include open space acquisition, sale and development of the Gateway property, proposed adaptive reuse of the Academy complex, and a focus on the Town Center from a traffic, walkability and economic development perspective.

As I conclude this report, I want to express my sincere thanks and appreciation to the Town staff, whose hard work and dedication make the programs, services and successes described herein possible. As always, my thanks and appreciation to the Town Council and all those who volunteer their time and talents to help make Glastonbury "a great place to live, learn, work and do business."

Sincerely,

Richard J. Johnson
Town Manager

Our Town Probate Court

I am sad to report that the first Judge of this Court, Judge Donald F. Auchter, who faithfully served the residents of Glastonbury for 15 years before retiring in 1990, passed away at his home in South Carolina.

In October there was a memorial service at the First Church of Christ Congregation where Judge Auchter also faithfully served. Many of the Judge's friends and family came to pay tribute to this amazing man. During the service, former Judge, now the Reverend Donald Hamer and I paid homage to Judge Auchter and also informed the Auchter family that the Court's new hearing room is dedicated to the Town's first Probate Judge. The bronze plaque reads: Judge Auchter Hearing Room. The Honorable Donald F. Auchter, 1920 – 2006, Glastonbury's first Probate Judge, 1975-1990, Judge Auchter served Glastonbury with humility, sincerity, commitment, fairness and honor.

While working with the Town Manager and the Facilities Department regarding the needs of the court in respect to remodeling, one of the items I stressed was the need to have an area large enough to hold hearings as well as being mindful for the need for privacy. The Judge Auchter Hearing Room meets the community's needs for the foreseeable future.

The court has gone through other changes. Every clerk now has a dedicated work station with much needed storage. All the Court's files are now centrally located within the court in fire-proof filing cabinets freeing up the Town Clerk's vault. As much as the footprint did not change, there is more room in the Court. I invite you to stop by to see the new court.

Thanks to the tireless efforts of the Town's facilities department the transition was a very smooth one.

Decedent's Estates, 138; Adoptions, 22; Guardianships, 20; Custody, 6; Conservatorship, 23; Persons with Mental Retardation, 7, Name Changes, 25 totaling 241 New Cases. I presided over 260 hearings; the court closed 153 Cases.

Beginning in 2007, all persons traveling by air between the United States, Canada, Mexico, the Caribbean, Bermuda, Central and South America are required to have a valid passport. Due to this change with the Department of State, our passport volume increased by 35%. In 2006, we processed 1,735 passport applications.

The clerks continue to attend seminars to increase their knowledge of the workings of the court and the changes to probate laws. Last year, the clerks attended fifteen such meetings. As Judge, I



Pictured (below), from left to right, are Patricia M. Kepler, Mary M. MacGregor, Judge Peter Jay Alter, and Esther Buffington.

attend each Probate Assembly meeting held at various locations across the state. I attended two sessions led by David Boone, Director of the Health Department, and other professionals regarding the Pandemic Flu and how such an epidemic could affect our community. As Judge, I have the authority to quarantine sections of the town if the need were to arise.

The court expanded its hours by keeping the Court open one evening a week until 7 p.m. This expansion of hours has proved to be very beneficial. Every Tuesday, since inception, we have served residents.

During the past two years, as Probate Judge for Glastonbury, I have emphasized the importance of Advanced Planning documents as a way for people to be certain that their wishes are followed in the event of illness or infirmity. I have spoken at every opportunity encouraging people to take this important step.

As of October 1, 2006, new legislation became effective making advanced planning easier and more comprehensive. The new act replaces the office of "health care agent" with that of "health care representative," having much broader authority.

Please feel free to contact the Glastonbury Probate Court for a copy of this new law. As with any legal document, I encourage everyone to seek out competent legal advice.

I published an article in the Glastonbury Life entitled, "When a Power of Attorney May Not Be Enough," which addressed the difference of Power of Attorney and Conservator and the accountability of the two. A copy of this article is available at the Court.

Let me close in saying that it continues to be my privilege to serve as our community's Probate Judge. I thank you for your continued support and faith in my abilities to serve as your judge. I have had the benefit of knowing the two previous judges and will continue their tradition of making every effort to serve with sincerity, commitment, fairness and honor.

Our Town Town Attorney



Shipman & Goodwin LLP has had another exciting year serving as Glastonbury's Town Attorney. We have advised and represented the Town in a wide range of transactional and litigation matters over the past year.

Shipman & Goodwin LLP has continued to present training sessions for Town officials and employees on the Code of Ethics Ordinance and to assist the Ethics Commission in implementing the Ordinance. We have been actively involved in the Town's purchases of

property and development rights for open space. We continue to advise the Town on other real estate, environmental and land use matters, including leasing issues, assessing the environmental condition of properties in Town and assisting in the revision and interpretation of land use regulations. Shipman & Goodwin LLP has also reviewed Town contracts for legality as related to labor, the acquisition of various products and services for the Town relating to computer software, telecommunications, energy, and architectural, construction and other services. We have represented the Town

before administrative agencies and courts on Freedom of Information Act matters, property tax appeals, and various land use appeals. We have consulted with the Town on labor contract matters and provided advice and counsel on other employment and pension issues.

The attorneys at Shipman & Goodwin LLP wish to thank the Glastonbury officials and staff for the great working relationship we have developed over the past two years. We always enjoy working with the Town and look forward to our continued relationship.

Our Town Board of Education

The Glastonbury Public School System has had a long history of educational excellence, one in which our community takes pride. Our system is recognized across the state for a commitment to excellence and high levels of student achievement. What distinguishes our school system from others is our dedication to planning, our ability to set priorities, and our willingness to support initiatives that benefit students. Our mission is to educate students and prepare them in a safe, supportive, and dynamic environment to think critically, communicate effectively, and act ethically and responsibly. We believe in the value of education for every child. We challenge each student to reach his or her potential and become a productive citizen of our technological, diverse, and global community. Through community-wide input and involvement we have developed the goals to direct our efforts. The information below illustrates evidence of our commitment to maintain a strong, quality program for Glastonbury students.

Second Generation Strategic Plan

We have recently completed the next generation of our Strategic Plan. The following three goals will be our focus during the next five years:

Goal 1: Continue to promote high achievement for both students and staff by improving PreK-12 instruction through:

- ongoing curriculum development, integration and refinement

- critical integration of technology
- district-wide assessment of learning

Goal 2: Develop a comprehensive and responsive district communication plan that will facilitate:

- effective exchange and communication among parents, students, faculty and administration
- effective communication between district and community at large

- meaningful and relevant communication among all constituents

Goal 3: Strengthen staff development and professional collaboration in order to support:

- the attainment of the Glastonbury mission and goals
- the recruitment and retention of outstanding educators and staff
- the improvement of student achievement





Noteworthy Accomplishments in 2005-2006

During the past year, the following accomplishments were noteworthy: the development of a new strategic plan that will carry us through 2011; redistricting of our elementary school students for the 2007-2008 school year; the adoption of a new financial management system; budget presentation and adoption that allows us to maintain successful programs; continued renovation of Glastonbury High School; continued construction of the new elementary school with an opening date for the 2007-2008 school year; grants that bring additional resources and educational opportunities to our students; and a new technology plan that focuses on technology integration into all classes.

Quality Staff

Perhaps the most important internal, system-wide trend is the changing face of our teaching and administrative staff. A key component to quality education is the development and maintenance of quality staff, and we are unwavering in searching for the best teaching talent. Approximately 30 % of the teaching staff has been in Glastonbury for three years or less. All potential candidates go through a rigorous and demanding interview and selection process and frequently comment that they chose Glastonbury after meeting our impressive teaching and administrative staff. The value of high quality teachers and administrators is indisputable. We will continue through university partnerships, outreach efforts

and recruitment to secure the best for Glastonbury.

We value the partnerships we continue to forge with parents, as these are crucial to our success. We thank our parent community for their ongoing active involvement and support.

Glastonbury High School Graduate Plans – Class of 2006

Over 93% of the Class of 2006 enrolled in either 2 or 4-year colleges or universities. Over 35% of the Class of 2006 enrolled in 2 or 4-year colleges/universities within Connecticut. Top schools our students will attend: Boston College, Boston University, Brown, Cornell, Dartmouth, Georgetown, Harvard, Holy Cross, Johns Hopkins, New York University, Trinity College, Tufts, and Williams.

Participation in Interscholastic Sports

Approximately 46% of Glastonbury High School students participated in the athletic program during the 2005-06 school year with a total of 1,539 athletes participating in the overall program. This total also reflects students who have participated in two and three sports. Ten of our teams were Central Connecticut Conference Champions and 156 varsity athletes were named to the All-Conference Team. In addition, 434 varsity athletes were named to the All-Academic Team for earning a varsity letter while maintaining a 3.0 grade point average or higher during their season. Forty-five varsity athletes were recognized as All-State in their sport and



16 varsity athletes were recognized as All-New England. We also had three athletes receive All-American honors. Three teams were Class LL State Champions: Girls' Cross Country, Boys' Soccer and Girls' Indoor Track.

Graduation Requirements for the Class of 2006

The Board of Education approved graduation requirements for the Class of 2006 which include the completion of 21 credits and defined student performance expectations in reading, writing, math problem solving and requirements related to technology.

Test Results

92% of Glastonbury High School's 2006 graduates took the SATs (Scholastic Aptitude Tests) and this rate of participation was far above the state and national averages. GHS Verbal and Math SAT averages continue to be above state and national means. The Verbal score of 544 and the Mathematics score of 571 are also far higher than the Connecticut and the national average.

On both the 2006 Connecticut Mastery Tests (grades 3-8) and the 2006 Connecticut Academic Performance Test (grade 10), Glastonbury students also scored well above the state and above the averages for our District Reference Group (DRG, other Connecticut school districts with similar demographics).

(continued on page 10)

Our Town

Board of Education *(continued)*



GHS Addition/Renovation Project Underway

The addition and renovation project at Glastonbury High School is underway. This complex \$48 million dollar project (\$36 million after reimbursement) is on target to be completed in June 2007.

Magnet School Programs

The East Hartford-Glastonbury K-5 Magnet School, one of the first magnet schools in the state, has maintained its strong program of science, technology and global studies with a focus on the language and culture of Japan; 112 students from Glastonbury are attending this school. Future plans call for building a new facility located on the grounds of Rentschler Field in East Hartford.

Two Rivers Middle Magnet School, a five town science and technology magnet, located in East Hartford, has over 75 Glastonbury sixth, seventh, and eighth graders attending this unique program.

At the high school level, Glastonbury students attend the Greater Hartford Academy of Math and Science, the Greater Hartford Academy of the Arts, and Great Path Academy at Manchester Community College. Each of the magnet schools offers a different and unique option for Glastonbury students.

Safety and Security

Keeping our children safe and ensuring that we have the knowledge, tools, and capacity to protect them in the face

of crisis, natural disaster or acts of terrorism is a shared responsibility. A comprehensive Crisis Management Plan and Incident Protocol Guidelines are in place. Both Glastonbury High School and Smith Middle School have security guards that monitor anyone entering the building. Also, our elementary schools were equipped with security cameras that allow us to monitor both interior and exterior areas of the schools. In addition, our buses are equipped with a device called a Child Safety Reminder that requires drivers to walk to the back of the bus to disengage a buzzer before they are able to remove the keys from the ignition.

Parks and Recreation

The Parks and Recreation Department and Fine Arts Commission continue to provide a wide variety of recreation opportunities, which work to enhance the quality of life in Glastonbury. Town sponsored programs, public parks and open space work together to meet the diverse needs and interests of the community and its members.

Several park improvements were initiated this year. With support from Glastonbury Partners in Planting and local merchants, streetscape improvements, including tree planting and park benches, were completed in South Glastonbury. The swimming pool at Addison Park received a new plaster finish and other incidental repairs needed to restore the pool to a like new condition. With support from the Parent-Teacher Organization, playground improvements were made to the Gideon-Welles School. The Glastonbury Lacrosse Club provided the funding needed to install a practice wall at the high school.

The picnic pavilion at J.B. Williams Park, which hosts approximately 130 groups per year, received a new roof. The Department continued its multi-year program to replace and upgrade spectator seating at all athletic fields in Town parks. The Town's Highway Division repaved the parking lot at Grange Pool.

In May, Glastonbury voters approved a \$4.25 million dollar referendum needed to fund construction of a new riverfront park off Welles Street. Construction began in June and the park is expected to open for public use in May 2007. The project borders the Connecticut River and includes areas for both active and passive recreation, as well as, conservation. Active facilities include a fairgrounds, walking trails, a lighted baseball field, athletic fields, and a covered picnic pavilion. State and Federal grants, as well as, contributions from the National Fish & Wildlife Foundation and several local

sports groups offset approximately \$1.2 million dollars of the project cost.

With funding provided by the George H. C. Ensworth Foundation, all five of the Town owned aquatic facilities were equipped with Automatic External Defibrillators. Aquatic staff were trained by the American Red Cross in their use. This measure is part of the Town's continued efforts to provide safe, well supervised, fun swimming facilities for children and families.

Special events continued to be one of the highlights of the year. They are many and varied. The Fine Arts Commission hosted a performance of "Mozart in May" with the Hartford Symphony Orchestra. Over 350 people attended the concert, which was funded with donations from more than thirty local businesses and individual donors. Santa's Run, the 3.5 mile road race co-sponsored with Quality Name

Plate and New Alliance Bank, continues to be a well attended family holiday tradition in Glastonbury. The annual Fishing Derby, Hershey's Track & Field Program, Senior Citizen's Picnic, Town Band Concerts, Children's Holiday Performances, school vacation ski trips, and Kid's Dog Show continue to be well received.

Other programs, for residents of all ages, are as varied as the interests of the town's population. The outdoor swimming areas, Eastbury Pond and Addison and Grange pools, continue to be popular destinations during the dog days of summer. The Summer Music Series, co-sponsored with the Chamber of Commerce, makes the Hubbard Green the place to be on Wednesday evenings in July. Numerous competitive sports opportunities are offered for youth and adults alike including tennis lessons, junior team tennis, swim team, youth basketball, co-ed soccer, men's, women's and co-ed softball, gymnastics and volleyball. Opportunities that contribute to a healthy lifestyle include aqua fitness, adult exercise class, aerobics, pilates, yoga, senior citizen exercise and fun runs. The Town's comprehensive, year-round program offers a wide variety of activities of interest to residents.

As the Town's population continues to grow, the department is challenged to meet the increased demand for recreation services. Virtually all of the Town's youth sports programs have expressed interest in having additional lighted athletic fields. The indoor pool at the high school is fully programmed and used to its maximum potential. Additional park land is needed for the development of active recreation areas. Access to the Connecticut

River for recreation continues to be a high priority for Glastonbury residents. The new community center has helped to meet the need for indoor programming space especially during mid-week daytime hours. The new tennis courts at Glastonbury High School, including four with lights, significantly improve playing conditions and have resulted in a resurgence in interest in tennis.

As budget pressures mount, the Department continues to be diligent in its efforts to provide programs and services in a cost effective manner. Increased emphasis is also being placed on revenue generating activities while keeping programs affordable for all.

Looking ahead, several projects are planned for implementation in the next 12-18 months. Efforts are being made to install lights at the basketball courts in Welles Park. The Center Green is slated to receive new park benches, trash receptacles, and upgraded lighting. Working with the Bicycle Advisory Committee, plans are being developed to systematically improve conditions and facilities for cycling and to make Glastonbury a bicycle friendly community. A new access drive and parking lot will be built at the 80 acre Blackledge Falls open space parcel. The running track at Glastonbury High School is also scheduled for renovation.

Many thanks to the dedicated staff, boards and commissions, community service clubs, private businesses, donors, and volunteers, whose contributions make Glastonbury a great place to live, learn, work and do business.

Human Services

Senior Services

The Senior and Community Services Division of the Human Services department operates as a community focal point for the coordination of multi-purpose services and programs, for persons living independently or with families in the community. The Senior and Community Services Division services individuals of all ages in order to promote independence, personal enrichment, and an enhanced quality of life. Offices are located in the new Riverfront Community Center.

The principal programs, services, and activities offered by this division are:

- Outreach Social Work Services to Seniors, Disabled Adults and Financially at Risk Residents
- Senior Center Programs
- Dial-A-Ride Transportation
- Senior Lunch Program
- Friendship Circle Social Model Day Program
- Extensive Outreach & Program Volunteer Opportunities
- Tax Relief
- Energy Assistance
- Holiday Giving Programs
- Back-to-School Supplies & Services
- Substance Abuse Prevention Services



Senior Services provides a wide variety of services and programs to Glastonbury's older residents. The Dial-A-Ride program provides accessible in-town transportation for seniors and disabled adults. The department also offers seniors a nutritious lunch program Monday through Friday. The Senior Outreach Program helps frail and homebound seniors access the information and services needed to remain independent in the community. The Senior Center offers a variety of town sponsored cultural, recreational and wellness programs at the Riverfront Community Center. The Friendship Circle is a program for frail seniors which offers stimulating mental and physical activities in a structured, supervised setting. Information on services and programs for seniors is available through a monthly

(continued on page 12)

Human Services

Senior Services *(continued)*

informational newsletter, The Sharing Tree, which is distributed to approximately 2000 Glastonbury households.

The Senior Services Volunteer Program helps the community face the challenge of providing necessary services with limited resources. Approximately 130 volunteers donate their time and talents to offer a wide of services that benefit the Glastonbury seniors.

Social Services strives to promote the well-being, self-sufficiency and quality of life among Glastonbury residents by administering various programs and initiatives which provide individuals and families with the necessary support and opportunities to realize their fullest potential.

Substance Abuse Prevention Services monitors and coordinates community substance abuse prevention and intervention initiatives and programs. This includes youth prevention and education programs, parent/adult substance abuse education programs, and senior education programs. The Prevention Coordinator is available to provide professional development and education to community groups upon request.

Youth & Family Services

Glastonbury Youth and Family Services coordinates, supports and delivers services to youth and families in the Glastonbury community with children and young adults under the age of twenty-one. Our mission is to serve Glastonbury youth and families by striving to exceed client expectations by providing positive development opportunities to empower youth and their families. Youth and Family Services has three program areas: Clinical Services, Creative Experiences, and Outreach Services.

This year Clinical Services provided counseling services to 853 individuals and 359 families. Throughout the year the staff conducted ten student groups at both the elementary and secondary school levels; offered four Parent Education and Support groups for parents of elementary aged children and parents of adolescents; and provided twenty-three classroom presentations on a variety of positive youth development topics. In addition, over three hundred parents participated in the Parenting Education Forum series.

Creative Experiences offered three dramatic presentations throughout the year: The Music Man the summer production, Seussical the Musical the fall production, and The Jungle Book



Some of the Departments accomplishments of the past fiscal year include the following:

- Provided Outreach Social Work Services to 1008 Glastonbury residents and their families. This program assists individuals in need to maintain their physical, social and financial independence by providing information, referral, and assistance.
- Provided 18, 030 rides to senior and disabled adults through the Dial-A-Ride program.
- Increased participation in Senior Center Programming by 31% by offering new programs and initiatives.
- Provided food and toys to 105 families and more than 180 children through the Thanksgiving Basket and Holiday Toy Shop Programs.
- Procured a 35 passenger bus for shared use by the Senior Center, Teen Center and Youth and Family Service Programs.
- Began the National Senior Center Accreditation Self-Assessment Process.



the spring production performed by the Peter Pan Players. Other programs coordinated by Creative Experiences are: Youth Services Action Group (YSAG) which is a service learning opportunity involving students in grades 7-12 that meets weekly to plan and execute community service projects; Pass It On is the student run community television program; and Odyssey of the Mind is a creative problem solving team experience. Odyssey of the Mind competed on the state level and one of the teams qualified and competed on the national level in Iowa.

Outreach Services provided on-site programming at Glastonbury High School, Smith Middle School, and Welles Village. The outreach workers provided short term individual support services to students at the middle and high school during the school year. In addition, numerous informal contacts were made in the school cafeteria and hallways.

The High School Outreach Services worked with adolescents through various programs such as Peer Education, Peer Support, Peer Mediation, and Time Management. The Middle School Outreach Services worked with adolescents and children through Peer Mediation, Ropes Program, After-School Programming, and the Coffee House. Coffee House is done in collaboration with Parks and Recreation and GLAD.

The summer of 2005 marked the 15th year for the W.A.C.Y. Program. Welles Village Activities Council for Youth is a summer activity and leadership training program for youth



ages 7–18 living in Welles Village. Twenty–three teenagers participated in the leadership training program and thirty-three, 7-12 year olds participated in the summer activity program. The program continues to be a collaborative effort between Youth and Family Services, the Housing Authority and Police Department – Youth Division. Daily activities included arts and crafts, sports, and games. Field trips were offered and consisted of: Wickham Park, Ron-O-Roll, Laser Quest, Nature’s Art, and Connecticut Golf Land.

Library

Welles-Turner Memorial Library

The Welles-Turner Memorial Library offers a variety of materials, programs and services to inform educate and enrich members of the community. The collection contains approximately 150,000 print and non-print items. This year we introduced downloadable audio books. These are books that can be downloaded to a computer and listened to on the computer; transferred to a MP3 player or, in some cases, be burned to a CD. In its first year, users downloaded 1086 titles.

ICONN (www.iconn.org) is the statewide digital library available, at no charge, to all stat residents at their local academic, public or school libraries. A valid library card from the Welles-Turner Memorial Library allows you access to the ICONN databases from your home computer. This year ICONN added the Hartford Courant, 1764-1922. This source has been popular with users, especially those interested in genealogy. The Library also added CT Grantmakers Online to its collection of online databases.

During the year the Library held 399 programs for adults, children and teens and 12,714 people attended. The ever popular Summer Reading Program continued to attract participants. This year’s program, “Get Caught Re (a) d Handed” saw 1,292 children participate, a 10% increase over 2004. Our Children’s Librarians encouraged all parents to make a New Year’s Resolution to read 20 minutes a day to their child or children. Every Child Ready to Read @ Your Library was a program

(continued on page 14)

Telephone: 860-652-7719

www.wtmlib.com

Library Hours:

Sunday:	1 – 5 p.m.
<small>(Sunday after Labor Day – Sunday before Memorial Day)</small>	
Monday, Tuesday, Thursday:	9 a.m. – 9 p.m.
Wednesday:	Noon – 9 p.m.
Friday:	9 a.m. – 6 p.m.
Saturday:	9 a.m. – 5 p.m.





Library

Welles Turner Public Library *(continued)*

designed for parents to help their two- and three-year olds become aware of and comfortable with books and language. The 14-Carrot Reading Club encouraged families with children, ages 1-7 to read aloud.

The Library Director serves as liaison to the Library Board, Friends of the Library and the Second Century Fund. The Library Board is an advisory board that works with the Library Director to help plan library programs and services. This year the Board reviewed and revised its by-laws so that they better match the Board's duties.

The Friends of the Library and the Second Century Fund are non-profit 501c (3) organizations whose goals are to support the library mission and goals. Friends typically fund programs and services that are not in the Town budget, such as the popular Museum Pass Program. The Second Century Fund is saving for long term capital expenditures.

Other accomplishments include:

- Circulated 573,919 items, the third largest circulation among the 27 CONNECT Consortium members. Circulation increased 3% over last year's 555,403.
- Handled 16,909 reference requests, up 3% over last year's 16,333.
- Celebrated the culture and literature of Canada as part of the World of Words program with the Connecticut Center for the Book.
- Offered Book News, four online newsletters (Book Club Picks, New Fiction, New Non-Fiction and Mystery Books) for users to subscribe to or visit via our web page (www.wtmlib.com).



South Glastonbury Public Library

Telephone: 860-633-4793

www.southglastonburylibrary.org/Homepage.htm

Library Hours:

Sunday:	2 – 4 p.m.
Monday – Friday:	1:30 – 3 p.m.
Monday, Wednesday, Thursday:	7 – 8:30 p.m.

The South Glastonbury Public Library, incorporated in 1926, is located in a former Methodist church building at 80 High Street. It is the oldest church building in Glastonbury. Dating to 1828, it is on the National Register of Historic Places. The building housed an active congregation of mill workers until it disbanded in 1843. It later served as a church for black workers and was the site of many abolitionist meetings. The building eventually became privately owned and was turned over to the newly incorporated library board in 1926.

The Library has a large adult collection, featuring both fiction and non-fiction in both regular and large print. We have received a grant from the Ensworth Foundation to substantially increase the large print collection. There is an emphasis on acquiring first novels. There is also an excellent collection of books for preschoolers through teen years.

(continued on next page)

In addition to a varied periodical collection, the Library houses two very special groupings of books. One is the Kinne collection, which contains books on Early American arts and crafts. The other is the Hodge collection, which has an emphasis on all aspects of nature. These books are available for four-week loans.

A women's' book discussion group meets on the first Tuesday evening of the months October – June. A children's' story hour is planned for Friday mornings throughout the school year.

The Library is staffed by volunteers and is overseen by a Board of Trustees who manage policy and finances.

The Library is funded by an annual grant from the Town of Glastonbury and an annual fund drive for private gifts and donations.

East Glastonbury Public Library

The East Glastonbury Library, affectionately known to patrons as “Little Red”, was incorporated in 1960 as a Connecticut non-profit corporation. The Library was founded by the parents of the children who attended the newly opened Eastbury Elementary School to provide a library for the school.

The Library, which is located next to the school, was built in 1889, as a one-room schoolhouse. In 1900 a second room and foundation were added. Eight grades were taught in the school, four grades and one teacher in each room. The Library continued as a school until the Eastbury School was built. For a brief time it was used by the Vo-Ag Department of the High School.



In 2002 the building was declared a Historic Building by the State of Connecticut.

Little Red has grown over the years into a full service library serving the whole community of Glastonbury. It is completely staffed by volunteers and funded by the Library Board of Directors, an active Friends group, an annual grant from the Town of Glastonbury and by private gifts and donations. The Friends group holds a used book sale every fall and a Book, Bake and Bric-a-Brac Sale every spring to raise money for the expressed purpose of purchasing books for the Library.

The front room is home to a collection of Adult fiction and non-fiction, magazines and local newspapers. Most best selling books are available along with (to name a few) travel books, cookbooks, reference books, biographies, and Large Print books. There is also a small collection of video and audiotapes. The second room houses an extensive collection of children's books. Many classes from the Eastbury School use the Library on a weekly basis.

The East Glastonbury Library sponsors a book study group and a children's story hour. There are also special displays mounted in the foyer. Many different collections have been featured there. Presently the Glastonbury Historical Society has been displaying some of their collections.

Telephone: 860-633-5637

1389 Neipsic Road

Library Hours:

Monday: 1 – 4 p.m., 7 – 9 p.m.

Tuesday: 9 a.m. – 4 p.m.

Thursday: 9 a.m. – 4 p.m., 7 – 9 p.m.





John Gilroy, Senior Building Maintainer, installs a new suspended ceiling in Town Hall.



New elementary school steel erection.

Facilities Maintenance Maintenance & Services

The Facilities Maintenance and Services Department is responsible for operations, maintenance, management, and construction of over 270,000 square feet of facilities as well as management of design and construction of all municipal building projects. The Department performs or manages preventive maintenance, custodial services, and project design and construction management using skilled in-house staff and contracted service providers. The Department also manages over \$1 million in utility and communication accounts for all Town facilities.

In addition, the Department is responsible for bidding, managing, and inspecting a variety of contracted services and vendors for all Town agencies.

All public building projects are managed by the Department, which also provides staff support to the Public Buildings Commission.

Highlights from the previous year include:

- Cut the ribbon on a new 21,000 square foot Riverfront Community Center.
- Cut the ribbon on a new 60,000 square foot science wing addition to the Glastonbury High School and continued renovations to the existing High School building.
- Broke ground on the new elementary school.
- Installed an emergency generator at the Parks & Recreation facility.
- Managed the Town's first ever competitive procurement of over 12,000 MWh of electricity for the Town and Board of Education.
- Managed the improvements to the Smith Middle School auditorium.

- Renovated the Gideon Welles historic home to accept commercial tenants.
- Managed replacements and improvements to the Town's video production system to improve telecasts of Town Council and Board of Education meetings.

Housing Authority

The Housing Authority currently administers a total of 445 assisted dwelling units within the Town of Glastonbury. These include the following housing developments: Welles Village, Center Village, Village Green, Herbert T. Clark House Congregate and Assisted Living, and Section 8.

In addition, the Housing Authority also serves as the administering agency for the Town of Glastonbury's Moderate Price Housing program, and staff for the Town's Fair Rent Commission.

Recent Activities

During the past year, the Housing Authority has pursued a number of projects. These have included:

- The Housing Authority received \$355,327 in funding from the U.S. Department of Housing and Urban Development Capital Grant Program for modernization work in Welles Village. This funding will be used to continue renovations to bathrooms and kitchens in vacant units.

(continued on page 21)

SPECIAL PULL-OUT SECTION

TOWN OF GLASTONBURY Organizational Chart

Town Manager

Richard J. Johnson

Chief of Police

Thomas J. Sweeney

Community Development Director

Kenith E. Leslie

Director of Finance and Administrative Services

Diane M. Waldron

Director of Human Resources

Patricia C. Washington

Town Engineer, Manager of Physical Services

Daniel A. Pennington

Director of Building Services

Herbert L. Schwind

Assessor

David L. Valente

Assistant Town Engineer

Stephen A. Braun

Building Official

Edward P. Pietrycha

Civil Preparedness

Robert F. DiBella

Collector of Revenue

Norman Z. Rosow

Controller

Nina R. Cousins

Director of Health

David W. Boone

Director of Parks and Recreation

Raymond E. Purtell

Fire Chief

Matthew G. Nelson

Fire Marshal

Christopher N. Siwy

Fleet Superintendent

Thomas O. Tierney

Physical Services Operations Manager

Eric E. Hood

Housing Authority Director

Neil Griffin

Director of Human Services

Patricia R. Schneider

Library Director

Barbara J. Bailey

Information Systems & Technology Coordinator

Robert L. Ashton

Purchasing Agent

Mary F. Visone

Superintendent of Buildings

David Sacchitella

Superintendent of Sanitation

Michael J. Bisi

Town Attorney

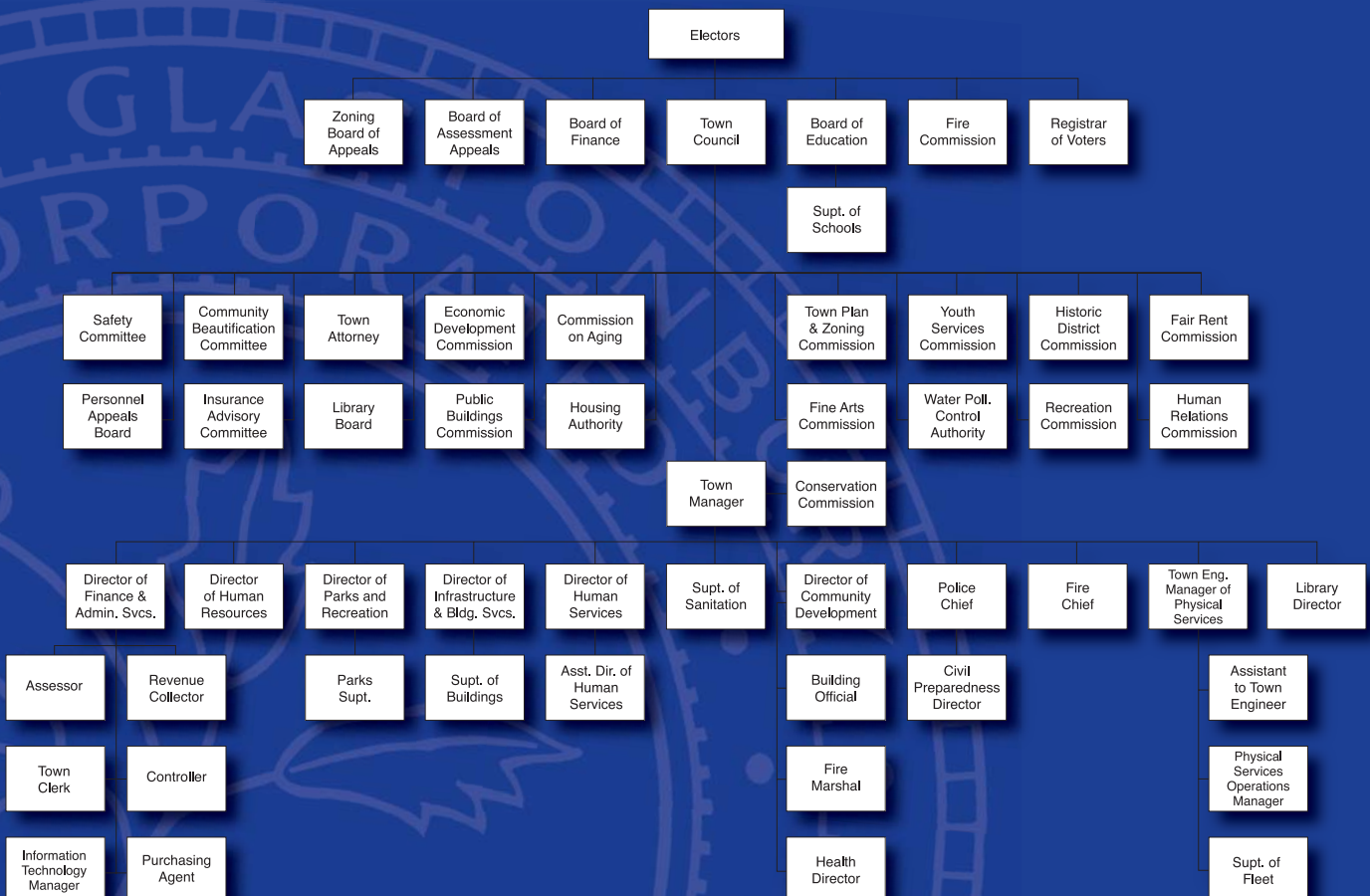
Bruce Chudwick

Town Clerk

Joyce P. Mascena

Assistant Director of Human Services

Ann Grabowski



SPECIAL PULL-OUT SECTION

Dates to Remember

Financial Administration

January 25 Annual Town Meeting
March 21 Final Budget Hearing

Police Department

October 1 Annual Burglar Alarm Registration

Property Assessment

February 20 Deadline for filing written appeals to Board of Assessment Appeals
October 1 Annual Assessment Date: Property owners listed in Grand List
November 1 Last day to file business personal property declarations with assessor

Refuse Disposal

April 7 Extended operating hours for Transfer Station ONLY during Day Light Savings time begin, Wednesdays 7:00 a.m - 7:00 p.m.
September 15 Modified Day Light Savings hours, Wednesdays 7:00 a.m. - 6:00 p.m.
October 27 Last Wednesday of Transfer Station extended operating hours

Revenue Collection

January 1 Second installment of 2005 Grand List taxes become due. The taxes include real estate, personal property and Supplemental motor vehicles.
July 1 The first installment of 2006 Grand List taxes become due.
November 1 Sewer Use bills become due.

NOTE: Credit card payments are accepted at www.officialpayments.com. A drop-off box for payments is located in the circle by the flag poles at Town Hall.

Social Services

February 2 Homeowners' and Additional Veterans' Tax Relief Programs begin
March Camp CONNRI and Channel 3 Country Camp applications available
April 30 Last day to apply for Energy Assistance benefits
May 14 Last day to apply for Homeowners' Tax Relief
May 17 Renters' Tax Relief Program begins
May 31 Last day to apply for Operation Fuel benefits
July & Aug. Back-To-School promotional programs
September 15 Last day to apply for Renters' Tax Relief.
October 1 Last day to apply for Additional Veterans' Tax Relief benefits.
October 15 Energy Assistance application period begins.
November 18 Thanksgiving food baskets distributed (tentative).
December 1 Operation Fuel application period begins.
December 13, 14 & 15 Annual Toy Shop (tentative).

Sanitation

2007 Waste Collections April 14, April 28, May 12, June 9, June 23, September 8, September 29, October 13, October 27

Town Clerk

April 21 Fishing season opens
June 1 Dog Licenses become available for the next fiscal year
September 11 Primary for the November 6 election if a challenge is filed
October 5 Absentee ballots for November election become available in Town Clerk's office
TBD Hunting season opens
October 30 Last day to register to vote in order to vote in the November election (except for those who move to Town, turn age 18, or become a U.S. Citizen after this date).
November 6 Election Day

Water Pollution Control Division

November 1 Sewer Use payments due.

Youth & Family Services

February 28 Charity Cabaret, Gideon Welles School, 7-10PM
June 4 "Destination Imagination", Gideon Welles School, 7:30PM
August 12, 13, 14 Summer Show, TBA, Smith Middle School

SPECIAL PULL-OUT SECTION

Community Events 2007

Apple Harvest Festival

October 14 & 15

Welles-Turner Memorial Library Events

National Library Week
 Book Sale
 Library Card Sign Up Month
 Book Sale
 Banned Book Week
 Teen Read Week
 Children's Book Week

April 2-8
 May 19, 9 a.m. – 5 p.m.
 September
 September 8, 9 a.m. – 5 p.m.
 September 23-30
 October 22-28
 November 13-19

Fun Runs (Tuesday evenings)

6:30 p.m. GHS – June 27, July 11, July 18, July 25, August 1, August 8, August 15

Kid's Pooch Pageant

July 10, 6:00 p.m. Hubbard Green - Pre-registration required

Santa's Run 3.5 Mile Run

December 3, Noon GHS (Snowdate Sunday, December 10)

Senior Picnic

Hubbard Green

August 4 (tentative) Festivities begin at 9:30 a.m.

Summer Music Series

Hubbard Green

Wednesdays 7:00 p.m. – July 5, July 12, July 19, July 26

Town Band Concert

Hubbard Green

Sundays 7:00 p.m. – July 9, July 16, July 23, July 30

Boards and Commissions Meeting Schedule

Town Council	2nd and 4th Tuesdays	Town Council Chambers
Board of Education	2nd and 4th Mondays	Town Council Chambers or GHS Library
Board of Finance	3rd Tuesday	Town Hall Meeting Room, 2nd Floor
Town Plan & Zoning Commission	1st and 3rd Tuesdays	Town Council Chambers
Board of Assessment Appeals	As required	Town Hall
Building Board of Appeals	As required	Town Hall
Commission on Aging	1st Monday	Senior Center, 17 Hebron Avenue, 1st Floor
Community Beautification	2nd Wednesday	Town Hall Meeting Room, 2nd Floor
Conservation Commission	2nd and 4th Thursdays	Town Council Chambers
Economic Development	1st Monday	Office of Community Development, Town Hall, 3rd Floor
Fair Rent Commission	As required	Herbert T. Clark House, 45 Canione Road
Fine Arts Commission	2nd Monday	Glastonbury High School, Room 136
Fire Commission	1st Thursday	Fire Company #1, 2825 Main Street
Historic District Commission	As required	Town Hall
Housing Code of Appeals	As required	Town Hall
Human Relations Commission	Quarterly	Town Hall Lunch Room, 2nd Floor
Insurance Advisory Committee	Quarterly	Engineering Conference Room, Town Hall, 3rd Floor
Public Buildings Commission	1st Wednesday	Town Hall Meeting Room, 2nd Floor
Public Housing Authority	3rd Wednesday	Herbert T. Clark House, 45 Canione Road
Recreation Commission	3rd Thursday	Parks and Recreation, 1086 New London Turnpike
Safety Committee	4th Monday	Town Hall Meeting Room, 2nd Floor
Water Pollution Control Authority	2nd and 4th Wednesdays	Town Council Chambers
Welles-Turner Library Board	2nd Monday	Welles-Turner Memorial Library, 2407 Main Street
Youth and Family Services Commission	2nd Wednesday	Youth and Family Services, 321 Hubbard
Zoning Board of Appeals	1st Monday	Town Council Chambers

NOTE: Please contact the Town Clerk's Office at 652-7616 to confirm dates, times and locations as some schedules change due to holidays.

SPECIAL PULL-OUT SECTION

Town Departments 2007

Town Departments

For Information

General Information
Accounts Payable
Administration
Assessment
Assessment
Birth Certificates
Building Permits
Bulky Waste Disposal
Children's Department
Civil Preparedness
Community Center (Riverfront)
Death Certificates
Deeds
Demolition Permits
Dial-A-Ride
Dog Licenses
Dog & Animal Problems
Drainage Problems
Electrical Permits
Elderly Municipal Agent
Energy/Fuel Assistance
Engineering
Facilities Services
Financial Administration
Financial/Medical Assistance
Fire Chief
Fire Marshal
Food Bank
Health Matters
Highways
Housing Authority Comm.
Inland Wetlands
Landfill Permits
Libraries

Marriage Licenses
Nursing
Passport Information
Personnel
Planning
Plumbing & Heat Permits
Police (General Information)
Probate Court
Recreation
Recreation Schedules/Cancellations
Refuse Disposal/Recycling
Refuse Disposal/Recycling
Registration of Voters
Salvation Army
Sanitary Inspection
Sewer Department/
Water Pollution Control
Sewer Use Bills
Snow Removal & Streets
Social Services
Taxes
Taxes
Tax Relief Program
Trees
Voting
Youth & Family Services

Call

Information Center
Accounting
Town Manager
Assessor
Info Line
Town Clerk
Building Office
Sanitation
Welles-Turner Library
Civil Preparedness
Community Center
Town Clerk
Town Clerk
Building Office
Senior Services
Town Clerk
Animal Control Officer
Engineering
Building Office
Senior Services
Social Services
Engineering
Facilities
Administrative Services
Social Services
Fire Department
Fire Marshal
Social Services
Health Department
Physical Services Operation Manager
Housing Authority
Community Development
Engineering
Welles-Turner
S. Glastonbury
E. Glastonbury
Town Clerk
Visiting Nurse Assoc.
Probate
Human Resources
Community Development
Building Office
Police Department
Probate Clerk/Judge
Recreation Department
Info Line
Info Line
Office
Registrar of Voters
Social Services
Health Department
Sanitation
Sanitation
Highway Superintendent
Social Services
Collector of Revenue
Info Line
Social Services
Parks and Recreation
Registrar of Voters
Youth & Family Services

Phone

652-7710
652-7595
652-7500
652-7600
652-7606
652-7616
652-7521
652-7772
652-7718
652-7576
652-7638
652-7616
652-7616
652-7521
652-7643
652-7616
633-7227
652-7735
652-7521
652-7638
652-7638
652-7735
652-7703
652-7586
652-7638
652-7555
652-7526
652-7638
652-7534
652-7749
652-7568
652-7510
652-7735
652-7719
633-4793
633-5637
652-7616
633-3521
652-7630
652-7501
652-7510
652-7521
633-8301
652-7629
652-7679
652-7689
652-7790
652-7772
652-7627
652-7638
652-7534
652-7772
652-7772
652-7749
652-7638
652-7614
652-7606
652-7638
652-7679
652-7627
652-7660

Board of Education

Central Office

General Information
Superintendent of Schools
Assistant Superintendent
Assistant Superintendent
Business Manager

Curriculum

Art
Athletics and Clubs
Career/Vocational Education
English/Language Arts
Foreign Language/ELL
Mathematics
Music
Physical/Health Education
Science
School Counseling
History/Social Science
Pupil Services
Support Programs and Services
Facilities & Food Services
Technology
Transportation Coordinator

Glastonbury High School
Principal

Smith Middle School
Principal

Gideon Welles School
Principal

Buttonball School
Principal

Eastbury School
Principal

Hebron Avenue School
Principal

Hopewell School
Principal

Naubuc School
Principal

East Hartford/Glastonbury Magnet School
Principal

Two Rivers Middle Magnet

Contact Person

Alan Bookman
Christine Brown
Jeffrey Kitching
Sharon Smith

Director

Daniel Roach
Barbara Startup
Gary Nolf
Richard Dlugos
Rita Oleksak
Michelle Watson
Patricia Lignelli
Ann Marie Colebrook
Fred R. Myers
Edward C. Gregorski
Deborah Willard
Linda Roberts
Karen Olah
Brad Devlin
Brian Czaplak
Angelo Balesano

Matthew Dunbar
652-7200x1025

Donna Schilke
652-7040

Frances Maynard
652-7803

Patricia DaSilva
652-7279

Sheryl Harriman
652-7858

Linda Provost
652-7875

Kathleen Carter
652-7897

Kent Hurlburt
652-7918

Glen Peterson
622-5400

Thomas Scarice
509-3607

Town Web Site

www.glastonbury-ct.gov

**FIRE, POLICE & EMERGENCY
Routine Calls to Police Department**

**DIAL 911
633-8301**



Community Development

Community Development

Housing Authority *(continued)*

- The Housing Authority recently completed bathroom and kitchen renovations on ten units in Welles Village.
- Continuation of the Welles Activity Council for Youth (W.A.C.Y.), in conjunction with the Town's Department of Youth and Family Services and Police Department.
- The Herbert T. Clark House Auxiliary raised over \$1200 through the State of Connecticut's Neighborhood Assistance program, and from private donations. The Auxiliary is a way for the Glastonbury community to provide needed support for our housing programs, since most operations are not subsidized.

Schedule of Meetings

The Housing Authority of the Town of Glastonbury meets the third Wednesday of the month at the Main Office, 25 Risley Road, Glastonbury, CT 06033 at 5:45 P.M. The meetings for 2007 are as follows:

January 17, 2007
 February 21, 2007
 March 21, 2007
 April 18, 2007
 May 16, 2007
 June 20, 2007
 July 18, 2007 (Annual Meeting)
 August 15, 2007
 September 19, 2007
 October 17, 2007
 November 21, 2007
 December 19, 2007

As a vibrant and maturing Capitol District suburb, a couple of new development venues were introduced during the year that are worthy of mention. First, in response to an expanding 55+ age profile, several "active adult" projects were approved for construction. Second, a transformation not seen since the "early 1970s urban renewal" was underway in the heart of the Central Business District. Known as Eric Town Square this major commercial development reflects the ongoing economic vitality of the community as well as strong investment confidence by the private sector.

As the Town's land use management agency, the Department is comprised of 4 operating divisions: Building Inspection, Fire Marshal, Health, and Planning/Environmental Management. Ongoing services include code compliance and inspections, zoning enforcement, fire prevention and investigation, water well and septic system inspection and approval, food licensing and inspection, environmental management, and economic development. Application management and professional advisory services are provided to Town boards and commissions, including the Town Plan and Zoning Commission, Conservation Commission, Zoning Board of Appeals, Economic Development Commission, and Historic District Commission.

Also noteworthy were the following:

- The Health Department hosted a major regional training exercise to test the quality and readiness of a unified mass incident response.

(continued on page 22)



Eric Town Square under construction.



Eastern Boulevard under construction.

Community Development Community Development *(continued)*

- The Town Plan and Zoning Commission completed a series of detailed public workshops in conjunction with the 10 year update to the Plan of Conservation and Development. This document will be utilized as a policy guide by boards, commissions, and residents during the next 10 years.
- Development alternatives were studied in conjunction with the Town's economic development lands known as Gateway.
- Construction began on a new regional level medical campus on former Town-owned property on Eastern Boulevard. Total development will result in 75,000 sq. ft. of Class A office.
- Significant open space acquisitions were completed adjacent to the Meshomasic State Forest south of Route 2.

Great Pond Stewardship Committee

The Great Pond Preserve located off Great Pond Road in South Glastonbury is a special natural area managed by the Great Pond Preserve Stewardship Committee.

The summer of 2006 was somewhat unusual as the Pond did not dry up: It remained 80% full of water all season long.

The Committee had some success at the annual Spring Workday in fighting the non-native, invasive Oriental Bittersweet: Painting the stumps after cutting the bittersweet led to no resprouting.

Also a native beetle was discovered to be eating the invasive Purple Loosestrife, and is the subject of a scientific study.

The Committee also approved a contribution toward the Town's purchase of the 21.5 acre Reardon property. This acquisition protects a substantial portion of Grindle Brook and its watershed, which feeds Great Pond, and will allow for the continued vigilant stewardship in preserving the Pond.

Physical Services

The Physical Services Department is responsible for the maintenance and inventory of the Town's roadways and infrastructure. This includes existing systems as well as additions proposed through subdivision and site development.

Engineering

The Engineering Division performs design review of streets, traffic control systems, storm and sanitary sewers, sidewalks, and other public improvements proposed in conjunction with land development. Recommendations are made to appropriate Boards and Commissions of the Town. Following approval, the Division inspects the construction of the public improvements to assure conformance with Town standards.

The Division performs routine inspection of existing Town roads, drainage systems, and traffic control signs and signals. Public inquiries and comments are investigated to address potential problems or defects. Road, storm drainage, and sanitary sewer conditions and maintenance history data are maintained in the Road Manager data network. An ongoing program of obtaining and recording traffic counts and spot speed data is conducted by staff and pertinent data is shared with the Police Department.

Engineering is responsible for in-house design of public improvements or coordination with private consultants when used in conjunction with Town projects. The Division provides civil engineering services for all Town Departments and provides technical and clerical support to the Water Pollution Control Authority.

In addition, staff maintains property line, easement, and other pertinent mapping data in the Town's web-accessible and newly renovated Geographic Information System (GIS).

Some recent projects include:

- Construction oversight and administration of the Main Street Reconstruction Project.
- Design and construction of several sidewalk projects.
- A2 land survey of parcels obtained via the Town's successful Property Acquisition Program.

Highway

The Highway Division is responsible for maintenance, repair, and construction relative to streets, drainage systems, sanitary sewers, traffic controls, sidewalks, and other features of the Town's infrastructure system. Snow and ice removal and joint operation of the Bulky Waste sand and gravel facility are also primary functions. Overall maintenance and construction is accomplished through the use of in-house labor and equipment working in conjunction with contractual entities.

The Winter of 2005/2006 ushered in a new mode of operation relative to snow and ice removal. Introduction and use of a treated road salt product was quite successful and led to drastic reductions in sand application rates. Corresponding Spring clean-up efforts were similarly reduced and environmental benefits were realized via elimination of sand deposition in receiving water bodies.

Other traditional Highway Division functions such as street sweeping, catch basin cleaning, roadside mowing, and roadway surface treatment were performed with positive results. The paving program in particular utilized a process not previously employed. A product known as Micropaving was successfully applied as a means of effectively maintaining roadway infrastructure at a very reasonable cost.

Fleet Maintenance

The Fleet Maintenance Division's responsibilities include the repair and maintenance of all Town vehicles. This includes a wide variety of vehicles ranging from general purpose cars and police cruisers to school buses, fire apparatus, heavy trucks, and construction equipment. These services also include the installation of special equipment in the new police cruisers. Included within the scope of these services are the very substantial efforts of repair technicians during snow and ice events. The rough duty encountered by plow trucks during snow storms results in a need for quick and knowledgeable mechanical diagnosis and repair in order to keep trucks on the road.

The Division prepares bid specifications for all Physical Services vehicle purchases and reviews specifications for all other Departments. Other Division responsibilities include garage

environmental compliance and maintenance of a computerized Fleet Data Program that tracks maintenance activities and associated costs, thereby allowing for prudent decision-making when considering new equipment purchases. In addition, Vehicle Maintenance staff periodically coordinates public sale of obsolete parts and equipment to ensure maximum salvage values.

Fleet Maintenance staff has also begun active involvement in researching and applying fuel conservation technologies as they apply to the Town's fleet.

Water Pollution Control Authority

The Water Pollution Control Authority (WPCA) is responsible for reviewing and approving sanitary sewer connections and expansions, and for assessing future needs of the system.

The Water Pollution Control Authority levied assessments in the amount of \$410,631.88 in conjunction with their responsibility to recover the cost of sanitary sewer construction. Of this amount, \$378,158.20 was a result of new construction with the balance due to expansion or connection of existing facilities. During the past fiscal year, 74 new connections were made to the sewer system.

It is noted that the WPCA reviewed and approved the construction of the sanitary sewer systems currently serving the following age-restricted developments: Uplands Way Extension PAD – Active Adult Community, Fairfield Village PAD, Adena's Walk PAD, and East Carriage Drive Extension PAD. These projects serve 148 new units.

The engineering design of the Wastewater Treatment Plant is complete. Review by the WPCA has been ongoing through the design process. The approval by the local boards and commissions is also complete and final review by the Department of Environmental Protection is expected in early Fall. The WPCA also continues to review and adjust the sewer use rate structure in order to offset costs for the Plant rehabilitation.





Sanitation Water Pollution Control Division

The Water Pollution Control Division provides the continuous collection and treatment of sanitary sewage generated from 100 miles of sanitary sewers and eight remote pumping stations. The system serves approximately 18,000 people within the Town of Glastonbury in compliance with State and Federal regulations. In addition, this Division administers Sewer Use rates, ordinances and provides staff support to the Water Pollution Control Authority.

The following provides highlights of statistics for fiscal year 2005-2006.

- 923.06 million gallons of wastewater were processed averaging 2.53 million gallons per day.
- 3,250,000 gallons or 1,247,402 pounds of sludge were processed and disposed of, averaging 3,418 pounds per day.
- 1,377,216 kilowatt hours of electricity was consumed at the Treatment Plant for the 24 hour per day operation, this is an average of 3,773 kilowatt hours per day.
- Water Pollution Control Facility Upgrade: Completed design work for the major upgrade project to replace old and worn inefficient equipment and to meet new State of Connecticut, Department of Environmental Protection (DEP) overall water quality to the Connecticut River and Long Island Sound. DEP review and approval of the design is expected to be completed in the fall of 2006 so we may proceed with the bidding phase.
- Emergency repairs to a broken force main pipe at the Nutmeg Pump Station were successfully completed. This station has been in continuous operation since 1965.

Refuse Disposal Division

The Refuse Disposal Division operates solid waste disposal, recycling facilities and administers permits for private collectors, ordinances and operating guidelines for waste disposal facility users.

The following provides an overview of statistical data for the Refuse Disposal operation.

- 3,249 tons of Refuse was disposed of at the Transfer Station, 3,726 tons of Bulky Waste at the Bulky Waste facility and 4,404 tons of material was recycled.
- 37.6% of solid waste Town wide was recycled.
- 643 residents utilized the Regional Household Hazardous Waste Collection Facility during the year.
- Continued enhancements to our leaf composting program included fine screening of our finished compost producing a more refined organic soil amendment. This material is provided for sale at the Transfer Station and Bulky Waste Facility. Unscreened compost is also available at no cost.



Public Safety Police Department

The Glastonbury Police Department is a nationally accredited law enforcement agency committed to providing service to our community in a professional and sensitive manner. In 1986, the Department was the first law enforcement agency in Connecticut to be accredited. In 2004, it was the first to achieve its fifth re-accreditation.

The Department consists of 59 sworn officers and 16 civilian support personnel. Patrol officers maintain a visible police presence and 7 day/24 hour response capability to incidents occurring in Town. The primary mission of the Patrol Division is to prevent and/or eliminate public safety problems. These officers are the primary contact between the Department and the public. They provide the critical first response to all crime, traffic and medical emergencies occurring throughout the Town. The nature of the work requires these officers to be highly trained and to flexibly readjust to handle a wide variety of complex situations.

While the Town's population has continued to grow, the level of cases handled by the Department has remained fairly constant for the past several years. During FY 05/06, the Department handled 16,825 cases. This was a decrease of 1.1% over the prior year. The major elements of that caseload are broken down as follows:

Traffic	5,966
Services	7,071
Criminal	4,642

Among these cases, in a normal year, the Department's personnel will respond to about 1300 calls for medical assistance and 1000 calls involving animal related problems.

The Town's crime rate has historically been one of the lowest in the State of Connecticut. While the Town's population has grown by over 31% since 1985, the rate of serious crime has declined by 46.2% during the same period. In November 2004, the Town was recognized by Hartford Magazine as having the lowest crime rate in the Capitol Region.

The Department places great emphasis on issues pertaining to youth. Full time School Resource Officers are assigned to the Middle and High Schools. In addition to enhancing school safety, the officers are in daily contact with youth. While they may occasionally take enforcement action, their primary focus is on preventing problems for youth and discouraging their involvement with crime and/or substance abuse.

Youth officers teach the DARE curriculum to all students in the sixth grade. Instruction on internet safety is presented to fifth grade students and anti-bullying programs are implemented in the fourth grade and middle school. A youth officer is assigned part time to the FBI's Innocent Images Task Force. That officer's investigative efforts have been highly successful in arresting and prosecuting Internet pedophiles.

The Department maintains a high priority emphasis of drunk-driving enforcement. Consistent with its strong emphasis on prevention, the Department maintains a proactive posture in addressing the problems of underage drinking and substance abuse. This is accomplished by the continuing checks of establishments selling alcoholic beverage and tobacco to ensure compliance with laws governing sales to minors. High priority is maintained to enforcing the Town's Alcohol Ordinance against possession by a minor, or hosting parties where alcohol is served to minors.

During FY 05/06, the Department led efforts for a comprehensive upgrade of the Town's public safety communications equipment.

(continued on page 26)

Public Safety

Police Department *(continued)*

A referendum to finance that work was overwhelmingly endorsed by the voters. The Motorola Corporation was contracted to build the new radio system which will provide multi site simulcast dispatching for the police, fire and emergency management services. This multi site broadcasting represents a quantum upgrade in the Town's emergency communication system and it will effectively remedy long standing communication problems created by the Town's very hilly terrain. Accordingly the new radio system will greatly enhance the safety of the public and emergency responders. The new system will be fully operational in the Fall.

During the fiscal year the Police Department acquired added software to improve the investigation of computer crimes and also to clean up and enhance images on video tape evidence. Automated protocols to support emergency medical dispatching were installed at a third dispatch console. Power backup capabilities were added to the Communications Center to prevent disruption of operation during a transition to emergency power.



Volunteer Fire Department

The Glastonbury Volunteer Fire Department is comprised of 132 dedicated men and women. Twenty four hours a day, seven days a week, these brave volunteers are ready to answer your call for help. The members of the Glastonbury Volunteer Fire Department leave the comfort of their homes at any moment's notice to respond to emergency incidents and to help their neighbors deal with their serious problems involving fire or

rescue services. There are four fire stations, one modern fire training facility, and twenty fire department vehicles that respond to 900 calls for service each year to cover the 52 square miles in town.

The Glastonbury Volunteer Fire Department is very proud of our role in the areas of fire prevention and public education. In the past year the department's fire prevention and education division, with the help of all the volunteer firefighters, has provided services at 56 events. From the school children to the seniors, from the scouting programs to our civic organizations, the Glastonbury Volunteer Fire Department has been there to help.

The Glastonbury Fire Company Organizations are an integral part of their community. They provide food vendor services, fire prevention demonstrations, and public education opportunities at nearly every major town event. They are active at the Apple Festival, the Memorial Day Parade, the "Walk for Life" to defeat cancer, the Special Olympics, and the Nayaug Connecticut River Canoe Races as well as many other events in your neighborhood.

The department is also proud of our accomplishments in the training division. Each new volunteer firefighter goes through 150 hours of rigorous and challenging training to become active members. This training includes certification by the Connecticut Fire Academy to the standards of the National Fire Protection Association for the level of Firefighter One. New members must also receive training in hazardous materials response, incident command systems, homeland security weapons of mass destruction, vehicle rescue, and the department's standard operating procedures. All active members then must meet a standard of attending a minimum of twelve training drills each year to maintain their skills. The majority of the Glastonbury Volunteer Fire Department members also upgrade their training certification levels during their careers. The department has many members nationally certified as Fire Service Instructors, Fire Engine and Aerial Apparatus Operators, Emergency Medical Technicians, Incident Safety Officers, and Fire Officers.

The fire department took delivery of two new Fire Engines in 2006. The new apparatus have greatly enhanced operational and safety features that will allow the firefighters of Glastonbury to better serve the community. Engine 21 is assigned to Company Two in South Glastonbury and Engine 32 is assigned to Company Three in East Glastonbury.

New firehouse sirens were installed in 2006 at Companies One and Two. Now all four fire stations have capabilities for fire

Public Safety

Volunteer Fire Department *(continued)*

siren activations, emergency management warnings, and verbal message announcements.

The new radio system that was installed this year for the police, fire, ambulance, emergency management, and public works has greatly improved the critical function of radio communications throughout the Town of Glastonbury. The new radio system has increased the safety of our emergency response personnel and now also ensures that the public receives the best possible service.

In response to the threat of possible attacks against America, the fire department is continuing to upgrade our regional and statewide response capabilities. The department participates in the Statewide Fire/Rescue Disaster Plan with the implementation of Task Force # 57. Task Force # 57 consists of three Engine Companies, two Ladder Companies, one Rescue Company, a Command Car, and 26 fire personnel from six surrounding communities that are available to respond to major incidents. Task Force # 57 was successfully deployed to the Windsor Locks Mill fire on July 17, 2006. Fire apparatus and firefighters from the fire departments of Manchester, Manchester Eighth Utilities, Colchester, South Windsor, and Glastonbury responded as a team from Glastonbury Company One. Due to the strong operational and command capabilities of the Task Force, all the fire departments that had been fighting the fire overnight were relieved and were allowed to go home and get some rest.

The department's Fire Police Division is another source of great pride for the Glastonbury Volunteer Fire Department. The Fire Police members keep the firefighters safe at each emergency incident and assist the public to continue on their way without interfering in the fire department's operations.

The Fire Cadet program continues to flourish under the direction of several dedicated volunteer fire department advisors. The program for youth ages 14-18 provides the department with well trained firefighters at the age of 18. The fire cadets have the opportunity to explore the fire service and learn the important life skills of teamwork, discipline, and leadership.

The Glastonbury Volunteer Fire Department is always looking to recruit new members who share their desire to serve their community and would like to learn exciting new information and skills. If you are interested in this rewarding opportunity to become part of a great organization of compassionate neighbors, please call the Fire Chief's office at 652-7555.



Civil Preparedness

The Office of Civil Preparedness (Emergency Management) coordinates all emergency activities in times of man-made or natural disasters for the Town of Glastonbury.

The Office is active in planning for manpower, equipment and community needs by updating information, regulations and training, as well as conducting checks of materials and equipment, including the Town warning sirens.

In disaster situations, the office updates information and instructions to Citizens via its disaster information telephone number 652-7578, as well as its radio station, WPII600 at 1570 AM, which is heard in Glastonbury, 24 hours a day, seven days a week. This station also provides citizens with timely public safety information concerning road and emergency situations.

It also maintains a state-of-the-art mobile telecommunications van that is equipped to function as a backup system should the Town's main system fail. This van can also be used in the field to assist with 'command and control' operations in major incident situations. This van contains the I-TAC I-CALL 800 MHz Interoperable System. The Glastonbury Emergency Management Director is considered as the founder of this Interoperable System, by State Public Safety Officials.

The Civil Preparedness staff has trained in 'radiological monitoring' through the Connecticut Office of Emergency Management. It has radiological monitoring devices to meet peacetime homeland security concerns.

The staff also has the 'Hurricane', United States Government hurricane-warning program with which it uses to monitor major weather events.

The Department is committed to continuing its involvement in Glastonbury Boy Scouting in Emergency Management projects, so as to assist with the development of youth, who are our future leaders.

(continued on page 28)

Public Safety

Civil Preparedness *(continued)*

Certain elements of training must be completed by every town and city public safety responders in the U.S. which includes all Town of Glastonbury organizations that may have a role in preventing, preparing for, responding to, or recovering from an incident. The required courses have been completed to meet the FY 2006 NIMS (National Incident Command System) implementation.

A sky watching lecture was held by the National Oceanic & Atmosphere Administration (N. O. A. A.). Weather Forecasters at the Academy School sponsored by the Glastonbury Office of Emergency Management. 103 persons attended from Glastonbury and surrounding towns. This program trains individuals to qualify as a SKYWARN spotter to enable them to recognize severe weather conditions and how to report these conditions to the National Weather Service. This information provided by these trained spotters provides more timely and accurate local warnings for tornadoes, severe thunderstorms and flash floods. These spotter warnings have been of significant assistance to the U. S. Weather Service. Participants were given ID tags which contain appropriate phone numbers for notification of the National Weather Service of severe weather conditions.

StormReady – The Town of Glastonbury is in the process being certified as the only town in this local area to be storm ready as defined by the N. O. A. A., National Weather Service. The process of certifications involved a detailed application describing the methods of determining that severe weather conditions, which may be expected and the method of warning the population of the severity of the conditions, are anticipated. As an example as part of the warning system, the Town Manager, Superintendent of Schools, Fire Chief, Police Dispatchers, School Bus Manager, Emergency Management Office, and others, have NOAA radios that warn of impending severe weather conditions. These town warning systems have been determined to be in compliance, with N.O.A.A. This requirement also includes that adequate planning documentation define the various areas of responsibility and the procedure for declaring an emergency. The final step in this process is a review by Federal and State Officials to verify the application. This Storm Ready designation allows insurance companies to consider lower fire and flood insurance in Glastonbury.

The Director has completed a course in “Critical Incident Management and Command Post Operations for Executive and Command Personnel”, conducted by the State of Connecticut Police Academy and is now certified in that methodology.

Public Safety

Volunteer Ambulance

The Glastonbury Volunteer Ambulance Association, GVAA, was established in 1957 and is committed to providing emergency ambulance service to the community 24 hours a day, 7 days a week, 52 weeks a year. More than 2,400 calls have been logged this year. Currently 2 “Super Duty” ambulances operate from our facility at 2112 Main Street (behind the police department). Each ambulance has a 2 or 3 person crew who in addition to basic emergency procedures can provide intravenous fluid therapy, advanced airway management, cardiac defibrillation and oxygen therapy.

GVAA members are state certified EMT’s of varying levels and receive monthly training to update skills and keep abreast of new and ever changing requirements in their field. Members come from Glastonbury and the surrounding towns volunteering both their time and expertise to those in need. Typically GVAA members do three 12-hour shifts a month. When not responding to calls, crew members are at the ambulance quarters attending to the equipment, building and supplies.

Members pride themselves on providing the highest quality, most compassionate, and most dedicated emergency medical care to the residents and visitors of Glastonbury. GVAA also offers First Aid and CPR training to members of the community and surrounding towns.

GVAA is always looking for dedicated members to be a part of our team. To learn more about becoming a volunteer or about our organization, or to inquire about community based training please call 633-6554. You can also reach us at www.GVAA.org.



Administrative Services

The Administrative Services Department is responsible for the preparation of budgets, accounting and financial reporting, land records, property assessment, and the collection of taxes and sewer use fees. In addition, it oversees the acquisition of goods and services, insurance procurement, legal services, cash management and debt administration, voter registration management and coordination of computer services.

Board of Finance

The Board of Finance is a bipartisan Board which operates in partnership with the Town Council and the Board of Education. In its advisory role, the Board recommends an annual budget to the Town Council and recommends and/or authorizes transfers among and between accounts and funds during the fiscal year. By direct authority the Board establishes the annual mill rate of taxation after reviewing the final budget approved by the Town Council.

Financial Administration

This office coordinates the preparation of the operating and capital improvement budgets for the Town Manager; works with the Board of Finance to review financial reports and make recommendations as needed to the Town Council and Town Manager; serves as staff liaison to the Insurance Advisory Committee in risk analysis and annual insurance renewals; coordinates procurement of goods and services and provides Information Technology services for all Town departments.

- Maintained its AAA designation with Standard's & Poor and Aa1 designation with Moody's Investment Services for the Town, which is based on the Town's financial condition.
- Retained new insurance agent of record responsible for procuring the Town's liability and workers' compensation insurance coverage

Accounting

The Accounting Division is responsible for providing complete and accurate financial information, in the proper format, on a timely basis. This division prepares the year-end comprehensive annual financial report and processes employee payroll, payables, and receivables. The division is also responsible for managing the



Town's investments to maximize interest earnings in all funds and performing internal audit procedures to help ensure that proper controls and procedures are being followed.

- Received the Certificate of Excellence in Financial Reporting for the period ended June 30, 2005, awarded by the Government Finance Officers Association following an extensive review process.
- Initiated contract for an actuarial valuation of the Town's liability for post-employment benefits other than pensions

Property Assessment

The Property Assessment Division administers an ad valorem tax program in compliance with State Statutes. It compiles the annual Grand List of taxable and exempt property including the valuation of real estate, motor vehicles and business personal property.

The 2005 Grand List Taxable Grand List totaled \$3,030,822,790, a 2% increase over the previous year.

A total of \$1,338,000 in assessment credits were issued to 43 town farms under the Town's newly adopted Farm Building Exemption program.

Revenue Collection

- Update of figures in last year's revenue collection section. All other information remained the same.
- Taxes and fees for the fiscal year 2005/2006 totaled \$95,892,556.
- Sewer charges and fees totaled \$2,054,541.
- Back taxes collected totaled \$377,560.
- Accomplished a tax collection rate of 99.4% on current levy.

(continued on page 30)



Administrative Services *(continued)*

Town Clerk

The Town Clerk's Office serves as the center for public records for the residents of the community and their government and is responsible for maintaining many public records including, but more limited to, land records, vital statistics, military discharges, notary public registrations, liquor and burial permits, trade name certificates, meeting schedules, notices, agendas and minutes of the numerous boards and commissions, administering elections and issuing various licenses such as dog, sporting, marriage and civil union. Most all of the functions of the office are governed by state statute and town charter, and the office is a major collector of revenue for the State of Connecticut as well as for the Town. In fiscal year 2005/2006, the office collected approximately \$2,580,900 in revenue for the State and \$1,359,800 for the Town consisting of funds relating to conveyance taxes, the historic documents and farmland preservation funds, vital statistics, dog and sporting licenses, land record recordings and other miscellaneous items.

- Commenced with the processing of vital statistics and property map filings on our counter recording system in the spring of 2006.
- In October 2005, completed the inventorying of all existing microfilm and electronic media and continued work on an archival microfilming program for all permanent record filings.
- Qualified for and received a \$12,000 Historic Preservation grant from the State of Connecticut and re-indexed land records back in time to create electronically generated indexes from 1/1/1972 back to 12/31/1962.
- Applied for a \$12,000 Historic Preservation grant from the State of Connecticut to continue the land records re-indexing project, which funds are to be awarded and work is to be continued on the project in fiscal year 2006/2007.



Human Resources

The Human Resources Department is a full service department with the mission of administering a full range of human resources services and programs to the Town's workforce and retirees.

Some of the principal services and activities offered are: recruitment and testing, compensation and classification, employee training and development, labor relations and employee and retirees benefits. The department is also responsible for the Customer Service Center, located on the ground level of Town Hall that provides a range of services to residents and visitors.

Some of the accomplishments for the year were as follows:

- Conducted 35 recruitments and reviewed over 900 applications in an effort to select the best candidates to fill town positions.
- Provided over 28 training sessions and employees' programs with an average of 30 employees per session
- Notarized approximately 400 documents and issued over 850 dump passes at the Customer Service Center
- Completed a comprehensive Compensation Study of all town positions

Some of the sessions served to enhance the employees' knowledge, skills and abilities in job performance in an effort to provide the best service possible to its customers while other opportunities were to assist in keeping our employees healthy and help them to prepare for life in retirement. Some of the opportunities offered were customer service training, team building, taking care of your back, preventing violence and harassment in the workplace, managing your workload with minimum stress, providing top customer service, ethics in the workplace, environmental changes and cultural diversity. The information sessions provided to employees included preparing for retirement, how social security works, my investment opportunities and men and women health issues.

TOWN OF GLASTONBURY

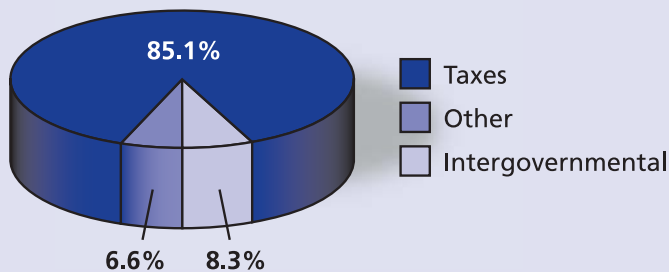
Financials

TOWN OF GLASTONBURY, CONNECTICUT STATEMENT OF REVENUES, EXPENDITURES AND CHANGES IN FUND BALANCE BUDGETARY BASIS – BUDGET AND ACTUAL – GENERAL FUND FOR THE YEAR ENDED JUNE 30, 2006

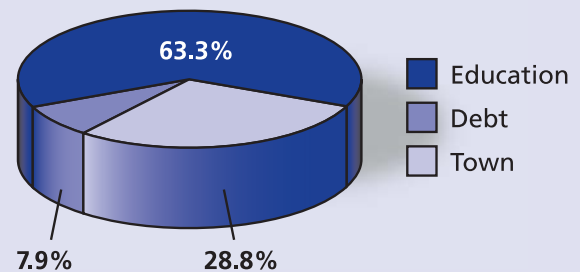
	Budgeted Amounts		Actual	Variance With Final Budget Positive (Negative)
	Original	Final		
REVENUES:				
Property taxes	\$96,059,129	\$96,059,129	\$96,403,227	\$344,098
Licenses and permits	787,900	787,900	1,332,325	544,425
Intergovernmental	5,683,995	5,956,445	7,530,085	1,573,640
Charges for services	2,367,400	2,367,400	2,888,823	521,423
Other revenue	2,453,517	2,453,517	5,183,203	2,729,686
Total revenues	107,351,941	107,624,391	113,337,663	5,713,272
EXPENDITURES:				
Current:				
General government	2,332,401	2,383,401	2,243,732	139,669
Community development	1,676,959	1,676,959	1,636,712	40,247
Administrative services	4,872,581	4,976,274	4,874,536	101,738
Public safety	8,331,251	8,694,262	8,619,276	74,986
Physical services	5,115,455	5,192,090	5,123,058	69,032
Sanitation	2,146,172	2,227,172	2,107,488	119,684
Human services	2,083,315	2,226,039	2,135,477	90,562
Leisure/culture	4,662,318	4,669,335	4,608,890	60,445
Contingency	175,000	50,597	37,994	12,603
Education	67,163,424	68,936,836	68,918,999	17,837
Debt service	8,636,317	8,648,220	8,648,220	0
Total expenditures	107,195,193	109,681,185	108,954,382	726,803
Excess (Deficiency) of Revenues over Expenditures	156,748	(2,056,794)	4,383,281	6,440,075
Other Financing Sources (Uses):				
Transfers in	1,868,252	1,906,252	1,322,991	(583,261)
Transfers out	2,025,000	2,025,000	2,025,000	-
Total other financing sources (uses)	(156,748)	(118,748)	(702,009)	(583,261)
Net Change in Fund Balance	\$ -	\$(2,175,542)	3,681,272	\$5,856,814
Fund Balance at Beginning of Year			10,521,030	
Fund Balance at End of Year			\$14,202,302	

A complete copy of the financial report is available for review at Town Hall.

REVENUES



EXPENDITURES

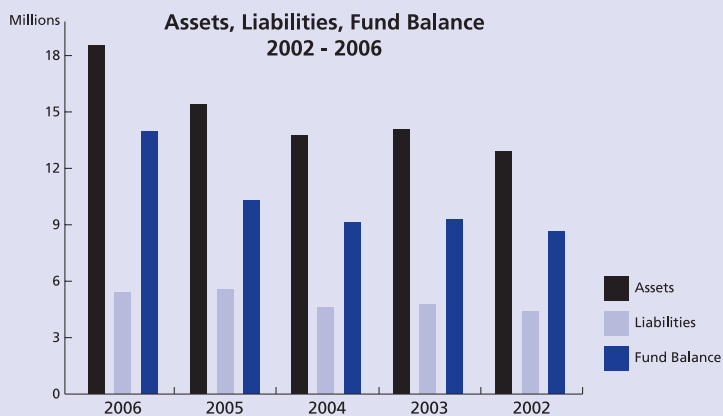


TOWN OF GLASTONBURY

Financials

TOWN OF GLASTONBURY, CONNECTICUT GENERAL FUND – BALANCE SHEET JUNE 30, 2006 WITH COMPARATIVE TOTALS FOR 2005

	2006	2005
ASSETS		
Cash and cash equivalents	\$18,057,764	\$14,765,660
Receivables:		
Property taxes	248,052	406,174
Other	794,894	672,449
Inventory	171,246	168,352
Other assets	26,326	17,526
Total Assets	\$19,298,282	\$16,030,161
LIABILITIES AND FUND BALANCE		
Liabilities:		
Accounts and other payables	\$2,066,104	\$2,594,381
Due to developers for escrow deposits	1,740,234	1,650,520
Due to others for escrow deposits	597,312	479,355
Deferred revenue	692,330	784,875
Total liabilities	5,095,980	5,509,131
Fund Balance:		
Reserved for encumbrances	51,096	240,539
Reserved for inventory	171,246	168,352
Reserved for capital outlay	47,500	15,598
Unreserved:		
Designated for insurance	275,000	275,000
Designated for subsequent year's expenditures	550,000	550,000
Designated for specific purposes	14,776	23,193
Undesignated	13,092,684	9,248,348
Total fund balance	14,202,302	10,521,030
Total Liabilities and Fund Balance	\$19,298,282	\$16,030,161





TOWN OF GLASTONBURY

Town Officials - Prior to November 2006 Election

Board of Education

Lorraine Marchetti
Jeremy Grieveeson
Elizabeth Rogan
Richard C. Brown
Pandora "Pandy" Wohler
Timothy P. Coon
James R. Zeller
Lynn A. Onderko

Board of Finance

Diane L. Northrop
James R. McIntosh
Robert W. Jenkins
Walter F. Hemlock
Constantine Constantine
Peter B. Deich

Board of Assessment Appeals

David Motycka
Robert D. Bowden
Dennis C. Cavanaugh
Bernard J. Herpst
Forbes Warren
Robert F. Vacchelli
Eileen M. Dobensky

Bldg. Board of Appeals/ Code Review Committee

Calvin J. Carini
James W. Dutton
Robert Kaelin
John S. Sardo
Graham Tyrrol

Commission on Aging

William McGaw Jr.
Susanne Dock
Mary Abel
Nancy Kent
Ernest F. Reale
Eva Bowden
Janeen Dolan

Community Beautification Commission

W. Gilbert Wolf
Robert G. Shipman
Donald B. Reid
Linda DeGross
Della Winans
Lewis Middleton
David Flattery

Conservation Commission

Kim McClain
Judy Harper
Dennis McInerney
James Bingham
Gerhard R. Schade
William Patrick
Helen D. Stern

Cox Cable Advisory Council

Patricia Darling
Christopher Fraleigh
Martin Loughlin
Richard C. Brown

Economic Development Commission

Gretchen Deans
Anthony L. Lazzaro, Jr.
Michael Botelho
David M. Hallows
Raymond A. Dolan
Jay Sattler
Caren Kittredge

Ethics Commission

Alexandrina (Sandy) Sergio
Alan R. Spier
Nancy Thomas
Patrick Treacy
Angela Bull
Alternates:
Reginald L. Babcock

Fair Rent Commission

Lucille Jonah
Judith A. Stearns
Allen Karp
Andrea Broder
John C. Hilton
Stephen D. Oppenheim
David Evans

Fine Arts Commission

Doris O'Rourke
Helen Litwin
Dianne Hemlock Grinvalsky
Catherine Carlone
Heather Summers
Sandra MacGregor
Diane Lacy

Fire Commission

Gilbert D. Spencer
James W. Dutton
Rocco N. Fierravanti
Raymond A. Dolan
Arnold H. Higgins
Richard W. French, Jr.

Historic Distric Commission

Mary Lou Barrett
Nanette Navarro
Michael Stassen
Steven Snyder
Dr. Trish Manfredi
Alternates:
Courtney MacDonald
Barbara Theurkauf
Dorothy C. Cameron

Housing Code of Appeals

Nelson C. L. Brown
Kristine Brown
Dr. Michael F. Lepore
W. Michael Low

Human Relations Commission

Susan Sit
Joan Kemble
Patricia A. Darling
John C. Glezen
Virginia Hajek

Incorporators/Free Academy

Richard Mihm
Patricia Saddle mire
John Waterhouse

Insurance Advisory Committee

Robert J. Hager
Stephen J. Ludwig
Ronald E. Palmer
David Hoopes
Thomas Mullaney
Patricia Shea-Lovell
Stephen L. Jones

Greater Hartford Tourism District

Katherine C. Kennedy

Personnel Appeals Board

Elizabeth A. (Betty) McLaughlin
Robert W. Rulevich
Glenda Rose
Richard Vitterelli
Keith Shaw

Public Buildings Commission

Lisbeth Becker
Charles I. Monzeglio
Stephen Shipman
David B. Cox
Suzanne S. Galvin
Liaisons:
Gus Constantine

Public Housing Authority

Donald H. Foberg
James F. Noonan
Richard H. Inman
Zelda Lessne
Judith Jaskulski

Recreation Commission

Allyson Ravosa
Michael C. Collins
Dennis Kerrigan
Brian Summers
Michael H. Clinton
H. James Boice

Safety Committee

Brian Ellis
Bernard J. Herpst
Theodore R. Paulding, Jr.
Lewis Lassow
Daniel B. Scott
Kathleen Kiernan-Pagani
Robert Hicks

Town Council

Susan Karp
Carol H. Ahlschlager
Whit C. Osgood
Kurt P. Cavanaugh
Marti Curtiss
Stewart "Chip" Beckett III
Barbara C. Wagner
Thomas J. Kehoe
Carolyn M. Treiss

Town Plan & Zoning Commission

Patricia V. Bussa
Patricia V. Low
Sharon Jagel
William Finn
Steven B. Ryan
Sharon H. Purtill
Alternates:
Raymond Hassett
Eric W. Schaefer
Keith S. Shaw

Water Pollution Control Authority

Bradley Northrop
John C. Gavin
Louis M. Accornero
Nils Carlson
William H. Habicht
Frank J. LaPorte III

Welles Turner Library Board

Elizabeth Fitzpatrick
Vanessa Kerrigan
Glenda Rose
Patricia Saddle mire
Laurie Paternoster
Diane Hemlock

Youth & Family Services Commission

Patrick Sullivan
Tamara Vrabely
Scott Heaney
Angela Phelan
Natalie Cook
Joanne R. Schneider
Tricia Dougherty
Susan Calabro
Non-Voting Members:
Father Kevin Cavanaugh
Sergeant Keith O'Brien

Zoning Board of Appeals

Michael T. Fitzpatrick
James T. Van Law Jr.
Sandra O'Leary
Jeanie G. Babineau
John C. Linderman
Alternates:
Charles L. Monaco
Anthony Gesnaldo
Jeannie S. Loughlin

Connecticut River Assembly

Richard Mihm

Agricultural Advisory Committee

Mario Accornero
Henry Rose
J. Baylis Earle
Louis Bussa
Richard Ferrari
Deborah McIntosh
Michael Longo

Great Pond Stewardship Committee

Gerhard R. Schade
Paul Kehoe
Dennis Kerrigan
Dennis McInerney
David Gumbart
Barbara C. Wagner
Chip Beckett
Marti Curtiss
Judy Harper
Tom Mocko



TOWN OF GLASTONBURY

Town Officials - Following November 2006 Election

Board of Education

Lorraine Marchetti *
Jeremy Griesvson
Elizabeth Rogan
Richard C. Brown •
Pandora "Pandy" Wohler
Thomas Edgington
James R. Zeller
Lynn A. Onderko

Board of Finance

Diane L. Northrop •
James R. McIntosh *
Robert W. Jenkins
Walter F. Hemlock
Constantine Constantine
Peter B. Deich

Board of Assessment Appeals

David Motycka •
Robert D. Bowden
Dennis C. Cavanaugh
Bernard J. Herpst
Forbes Warren
Robert F. Vacchelli
Eileen M. Dobensky

Bldg. Board of Appeals/ Code Review Committee

Calvin J. Carini
James W. Dutton
Robert Kaelin
John S. Sardo
Graham Tyrrol

Commission on Aging

William McGaw, Jr.
Susanne Dock
John DiSette
Nancy Kent
Ernest F. Reale
Eva Bowden
Janeen Dolan

Community Beautification Commission

W. Gilbert Wolf
Robert G. Shipman •
Donald B. Reid
Linda DeGross
Della Winans
Lewis Middleton
David Flatterly

Conservation Commission

Kim McClain
Judy Harper •
Dennis McInerney
James Bingham
Gerhard R. Schade
William Patrick
Helen D. Stern

Cox Cable Advisory Council

Patricia Darling
Christopher Fraleigh
Martin Loughlin
Thomas Edgington
(Bd. of Ed. Representative)

Economic Development Commission

Gretchen Deans
Anthony L. Lazzaro, Jr.
Michael Botelho
David M. Hallows •
Raymond A. Dolan
Winona Zimberlin
Caren Kittredge

Ethics Commission

Alexandrina (Sandy) Sergio
Alan R. Spier
Nancy Thomas
Patrick Treacy
Angela Bull
Alternates:
Reginald L. Babcock

Fair Rent Commission

Lucille Jonah
Judith A. Stearns
Allen Karp
Andrea Broder
John C. Hilton
Stephen D. Oppenheim
David Evans •

Fine Arts Commission

Doris O'Rourke
Helen Litwin
Dianne Hemlock Grinvalsky
Catherine Carlone •
Heather Summers
Sandra MacGregor
Diane Lacy

Fire Commission

Gilbert D. Spencer
James W. Dutton
Rocco N. Fierravanti
Raymond A. Dolan
Arnold H. Higgins
Richard W. French, Jr.

Historic District Commission

Mary Lou Barrett
Barbara Theurkauf
E. Marston Moffat
Michael J. Stassen
Steven Snyder
Dr. Trish Manfredi
Alternates:
Courtney MacDonald
Brian Davis
Dorothy C. Cameron

Housing Code of Appeals

Nelson C. L. Brown
Kristine Brown
Dr. Michael F. Lepore
W. Michael Low

Human Relations Commission

Susan Sit
Joan Kemble
Patricia A. Darling •
John C. Glezen
Virginia Hajek

Incorporators/ Free Academy

Richard Mihm
Patricia Saddle mire
John Waterhouse

Insurance Advisory Committee

Robert J. Hager
Stephen J. Ludwig
Ronald E. Palmer
David Hoopes
Thomas Mullaney
Patricia Shea-Lovell
Stephen L. Jones

Greater Hartford Tourism District

Katherine C. Kennedy

Personnel Appeals Board

Elizabeth "Betty" McLaughlin
Robert W. Rulevich
Glenda Rose
Richard Vitterelli
Keith Shaw

Public Buildings Commission

Lisbeth Becker
Charles I. Monzeglio
Stephen Shipman
David B. Cox
Suzanne S. Galvin
Liaisons:
(Bd. of Education)
Gus Constantine
(Bd. of Finance)

Public Housing Authority

Donald H. Foberg
James F. Noonan
Jeanette Pollard
Richard H. Inman
Zelda Lessne
Judith Jaskulski (Tenant Rep.)

Recreation Commission

Allyson Ravosa
Michael C. Collins
Dennis Kerrigan •
Brian Summers
Michael H. Clinton
H. James Boice *

Safety Committee

Brian Ellis
Bernard J. Herpst
Theodore R. Paulding, Jr.
Lewis Lassow
Daniel B. Scott
Kathleen Kiernan-Pagani
Robert Hicks

Town Council

Susan Karp •
Carol H. Ahlschlager
Whit C. Osgood
Kurt P. Cavanaugh
Marti Curtiss
Stewart "Chip" Beckett III
Barbara C. Wagner
Daniel Schnaidt
Carolyn M. Treiss

Town Plan & Zoning Commission

Patricia V. Bussa
Patricia V. Low
Sharon Jagel •
William Finn
Steven B. Ryan
Sharon H. Purtil
Alternates:
Raymond Hassett
Eric W. Schaefer
Keith S. Shaw

Water Pollution Control Authority

Bradley Northrop
John C. Gavin
Louis M. Accornero
Nils Carlson
William H. Habicht
Frank J. Laporte III

Welles Turner Library Board

Elizabeth Fitzpatrick
Vanessa Kerrigan
Glenda Rose
Barbara Nebb
Laurie Paternoster •
Diane Hemlock

Youth & Family Services Commission

Lisa Furbush
Tamara Vrabely
Scott Heaney
Diane Levsky
Angela Phelan
Natalie Cook
Joanne R. Schneider
Tricia Dougherty •
Susan Calabro
Non-Voting Members:
Father Kevin Cavanaugh
(St. Paul's Church)
Sergeant Keith O'Brien
(Glastonbury Police Dept.)

Zoning Board of Appeals

Michael T. Fitzpatrick
James T. Van Law, Jr.
Sandra O'Leary
Jeanie G. Babineau
John C. Linderman
Alternates:
Jack Smith
Anthony Gesnaldo
Jeannie S. Loughlin

Connecticut River Assembly

Richard Mihm

Agricultural Advisory Committee

Mario Accornero
Henry Rose
J. Baylis Earle •
Louis Bussa
Richard Ferrari
Deborah McIntosh
Michael Longo

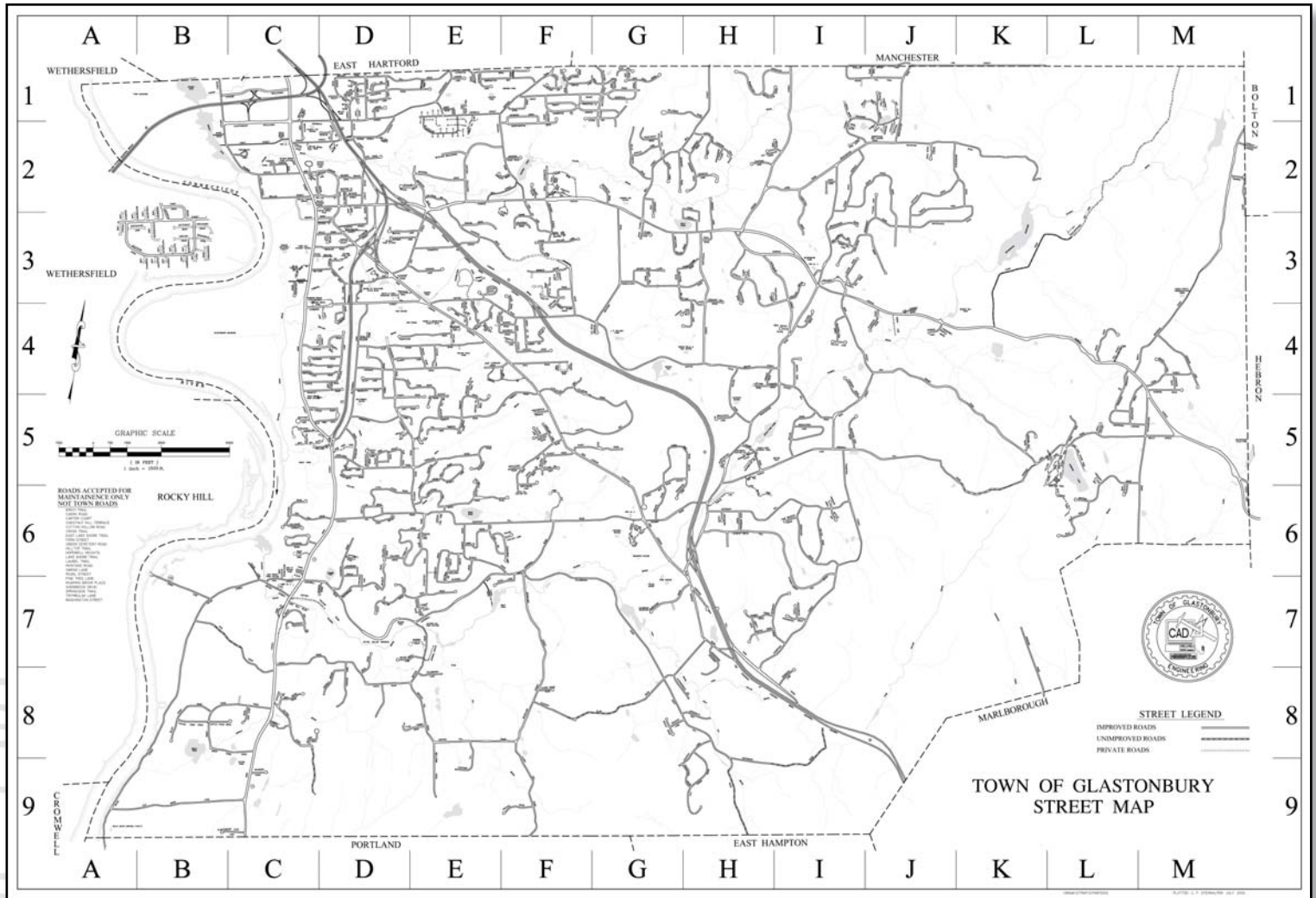
Great Pond Stewardship Committee

Gerhard R. Schade •
Paul Kehoe
Dennis McInerney
David Gumbart
Barbara C. Wagner
Chip Beckett
Marti Curtiss
Lynn Hazard
Judy Harper
Tom Mocko
(Environmental Planner)

• Chairman
* Vice Chair

TOWN OF GLASTONBURY

Town Map





Town of Glastonbury
Town Hall
2155 Main Street
Glastonbury, CT 06033
860-652-7710
www.glastonbury-ct.gov



THE Town of Glastonbury Annual Report 2005-2006 PERSPECTIVE

