

TABLE OF CONTENTS

Our Town	Statistics and Information 2 Town Council 3 Town Manager 4 Probate Court 5 Town Attorney 5 Board of Education 6-7
Human Services	Parks and Recreation 8-9 Social Services 10 Senior Services 10-11 Youth & Family Services 11-12 Libraries: E. Glastonbury Public 12 S. Glastonbury Public 17 Welles-Turner Memorial 17-18
Special Section To Pull Out & Save	Administration, Organization Chart, Vision Statement 13 2002 Calendar 14-15 Meeting Schedule 15 Phone Directory 16
Human Services continued	Facilities Maintenance 18 Housing Authority 18
Community Development	Great Pond Preserve Stewardship Committee 19 Community Development 19
Physical Services	Physical Services 20 Engineering 20 Highway 20 Vehicle Maintenance 20
Sanitation	Water Pollution Control 21 Refuse Disposal 21 Water Pollution Control Authority 21
Public Safety	Police Department 22-23 Fire Department 24 Ambulance Association 24-25 Civil Preparedness 25
Administrative Services	Board of Finance 26 Financial Administration 26 Accounting 26 Property Assessment 27 Revenue Collection 27 Town Clerk 27
Financial Highlights	Income Statement 28-29 Balance Sheet 29
Town Officials	Elected & Appointed 30-31

OUR TOWN

Location

Glastonbury is located ten miles southeast of Hartford, southerly of Route 3 and easterly of the Connecticut River and Interstate 91. It is served by the Hartford County Regional Planning Agency and the Capitol Region Council of Governments.

Area

52.5 square miles, 33,600 acres.

Population

Approximately 32,000.

Land Use

Principally residential (approximately 60% of land area) with suburban to rural densities, geographically compact commercial/employment district (approximately 15%), and significant open space comprising of water company, State forest and Town lands (25%).

Form of Government

Town Council, Town Manager, Board of Finance.

Town Hall

2155 Main Street
Glastonbury, Connecticut
06033

Located one quarter mile south of Hebron Avenue on the west side of Main Street.

Tax Rate

34.6 mills July 2001

Number of Voting Districts

Eight.

Net Grand List

On October 1, 2000
\$2,085,745,260

State Representatives

Sonya Googins (R)
240-8700

Christopher Stone (D)
240-0400

State Senator

Mary Ann Handley (D)
240-8600

U.S. Congressman

John Larson (D)
278-8888

U.S. Senators

Joseph Lieberman (D)
240-3566

Christopher Dodd (D)
240-3470

Town Government

Town Manager:

Richard J. Johnson

Town Council:

Walter J. Cusson, Chairman

Kevin P. Graff, Vice Chairman

Marti Curtiss

Robert M. DeCrescenzo

Susan Karp

Richard P. Lawlor

Whit C. Osgood

Sharon H. Purtill

Barbara Wagner



Front: Barbara Wagner, Sharon H. Purtill, Marti Curtiss, Susan Karp, Rear: Robert M. DeCrescenzo, Walter J. Cusson, Kevin P. Graff, Richard P. Lawlor, Whit C. Osgood

Dear Glastonbury Residents:

The Town Council continues to do its very best to address the diverse needs of the Glastonbury community.

Perhaps the greatest success over the last year was advancing Glastonbury's own "Riverfront Recapture". The tank farm property along the Connecticut River on Phelps Street has been demolished. In November of 2001, voters overwhelmingly approved a \$1.2 million bond authorization to remove contaminated soil from the site - a critical step in making the riverfront accessible to all.

In addition, voters reiterated their mandate for the preservation of open space with a favorable authorization of additional dollars to acquire land. The current Town Council will be working hard with town staff to identify appropriate parcels for purchase. Typically, such parcels are either rich in natural treasures and/or subject to guaranteed residential development. In both cases, preservation should be the top priority.

We must also balance preservation with the need for an expanded tax base through economic development. The Town of Glastonbury is currently working with experts to develop the town-owned Gateway Corporate Park in a way that maintains Glastonbury's character. Sensible development also continues at Somerset Square, and the Council continues to be as supportive as possible in the effort to build a new hotel.

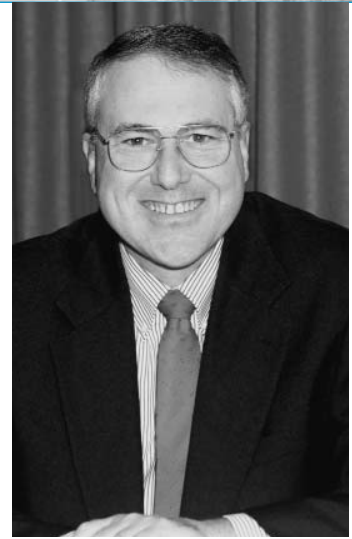
The year 2001 also included the terrific success story of moving the Apple Harvest Festival to the community fairgrounds. All walks of Glastonbury's population brought forward an enthusiastic showing of support. The Glastonbury Chamber of Commerce and our town staff deserve credit for spearheading this initiative and seeing it through successfully.

The biggest challenge that continues to face town residents and the Council is adequately addressing the space and programming needs of the various segments of our population in a fiscally responsible manner. While a referendum to renovate and expand Glastonbury High School was not successful, town leaders will be bringing a new proposal to the voters in 2002.

Equally important is providing appropriate facilities for our senior population. A new community center proposal is being developed that will hopefully end a more than 12 year struggle to bring Glastonbury consistent with other towns in our region in terms of senior/community facilities. The Phelps Street location could provide an incredible opportunity to make the Welles Street area the center of our town for community activities.

Unfortunately, the people of Glastonbury are not an inexhaustible source of tax dollars. With a sewage treatment plan upgrade on the horizon, expanding elementary school needs, and leftover debt from Smith Middle School, we must budget prudently to ensure that our town is affordable for current residents.

One of the most important factors in ensuring that the Town Council is doing a good job is a high level of input from the community. Write or call Council members, attend public meetings and mobilize your friends and neighbors. Please keep in touch with us as we try to keep in touch with you.



Walter J. Cusson
Chairman, Town Council
2000-2001

Town Manager's Report

I am pleased to have this opportunity to highlight a number of accomplishments and successes of the past year.

- Completed new Middle School construction on time and within budget allocation for January 2001 occupancy.
- Successfully negotiated and executed land purchases meeting open space and municipal facility objectives.
- Completed site demolition work at river front Phelps Street property on schedule and below budget.
- Rolled out new and improved Glastonbury Web Page at www.glasct.org.
- Awarded approximately \$3.5 million in state and federal grants for programs and projects involving all areas of municipal operations.
- Renovations and improvements to Gideon Welles School on schedule and within budget allocation for September 2001 occupancy.

The Town Operating budget for fiscal year 2001-2002 provides for a number of program and service improvements.

- Improved Youth & Family Service Middle and Elementary School Outreach and counseling services.
- Implements 5th Police Patrol District effective late 2002 to accommodate South and East Glastonbury residential growth.
- Funds evening and weekend Senior Service activities through 3 year grant from Hartford Foundation for Public Giving.

- Improves Information Systems support to enable continued e-Commerce and 24 hour Town Hall initiatives.

The past year brought a number of new and continued economic development successes and initiatives including:

- Executed agreement for commercial real estate broker services for nation-wide marketing, sale and development of town-owned former Gateway Corporate Park.
- High quality economic development approved and under construction. Examples include Class A office space, Home Depot, Stop & Shop, Hartford Hospital facility, and a variety of other retail, recreation, restaurant, and business facilities totaling over 700,000 s.f.

Glastonbury's population increased by 15% between 1990 and 2000, to approximately 32,000 residents. Community growth shows no signs of slowing down. Examples of the challenges and opportunities the community will face over the coming year include:

- Elementary School space needs.
- Land and open space acquisition and preservation.
- Continue environmental clean-up and riverfront park development of the Phelps Street in coordination with recreational improvements to the adjacent Welles Street open space.
- Continue high quality economic development consistent with Town



standards including sale and development of Gateway Corporate Park.

- New Community-Senior Center facilities.
- Continued investment in parks and recreational facilities and programs.
- Ongoing balance of residential and commercial development, open space, historic and natural resource preservation
- Maintain sound financial planning and management to balance property tax requirements with continuing demands of growing community.

In closing, I want to express my sincere thanks and appreciation to the professional staff, board and commission members, residents and others who consistently dedicate their time, efforts and talents on behalf of the community. With the successes and accomplishments of the past, Glastonbury is well prepared to effectively meet the challenges and opportunities of the coming years.

A handwritten signature in blue ink that reads "Richard J. Johnson".

Richard J. Johnson
Town Manager



Duncan J. Forsyth

Town Attorney

Halloran & Sage is pleased to have continued its long-standing relationship as Glastonbury's Town Attorney. During the last fiscal year we have represented and advised the Town on a wide range of matters including land use appeals, tax appeals, and contract review. We have also drafted legal opinions on a number of important issues, including tax abatement for volunteer firefighters, the proposed high school renovation project, telecommunications facility regulations and conflict of interest issues. We assisted the various boards and commissions as they dealt with important matters such as the Home Depot and Stop & Shop projects as well as the establishment of a library meeting room policy.

The citizens of Glastonbury continue to have extremely skilled and dedicated employees and officials working on their behalf. We are pleased that our relationship with all Town

representatives remains strong and all that concerned have the common goal of working to foster the Town's long term interests. We look forward to many more years of working with the Town and its representatives.

Probate Court

The Connecticut General Statutes define a broad jurisdiction for the probate courts. These include services to mentally ill and incapable adults as well as adults with mental retardation; guardianship of the estate and person of minors; terminations of parental rights; adoptions; paternity matters; changes of name; marriage waivers; decedents' estates; trust estates and performance of marriages. The court also processed more than 1100 passport applications during the year.

In April 2001, I was elected as Second Vice-President of the Connecticut Probate Assembly, and as such I will continue to serve on the Connecticut Probate Assembly's Executive Committee. In addition, I will continue to serve on the Assembly's Regulations Subcommittee, which works with the Probate Court Administrator in drafting regulations to implement new state statutes. I continue to serve as a member of the Ethics Committee and as an alternate on the Judicial Review Council, both of which consider

complaints filed against probate court judges in the course of administering their duties as judge.

The Glastonbury Probate Court continues to be financially healthy and shows every indication of remaining so. It is expected that over time the new structure of taxing estates will result in some of the smallest courts (serving substantially fewer than 20,000 people) merging with other courts due to decreased volume. It remains to be seen what, if any, role the Glastonbury Probate Court will play in such mergers.

Ms. Esther Buffington continues as the Chief Clerk of the Court, and Patricia M. Kepler as the Assistant Clerk. In addition, due to the large number of passport applications processed by the Court, the Court is working with the Town in considering hiring a second assistant clerk to assume passport-related duties and other court-related duties.



Donald L. Hamer
Judge of Probate

Board of Education

The 2000-2001 school year is one we can look back on with great pride, as Glastonbury celebrated the opening of the new Smith Middle School for 7th/8th grades in January. We also faced the challenge of coping with a steady growth in student population while maintaining and improving on the quality of our academic programs. The accomplishments which follow are evidence of our effort to meet this challenge.

90% of the Glastonbury High School Class of 2000 Are College Bound. The most frequently attended colleges are University of Connecticut, Central Connecticut State University, Northeastern, George Washington, and University of Rhode Island. Other destinations for the Class of 2000 include Boston College, Boston University, Brown University, Dartmouth, Georgetown, Harvard, Holy Cross, Penn State, The Citadel, and Villanova.

Over 70% Of Glastonbury High School Students Participated in at Least One of the 59 Interscholastic Sports Teams, the newest of which is the crew team. Glastonbury teams were league champions in 9 sports during the year.

Glastonbury Students Measure Up with 92% of the Class of 2000 taking the SAT and scoring 549 Verbal and 556 Math, which are well above both state and national averages. There were 5 National Merit Finalists and 13 students receiving Letters of Commendation. 10th graders took the CAPT with 72% at state goal; and CMT scores for grades 4, 6 and 8 continue to show very solid achievement with students scoring above comparable towns in 6 out of the 8 sub-tests and above the state average in all 8 sub-tests.

An In-Depth Curriculum Review was completed in Music. There were 117 student musical performances this school year. Over 1000 students in grades 4-6 play a musical instrument representing a 35% growth over the past 5 years. Curriculum Reviews are also

underway in Art and Health/Physical Education.

The Math And Science Departments have made changes with redesigned curriculum and new and upgraded laboratory/hands-on activities for students. This effort continues with sixth grade students moving to Gideon Welles and participating in a minimum of 2 science labs a week. New math materials piloted and selected for the elementary grades will provide more challenging problem solving opportunities including pre-algebra.

Expanding The World Of Glastonbury Students continues with over 90% of our K-12 population taking at least one foreign language. Through travel, students and staff learn more about the culture of others with exchange opportunities to the Ukraine, France, Quebec and Mexico in 2000-2001. Visitors arrived from the Ukraine and France. Completion of the new digital foreign language lab at GHS and Smith further enhance student opportunities.

Glastonbury Takes Great Pride in Anne Jarvis being selected CT Assistant Principal of the Year by the Connecticut Association of Schools, Mark Pearsall being named Glastonbury Teacher of the Year, Dr. Alan Bookman elected to Headmaster's Academy, Christy Brown serving as President Elect of American Council on the Teaching of Foreign Languages, and Jackie Jacoby elected as an officer of the Connecticut Association of Public School Superintendents.



Magnet School student participation at the East Hartford/Glastonbury Elementary Magnet School topped 110. GHS students attended the part time programs at the Learning Corridor's Academy of Math/Science and Academy of the Arts. Construction of the Two Rivers Middle Magnet was begun and can be seen from Route 2, across from the off ramp for East River Road. This grades 6-8 magnet school is scheduled to open in September 2002.

Facility Changes included the successful mid-year opening of the new Smith Middle School, a facility responsive to the future, and the completion of renovations to Gideon Welles for all the town's 6th graders and 5th graders from Hebron Avenue and Hopewell Schools. There was a prodigious effort to pass a GHS addition/renovation project which failed on its first attempt. An early 2002 referendum date is anticipated. A redesigned driveway and parking lot were completed at Hopewell School.

The Teaching/Learning Process is most directly affected by the teacher in the classroom. A committee of staff has done an



Helen Stern, Chairperson

exceptional job of reshaping the Teacher Evaluation and Professional Development Plan which focuses on standards of good teaching and evidence of student learning.

Technology And Telecommunication. With the advent of the Wide Area Network, most of our staff gained accessibility to both internal and external e-mail and to the Internet. Smith Middle School, with the most current infrastructure, became the pilot school for the use of the Copernicus Education Portal. This gateway to the Internet has been used for research, for sharing ideas among teachers and for posting information (including homework) for students and parents. The speed of the Wide Area Network will improve the opportunities for greater communication among staff and schools.

Our School Buildings Were Well Used After School Hours during 2000-2001, 109 non-



Jacqueline Jacoby, Superintendent

school community groups equaling over a half a million people participated in community sponsored activities in our buildings.

The Glastonbury Public Schools continue to focus on new goals, new priorities. The second Long Range Planning Process will conclude in the 2001-2002 school year and updated goals for the system will be identified. This planning will help define priorities for educating students who face a profoundly different future.

The goals that have been set are neither easily nor quickly reached, but they are attainable. In the long term, the Board of Education remains committed to its central goal, providing the best education possible for the children of Glastonbury. For as Alvin Toffler's sentiment echoes, "The illiterate of the twenty-first century will not be those who cannot read and write, but those who cannot learn, unlearn, and relearn."



Parks and Recreation

The Parks and Recreation Department and Fine Arts Commission continue to provide a wide variety of recreation opportunities which work to enhance the quality of life in Glastonbury. Town sponsored programs, public parks and open space work together to meet the diverse needs and interests of the community and its members.

Several new projects were completed this year. Chief among them was the construction of the new middle school. The campus provides two new multi-purpose fields, a baseball field, and a walking track for public use. Two tennis courts in Addison Park were completely refurbished with new paving, nets and posts, and fencing. Working with T&M Homes, Inc., the developer of The Village at Minnechaug, a new seventh hole was constructed at Minnechaug Golf Course. Other improvements to the golf course include a new elevated tee complex on the fifth hole, new sand traps on the fourth hole, and various cart path and irrigation enhancements. With support from the Hartwell Soccer Club and Casella Custom Excavating, a soccer field was completely refurbished at the Hebron Avenue School including regrading, drainage, irrigation, and sodding the entire field.

Planning continues to progress for the development of the Riverfront Park off of Welles Street. Additional

environmental study was completed in the spring including an evaluation of suspect vernal pools, wetlands delineation, and a breeding bird survey. The natural resource information will be used to help shape the master plan for the property. As the oil storage tanks come down on the adjacent Phelps Street property, the master plan for the riverfront park will be expanded to include this parcel which has easily accessible frontage on the Connecticut River.

Town sponsored programs continue to be popular with residents of all ages. The childrens' swim lesson program was expanded to include a series of classes in the spring. Continued emphasis on expanding programming for teens led to several new programs including the Leader-in-Training program, Battle of the Bands, Mall & Movies trips, and several outdoor adventure activities. The new gymnasiums at the middle school have enabled the youth basketball program to expand its offerings, and a new Over 30 basketball program was started. The Men's Over 40 Slow Pitch Softball League also had its inaugural season. The indoor pool at the high school and three outdoor swimming areas provide opportunities for swim lessons, fitness, competitive swimming,



and a place to cool down during the dog days of summer.

This year the Department began allowing residents to purchase recreation services with a credit card. The initiative has improved customer service and the efficiency of department operations.

As the Town's population continues to grow, the department is challenged to meet the increased demand for recreation services. Additional indoor facilities are needed, particularly during the daytime hours, for programming. The indoor pool at the high school is fully programmed and used to its maximum potential. Additional park land is needed for the development of active recreation areas. The Recreation Commission is in the process of updating the Plan of Development for Parks and Recreation. The plan, which is used to guide the systematic development of program and



facilities, is expected to be completed this year.

Several initiatives have begun which are expected to be completed within the next 12-18 months. With financial support from an anonymous donor and a Town appropriation, plans are underway to construct a skate park behind Town Hall. Renovations to holes 2 and 3 at Minnechaug Golf Course are expected to begin in the fall 2001. Improvements will focus on improved safety and playing conditions. Parks staff will be working with volunteers from the PTO to landscape the new parking area and main entrance to the Hopewell School. The basketball courts in Welles Park are scheduled for renovation in the spring 2002.

Last, but not least, recreation staff will be collaborating with the Town's substance abuse prevention council to significantly expand the number of alternative activities for teens that are offered.

Many thanks to the dedicated staff, boards and commissions, community service clubs and organizations, and individual volunteers whose contributions make Glastonbury a great place to live, learn, work and do business.



1. "Outside Vegas" performs at Glastonbury's first ever Battle of the Bands.

2. PTO volunteers help beautify the grounds at the Hebron Avenue School.

3. Standing at attention at the Annual Pooch Pageant.

4. Perennial flower beds at the Paul Love Garden on Main Street are maintained with help from volunteers from Country Gardeners.

5. Who knew buried at Awesome Adventures Teen Camp could be so much fun!

6. The Senior Citizen's Picnic brings a smile to everyone's face.

7. Parks & Recreation's Certified Playground Safety Inspector, Mike Stankowski, completes repairs to a school playscape.



Social Services

The Social Services Department strives to promote the well being, self-sufficiency and quality of life among Glastonbury residents. The Department develops and administers various programs and initiatives that provide individuals and families with the necessary support and opportunities to realize their fullest potential. The Department's Administrator serves as the Staff Liaison to the Human Relations Commission, which is charged with investigating complaints of illegal discrimination in the workplace, housing and education. No complaints were received by the Commission during fiscal year 2000-2001.

- Provided additional social services to local residents receiving financial/medical assistance through the Connecticut Department of Social Services through participation in an "East Of The River" Cooperative which received a state grant

to provide on site services to local residents at the local Department of Social Services District Office in Manchester.

- Increased and diversified the overnight summer camp experience for local children. Sent 17 children to the Salvation Army's Camp CONNRI in Ashford, CT; sent 10 children to the Channel 3 Kids Camp in Andover, CT
- Participated in the Salvation Army's pilot program "Boots-n-Shoes 2000" by providing back-to-school shoes to 77 school aged children with Glastonbury participants able to obtain the most pairs of shoes (143) of any other participants in Connecticut or Rhode Island.

Senior Services

The Senior Services Department operates as a community focal point for the coordination of multi-purpose

services and programs, for Glastonbury seniors who are living independently or with families in the community. The Department services town residents age sixty years old and over, to promote independence, personal enrichment and an enhanced quality of life.

The Senior Services Department provides a wide variety of services and programs to Glastonbury's older residents. The Dial-A-Ride program provides accessible in-town transportation for seniors and disabled adults. The department also offers seniors a daily nutritious lunch program. The Elderly Outreach Program helps frail and homebound seniors access the information and services needed to remain independent in the community. The Longevity Club is a program for frail seniors which offers stimulating mental and physical activities in a structured, supervised setting.

A variety of town sponsored cultural, recreational and wellness programs are offered at the Senior Center and at various locations throughout the town. Information on services and programs for seniors is available through a monthly informational newsletter, *The Sharing Tree*, which is distributed to approximately 1800 Glastonbury households.

The Senior Services Volunteer Program helps the community face the challenge of providing necessary services with limited resources. Approximately 125 volunteers donate



Treavor Datton poses with some of the toys he collected in his neighborhood for the Social Services Annual Toy Shop.

their time and talents to offer a wide of services that benefit the Glastonbury seniors.

Some of the Senior Services Departments accomplishments of the past fiscal year include the following:

- Provided Elderly Outreach Services to 710 seniors and their families, a 24% increase in service. This program assists seniors in maintaining their physical, social and financial independence by providing information, referral, and in-home support services to seniors and their families.
- Developed the GAPS Volunteer Transportation Escort Program to assist frail seniors who need an escort to access available transportation programs.
- Provided 19,242 rides to senior and disabled residents through the Dial-A-Ride Program.
- Provided 11,250 nutritious lunches to Glastonbury seniors.
- Through a grant from the Hartford Foundation for Public Giving, developed the Expanded Senior Center Activities, Programs, and Experiences (ESCAPE) which expands senior center programming and transportation to evenings and weekends and expands services to frail seniors.



Biff Finocche, Edmund Meincke, Sonya Googins, Rochelle Ripley at the Youth & Family Services' 30th Anniversary reception.

Youth and Family Services

On Wednesday, October 18, 2000, Youth and Family Services celebrated its thirtieth anniversary of continuous service to the Glastonbury community. On that day, Senator Joseph Lieberman stated in the United States Senate chambers, "I rise today to congratulate Glastonbury Youth and Family Services. For a generation, the agency has provided a much needed service to the families of Glastonbury, Connecticut. Glastonbury Youth and Family Services has opened doors for countless young people, and I am confident that the children of the community will continue to benefit from its services into the future."

Glastonbury Youth and Family Services gives quality customer service by providing development opportunities to empower youth and their families with Clinical,

Outreach, and Creative Experiences. This year to ensure quality service to the community, Youth and Family Services will be having a clinical social worker assigned to the Gideon Welles School and an Outreach Middle School Social Worker assigned to the Smith School.

Youth and Family Services Creative Experiences was awarded second place in the State Odyssey of the Mind competition and awarded ninth place in the World competition in Maryland. Creative Experiences also offered the summer dramatic production of *Joseph and the Amazing Technicolor Dreamcoat* and in December, presented *A Christmas Carol*. The Pan Players production of *Aladdin* was produced for the spring. "Pass It On" is a successful weekly television program which is produced and directed by Glastonbury Middle and High School students. The

"Elves" pose in the 2000 Toy Shop sponsored by Social Services.

Youth Services Action Group (YSAG) conducted over 50 service projects including the Haunted House held at Academy School. Creative Experiences has served over 825 individuals during the year.

Outreach Services' mission is to provide outreach services to the high school and the general community. Outreach Services runs the successful Welles Village Activity Council for Youth (WACY), Peer Education programs, high school support groups, the non-college graduate and dropout follow up programs, and is running a quality computer center in Welles Village. Outreach has provided service to 900 clients.

Clinical Services provided services to 650 individuals and 400 families and conducted 55 groups and presentations.

Youth and Family Services Commission

The Youth and Family Services Commission adopted a three-year plan to improve and extend its support for the services and programs provided by the Glastonbury Youth and



Officer Richard McKeon presented a program on bicycle safety for WACY.

Family Services staff. The Commission's mission continues to be to support the staff as they develop, coordinate, and promote beneficial programs for young people and families. The Commission has begun work on the "The State of Glastonbury's Youth and Families", a report to be presented to the Town Council to provide information that is pertinent to decisions they will make affecting the well-being of Glastonbury residents.

East Glastonbury Public Library

The East Glastonbury Public Library, Inc. was formed in 1960 by a group of parents of the children attending the new Eastbury School, which had no library. The building is the

original one room Eastbury School built in 1889 for approximately \$1,500. The second room was added in 1900 at a cost of \$1,000. The building still belongs to the Town, but everything in it belongs to the Library Corporation.

The Town grants the Library \$5,000 annually. The remaining monies necessary to maintain the building, pay the utilities, buy books and supplies, are both raised and spent by the volunteers who run the Library. Money is raised through an annual fund drive. The Friends of the East Glastonbury Library holds an annual Book, Bake & Bric-a-Brac Sale each March and a Books-Only sale in September.

The adult room houses an extensive collection of fiction



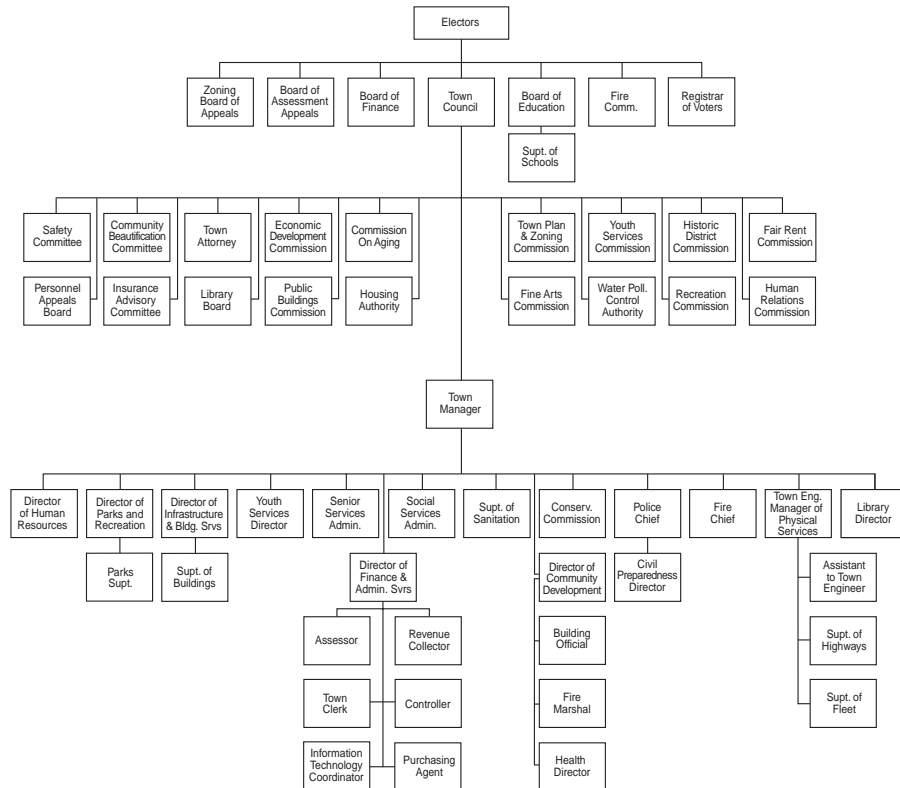
Cast of Y&FS' production of "Joseph and the Amazing Technicolor Dreamcoat."

TOWN OF GLASTONBURY ORGANIZATION CHART 2002

VISION STATEMENT

Building on over 300 years of tradition and heritage, Glastonbury continues to balance the preservation of its natural resources with the evolving needs of our community. Through positive community partnerships, careful planning, and professional management, we are committed to the highest levels of responsible and equitable service, integrity, and fiscal responsibility. Ongoing innovation, regional cooperation, and effective leadership will ensure that Glastonbury will always be a great place to live, learn, work, and do business.

Town Manager Richard J. Johnson	Assistant to Town Engineer Chester G. Hamlin	Fire Marshal Christopher N. Siwy	Senior Services Administrator Patricia R. Schneider
Chief of Police Thomas J. Sweeney	Building Official Edward P. Pietrycha	Fleet Superintendent Thomas O. Tierney	Social Services Administrator Jo-Ann Dorn
Community Development Director Kenith E. Leslie	Civil Preparedness Robert F. DiBella	Highway Superintendent Scott G. Zenke	Superintendent of Buildings David Sacchitella
Director of Finance and Administrative Services G. Ted Ellis	Collector of Revenue Madeline G. DeVellis	Housing Authority Director Ivan M. Pour	Superintendent of Sanitation Michael J. Bisi
Director of Human Resources Vacant	Controller Vacant	Library Director Barbara J. Bailey	Town Attorney Duncan J. Forsyth
Town Engineer, Manager of Physical Services Daniel A. Pennington	Director of Health David W. Boone	Information Services/Technology Coordinator Joseph M. Kelly	Town Clerk Edward J. Friedeberg
Director of Building Services Herbert L. Schwind	Director of Parks and Recreation Raymond E. Purtell	Purchasing Agent John A. Makiaris	Youth and Family Services Director Edmund J. Meincke
Assessor Vacant	Fire Chief Ronald E. Squiers		



DATES TO REMEMBER 2002

Financial Administration

January 24	Annual Town Meeting
March 21	Final Budget Hearing

Property Assessment

February 20	Deadline for filing written appeals to Board of Assessment Appeals
October 1	Annual Assessment Date: Property owners listed in Grand List
November 1	Last day to file business personal property declarations with assessor

Revenue Collection

January 1	Second Installment of Taxes become due
July 1	First Installment of Taxes become due
November 1	Sewer Use Bills become due

Town Clerk

April 13	Fishing season opens
June 1	Dog Licenses become available for the next fiscal year
September 10	Primary for State election if a challenge is filed
October 4	Absentee ballots for November election become available in Town Clerk's office
October 19	Hunting season opens
October 22	Last day to register to vote in order to vote in the November election (except for those who move to Town, turn age 18, or become a U. S. Citizen after this date)
November 5	Election Day

Social Services

February 1	Homeowners and Additional Veterans Tax Relief Programs begin
March	Camp CONNRI and Channel 3 Country Camp applications available
April 30	Last day to apply for Energy Assistance benefits
May 15	Renters Tax Relief Program begins
May 31	Last day to apply for Homeowners Tax Relief
September 16	Last day to apply for Operation Fuel benefits
October 1	Last day to apply for Renters Tax Relief
October 15	Last day to apply for Additional Veterans Tax Relief benefits
October 15	Energy Assistance application period begins
November 21	Thanksgiving food baskets distributed (tentative)
December 2	Operation Fuel application period begins
December 17, 18 & 19	Annual Toy Shop (tentative)

Refuse Disposal

April 10	Extended operating hours for Transfer Station during Day Light Savings, Wednesdays 7:00 a.m. - 7:00 p.m.
September 18	Modified Day Light Savings hours, Wednesdays 7:00 a.m. - 6:00 p.m.
October 23	Last Wednesday of Transfer Station Day Light Savings hours

Household Hazardous Waste Collection - schedule for 2002 available in the Town Newsletter, local newspaper and mailers.

Youth & Family Services

August 8, 9, & 10	Glastonbury High School Summer Show
-------------------	-------------------------------------

COMMUNITY EVENTS 2002

Apple Harvest Festival 2002
October 19 & 20

Welles-Turner Memorial Library Events

National Library Week April 14-20
Week of the Young Child April 7-13
Book Sale May 18, September 7
National Children's Book Week November 17-23

Fun Runs

6:30 p.m. GHS
June 25, July 2, July 9, July 16, July 23, July 30, August 6

Kid's Pooch Pageant

6:00 p.m. Hubbard Green July 8 (Rain Date: July 15)

Santa's Run 3.5 Mile Run

Noon GHS December 8 (Snowdate December 15)

Senior Picnic

Hubbard Green, August 7 (tentative) Festivities begin at 9:30 a.m.

Summer Music Series

7:00 p.m., Hubbard Green, Wednesdays - July 10, July 17, July 24, July 31

Town Band Concert

7:00 p.m., Hubbard Green, Sundays
June 30, July 7, July 14, July 21, July 28

Boards and Commissions Meeting Schedule

Town Council	2nd and 4th Tuesdays	Town Council Chambers
Board of Education	2nd and 4th Mondays	Town Council Chambers or GHS Library
Board of Finance	3rd Tuesday	Town Hall Meeting Room, 2nd Floor
Town Plan and Zoning Commission	1st and 3rd Tuesdays	Town Council Chambers
Board of Assessment Appeals	As required	Town Hall
Building Board of Appeals	As required	Town Hall
Commission on Aging	1st Monday	Senior Center, 17 Hebron Avenue, 1st Floor
Community Beautification	2nd Wednesday	Town Hall Meeting Room, 2nd Floor
Conservation Commission	2nd and 4th Thursdays	Town Council Chambers
Economic Development	1st Monday	Office of Community Development, Town Hall, 3rd Floor
Fair Rent Commission	As required	Herbert T. Clark House, 45 Canione Road
Fine Arts Commission	2nd Monday	Glastonbury High School, Room 136
Fire Commission	1st Thursday	Fire Company #1, 2825 Main Street
Historic District Commission	As required	Town Hall
Housing Code of Appeals	As required	Town Hall
Human Relations Commission	Quarterly	Town Hall Lunch Room, 2nd Floor
Insurance Advisory Committee	Quarterly	Engineering Conference Room, Town Hall, 3rd Floor
Public Buildings Commission	1st Wednesday	Town Hall Meeting Room, 2nd Floor
Public Housing Authority	3rd Wednesday	Herbert T. Clark House, 45 Canione Road
Recreation Commission	3rd Thursday	Parks and Recreation, 1086 New London Turnpike
Safety Committee	4th Monday	Town Hall Meeting Room, 2nd Floor
Water Pollution Control Authority	2nd and 4th Wednes.	Town Council Chambers
Welles-Turner Library Board	2nd Monday	Welles-Turner Memorial Library, 2407 Main Street
Youth and Family Services Commission	2nd Wednesday	Youth and Family Services, 321 Hubbard Street
Zoning Board of Appeals	1st Monday	Town Council Chambers

NOTE: Please contact the Town Clerk's Office at 652-7616 to confirm dates, times and locations as some schedules change due to holidays.

www.glasct.org

Town Departments

For Information	Call	Phone
General Information	Information Center	652-7710
Accounts Payable	Accounting	652-7595
Administration	Town Manager	652-7500
Assessment	Assessor	652-7600
Assessment	Info Line	652-7606
Birth Certificates	Town Clerk	652-7616
Building Permits	Building Office	652-7521
Bulky Waste Disposal	Sanitation	652-7772
Children's Department	Welles-Turner Library	652-7718
Civil Preparedness	Civil Preparedness	652-7576
Death Certificates	Town Clerk	652-7616
Deeds	Town Clerk	652-7616
Demolition Permits	Building Office	652-7521
Dial-A-Ride	Senior Services	652-7643
Dog Licenses	Town Clerk	652-7616
Dog & Animal Problems	Animal Control Officer	633-8301
Drainage Problems	Engineering	652-7735
Electrical Permits	Building Office	652-7521
Elderly Municipal Agent	Senior Services	652-7642
Energy/Fuel Assistance	Social Services	652-7638
Engineering	Engineering	652-7735
Financial Administration	Administrative Services	652-7586
Financial/Medical Assistance	Social Services	652-7638
Fire Chief	Fire Department	652-7555
Fire Marshal	Fire Marshal	652-7526
Food Bank	Social Services	652-7638
Health Matters	Health Department	652-7534
Highways	Highway Superintendent	652-7749
Housing Authority Comm.	Housing Authority	652-7568
Inland Wetlands	Community Development	652-7510
Landfill Permits	Engineering	652-7735
Libraries	Welles-Turner	652-7719
	S. Glastonbury	633-4793
	E. Glastonbury	633-5637
Marriage Licenses	Town Clerk	652-7616
Nursing	Visiting Nurse Association	633-3521
Passport Information	Probate	652-7630
Personnel	Human Resources/Personnel	652-7501
Planning	Community Development	652-7510
Plumbing & Heat Permits	Building Office	652-7521
Police (General Information)	Police Department	633-8301
Probate Court	Probate Clerk/Judge	652-7629
Recreation	Recreation Department	652-7679
Recreation Schedules/ Cancellations	Info Line	652-7689
Refuse Disposal/Recycling	Info Line	652-7790
Refuse Disposal/Recycling	Office	652-7772
Registration of Voters	Registrar of Voters	652-7627
Salvation Army	Social Services	652-7638
Sanitary Inspection	Health Department	652-7534
Senior Center	Senior Services	652-7642
Sewer Department/ Water Pollution Control	Sanitation	652-7772
Sewer Use Bills	Sanitation	652-7772
Snow Removal & Streets	Highway Superintendent	652-7749
Social Services	Social Services	652-7638
Taxes	Collector of Revenue	652-7614
Taxes	Info Line	652-7606

Tax Relief Programs	Social Services	652-7638
Trees	Parks and Recreation	652-7679
Voting	Registrar of Voters	652-7627
Youth & Family Services	Youth & Family Services	652-7661

Board of Education

Central Office	Contact Person	Phone
General Information		652-7951
Superintendent of Schools	Jacqueline Jacoby	652-7961
Assistant Superintendent	Edward Schofield	652-7965
Business Manager	Sharon Smith	652-7941
Facilities & Food Services Dir.	Brad Devlin	652-7948
Transportation	Angelo Balesano	682-7295

Curriculum	Director	Phone
Art	Daniel Roach	652-7957
Athletics	Barbara Startup	652-7234
Career/Vocational Education	Gary Nolf	652-7252
Foreign Language	Christine Brown	652-7955
Language Arts/Reading	Richard Dlugos	652-7967
Mathematics	Michael Landry	652-7967
Music	Leslie Hunt	652-7956
Physical/Health Education	Basil Roberts	652-7236
Science	Kenneth Roy	652-7293
Social Science	Deborah Willard	652-7967
Guidance Dept./Director	Linda Roberts	652-7214
Special Education (Elem.)	Diane Goncalves	652-7971
Special Education (6-12)	Leslie Roulier	652-7971
Glastonbury High School		
Principal	Alan Bookman	652-7204
Smith Middle School		
Principal	Thomas Russo	652-7040
Gideon Welles School		
Principal	Frances Maynard	652-7800
Buttonball School		
Principal	Patricia DaSilva	652-7276
Eastbury School		
Principal	William McDermott	652-7858
Hebron Avenue School		
Principal	Linda Provost	652-7875
Hopewell School		
Principal	Jeffrey Kitching	652-7897
Naubuc School		
Principal	Edward Litke	652-7918
East Hartford/Glastonbury Magnet School Principal	Scott Johnson	282-3396

TOWN WEB SITE www.glasct.org

**FIRE, POLICE &
AMBULANCE EMERGENCY Dial 911**

Routine Calls to
Police Department 633-8301