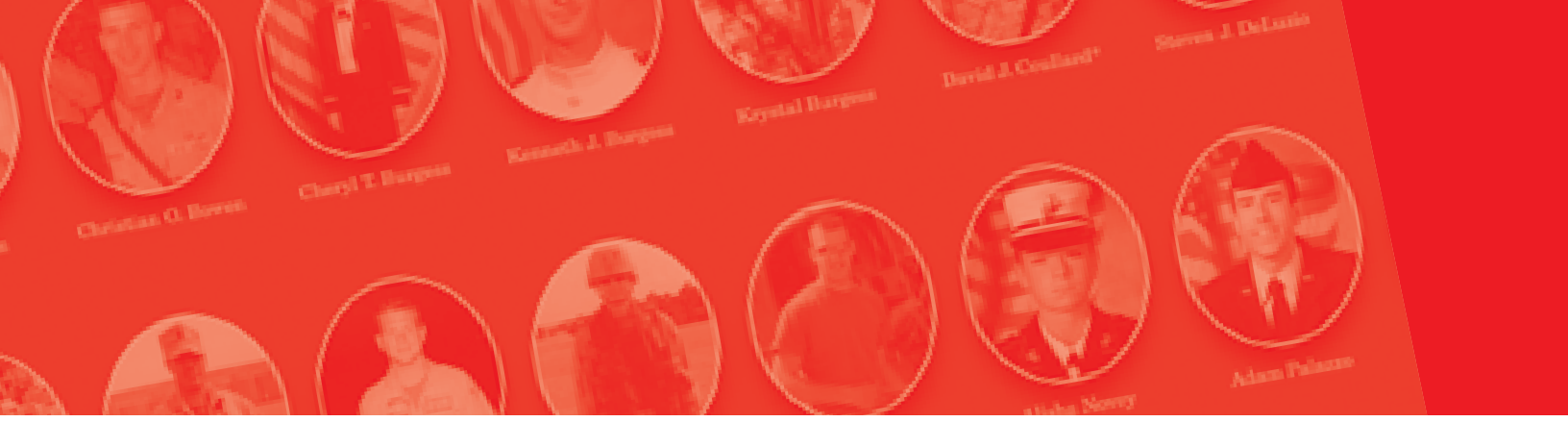


A Sense of Community
GLASTONBURY
Annual Report 2004-2005





Dedication

Wall of Honor



On behalf of the Town of Glastonbury, we take this opportunity to give special recognition in appreciation of our troops for their dedication, selfless service, sacrifice and determination in serving us and our country. It is brave men and women like these who ensure we will continue to enjoy our freedom in the United States of America. We will be forever grateful for the sacrifices they have made and continue to make for us and our country. To the soldiers we say, "Thank you for serving without reservation."

We salute you, we honor you, and we love you!

By Patricia C. Washington

The Wall of Honor is on display at Town Hall on the lower level.



Table of Contents



Our Town		Physical Services	
Statistics and Community Information	4	Engineering	22-23
Chairwoman's Message	5	Highway	23
Town Manager's Report	6	Vehicle Maintenance	23
Probate Court	7	Water Pollution Control Authority	23
Town Attorney	7		
Board of Education	8-9	Sanitation	
		Water Pollution Control Division	24
		Refuse Disposal	24
Human Services		Public Safety	
Parks and Recreation	10-11	Police Department	25-26
Senior Services	11-12	Volunteer Fire Department	26-27
Youth and Family Services	12-13	Civil Preparedness	27
Libraries:		Ambulance Association	28
Welles-Turner Memorial	13		
South Glastonbury Public	13-14	Administrative Services	
East Glastonbury Public	14-15	Administrative Services	28
		Board of Finance	28
		Financial Administration	28-29
		Accounting	29
		Property Assessment	29
		Revenue Collection	29
		Town Clerk	29-30
Facilities Maintenance		Human Resources	
Facilities Maintenance and Services	15	Human Resources	30
Housing Authority		Financial Highlights	
Housing Authority	16	Income Statement	31
		Balance Sheet	32
SPECIAL SECTION		Town Officials	
Administration	17	Elected and Appointed	33-34
Organization Chart	17		
2006 Calendar	18		
Meeting Schedule	19		
Phone Directory	20		
Community Development		Glastonbury Town Map	
Great Pond Reserve Stewardship Committee	21		Inside Back Cover
Community Development	21		
Inland Wetlands/Watercourses	21-22		

Glastonbury Town Council

(Front Row): Barbara C. Wagner, Susan Karp, Carolyn M. Treiss, Carol H. Ashlschlager, and Marti Curtis
(Back row): Richard J. Johnson, Thomas J. Kehoe, Kurt P. Cavanaugh, Stewart Beckett III, and Whit C. Osgood.



Our Town

Facts & Figures

Location

Glastonbury is located ten miles southeast of Hartford, southerly of Route 3 and easterly of the Connecticut River and Interstate 91. It is served by the Hartford County Regional Planning Agency and the Capitol Region Council of Governments.

Area

52.5 square miles, 33,600 acres.

Population

Approximately 32,985

Land Use

Principally residential (approximately 60% of land area) with suburban to rural densities, geographically compact commercial/employment district (approximately 15%) and significant open space comprising _____ of water company, State forest and Town lands (25%).

Form of Government

Town Council, Town Manager, Board of Finance.

Town Hall

2155 Main Street
Glastonbury, Connecticut 06033 Located one quarter mile south of Hebron Avenue on the west side of Main Street.

Tax Rate

28.75 mills July 2003

Number of Voting Districts

Eight

Net Grand List

On October 1, 2003
\$2,910,520,190

State Representatives

Sonya Googins (R)
240-8700

Christopher Stone (D)
240-0400

State Senator

Mary Ann Handley (D)
240-8600

U.S. Congressman

John Larson (D)
278-8888

U.S. Senators

Joseph Lieberman (D)
240-3566

Christopher Dodd (D)
240-3470

Town Government

Town Manager
Richard J. Johnson

Town Council

Susan Karp, Chairman
Whit C. Osgood, Vice Chairman
Carol H. Ahlschlager
Kurt P. Cavanaugh
Marti Curtiss
Walter J. Cusson
Kevin P. Graff
Thomas J. Kehoe
Barbara Wagner



Susan Karp, Chairwoman, Town Council



Our Town

Message from the Chairwoman



Dear Residents:

The 2004-2005 year was one of accomplishment, success and important planning for Glastonbury's future. We continue to maintain and improve town services, our education system and the unique character of our town. Glastonbury is recognized as a leader in meeting the needs of our residents and making the best economic, land use, facility and policy decisions for today and the future. These achievements distinguish our town as an excellent place to live, work and raise a family.

I would like to highlight just a few of the successes. The science wing and improvements at Glastonbury High School and the approved elementary school will provide appropriate facilities for our growing school population. The school bus and van facility is complete. The Riverfront Community Center represents the culmination of years of effort by staff, officials and residents. It is a destination for all ages and allows us to offer excellent programs, implement important initiatives and provide services for all residents. It is with great pride that we opened the facility, a shining example of what can be accomplished when an entire community works together.

Glastonbury was recognized by Standard's and Poor's with an AAA bond rating distinguishing us not only in our state but in the country. The long term financial benefits are significant and an appropriate reflection of years of excellent financial planning, debt management and capital investment. The land acquisition fund, supported by our voters, has allowed us to make strategic purchases and to work with our residents, land trusts and the state to preserve farmland, forests and valuable open space. We look

forward to the construction of 75,000 square feet of medical office space in the Gateway Park and to continued commercial growth in this area.

We continue to provide attractive alternatives for our residents through the establishment of a Village district in South Glastonbury and the approval of age restricted housing. The Gideon Welles House is now home to two local businesses and a bike path plan is underway. With your support, we will benefit from a new Public Safety Communication System. As we look ahead, we will work to expand recreational opportunities, complete the Riverfront Park and further improve the quality of life for all our citizens. We will continue to seek ways to work regionally and the state level to provide the most cost effective solutions.

As always, our accomplishments are due in large part to the excellent town and education staff and the dedicated volunteers who give so much time to improve our community. I extend my sincere thanks to all. It is with your input, talent and support that we will continue the Glastonbury tradition of excellence and success. It is truly my privilege to work with you.

Sincerely,

Susan Karp
Chairwoman, Glastonbury Town Council



Richard J. Johnson, Town Manager



Our Town Town Manager's Report

Dear Glastonbury Resident,

The outstanding results of the past year are built on past successes and accomplishments and continue the tradition of excellence in Glastonbury. I am pleased to have this opportunity to highlight several accomplishments of 2004-2005 as follows.

- Glastonbury was awarded a AAA credit rating by Standard & Poors. This is the highest municipal credit rating and Glastonbury is one of approximately 65 communities nationwide with a Standard & Poor's AAA bond rating. Standard & Poor's rates approximately 14,000 communities country wide. This rating reduces the rate of interest on long term borrowing issued by the Town and confirms the community's sound management practices and policies.
- Land acquisition and preservation continued with purchase of over 140 acres. These purchases were made possible through the Town's successful Land Acquisition and Preservation program. With funds approved at referendum, Glastonbury is positioned to respond effectively to land acquisition opportunities and is recognized state-wide for its successful land preservation program.
- Agreement was reached for sale of approximately 11 acres of the town-owned Gateway property. The site is intended for construction of approximately 75,000 square feet of Class A medical office buildings. The sale and proposed development plan is consistent with the Town's long term strategy for this property.
- Glastonbury was awarded over \$1 million in State and Federal grant funds over the past year. Looking back over the past 3 years, Glastonbury has received over \$4 million in grant assistance for a variety of projects and programs. Over \$1 million in grant requests are pending at fiscal year end and provide evidence of ongoing efforts to take advantage of various grant opportunities.

- Work on the Riverfront Community Center is nearing completion, high school renovations and expansions are well underway, and initial construction on the new elementary school is on schedule to begin in fall 2005 for August 2007 occupancy.
- Master planning and the permitting process for the proposed Riverfront Park off Welles Street is nearing completion. This proposed project includes walking trails, community fairgrounds, open space recreation areas, athletic fields, conservation and preservation areas, and related improvements. Grant monies and community donations are expected to offset a significant portion of proposed Town funding. A referendum over the coming year is anticipated.

As we look forward to the year ahead, efforts will continue to provide municipal programs and services in a cost efficient, effective and responsive manner. Work will continue on open space acquisition and preservation, concept plans for reuse of the Academy building, marketing and development of the Town owned Gateway property, and a host of other challenges and opportunities. Based on the successes highlighted above and throughout this report, Glastonbury is well positioned for the coming year.

Finally, my sincere thanks and appreciation to the Town staff whose hard work and dedication make the programs, services and successes described herein possible. My thanks and appreciation also to the Town Council, and all those who volunteer their time and talents to the community.

Sincerely,

Richard J. Johnson
Town Manager

Our Town

Probate Court



Pictured, from left to right, are Patricia M. Kepler, Mary M. MacGregor, Judge Peter Jay Alter, and Esther Buffington.

It is a privilege to serve as our community's Probate Judge. My first year has been rewarding and full. Recently, much has been written about increasing the efficiency and economic independence of the Connecticut Probate Court System by consolidating courts. I have met with Judge Lawlor of Probate Administration and have expressed my concerns regarding consolidation. Richard Johnson, Town Manager, and I have met many times to insure that our court will remain in Glastonbury. The Glastonbury Court is fulfilling its commitment to our citizens.

My goal continues to be to serve the needs of residents in a timely manner. I am in the court on a daily basis and have extended the court's hours. Effective January 1, 2005, the court is open on Tuesday evenings until 7:00 p.m. for the convenience of our citizens.

As your judge, over the past year I have made 10 presentations to the community as to the services the court provides and information necessary to be well prepared for end-of-life decisions. Many people have expressed surprise when I mention all the matters before our busy court. The 2005 Year-in-Review for new cases is as follows: Decedent's Estates: 222; Conservators: 27; Trusts: 17; Name Changes: 17; Guardianships: 13; Adoptions: 11; and Terminations of Parental Rights: 1; a total of 313 new cases. In addition to new cases, the Court oversees 190 continuing matters such as guardianships and conservatorships. In 2005, the court closed 249 pending cases. I presided over 230 hearings.

The court also serves Glastonbury by processing passport applications. Last year the court processed 1,289 passport applications. As of December 31, 2006, all air and sea travel to Canada, Mexico, Caribbean, Bermuda, South and Central America will require travelers to have a passport. Passport applications are processed from 12:00 – 4:00 Monday through Friday and Tuesday evenings until 6:30 p.m.

Town Attorney

Shipman & Goodwin LLP has had an exciting year serving as Glastonbury's Town Attorney. We have advised and represented the Town in a wide range of matters, including Freedom of Information Act matters, property tax appeals and general liability issues.

We have worked closely with the Town on the Code of Ethics Ordinance, presenting several training sessions for Town officials and employees and providing guidance to the Ethics Commission. We have been actively involved in the Town's purchases of property for open space and have advised the Town on other real estate matters such as acquisitions and sales of property and leases of

During the summer, Governor Rell signed a new inheritance tax law retroactive to January 1, 2005. To remain fully informed, Court clerks attended several seminars presented by Probate Administration, in conjunction with the Department of Revenue Services. These laws may change again in 2006. My staff and I take continuing education classes on various subjects related to court procedure and changes in the Probate law. Last year, each clerk attended 9 classes and I attended 3 seminars.

Glastonbury Life did an exceptional job in its September issue describing the various matters presided over by the probate system or before the Court. Watch the Glastonbury Citizen for upcoming articles and speaking dates. I will be giving another presentation in the near future on the importance of wills, living wills and healthcare advance planning documents.

In November, I felt compelled to comment on an article that was published in the Hartford Courant regarding the Probate System. While there are clearly opportunities to improve our Probate System, the fundamental purpose of our Probate Court — to serve our community fairly and conveniently — is being met.

On December 8th, the Glastonbury Court hosted the Connecticut Association of Probate Clerks' meeting at the Glastonbury Hilton. Attending were 111 clerks and assistant clerks and 18 judges from throughout the state. Attorney Linda Dow, former Chief Counsel for Probate Administration was the special guest. I gave a presentation on the Probate Year-in-Review as well as a brief discussion on Civil Unions.

I appreciate the many telephone calls I have received regarding the proposed changes in the Probate System. All have been positive as to our Court and in support of protecting the present system.

Thank you for the trust you have given me. I will continue to faithfully serve as your Probate Judge and look forward to the challenges and rewards of the coming year.

Town-owned property. We have also reviewed and negotiated contracts related to construction matters for the Community Center and the new elementary school and high school projects. In labor matters, we have handled labor contract negotiations, arbitration and State labor board proceedings and provided advice and counsel on other employment and pension issues.

The attorneys at Shipman & Goodwin LLP wish to thank the Glastonbury officials and staff for a wonderful first year. We have enjoyed working with the Town and look forward to our continued relationship.



Our Town

Board of Education

We have successfully completed another academic year in the Glastonbury Public Schools. The Glastonbury Public School System is recognized across the state for a commitment to excellence and high levels of student achievement. What distinguishes our school system from others is our dedication to planning, our ability to set priorities, and our willingness to stay the course. Our mission to educate and prepare the students of Glastonbury to reach their potential and become productive citizens of a global community is guided by our strategic planning. Through community-wide input and involvement, we have developed the goals within this plan to direct our efforts. The information below illustrates evidence of our commitment to maintain a strong quality program for Glastonbury students.

Second Generation Strategic Plan

The Second Generation Strategic Plan was approved with goals that will provide the framework for Glastonbury Public Schools over the next few years. These are:

- Set and articulate high expectations of achievement for both students and staff.
- Enhance and expand effective internal and external communication.
- Strengthen professional development and support for teachers, administrators and staff.
- Actively recruit and retain the best teachers, staff, and administrators.
- Integrate technology into the processes that enhance student learning and manage the business of learning.

Quality Staff

Perhaps the most important internal, system-wide trend is the changing face of our teaching and administrative staff. A key component to quality education is the development and maintenance of quality staff, and we are unwavering to be active connoisseurs of teaching talent. Approximately 30 % of the teaching staff has been in Glastonbury for three years or less. All potential candidates, go through a rigorous and demanding interview and selection process, and frequently comment that they chose Glastonbury after meeting our impressive teaching and administrative staff. The value of high quality teachers and

administrators is indisputable. We will continue through university partnerships, outreach efforts and recruitment to secure the "best" for Glastonbury.

We value the partnerships we continue to forge with parents, as these are crucial to our success. We thank our parent community for their ongoing active involvement and support.

Glastonbury High School Graduate Plans – Class of 2005

Over 93% of the Class of 2005 enrolled in either 2 or 4-year colleges or universities. Over 35% of the Class of 2005 enrolled in 2 or 4-year colleges/universities within Connecticut. Top schools our students will attend: Georgetown, Brown, Holy Cross, Perdue, University of Pennsylvania, Wesleyan, Cornell, University of Chicago, Boston College, Boston University, Tufts, New York University, Syracuse, Dartmouth, Middlebury College, Trinity College, Vassar, and Wellesley.

Participation in Interscholastic Sports

Approximately 43% of Glastonbury High School students participated in athletics program during the 2004-2005 school year with a total of 1404 athletes participating in the overall program. However, this total also reflects students who have participate in two and three sports. Eight of our teams were Central Connecticut Conference Champions, 127 varsity athletes were named to the All- Conference Team. In addition, 443 varsity athletes were named to the All-Academic Team for earning a varsity letter while maintaining a 3.0 grade point average during their season. Thirty-six varsity athletes were recognized as All-State in their sport and 4 varsity athletes were recognized as All-New England in their sport. The GHS girls' cross-country team was Class LL State Champions and the girls' soccer team received the Keith Johnson Sportsmanship Award. We had 70 students participating in intramural sports during the year.

Graduation Requirements for the Class of 2006 and Beyond

The Board of Education approved graduation requirements for the Class of 2006 and beyond which include the completion of 21 credits and defined student performance expectations in



reading, writing, math problem solving and requirements related to technology.

Test Results

92% of Glastonbury High School's 2005 graduates took the SATs (Scholastic Aptitude Tests) and this rate of participation was far above the state and national averages. GHS Verbal and Math SAT averages continue to be above state and national means. (For this class, both averages were the highest in the last five years). The Verbal score of 562 and the Mathematics score of 568 are also far higher than the Connecticut and the national average.

On both the 2004 Connecticut Mastery Tests (grades 4,6,8) and the 2005 Connecticut Academic Performance Test (grade 10), Glastonbury students also scored well above the state and above the averages for our Educational Reference Group (ERG, other Connecticut school districts with similar demographics).

GHS Addition/Renovation Project Underway

The addition and renovation project at Glastonbury High School is underway. This complex \$48 million dollar project (\$36 million after reimbursement) has begun and is on target to be completed in June 2007.

Magnet School Programs

The East Hartford-Glastonbury K-5 Magnet School, one of the first magnet schools in the state has maintained its strong program of science, technology and global studies with a focus on the language and culture of Japan. With 114 students from Glastonbury attending this school, planning has begun for building a new facility located on the grounds of Rentschler Field in East Hartford.

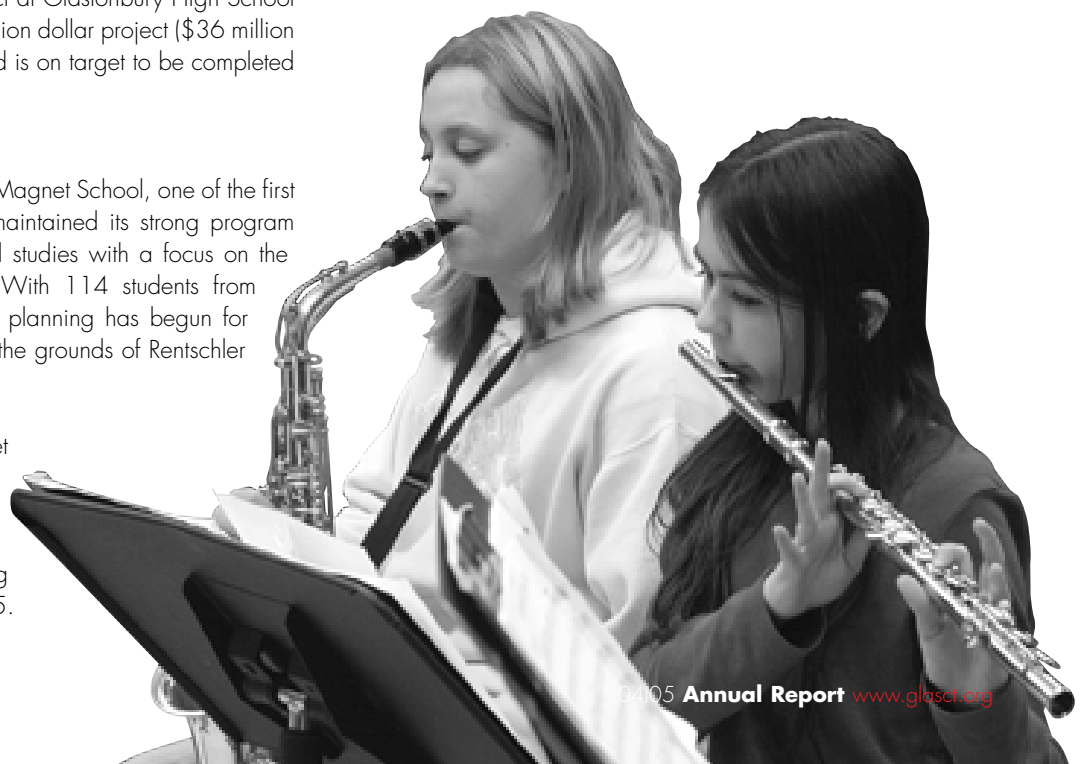
Two Rivers (5 town) Middle Magnet School, a science and technology magnet located in East Hartford, has over 95 Glastonbury sixth, seventh and eighth graders attending this unique program in 2004-2005.

At the high school level, Glastonbury students attended both the Learning Corridor for Math, Science and the Arts and Great Path Academy at Manchester Community College. Each of the magnet schools offers a different and unique option for Glastonbury students.

Safety and Security

Keeping our children safe and ensuring that we have the knowledge, tools, and capacity to protect them in the face of crisis, natural disaster or acts of terrorism is a shared responsibility. A comprehensive Crisis Management Plan and Incident Protocol Guidelines is in place.

Also, our elementary schools were equipped with security cameras that allow us to monitor both interior and exterior areas of the schools. In addition, our buses are equipped with a device called a Child Safety Reminder that requires drivers to walk to the back of the bus to disengage a buzzer before they are able to remove the keys from the ignition.





Jack Casella, backhoe operator, volunteers to help build pedestrian walkways in Addison Park. Dan Poirier, Park Maintainer, assists. The project serves as an example of an effective Town-community volunteer partnership.

Human Services Parks & Recreation

The Parks and Recreation Department and Fine Arts Commission continue to provide a wide variety of recreation opportunities, which work to enhance the quality of life in Glastonbury. Town sponsored programs, public parks and open space work together to meet the diverse needs and interests of the community and its members.

Several park improvements were initiated this year. Phase II of a multi-year program to replace outdated spectator seating and park benches in public parks was initiated. With volunteer support from Casella Custom Excavating, pedestrian walkways were installed in Addison Park. The Highway Department repaved the parking lot at Grange Pool. The Naubuc School PTO, with support from the park maintenance staff, installed a new children's playground for pre-k and kindergarten students. Department staff completed street tree plantings on Rankin Road, Hubbard, Welles and Main Streets, as well as, Glastonbury Boulevard. A new practice green opened at Minnechaug Golf Course in May. New outdoor portable staging was purchased to support community wide special events and the arts.

Construction of a new 21,000 square foot community center continued throughout the year with an anticipated opening in August 2005. The center serves as an anchor for the Town's plans to develop a riverfront park between Naubuc Avenue and Town Hall. State and Federal permits were received for Phase 1 of the riverfront park. The project borders the Connecticut River and includes areas for both active and passive recreation, as well as, conservation. Active facilities include a fairgrounds, walking trails, a lighted baseball field, athletic fields, and a covered picnic pavilion. Local approvals are expected in late 2005, and a public referendum is anticipated in 2006. State and Federal grant assistance is anticipated, as is support from the Little League, Hartwell Soccer Club, and a host of local groups and civic clubs.

The Town received continued funding through the Drug Free Communities Grant Program in the amount of \$75,000. Over four years, the Town has received \$375,000 for the initiative, which supports the Substance Abuse Prevention Coalition, GLAD, Teen Center, and a wide range of prevention initiatives.

Special events continued to be one of the highlights of the year. They are many and varied. The Fine Arts Commission hosted a performance of the Hartford Symphony Orchestra on May 27th. Over 350 people attended the concert, which was funded with donations from more than thirty local businesses and individual donors. In June, the first annual "Touch-A-Truck" event was held. Co-sponsored with Town Center Initiatives, Inc., children of all ages were able to make believe drive the big rigs. Santa's Run, the 3.5 mile road race co-sponsored with Quality Name Plate and New Alliance Bank, continues to be a well attended family holiday tradition in Glastonbury

Other programs, for residents of all ages, continue to be well received. The outdoor swimming areas, Eastbury Pond and Addison and Grange Pools, continue to be popular destinations during the dog days of summer. The Summer Music Series, co-sponsored with the Chamber of Commerce, makes the Hubbard Green the place to be on Wednesday evenings in July. Numerous competitive sports opportunities are offered for youth and adults alike including tennis lessons, junior team tennis, swim team, youth basketball, co-ed soccer, men's, women's and co-ed softball, gymnastics and volleyball. Opportunities that contribute to a healthy lifestyle include aqua fitness, adult exercise class, aerobics, pilates, yoga, senior citizen exercise and fun runs. The Town's comprehensive, year-round program offers a wide variety of activities of interest to residents.

As the Town's population continues to grow, the department is challenged to meet the increased demand for recreation services. Virtually all of the Town's youth sports programs have expressed interest in having additional lighted athletic fields. The indoor pool at the high school is fully programmed and used to its maximum potential. Additional park land is needed for the development of active recreation areas. Access to the Connecticut River for recreation continues to be a high priority for Glastonbury residents. The new community center will help meet the need for indoor programming space especially during mid-week daytime hours. The new tennis courts being built as part of the high school renovation, including four with lights, will significantly improve playing conditions.



As budget pressures mount, the Department continues to be diligent in its efforts to provide programs and services in a cost effective manner. Increased emphasis is also being placed on revenue generating activities while keeping programs affordable for all.

Looking ahead, several projects are planned for implementation in the next 12-18 months. The picnic pavilion in J.B. Williams Park is scheduled to have its roof replaced, and a new skating shelter will be built adjacent to the lower pond. Efforts are being made to install lights at the basketball courts in Welles Park. The Center Green is slated to receive new park benches, trash receptacles, and upgraded lighting. Working with the Bicycle Advisory Committee, plans are being developed to systematically improve conditions and facilities for cycling and to make Glastonbury a bicycle friendly community.

Many thanks to the dedicated staff, boards and commissions, community service clubs, private businesses, donors, and volunteers, whose contributions make Glastonbury a great place to live, learn, work and do business.

Senior Services

The Senior and Community Services Division of the Human Services Department operates as a community focal point for the coordination of multi-purpose services and programs for persons living independently or with families in the community. The Senior and Community Services Division services individuals of all ages in order to promote independence, personal enrichment, and an enhanced quality of life.

The principal programs, services, and activities offered by this division are:

- Outreach Social Work Services to Seniors, Disabled Adults and Financially at Risk Residents
- Senior Center Programs
- Dial-A-Ride Transportation
- Senior Lunch Program

- Friendship Circle Social Model Day Program
- Extensive Outreach & Program Volunteer Opportunities
- Tax Relief
- Energy Assistance
- Holiday Giving Programs
- Back-to-School Supplies & Services
- Substance Abuse Prevention Services

Senior Services provides a wide variety of services and programs to Glastonbury's older residents. The Dial-A-Ride program provides accessible in-town transportation for seniors and disabled adults. The department also offers seniors a nutritious lunch program Monday through Friday. The Senior Outreach Program helps frail and homebound seniors access the information and services needed to remain independent in the community. A variety of town sponsored cultural, recreational and wellness programs are offered at the Senior Center and at various locations throughout the town. The Friendship Circle is a program for frail seniors which offers stimulating mental and physical activities in a structured, supervised setting. Information on services and programs for seniors is available through a monthly informational newsletter, The Sharing Tree, which is distributed to approximately 1900 Glastonbury households.

The Senior Services Volunteer Program helps the community face the challenge of providing necessary services with limited resources. Approximately 125 volunteers donate their time and talents to offer a wide of services that benefit the Glastonbury seniors.

Social Services strives to promote the well-being, self-sufficiency and quality of life among Glastonbury residents by administering various programs and initiatives which provide individuals and families with the necessary support and opportunities to realize their fullest potential.

Substance Abuse Prevention Services monitors and coordinates community substance abuse prevention and intervention initiatives and programs. This includes youth prevention and education programs, parent/adult substance abuse education programs,

(continued on page 12)



Human Services

Senior Services *(continued)*

and senior education programs. The Prevention Coordinator is available to provide professional development and education to community groups upon request.

Some of the Departments accomplishments of the past fiscal year include the following:

- Provided Outreach Social Work Services to 946 seniors and their families. This program assists seniors in maintaining their physical, social and financial independence by providing information, referral, and in-home support services to seniors and their families.
- Provided 16,945 rides to senior and disabled adults through the Dial-A-Ride program.
- Increased participation in Senior Center Programming by 23% by offering new programs and initiatives.
- Provided food and toys to 194 families with children through the Thanksgiving Basket and Holiday Toy Shop Programs.
- In cooperation with the Police Department, developed the Youth Advisory Board.
- Provided 6 Substance Abuse Prevention community events.

Youth & Family Services

Glastonbury Youth and Family Services coordinates, supports and delivers services to youth and families in the Glastonbury community with children and young adults under the age of twenty-one. Our mission is to serve Glastonbury youth and families by striving to exceed client expectations by providing positive development opportunities to empower youth and their families. Youth and Family Services has three program areas: Clinical Services, Creative Experiences, and Outreach Services.

This year **Clinical Services** provided counseling services to 864 individuals and 390 families. Throughout the year the staff conducted ten student groups at both the elementary and secondary school levels; offered four Parent Education and Support groups for parents of elementary aged children and parents of adolescents; and provided seventeen classroom presentations on a variety of positive youth development topics.

In addition, over two hundred parents attended the main event of the Parenting Education Forum series when Harvard child and adolescent psychiatrist, Dr. Ned Hallowell spoke about the Childhood Roots of Adult Happiness. Other professionals involved in the 2004-05 Parenting Education Forum were as follows: Dr. Ilene Grueneberg – *Connecting With Your Child: Optimizing Your Ability to Have a Great Relationship*; Kim Herwerth – *Parenting Tips on Teaching Boundaries and Personal Safety for Children and Adolescents*; Ginny Burgess – *Exploring Discipline that Works for Children and Teens*; Dr. Gary Isenberg – *Through the Eyes of a Neuropsychologist: Understanding a Child's Learning Style As Well As the Teaching Style that Fits Best*.

Creative Experiences offered three dramatic presentations throughout the year: *Once on this Island*, the summer production, *Godspell*, the fall production, and *Robinhood Meets Cinderella*, the spring production, performed by the Peter Pan Players. Other programs coordinated by Creative Experiences are: Youth Services Action Group (YSAG) which is a service learning opportunity involving students in grades 7-12 that meets weekly to plan and execute community service projects; Pass It On is the student run community television program; and Odyssey of the Mind is a creative problem solving team experience.

Outreach Services provided on-site programming at Glastonbury High School, Smith Middle School, and Welles Village. The outreach workers provided short term individual support services to students at the middle and high school during the school year. In addition, numerous informal contacts were made in the school cafeteria and hallways.

The High School Outreach Services worked with adolescents through various programs such as Peer Education, Peer Support, Peer Mediation, and Time Management. The Middle School Outreach Services worked with adolescents and children through Peer Mediation, Ropes Program, After-School Programming, and the Coffee House. Coffee House is done in collaboration with Parks and Recreation and GLAD.



End of Summer Party for participants in the Summer Reading Program, Lights! Camera! Read!

The summer of 2004 marked the 14th year for the W.A.C.Y. Program. Welles Village Activities Council for Youth is a summer activity and leadership training program for youth ages 7–18 living in Welles Village. Twenty-seven teenagers participated in the leadership training program and twenty nine, 7-12 year olds participated in the summer activity program. The program continues to be a collaborative effort between Youth and Family Services, the Housing Authority and Police Department – Youth Division.

Welles-Turner Memorial Library

The Welles-Turner Memorial Library maintains a collection of print and non-print materials to inform, educate and enrich the community. The current collection contains approximately 136,000 volumes. Users are able to access their accounts as well as check the online catalog and renew materials from the comfort of their home computers simply by visiting the Library web page: www.wtmlib.com.

The Library has approximately 65 computers, 30 are available for the public to use. Many of these computers have Internet access, word processing and spreadsheet programs. This year, the Library became a “hot spot” with the introduction of wireless Internet access in the public areas. Users are welcome to bring their wireless enabled laptop computers and hook into high speed Internet access.

We also introduced two (2) self check stations: one (1) on the first floor, across from the Lending Desk and the second one on the second floor, near the Reference Desk. Users are encouraged to use the self check stations and avoid long lines at the Lending Desk.

Other accomplishments for 2004/2005:

- Users borrowed 55,403 items.
- Approximately 1,350 readers starred in the Summer Reading Program, “Lights! Camera! Read!”

- The World of Words program during April featured the literature and culture of Mexico. Fiesta Del Norte kicked off this year’s celebration with a selection of Mariachi music.
- Introduced a successful Mother Goose program for babies and parents/caregivers. This program uses short rhymes, songs, finger plays and books to introduce babies to the wonders of language. There is a companion program that involves siblings in this process.
- Glastonbury Reads A Book selected *Fahrenheit 451* by Ray Bradbury as the book for Glastonbury to read. Mr. Bradbury visited Glastonbury via telephone and shared his insights on the book.
- The Library maintained a Hennnen’s American Public Library Rating (HAPLR) in the 94th percentile of all public libraries in its Population Category, 25,999 – 49,999.
- The Library Director serves as a liaison to the Library Board, Friends of the Library and the Second Century Fund.

Library Hours:

Sunday:	1 – 5 p.m.
(Sunday after Labor Day – Sunday before Memorial Day)	
Monday, Tuesday, Thursday	9 a.m. – 9 p.m.
Wednesday	Noon – 9 p.m.
Friday	9 a.m. – 6 p.m.
Saturday	9 a.m. – 5 p.m.

South Glastonbury Public Library

The South Glastonbury Public Library, incorporated in 1926, is located in a former Methodist church building at 80 High Street. It is the oldest church building in Glastonbury. Dating to 1828, it is on the National Register of Historic Places. The building housed an active congregation of mill workers until it disbanded in 1843. It later served as a church for black workers and was the site of many abolitionist meetings. The building eventually became privately owned and was turned over to the newly incorporated library board in 1926.

(continued on page 14)



"Little Red" is located on Neipsic Road in East Glastonbury.



Human Services

South Glastonbury Library *(continued)*

The Library has a large adult collection, featuring both fiction and non-fiction. There is an emphasis on acquiring first novels. There is also an excellent collection of books for preschoolers through teen years.

In addition to a varied periodical collection, the Library houses two very special groupings of books. One is the Kinne collection that contains books on Early American arts and crafts. The other is the Hodge collection that has an emphasis on all aspects of nature. These books are available for four-week loans.

The Library is staffed by volunteers and is overseen by a Board of Trustees who manages policy and finances.

The Library is funded by an annual grant from the Town of Glastonbury and an annual fund drive for private gifts and donations.

Library Hours:	
Sunday:	2 – 4 p.m.
Monday – Friday	1:30 – 3 p.m.
Monday, Wednesday, Thursday	7 – 8:30 p.m.

East Glastonbury Public Library

The East Glastonbury Public Library, affectionately known as "Little Red", is a Connecticut nonprofit corporation incorporated in 1960. The Library was incorporated to provide a library for the newly opened Eastbury Elementary School by the parents of the children who attended the school.

East Glastonbury Library is located on Neipsic Road, next to the Eastbury Elementary School. The building was built in 1889, without a foundation, as a one room school house. In 1900 a second room was added and a foundation was built under the enlarged school. Eight grades were taught there, four grades and one teacher in each room. The Library continued as an elementary school until Eastbury school was built. For a brief time it was also used by the Vo-Ag department of the High School. In 2002, the building was declared a Historic Building by the State of Connecticut.

Little Red has grown over the years into a full service library, serving the whole community of Glastonbury. It is completely staffed by volunteers and funded by the Library Board of Directors, an active Friends group, an annual grant from the Town of Glastonbury and by private gifts and donations. The Friends group holds a used book sale every fall and a Book, Bake and Bric-a-Brac sale every spring to raise money for the expressed purpose of purchasing books for the Library.

One of two rooms houses a very large collection of children's books including a small adjoining room dedicated to easy to read and picture books for the very young.

Many classes from the Eastbury School, with their teachers, make use of this facility on a weekly basis. The other room is home to a collection of adult fiction and non-fiction, magazines and newspapers. Most best sellers are available as are travel books, cook books, reference books and much more. There is also a small collection of videos and audio tapes.





Facilities Maintenance Maintenance & Services

The Library sponsors a Book Study Group which meets on Wednesday afternoons and is open to anyone interested. In the summer the Library sponsors a Summer Reader's Program which is very popular with pre-school, elementary and middle school programs. There is also a special summer program for children who will be entering kindergarten at Eastbury School in the fall. Starting in January of 2005, a children's story time will take place on Monday mornings.

The Library also mounts special displays in the foyer. A different collection, provided by a Glastonbury resident, is featured every two months. The displays are intended to reflect the interests of library visitors. Some recent displays have included beautiful seashells and china tea cups.

Our address is 1389 Neipsic Road in East Glastonbury. For more information, please call 860-633-5637.

Library Hours:

Monday:	1 p.m. – 4 p.m. / 7 p.m - 9 p.m.
Tuesday:	9 a.m. – 4 p.m.
Thursday	9 a.m. – 4 p.m. / 7 p.m - 9 p.m.

The Facilities Maintenance and Services Department is responsible for operations, maintenance, management, and construction of over 250,000 square feet of facilities as well as management of design and construction of all municipal building projects. The Department performs or manages preventive maintenance, custodial services, and project design and construction management using skilled in-house staff and contracted service providers. The Department also manages over \$1 million in utility and communication accounts for all Town facilities.

In addition, the Department is responsible for bidding, managing, and inspecting a variety of contracted services and vendors for all Town agencies.

All public building projects are managed by the Department, which also provides staff support to the Public Buildings Commission.

Highlights from the previous year include:

- Broke ground for the Glastonbury High School additions and renovations.
- Renovated the Police Department dispatch and office areas and replaced the elevator.
- Installed new air compressor and gear washer for the Fire Department.
- Managed the Naubuc School gym floor and siding replacement.
- Relocated the Parks & Recreation gymnastics program.
- Renovated the Town Hall archives storage.



Center Village

Housing Authority

The Housing Authority currently administers a total of 445 assisted dwelling units within the Town of Glastonbury. These include the following housing developments: Welles Village, Center Village, Village Green, Herbert T. Clark House Congregate and Assisted Living, and Section 8.

In addition, the Housing Authority also serves as the administering agency for the Town of Glastonbury's Moderate Price Housing program, and staff for the Town's Fair Rent Commission.

Recent Activities

During the past year, the Housing Authority has pursued a number of projects. These have included:

- The Housing Authority received \$359,012 in funding from the U.S. Department of Housing and Urban Development Capital Grant Program for modernization work in Welles Village. This funding will be used for bathroom and kitchen renovations in vacant units.
- The Housing Authority recently completed installation of a service driveway and other landscape renovations at the community building in Welles Village.
- Continuation of the Welles Activity Council for Youth (W.A.C.Y.), in conjunction with the Town's Department of Youth and Family Services.
- The Herbert T. Clark House Auxiliary raised over \$700 through the State of Connecticut's Neighborhood Assistance program, and from private donations. The Auxiliary is a way for the Glastonbury community to provide needed support for our housing programs, since most operations are not subsidized.

Schedule of Meetings

The Housing Authority of the Town of Glastonbury meets the third Wednesday of the month at the Main Office, 25 Risley Road, Glastonbury, CT 06033 at 5:45 P.M. The meetings for 2006 are as follows:

- January 18, 2006
- February 15, 2006
- March 15, 2006
- April 19, 2006
- May 17, 2006
- June 21, 2006
- July 19, 2006 (Annual Meeting)
- August 16, 2006
- September 20, 2006
- October 18, 2006
- November 15, 2006
- December 20, 2006

SPECIAL PULL-OUT SECTION

TOWN OF GLASTONBURY Organizational Chart

Town Manager
Richard J. Johnson

Chief of Police
Thomas J. Sweeney

Community Development Director
Kenith E. Leslie

Director of Finance and Administrative Services
Diane M. Waldron

Director of Human Resources
Patricia C. Washington

Town Engineer, Manager of Physical Services
Daniel A. Pennington

Director of Building Services
Herbert L. Schwind

Assessor
David L. Valente

Assistant to Town Engineer
Stephen A. Braun

Building Official
Edward P. Pietrycha

Civil Preparedness
Robert F. DiBella

Collector of Revenue
Norman Z. Rosow

Controller
Nina R. Cousins

Director of Health
David W. Boone

Director of Parks and Recreation
Raymond E. Purtell

Fire Chief
Matthew G. Nelson

Fire Marshal
Christopher N. Siwy

Fleet Superintendent
Thomas O. Tierney

Physical Services Operations Manager
Eric E. Hood

Housing Authority Director
Ivan M. Pour

Director of Human Services
Patricia R. Schneider

Library Director
Barbara J. Bailey

Information Systems & Technology Coordinator
Robert L. Ashton

Purchasing Agent
Mary F. Visone

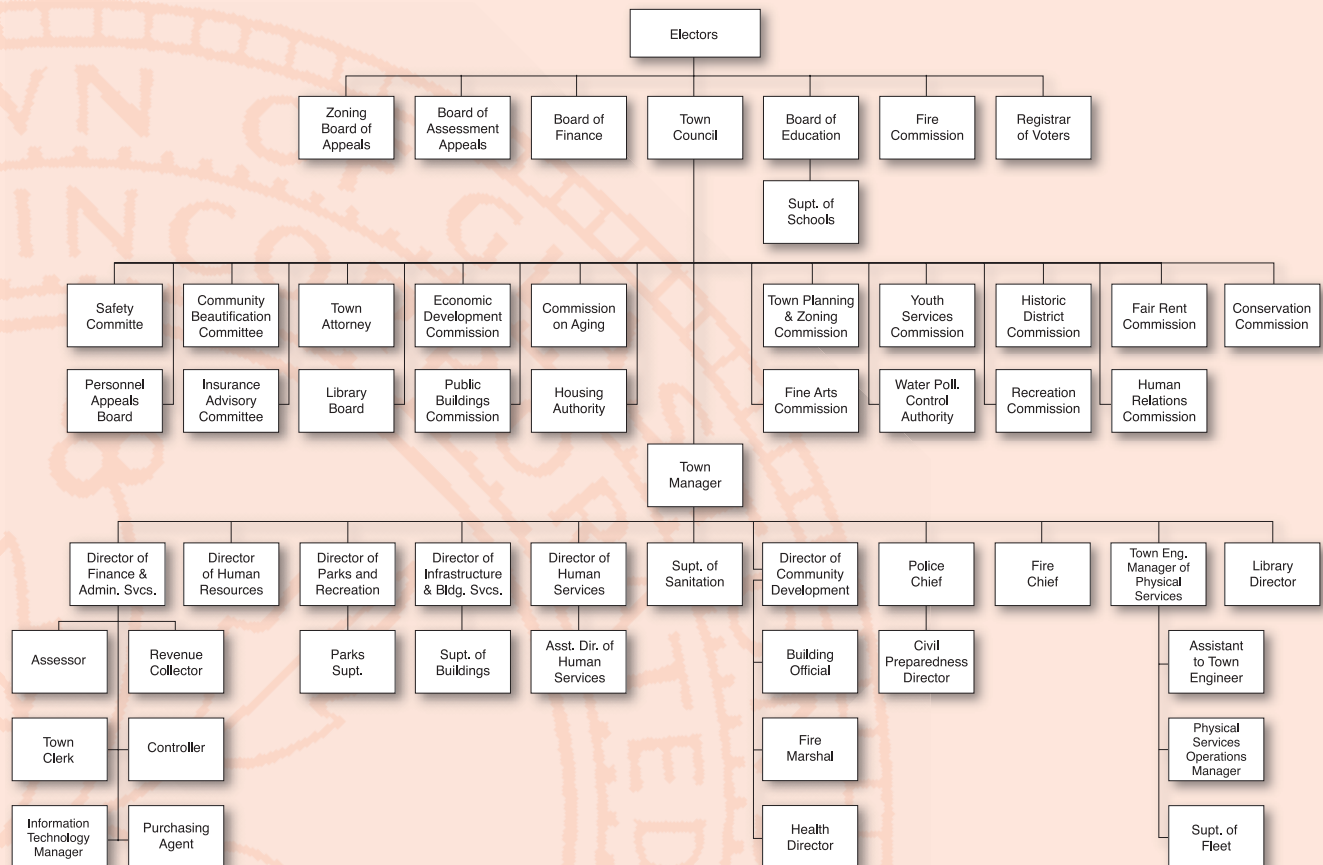
Superintendent of Buildings
David Sacchitella

Superintendent of Sanitation
Michael J. Bisi

Town Attorney
Bruce Chudwick

Town Clerk
Joyce P. Mascena

Assistant Director of Human Services
Ann Grabowski



SPECIAL PULL-OUT SECTION

Dates to Remember

Financial Administration

January 22 Annual Town Meeting
March 18 Final Budget Hearing

Property Assessment

February 20 Deadline for filing written appeals to Board of Assessment Appeals
October 1 Annual Assessment Date: Property owners listed in Grand List
November 1 Last day to file business personal property declarations with assessor

Revenue Collection

(For your convenience, credit card payments are accepted at www.officialpayments.com. In addition, a drive-up/drop-off payment box is located in the circle by the flag poles at Town Hall).
January 1 Second Installment of 2003 Grand List Taxes become due. The taxes include real estate, personal property and supplemental motor vehicle.
July 1 First Installment of 2004 Grand List taxes become due.
November 1 Sewer use bills become due.

Town Clerk

April 17 Fishing season opens
June 1 Dog Licenses become available for the next fiscal year
August 10 Primary for the November 2 election if a challenge is filed
October 1 Absentee ballots for November election become available in Town Clerk's office
October 16 Hunting season opens
October 19 Last day to register to vote in order to vote in the November election (except for those who move to Town, turn age 18, or become a U.S. Citizen after this date).
November 2 Election Day

Social Services

February 2 Homeowners' and Additional Veterans' Tax Relief Programs begin
March Camp CONNRI and Channel 3 Country Camp applications available
April 30 Last day to apply for Energy Assistance benefits
May 14 Last day to apply for Homeowners' Tax Relief
May 17 Renters' Tax Relief Program begins
May 31 Last day to apply for Operation Fuel benefits
July & Aug. Back-To-School promotional programs
September 15 Last day to apply for Renters' Tax Relief.
October 1 Last day to apply for Additional Veterans' Tax Relief benefits.
October 15 Energy Assistance application period begins.
November 18 Thanksgiving food baskets distributed (tentative).
December 1 Operation Fuel application period begins.
December 13, 14 & 15 Annual Toy Shop (tentative).

Refuse Disposal

April 7 Extended operating hours for Transfer Station ONLY during Day Light Savings time begin, Wednesdays 7:00 a.m - 7:00 p.m.
September 15 Modified Day Light Savings hours, Wednesdays 7:00 a.m. - 6:00 p.m.
October 27 Last Wednesday of Transfer Station extended operating hours

Household Hazardous Waste Collection schedule for Spring and Fall 2003 will be provided in the local newspaper, mailers and on the Town's website.

Water Pollution Control Division

November 1 Sewer Use payments due.

Youth & Family Services

February 28 Charity Cabaret, Gideon Welles School, 7-10PM
June 4 "Destination Imagination", Gideon Welles School, 7:30PM
August 12, 13, 14 Summer Show, TBA, Smith Middle School

SPECIAL PULL-OUT SECTION

Community Events 2006

Apple Harvest Festival 2004

October 14 & 15

Welles-Turner Memorial Library Events

National Library Week	April 2-8
Book Sale	May 13, 9AM – 5PM
Library Card Sign Up Month	September
Book Sale	May 13, 9AM – 5PM, September 9, 9AM – 5PM
Banned Book Week	September 23-30
Teen Read Week	October 22-28
Children's Book Week	November 13-19

Fun Runs (Tuesday evenings) 6:30 p.m. GHS – June 27, July 11, July 18, July 25, August 1, August 8, August 15

Kid's Pooch Pageant July 10, 6:00 p.m. Hubbard Green - Pre-registration required

Santa's Run 3.5 Mile Run December 3, Noon GHS (Snowdate Sunday, December 10)

Senior Picnic

Hubbard Green August 4 (tentative) Festivities begin at 9:30 a.m.

Summer Music Series

Hubbard Green, Wednesdays 7:00 p.m. – July 5, July 12, July 19, July 26

Town Band Concert

Hubbard Green, Sundays 7:00 p.m. – July 9, July 16, July 23, July 30

Boards and Commissions Meeting Schedule

Town Council	2nd and 4th Tuesdays	Town Council Chambers
Board of Education	2nd and 4th Mondays	Town Council Chambers or GHS Library
Board of Finance	3rd Tuesday	Town Hall Meeting Room, 2nd Floor
Town Plan & Zoning Commission	1st and 3rd Tuesdays	Town Council Chambers
Board of Assessment Appeals	As required	Town Hall
Building Board of Appeals	As required	Town Hall
Commission on Aging	1st Monday	Senior Center, 17 Hebron Avenue, 1st Floor
Community Beautification	2nd Wednesday	Town Hall Meeting Room, 2nd Floor
Conservation Commission	2nd and 4th Thursdays	Town Council Chambers
Economic Development	1st Monday	Office of Community Development, Town Hall, 3rd Floor
Fair Rent Commission	As required	Herbert T. Clark House, 45 Canione Road
Fine Arts Commission	2nd Monday	Glastonbury High School, Room 136
Fire Commission	1st Thursday	Fire Company #1, 2825 Main Street
Historic District Commission	As required	Town Hall
Housing Code of Appeals	As required	Town Hall
Human Relations Commission	Quarterly	Town Hall Lunch Room, 2nd Floor
Insurance Advisory Committee	Quarterly	Engineering Conference Room, Town Hall, 3rd Floor
Public Buildings Commission	1st Wednesday	Town Hall Meeting Room, 2nd Floor
Public Housing Authority	3rd Wednesday	Herbert T. Clark House, 45 Canione Road
Recreation Commission	3rd Thursday	Parks and Recreation, 1086 New London Turnpike
Safety Committee	4th Monday	Town Hall Meeting Room, 2nd Floor
Water Pollution Control Authority	2nd and 4th Wednesdays	Town Council Chambers
Welles-Turner Library Board	2nd Monday	Welles-Turner Memorial Library, 2407 Main Street
Youth and Family Services Commission	2nd Wednesday	Youth and Family Services, 321 Hubbard
Zoning Board of Appeals	1st Monday	Town Council Chambers

NOTE: Please contact the Town Clerk's Office at 652-7616 to confirm dates, times and locations as some schedules change due to holidays.

SPECIAL PULL-OUT SECTION

Town Departments 2006

For Information

General Information
Accounts Payable
Administration
Assessment
Assessment
Birth Certificates
Building Permits
Bulky Waste Disposal
Children's Department
Civil Preparedness
Death Certificates
Deeds
Demolition Permits
Facilities & Food Services Dir.
Dial-A-Ride
Dog Licenses
Dog & Animal Problems
Drainage Problems
Electrical Permits
Elderly Municipal Agent
Energy/Fuel Assistance
Engineering
Facilities Services
Financial Administration
Financial/Medical Assistance
Fire Chief
Fire Marshal
Food Bank
Health Matters
Highways
Housing Authority Comm.
Inland Wetlands
Landfill Permits
Libraries

Marriage Licenses
Nursing
Passport Information
Personnel
Planning
Plumbing & Heat Permits
Police (General Information)
Probate Court
Recreation
Recreation Schedules/Cancellations
Refuse Disposal/Recycling
Refuse Disposal/Recycling
Registration of Voters
Salvation Army
Sanitary Inspection
Senior Center
Sewer Department/
Water Pollution Control
Sewer Use Bills
Snow Removal & Streets
Social Services
Taxes
Taxes
Tax Relief Program
Trees
Voting
Youth & Family Services

Call

Information Center
Accounting
Town Manager
Assessor
Info Line
Town Clerk
Building Office
Sanitation
Welles-Turner Library
Civil Preparedness
Town Clerk
Town Clerk
Building Office
Brad Devlin
Senior Services
Town Clerk
Animal Control Officer
Engineering
Building Office
Senior Services
Social Services
Engineering
Facilities
Administrative Services
Social Services
Fire Department
Fire Marshal
Social Services
Health Department
Highway Superintendent
Housing Authority
Community Development
Engineering
Welles-Turner
S. Glastonbury
E. Glastonbury
Town Clerk
Visiting Nurse Assoc.
Probate
Human Resources
Community Development
Building Office
Police Department
Probate Clerk/Judge
Recreation Department
Info Line
Info Line
Office
Registrar of Voters
Social Services
Health Department
Senior Services

Sanitation
Sanitation
Highway Superintendent
Social Services
Collector of Revenue
Info Line
Social Services
Parks and Recreation
Registrar of Voters
Youth & Family Services

Phone

652-7710
652-7595
652-7500
652-7600
652-7606
652-7616
652-7521
652-7772
652-7718
652-7576
652-7616
652-7616
652-7521
652-7948
652-7643
652-7616
633-8301
652-7735
652-7521
652-7642
652-7638
652-7735
652-7703
652-7586
652-7638
652-7555
652-7526
652-7638
652-7534
652-7749
652-7568
652-7510
652-7735
652-7719
633-4793
633-5637
652-7616
633-3521
652-7630
652-7501
652-7510
652-7521
633-8301
652-7629
652-7679
652-7689
652-7790
652-7772
652-7627
652-7638
652-7534
652-7642

652-7772
652-7772
652-7749
652-7638
652-7614
652-7606
652-7638
652-7679
652-7627
652-7661

Board of Education

Central Office

General Information
Superintendent of Schools
Assistant Superintendent (Acting)
Business Manager
Facilities & Food Services Dir.
Transportation

Curriculum

Art
Athletics
Career/Vocational Education
Foreign Language
Language Arts/Reading
Mathematics
Music/Patricia Lignelli
Physical/Health Education
Science
Social Science
Guidance Dept./Director
Special Education (Elem.)
Special Education (6-12)

Glastonbury High School
Principal

Smith Middle School
Principal

Gideon Welles School
Principal

Buttonball School
Principal

Eastbury School
Principal

Hebron Avenue School
Principal

Hopewell School
Principal

Naubuc School
Principal

East Hartford/Glastonbury
Magnet School Principal

Two Rivers Middle Magnet School
Principal

Contact Person

Alan Bookman
Jeffrey Kitching
Sharon Smith
Brad Devlin
Angelo Balesano

Director

Daniel Roach
Barbara Startup
Gary Nolf
Christine Brown
Richard Dlugos
Michael Landry
652-7956
Jean Mee
Kenneth Roy
Deborah Williard
Linda Roberts
Diane Goncalves
Leslie Roulier

Matt Dunbar

Thomas Russo

Frances Maynard

Patricia DaSilva

Sheryl Harriman

Linda Provost

Karen Loiselle

Catherine Colavecchio

Glen Peterson

David Pearson

Town Web Site

www.glasct.org

**FIRE, POLICE & EMERGENCY
Routine Calls to Police Department**

**DIAL 911
633-8301**



Community Development Great Pond Stewardship Committee

The Great Pond Preserve located off Great Pond Road in South Glastonbury is a very special natural area managed by the Great Pond Stewardship Committee.

Today, the Great Pond Preserve is an example, in microcosm, of the non-native invasive plant problem which also exists in many other parts of town. Major invasives there include: bush honeysuckle; Oriental bittersweet; Japanese barberry; winged euonymus; autumn olive, and an occasional outbreak of purple loosestrife. This year the Stewardship Committee focused particularly on battling the Oriental bittersweet which in places was growing into the crown of 50-foot trees with 30-40 year-old vine stems up to 3" in diameter; over time such vines injure and can even kill the trees. Attempts to control the bittersweet so far found that cutting the vines merely promotes robust regrowth and alternative, more effective remedies will need to be explored. The Stewardship Committee is also participating in an invasive plant study sponsored by New England Wildflower Society and the University of Connecticut.

Also during the year the Connecticut Department of Transportation addressed an erosion problem caused by stormwater drainage from Route 17 flowing overland down to Grindle Brook and then into Great Pond. Their remedial actions should reduce siltation in Great Pond. This situation provides an excellent example of why continued vigilant stewardship within the entire Grindle Brook watershed is important in preserving Great Pond.

Community Development

The Department provides a wide variety of services through its 4 operating divisions: Building, Fire Marshal, Health, and Planning/Environmental Management. Principal activities include building inspection and zoning enforcement; fire code inspections, fire prevention and fire investigations; well and septic system review and approval, food service licensing and inspection, health education and prevention; land use planning, environmental protection, and economic development planning. Significant staff services are provided to a variety of volunteer boards and

commissions such as the Town Plan and Zoning Commission, Conservation Commission, Zoning Board of Appeals, Economic Development Commission, and the Historic District Commission.

A major focus of the Department was the commencement of the Town Plan and Zoning Commission's review and development of the new Plan of Conservation and Development. This document is the municipality's chief planning policy document that will direct development during the 2116 period. Utilizing a workshop format, the Town Plan and Zoning Commission has received important review comments from citizens and community groups. It is anticipated that the project will be completed by midyear 06.

Other achievements of note include the following.

- Successful completion of State Open Space Grant applications resulting in significant open space funding to the Town.
- Continued expanded public information efforts to enhance understanding of important health matters such as child safety, cholesterol reduction, influenza, healthy eating and living wills.
- Expanded our local "Health Alert Network" (HAN) to nearly 50 local medical providers who are readily available and trained to provide essential information during public health emergencies.
- Continued detailed planning on bioterrorism response plans in advance of a Strategic National Stockpile drill planned for April 2006.
- Implemented State of Connecticut Aquifer Protection Area covering the Gardiner Wellfield located in the southwest corner of Town.

Inland Wetlands/Watercourses

Glastonbury's most potent tool for preserving open space is ownership of the land. The second-most valuable tool is the Conservation Easement, which preserves acreage in its natural state on both privately and publicly held land.

(continued on page 22)



Human Services

Inland Wetlands *(continued)*

We are proud to report that between July 1, 2004 and June 30, 2005, our commission acquired from developers 50.97 acres of conservation easements and 18 acres of dedicated open space for the Town.

Unfortunately, we also dealt with many violations to such protected properties. A few landowners and neighbors ignore the protective covenants that preserve the natural features and proceed to remove the vegetation, expand yards, install pools, put up out-buildings, and dump yard wastes and trash.

When we learn of these violations, staff tries to – and often succeeds in – working with the violators to correct the trespass. When this does not work, the violators appear before the Commission, where we try to resolve the problem. Our tools include education, cease and desist orders, and restrictions on deeds.

We also ask citizens to alert the Office of Community Development when they think a violation may be occurring. Continued vigilance is necessary in order to preserve the many natural areas set aside to enhance our quality of life today and tomorrow.



Physical Services

The Physical Services Department is responsible for the maintenance and inventory of the Town's roadways and infrastructure. This includes existing systems as well as additions proposed through subdivision and site development.

Engineering

The Engineering Division performs design review of streets, traffic control systems, storm and sanitary sewers, sidewalks, and other public improvements proposed in conjunction with land development. Recommendations are made to appropriate Boards and Commissions of the Town. Following approval, the Division inspects the construction of the public improvements to assure conformance with Town standards.

The Division performs routine inspection of existing Town roads, drainage systems, and traffic control signs and signals. Public inquiries and comments are investigated to address potential problems or defects. Road, storm drainage, and sanitary sewer conditions and maintenance history data are maintained in the Road Manager data network. An ongoing program of obtaining and recording traffic counts and spot speed data is conducted by staff and pertinent data is shared with the Police Department.

Engineering is responsible for in-house design of public improvements or coordination with private consultants when used in conjunction with Town projects. The Division provides civil engineering services for all Town Departments and provides technical and clerical support to the Water Pollution Control Authority.

In addition, staff maintains property line, easement, and other pertinent mapping data in the Town's web-accessible Geographic Information System (GIS).

Some recent projects include:

- Design and construction of the new Board of Education Bus/Van Storage and Maintenance Facility on Oakwood Drive.



- Coordination and oversight of the soil remediation activities at the new elementary school site on Old Maids Lane.
- Designed and obtained regulatory approval for sidewalk construction on Welles Street and at various other locations in need of short, connecting pieces.

Highway

The Highway Division is responsible for maintenance, repair, and construction relative to streets, drainage systems, sanitary sewers, traffic controls, sidewalks, and other features of the Town's infrastructure system. Snow and ice removal and joint operation of the Bulky Waste sand and gravel facility are also primary functions. Overall maintenance and construction is accomplished through the use of in-house labor and equipment working in conjunction with contractual entities.

The winter of 2004-2005 provided a challenge for those involved in snow and ice removal. Staff responded to 19 storm events and logged 64,084 miles in the process of clearing our roadways of 94" of snow.

Other traditional Highway Division functions such as street sweeping, catch basin cleaning, roadside mowing, and road overlay were performed with positive results. The paving program in particular was successful in providing citizens with good road quality at relatively modest cost. Crews provided surface treatment to approximately 21.8 miles of roadway during 2004-2005.

Vehicle Maintenance

The Vehicle Maintenance Division's responsibilities include the repair and maintenance of all Town vehicles. This includes a wide variety of vehicles ranging from general purpose cars and police cruisers to school buses, fire apparatus, heavy trucks, and construction equipment. These services also include the installation of special equipment in the new police cruisers. Included within

the scope of these services are the very substantial efforts of repair technicians during snow and ice events. The rough duty encountered by plow trucks during snow storms results in a need for quick and knowledgeable mechanical diagnosis and repair in order to keep trucks on the road.

The Division prepares bid specifications for all Physical Services vehicle purchases and reviews specifications for all other Departments. Other Division responsibilities include garage environmental compliance and maintenance of a computerized Fleet Data Program that tracks maintenance activities and associated costs, thereby allowing for prudent decision-making when considering new equipment purchases. In addition, Vehicle Maintenance staff periodically coordinates public sale of obsolete parts and equipment to ensure maximum salvage values.

Water Pollution Control Authority

The Water Pollution Control Authority (WPCA) is responsible for reviewing and approving sanitary sewer connections and expansions, and for assessing future needs of the system.

The Water Pollution Control Authority levied assessments in the amount of \$505,591.91 in conjunction with their responsibility to recover the cost of sanitary sewer construction. Of this amount, \$483,996.02 was a result of new construction with the balance due to expansion or connection of existing facilities. During the past fiscal year, 58 new connections were made to the sewer system.

The engineering design of the Wastewater Treatment Plant is 75% complete. Review by the WPCA has been ongoing as design progresses. The WPCA also continues to review and adjust the sewer use rate structure in order to offset costs for the Plant rehabilitation.



Cleaning of clarifier tank at the Wastewater Treatment Plant



Turning of compost material at the Transfer Station

Sanitation

Water Pollution Control Division

The Water Pollution Control Division provides the continuous collection and treatment of sanitary sewage generated within the Town of Glastonbury in compliance with State and Federal regulations. In addition, this Division administers Sewer Use rates, ordinances and provides staff support to the Water Pollution Control Authority.

The following provides highlights of statistics for fiscal year 2004-2005:

- 855 million gallons of wastewater were processed averaging 2.34 million gallons per day.
- 3.3 million gallons or 708 tons of sludge were processed and disposed of, averaging 1.94 tons per day.
- 1,412,352 kilowatt hours of electricity was consumed at the Treatment Plant for the 24 hour per day operation, this is an average of 3,869 kilowatt hours per day.
- Water Pollution Control Facility Upgrades. Continue to work with the consultant on the design phase of the Facility upgrade project. This upgrade is required to replace old and worn inefficient equipment and to meet new State of Connecticut, Department of Environmental Protection (DEP) overall water quality to the Connecticut River and Long Island Sound.

Refuse Disposal Division

The Refuse Disposal Division operates solid waste disposal, recycling facilities and administers permits for private collectors, ordinances and operating guidelines for waste disposal facility users.

The following provides an overview of statistical data for the Refuse Disposal operation:

- 3,124 tons of Refuse was disposed of at the Transfer Station, 4,562 tons of Bulky Waste at the Bulky Waste facility and 4,513 tons of material was recycled.
- 36.5% of solid waste Town wide was recycled.
- 642 residents utilized the Regional Household Hazardous Waste Collection Facility during the year.
- Continued improvements to our leaf composting program including reconstruction of the roadway to the leaf composting area at the Transfer Station using no cost recycled asphalt grindings. This new roadway will allow efficient customer access to the disposal. Also implemented new limited Sunday hours in the Fall for public leaf drop off at the Transfer Station.
- Two new additional recycling programs were also implemented. A staffed Goodwill Donation Center and a *Reuse a Shoe* program sponsored by Nike to recycle athletic shoes.





The Glastonbury Police Department's fully modernized communications center.



Public Safety

Police Department

The Glastonbury Police Department is a nationally accredited law enforcement agency committed to providing service to our community in a professional and sensitive manner. In 1986, the Department was the first law enforcement agency in Connecticut to be accredited. In 2004, it was the first to achieve its fifth re-accreditation.

The Department consists of 57 sworn officers and 16 civilian support personnel. Patrol officers maintain a visible police presence and 7 day/24 hour response capability to incidents occurring in Town. The primary mission of the Patrol Division is to prevent and/or eliminate public safety problems. These officers are the primary contact between the Department and the public. They provide the critical first response to all crime, traffic and medical emergencies occurring throughout the Town. The nature of the work requires these officers to be highly trained and to flexibly readjust to handle a wide variety of complex situations.

While the Town's population has continued to grow, the level of cases handled by the Department has remained fairly constant for the past several years. During FY 04/05, the Department handled 17,006 cases. This was a decrease of 9.3% over the prior year. The major elements of that caseload are broken down as follows:

Traffic	6,847
Services	6,995
Criminal	3,873

Among these cases, in a normal year, the Department's personnel will respond to about 1400 calls for medical assistance and 1000 calls involving animal related problems.

The Town's crime rate has historically been one of the lowest in the State of Connecticut. While the Town's population has grown by over 31% since 1985, the rate of serious crime has declined by 46.2% during the same period. In November 2004, the Town was recognized by *Hartford Magazine* as having the lowest crime rate in the Capitol Region.

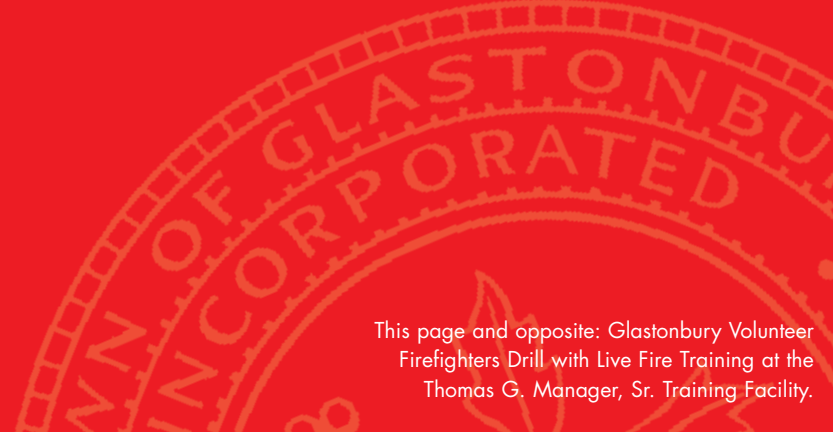
The Department places great emphasis on issues pertaining to youth. Full time School Resource Officers are assigned to the Middle and High Schools. In addition to enhancing school safety, the officers are in daily contact with youth. While they may occasionally take enforcement action, their primary focus is on preventing problems for youth and discouraging their involvement with crime and/or substance abuse. Working with the Town's Substance Abuse coordinator, youth officers during the last fiscal year helped the Town establish and launch the Youth Advisory Council which gives young people in Town a forum to formally raise issues of concern or programs of interest to youth.

Youth officers teach the DARE curriculum to all students in the sixth grade. Instruction on internet safety is presented to fifth grade students and anti-bullying programs are implemented in the fourth grade and middle school. A youth officer is assigned part time to the FBI's Innocent Images Task Force. That officer's investigative efforts have been highly successful in arresting and prosecuting Internet pedophiles.

The Department maintains a high priority emphasis of drunk-driving enforcement. Consistent with its strong emphasis on prevention, the Department maintains a proactive posture in addressing the problems of underage drinking and substance abuse. This is accomplished by the continuing checks of establishments selling alcoholic beverage and tobacco to ensure compliance with laws governing sales to minors. High priority is maintained to enforcing the Town's Alcohol Ordinance against possession by a minor, or hosting parties where alcohol is served to minors.

During FY 04/05, the Department fully modernized its communications center which provides dispatching for police, fire and ambulance services in Town. State of the art radio consoles replaced twenty year old equipment. The renovations provide a more effective work environment for emergency dispatch and provide the space for the Department's communications capability to grow with the changing needs of the Town and the future requirements of public safety dispatching. With the implementation of the new dispatch center, the Department also

(continued on page 26)



This page and opposite: Glastonbury Volunteer Firefighters Drill with Live Fire Training at the Thomas G. Manager, Sr. Training Facility.



Public Safety

Police Department *(continued)*

automated its protocols for Emergency Medical Dispatching. These upgrades to the dispatch center provide an important front end for the overall upgrades of the Town's public safety radio system which is occurring in FY 05/06.

In an effort to curb the wasteful drain of police resources answering false burglar alarms, the Department implemented the Town's newly enacted Alarm Ordinance. Typically 99% of all alarms are false. The new ordinance attempts to curb the level of unnecessary dispatching of police units by imposing fees equivalent to the cost of such response upon alarm users who have repeated false activations. In addition to recouping Town costs, the first year of implementation appears to have been successful in reducing the level of false alarm dispatches by over 25%. That reduction allows police resources to remain focused on real problems of concern to the Town's residents.

Volunteer Fire Department

The Glastonbury Volunteer Fire Department is comprised of 130 dedicated men and women. Twenty four hours a day, seven days a week these brave volunteers are ready to answer your call for help. The members of the Glastonbury Volunteer Fire Department leave the comfort of their homes at any moment's notice to respond to emergency incidents and help their neighbors deal with their serious problems involving fire or rescue services. There are four fire stations, one modern fire training facility, and twenty fire department vehicles that respond to 900 calls for service each year to cover the 52 square miles in town.

The Glastonbury Volunteer Fire Department is also very proud of their role in the areas of fire prevention and public education. In the past year the department's fire prevention and education division, with the help of all the volunteer firefighters, has provided services at 51 events. From the school children to the seniors, from the scouting programs to our civic organizations, the Glastonbury Volunteer Fire Department has been there to help.

The Glastonbury Fire Company Organizations are an integral part of their community. They provide food vendor services, fire prevention demonstrations, and public education opportunities at nearly every major town event. They are active at the Apple Festival, the Memorial Day Parade, the "Walk for Life" to defeat cancer, the Special Olympics, and the Nayaug Connecticut River Canoe Races as well as many other events in your neighborhood.

The Fire Department is proud of its accomplishments in the training division. Each new volunteer firefighter goes through 150 hours of rigorous and challenging training to become permanent active members. This training includes certification by the Connecticut Fire Academy to the standards of the National Fire Protection Association for the level of Firefighter One. New members must also receive training in hazardous materials response, incident command systems, homeland security weapons of mass destruction, vehicle rescue, and the department's standard operating procedures. All permanent active members then must meet a standard of attending a minimum of twelve training drills each year to maintain their skills. The majority of the Glastonbury Volunteer Fire Department members also upgrade their training certification levels during their careers. The department has many members nationally certified as Fire Service Instructors, Fire Engine and Aerial Apparatus Operators, Emergency Medical Technicians, Incident Safety Officers, and Fire Officers.

In response to the threat of possible attacks against America, the fire department is continuing to upgrade their response capabilities in the areas of chemical protective clothing, hazardous materials monitoring, and regional response planning. This year the department formalized response planning in the Statewide Fire/Rescue Disaster Plan with the implementation of Task Force # 57. Task Force # 57 consists of three Engine Companies, two Ladder Companies, one Rescue Company, a Command Car, and 26 fire personnel from six surrounding communities that would respond to a major incident. The department also has five members in the demanding training program at the Connecticut Fire Academy for certification as Hazardous Materials Technicians. These members will participate in the Regional HazMat Team.



Emergency Management personnel assisted by Boy Scouts from Glastonbury Troop 540 provide Santa's Run race radio communications.



Public Safety

Volunteer Fire Department *(continued)*

The fire department has received 60 new Self-Contained Breathing Apparatus (SCBA) funded by a grant from the US Department of Homeland Security. The new SCBA have many upgraded features that will enhance our firefighter safety and they are rated for use in atmospheres containing chemical and biological warfare agents.

The department's Fire Police division is another source of great pride for the Glastonbury Volunteer Fire Department. The Fire Police members keep the firefighters safe at each emergency incident and assist the public to continue on their way without interfering in the fire department's operations.

The Fire Cadet program continues to flourish under the direction of several dedicated volunteer fire department advisors. The program for youth ages 14-18 provides the department with well trained firefighters at the age of 18. The fire cadets have the opportunity to explore the fire service and learn the important life skills of teamwork, discipline, and leadership.

The Glastonbury Volunteer Fire Department is always looking to recruit new members who share their desire to serve their community and would like to learn exciting new information and skills. If you are interested in this rewarding opportunity to become part of a great organization of compassionate neighbors, please call the Fire Chief's office at 652-7555.

Civil Preparedness

The Office of Civil Preparedness (Emergency Management) coordinates all emergency activities in times of man-made or natural disasters for the Town of Glastonbury.

The Office is active in planning for manpower, equipment and community needs by updating information, regulations and training, as well as conducting checks of materials and equipment, including the Town warning sirens.

In disaster situations, the office updates information and instructions to Citizens via its disaster information telephone number 652-

7578, as well as its radio station, WP11600 at 1570 AM, which is heard in Glastonbury, 24 hours a day, seven days a week. This station also provides citizens with public safety information concerning traffic aid emergency situations.

It also maintains a state-of-the-art mobile telecommunications van that is equipped to function as a backup system should the Town's main system fail. This van can also be used in the field to assist with 'command and control' operations in major incident situations. This van contains the I-TAC I-CALL 800 MHz Interoperable System. The Glastonbury Emergency Management Director is considered as the founder of this Interoperable System by State Public Safety Officials.

The Civil Preparedness staff has training in 'radiological monitoring' through the Connecticut Office of Emergency Management. It has radiological monitoring devices to meet peacetime homeland security concerns. Selected Civil Preparedness staff members completed training on the 'Hurricane' United States Government hurricane-warning program with which it monitors major weather events.

The Staff has taken all of the required National Incident Management System (NIMS) Courses and are certified by The Federal Government for Incident Management Mitigation. This is a national requirement by the end of 2006.

The Department maintains significant involvement in Regional and State Emergency Planning.

The Director was very involved in the \$3,100,000 enhancement to the Public Safety Radio Telecommunications System in Glastonbury.

The department is committed to continuing its involvement in Glastonbury Boy Scouting in Emergency Management projects to assist the development of youth, who are our future leaders.



The Glastonbury Volunteer Ambulance headquarters is located at 2112 Main Street.

Public Safety Volunteer Ambulance

The Glastonbury Volunteer Ambulance Association, GVAA, was established in 1957 and is committed to providing emergency ambulance service to the community 24 hours a day, 7 days a week, 52 weeks a year. More than 2,400 calls have been logged this year. Currently 2 "Super Duty" ambulances operate from our facility at 2112 Main Street (behind the police department). Each ambulance has a 2 or 3 person crew who in addition to basic emergency procedures can provide intravenous fluid therapy, advanced airway management, cardiac defibrillation and oxygen therapy.

GVAA members are state certified EMT's of varying levels and receive monthly training to update skills and keep abreast of new and ever changing requirements in their field. Members come from Glastonbury and the surrounding towns volunteering both their time and expertise to those in need. Typically GVAA members do three 12-hour shifts a month. When not responding to calls, crew members are at the ambulance quarters attending to the equipment, building and supplies.

Members pride themselves on providing the highest quality, most compassionate, and most dedicated emergency medical care to the residents and visitors of Glastonbury. GVAA also offers First Aid and CPR training to members of the community and surrounding towns.

GVAA is always looking for dedicated members to be a part of our team. To learn more about becoming a volunteer or about our organization, or to inquire about community based training please call 633-6554. You can also reach us at www.GVAA.org.

Administrative Services Administrative Services

The Administrative Services Department is responsible for the preparation of budgets, financial reporting, land records, property assessment, and the collection of taxes and sewer use fees. In addition, it oversees the acquisition of good and services, insurance procurement, legal services, debt issuance, voter registration management and coordination of computer services.

Board of Finance

The Board of Finance is a bipartisan Board which operates in partnership with the Town Council and the Board of Education. In its advisory role, the Board recommends an annual budget to the Town Council and recommends and/or authorizes transfers among and between accounts and funds during the fiscal year. By direct authority the Board establishes the annual mill rate of taxation after reviewing the final budget approved by the Town Council.

Financial Administration

This office coordinates the preparation of the operating and capital improvement budgets for the Town Manager. The staff works with the Board of Finance to review financial reports and make recommendations as requested to the Town Council and Town Manager. This office serves as staff liaison to the Insurance Advisory Committee in risk analysis and annual insurance renewals.

The Purchasing department researched and evaluated the copier requirements across all Town departments. A replacement program was implemented in conjunction with a cooperative contract from the State of Connecticut, Department of Administrative Services. The projected 5 year savings to the Town will be approximately 100K.

The town accomplished the following during this period: Obtained for the first time a AAA designation with Standard's & Poor and maintained an Aa1 designation with Moody's Investment Services for the Town, which is based on the Town's financial condition.



Received the Governmental Finance Officers Association (GFOA) budget award for FY04/05.

Received the Governmental Finance Officers Association (GFOA) budget award for FY03/04.

Accounting

The Accounting Division is responsible for providing complete and accurate financial information, in the proper format, on a timely basis. This division prepares the year-end comprehensive annual financial report and processes employee payroll, payables, and receivables. The division is also responsible for managing the Town's investments to maximize interest earnings in all funds and performing internal audit procedures to help ensure that proper controls and procedures are being followed.

The division accomplished the following:

Received the Certificate of Excellence in Financial Reporting for the period ended June 30, 2004, awarded by the Government Finance Officers Association following an extensive review process.

Coordinated testing and installation of major upgrade to Munis financial accounting software.

Property Assessment

The Property Assessment Division administers an ad valorem tax program in compliance with State Statutes. It compiles the annual Grand List of taxable and exempt property including the valuation and revaluation of real estate, motor vehicles and business personal property.

The 2004 Grand List Taxable Grand List totaled \$2,970,253,680, a 2.1% increase over the previous year.

A total of \$1,243,800 in assessment credits were issued to 39 town farms under the Town's newly adopted Farm Building Exemption program.

The Town received a \$37,500 state grant for the successful completion of the 2002 revaluation through the use of a Computer Assisted Mass Appraisal system

Revenue Collection

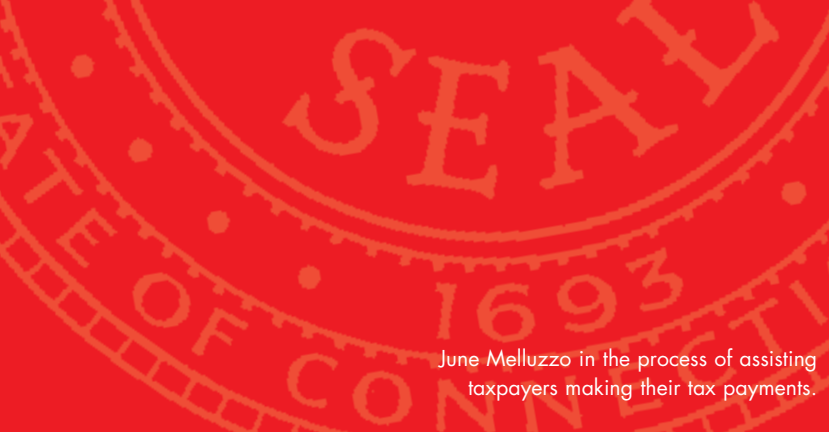
The Collector of Revenue's office is responsible for the timely collection of funds necessary to support both governmental and educational services. Those funds account for over 85% of the Town's annual budget.

- Taxes and fees for the fiscal year 2004/2005 totaled \$90,083,939.
- Sewer charges and fees totaled \$2,162,408.
- Back taxes collected totaled \$273,942.
- Accomplished a tax collection rate of 99.3% on current levy.

Town Clerk

The Town Clerk's Office serves as the center for public records for the residents of the community and their government and is responsible for maintaining many public records including land records, vital statistics, military discharges, notary public registrations, liquor permits, trade name certificates, meeting schedules, and agendas and minutes of the numerous boards and commissions, in addition to administering elections and issuing various licenses. Most all of the functions of the office are governed by state statute and town charter, and the office is a major collector of revenue for the State of Connecticut as well as for the Town.

(continued on page 30)



June Melluzzo in the process of assisting taxpayers making their tax payments.



Administrative Services

Town Clerk *(continued)*

The office collected approximately \$1,999,700 in revenue for the State and \$1,259,000 for the Town in fiscal year 2003/2004.

Commenced with processing Veteran Discharges on the New Vision counter recording system in May 2004 with other areas of processing to commence in the next fiscal year.

In December 2004 installed on two work stations BAS Licensing Software for marriage, sporting and dog license issuing which provides for the printing, indexing and generating of the various monthly, quarterly and annual State reports required by law.

Qualified for and received a \$12,000 Historic Preservation grant from the State of Connecticut and digitized land records images back in time from 1972 to 1690.

Applied for a \$12,000 Historic Preservation grant from the State of Connecticut for a land record re-indexing project, which funds are to be awarded and the project is to be completed in the next fiscal year.

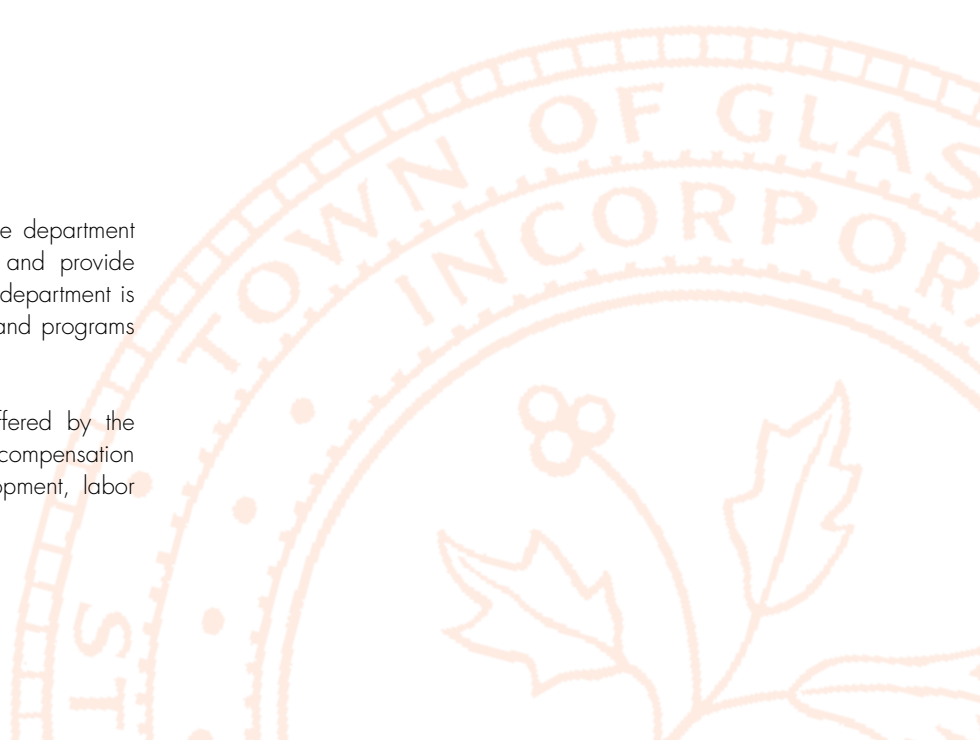
The Customer Service Center, located on the ground level of Town Hall, is a part of the Human Resources Department. Aside from the human resources function of accepting applications and sending out communications to applicants, it provides a welcome kit to new residents and assists the residents and visitors with their questions and concerns about Glastonbury. It also assists with transfer station permits, water test kits, pool passes, and notary services.

Human Resources

Human Resources

The Human Resources Department is a full service department designed to meet the needs of our employees and provide services to the public. As such, the mission of the department is to administer all of the human resources services and programs to the Town's workforce.

Some of the principal services and activities offered by the Human Resources Department are: recruitment, compensation and classification, employee training and development, labor relations and benefits.



TOWN OF GLASTONBURY

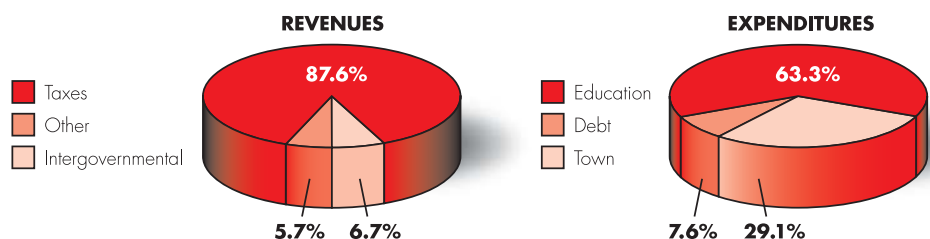
FINANCIALS

TOWN OF GLASTONBURY, CONNECTICUT STATEMENT OF REVENUES, EXPENDITURES AND CHANGES IN FUND BALANCE BUDGETARY BASIS – BUDGET AND ACTUAL – GENERAL FUND

For the Year Ended June 30, 2005

	Budgeted Amounts Original	Final	Budgetary Basis 2005	Actual Variance With Final Budget Positive (Negative)
REVENUES				
Property taxes	\$90,691,775	\$90,691,775	\$90,609,468	(\$82,307)
Licenses and permits	683,500	683,500	1,169,354	485,854
Intergovernmental	5,674,952	5,674,952	6,989,468	1,314,516
Charges for services	2,125,990	2,125,990	2,493,371	367,381
Other revenue	1,691,564	1,691,564	2,339,586	648,022
Total revenues	100,867,781	100,867,781	103,601,247	2,733,466
EXPENDITURES				
Current:				
General government	2,119,644	2,186,418	2,137,596	48,822
Community development	1,657,778	1,631,358	1,578,517	52,841
Administrative services	4,646,744	4,704,304	4,552,728	151,576
Public safety	7,908,431	8,007,775	7,935,880	71,895
Physical services	5,134,982	5,224,658	5,165,005	59,653
Sanitation	2,108,581	2,130,013	1,959,488	170,525
Human services	1,840,509	1,875,575	1,767,502	108,073
Leisure/culture	4,387,307	4,399,944	4,376,460	23,484
Contingency	175,000	40,059	932	39,127
Education	63,070,146	64,250,670	64,168,743	81,927
Debt service	7,660,051	7,780,051	7,739,670	40,381
Total expenditures	100,709,170	102,230,825	101,382,521	848,304
Revenues over (under) expenditures	158,611	(1,363,044)	2,218,726	3,581,770
OTHER FINANCING SOURCES (USES)				
Transfers in	1,861,389	1,876,773	1,204,424	(672,349)
Transfers out	(2,020,000)	(2,027,500)	(2,027,500)	- 0
Total other financing sources (uses)	(158,611)	(150,727)	(823,076)	(672,349)
Net change in fund balance	\$- 0	\$(1,513,771)	\$1,395,560	\$2,909,421
FUND BALANCE, beginning			9,125,380	
FUND BALANCE, ending			\$10,521,030	

A complete copy of the financial report is available for review at Town Hall.



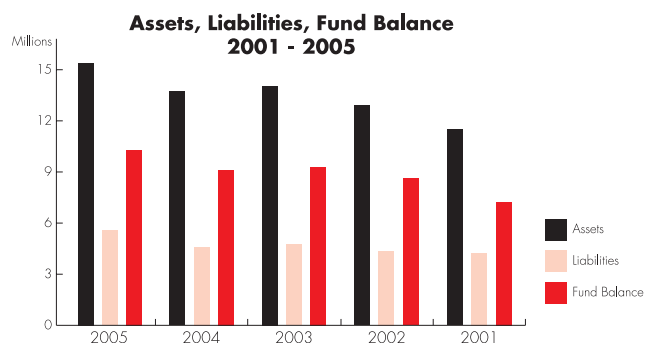
TOWN OF GLASTONBURY

FINANCIALS *(continued)*

TOWN OF GLASTONBURY, CONNECTICUT GENERAL FUND – BALANCE SHEET

June 30, 2005 With Comparative Totals for 2004

	2005	2004
ASSETS		
Cash and cash equivalents	\$14,765,660	\$12,980,434
Receivables:		
Property taxes	406,174	348,641
Other	672,449	472,313
Inventory	168,352	163,259
Other assets	17,526	9,968
Total assets	\$16,030,161	\$13,974,615
LIABILITIES AND FUND BALANCE		
Accounts and other payables	\$2,594,381	\$2,597,139
Due to developers for escrow deposits	1,650,520	1,179,943
Due to others for escrow deposits	479,355	337,720
Deferred revenue	784,875	734,433
Total liabilities	5,509,131	4,849,235
Fund Balance		
Reserved for encumbrances	240,539	122,425
Reserved for inventory	168,352	163,259
Reserved for capital outlay	15,598	36,716
Unreserved:		
Designated for insurance	275,000	275,000
Designated for subsequent year's expenditures	550,000	550,000
Designated for specific purposes	23,193	41,620
Undesignated	9,248,348	7,936,360
Total fund balance	10,521,030	9,125,380
Total liabilities and fund balance	\$16,030,161	\$13,974,615



TOWN OF GLASTONBURY

TOWN OFFICIALS - Prior to November 2005 Election

Board of Education

Lorraine Marchetti
Jeremy Grieveson
Dr. Stanton Avitabile
Richard C. Brown _
Patricia Saddle mire
Timothy Coon
James Zeller
lynn Onderko

Board of Finance

Diane L. Northrop •
James R. McIntosh *
Robert W. Jenkins
Walter F. Hemlock
"Gus" Constantine
Peter B. Deich

Board of Assessment Appeals

David Molycka •
Robert D. Bowden
Dennis Cavanaugh
Bernard J. Herpst
Forbes Warren
Robert Vacchelli
Eileen Dobensky

Bldg. Board of Appeals/ Code Review Committee

Calvin J. Carini
James W., Dutton
Martin Loughlin
John S. Sardo
Graham Tyrol

Commission on Aging

William McGaw, Jr.
Mary Abel
Nancy Kent
Susanne Dock
Ernest F. Reale
Eva Bowden
Audrey Quinlan

Community Beautification Commission

Elizabeth Payton
Robert G. Shipman _
Donald B. Reid
Linda DeGroff
Della Winans
Lewis Middleton
David Flattery

Conservation Commission

Kim McClain
Judy Harper •
Charles J. Reed
James Cole
James Bingham
Gerhard R. Schade
William Patrick

Economic Development Commission

Gretchen Deans
David M. Hallowes _
Raymond A. Dolan
Anthony Lazzaro, Jr.
Michael Botelho
Caren Kittredge
Jay Sattler

Ethics Commission

Alexandrina (Sandy) Sergio
Alan R. Spier
Nancy Thomas
Patrick Treacy
William H. Paetzold
Alternates:
Reginald L. Babcock
John Sweeney

Fair Rent Commission

Lucille Jonah
Joan Palatine
Allen Karp
Andrea Broder
John C. Hilton
David Evans
Stephen Oppenheim

Fine Arts Commission

Doris O'Rourke
Helen Litwin
Dianne Grinvalsky
Sandra MacGregor
Catherine Carlone _
Sandra Hakanson

Fire Commission

Gilbert D. Spencer
James W. Dutton
Brian E. Tyrol
Raymond Dolan
Arnold H. Higgins
Richard W. French, Jr. •

Historic District Commission

Mary Lou Barrett
Nanette Navarro
E. Marston Moffat
Dr. Trish Manfredi
Michael J. Stassen
Alternates:
Dorothy C. Cameron
Courtney MacDonald
Barbara Theurkauf

Housing Code of Appeals

Nelson C. L. Brown
Dr. Michael Lepore
W. Michael Low

Human Relations Commission

Susan Sit
Patricia A. Darling •
John C. Glezen
Joan Kemble
Virginia Hajek

Incorporators/Free Academy

Richard Mihm
Patricia Saddle mire
John Waterhouse

Insurance Advisory Committee

Robert J. Hager
Stephen J. Ludwig
Ronald E. Palmer
David Hoopes
Thomas Mullaney
Patricia Shea-Lovell
Stephen Jones

Personnel Appeals Board

Elizabeth "Betty" McLaughlin
Samuel W. McGill
Glenda Rose
Richard Vitterelli
Keith Shaw

Public Buildings Commission

Stephen Shipman
David Cox
Lisbeth Becker
Suzanne Galvin
Charles I. Monzeglio
Liaisons:
Gus Constantine
(Bd. Of Finance)

Public Housing Authority

James F. Noonan
Jeanette Pollard
Richard Inman
Zelda Lessne
Judith Jaskulski

Recreation Commission

Lynn Hazard
Dennis Kerrigan _
H. James Boice *
Allyson Ravosa
Brian Summers
Anthony Gesnaldo

Safety Committee

Brian Ellis
Bernard J. Herpst
Theodore R. Paulding, Jr.
Daniel Scott
Jeff MacDonald
Kathleen Kiernan-Pagani
Robert Hicks

Town Council

Susan Karp •
Walter J. Cusson
Kevin P. Graff
Barbara C. Wagner
Whit C. Osgood *
Marti Curtiss
Kurt P. Cavanaugh
Carol H. Ahlschlager
Thomas J. Kehoe

Town Plan & Zoning Commission

Sudhir A. Shah
Patricia V. Low
Sharon Jagel _
William Finn
Steven Ryan
Sharon Purtill
Alternates:
Patricia Bussa
Raymond Hassett
Eric Schaefer

Water Pollution Control Authority

Bradley Northrop
John C. Gavin
Louis M. Accornero
Nils Carlson
William H. Habicht
Frank J. Laporte III
Helen D. Stern

Welles Turner Library Board

Glenda Rose
Vanessa Kerrigan
Laurie Paternoster _
Lillian Levin
Elizabeth Fitzpatrick
Karen Fecko

Youth & Family Services Commission

Tamara Vrabely
Angela Phelan
Luci Leone *
Tricia Dougherty _
Susan Calabro
Ken Adamson
Lew Lassow
Non-Voting Members:
Father Kevin Cavanaugh
(St. Paul's Church)
Dr. Stanton Avitabile,
Glas. Bd. Of Education,
Keith O'Brien,
Glastonbury Police Dept.

Zoning Board of Appeals

Michael H. Clinton
Sandra O'Leary
Jeanie Babineau
John C. Linderman
James Van Law, Jr.
Alternates:
Charles L. Monaco
Michael Fitzpatrick
Jeannie Loughlin

Connecticut River Assembly

Richard Mihm

Cox Cable Advisory Council

Patricia Darling
Lucretia Seidel
Thomas Majek
Richard C. Brown
(Bd. Of Education)

Agricultural Advisory Committee

Mario Accornero
Henry Rose
J. Baylis Earle •
Louis Bussa
Richard Ferrari
Deborah McIntosh
Michael Longo

Great Pond Stewardship Committee

Paul Kehoe
Lynn Hazard
David Gumbart
Dennis McInerney
Gerhard Schade •
Whit Osgood
Thomas Kehoe
Marti Curtiss
Judy Harper

CRCOG Transportation

Kurt P. Cavanaugh
Daniel A. Pennington (alt.)

Greater Hartford Tourism District

Katherine Kennedy

• Chairman
* Vice Chair

TOWN OF GLASTONBURY

TOWN OFFICIALS - Following November 2005 Election

Board of Education

Lorraine Marchetti
Jeremy Grieveson
Elizabeth Rogan
Richard C. Brown
Pandora "Pandy" Wohler
Timothy P. Coon
James R. Zeller
lynn A. Onderko

Board of Finance

Diane L. Northrop
James R. McIntosh
Robert W. Jenkins
Walter F. Hemlock
Constantine Constantine
Peter B. Deich

Board of Assessment Appeals

David Motycka
Robert D. Bowden
Dennis C. Cavanaugh
Bernard J. Herpst
Forbes Warren
Robert F. Vacchelli
Eileen M Dobensky

Bldg. Board of Appeals/ Code Review Committee

Calvin J. Carini
James W. Dutton
Robert Kaelin
John S. Sardo
Graham Tyrol

Commission on Aging

William McGaw Jr.
Susanne Dock
Mary Abel
Nancy Kent
Ernest F. Reale
Eva Bowden
Janeen Dolan

Community Beautification Commission

W. Gilbert Wolf
Robert G. Shipman
Donald B. Reid
Linda DeGroff
Della Winans
Lewis Middleton
David Flattery

Conservation Commission

Kim McClain
Judy Harper
Dennis McInerney
James Bingham
Gerhard R. Schade
William Patrick
Helen D. Stern

Cox Cable Advisory Council

Patricia Darling
Christopher Fraleigh
Martin Loughlin
Richard C. Brown

Economic Development Commission

Gretchen Deans
Anthony L. Lazzaro, Jr.
Michael Botelho
David M. Hallowes
Raymond A. Dolan
Jay Sattler
Caren Kittredge

Ethics Commission

Alexandrina (Sandy) Sergio
Alan R. Spier
Nancy Thomas
Patrick Treacy
Angela Bull
Alternates:
Reginald L. Babcock

Fair Rent Commission

Lucille Jonah
Judith A. Stearns
Allen Karp
Andrea Broder
John C. Hilton
Stephen D. Oppenheim
David Evans

Fine Arts Commission

Doris O'Rourke
Helen Litwin
Dianne Hemlock Grinvalsky
Catherine Carlone
Heather Summers
Sandra MacGregor
Diane Lacy

Fire Commission

Gilbert D. Spencer
James W. Dutton
Rocco N. Fierravanti
Raymond A. Dolan
Arnold H. Higgins
Richard W. French, Jr.

Historic Distric Commission

Mary Lou Barrett
Nanette Navarro
Michael Stassen
Steven Snyder
Dr. Trish Manfredi
Alternates:
Courtney MacDonald
Barbara Theurkauf
Dorothy C. Cameron

Housing Code of Appeals

Nelson C. L. Brown
Kristine Brown
Dr. Michael F. Lepore
W. Michael Low

Human Relations Commission

Susan Sit
Joan Kemble
Patricia A. Darling
John C. Glezen
Virginia Hajek

Incorporators/Free Academy

Richard Mihm
Patricia Saddlemire
John Waterhouse

Insurance Advisory Committee

Robert J. Hager
Stephen J. Ludwig
Ronald E. Palmer
David Hoopes
Thomas Mullaney
Patricia Shea-Lovell
Stephen L. Jones

Greater Hartford Tourism District

Katherine C. Kennedy

Personnel Appeals Board

Elizabeth A. (Betty) McLaughlin
Robert W. Rulevich
Glenda Rose
Richard Vitterelli
Keith Shaw

Public Buildings Commission

Lisbeth Becker
Charles I. Monzeglio
Stephen Shipman
David B. Cox
Suzanne S. Galvin
Liaisons:
Gus Constantine

Public Housing Authority

Donald H. Foberg
James F. Noonan
Richard H. Inman
Zelda Lessne
Judith Jaskulski

Recreation Commission

Allyson Ravosa
Michael C. Collins
Dennis Kerrigan
Brian Summers
Michael H. Clinton
H. James Boice

Safety Committee

Brian Ellis
Bernard J. Herpst
Theodore R. Paulding, Jr.
Lewis Lassow
Daniel B. Scott
Kathleen Kiernan-Pagani
Robert Hicks

Town Council

Susan Karp
Carol H. Ahlschlager
Whit C. Osgood
Kurt P. Cavanaugh
Marti Curtiss
Stewart "Chip" Beckett III
Barbara C. Wagner
Thomas J. Kehoe
Carolyn M. Treiss

Town Plan & Zoning Commission

Patricia V. Busa
Patricia V. Low
Sharon Jagel
William Finn
Steven B. Ryan
Sharon H. Purtil
Alternates:
Raymond Hasset
Eric W. Schaefer
Keith S. Shaw

Water Pollution Control Authority

Bradley Northrop
John C. Gavin
Louis M. Accornero
Nils Carlson
William H. Habicht
Frank J. LaPorte III

Welles Turner Library Board

Elizabeth Fitzpatrick
Vanessa Kerrigan
Glenda Rose
Patricia Saddlemire
Laurie Paternoster
Diane Hemlock

Youth & Family Services Commission

Patrick Sullivan
Tamara Vrabely
Scott Heaney
Angela Phelan
Natalie Cook
Joanne R. Schneider
Tricia Dougherty
Susan Calabro
Non-Voting Members:
Father Kevin Cavanaugh
Sergeant Keith O'Brien

Zoning Board of Appeals

Michael T. Fitzpatrick
James T. Van Law Jr.
Sandra O'Leary
Jeanie G. Babineau
John C. Linderman
Alternates:
Charles L. Monaco
Anthony Gesinaldo
Jeannie S. Loughlin

Connecticut River Assembly

Richard Mihm

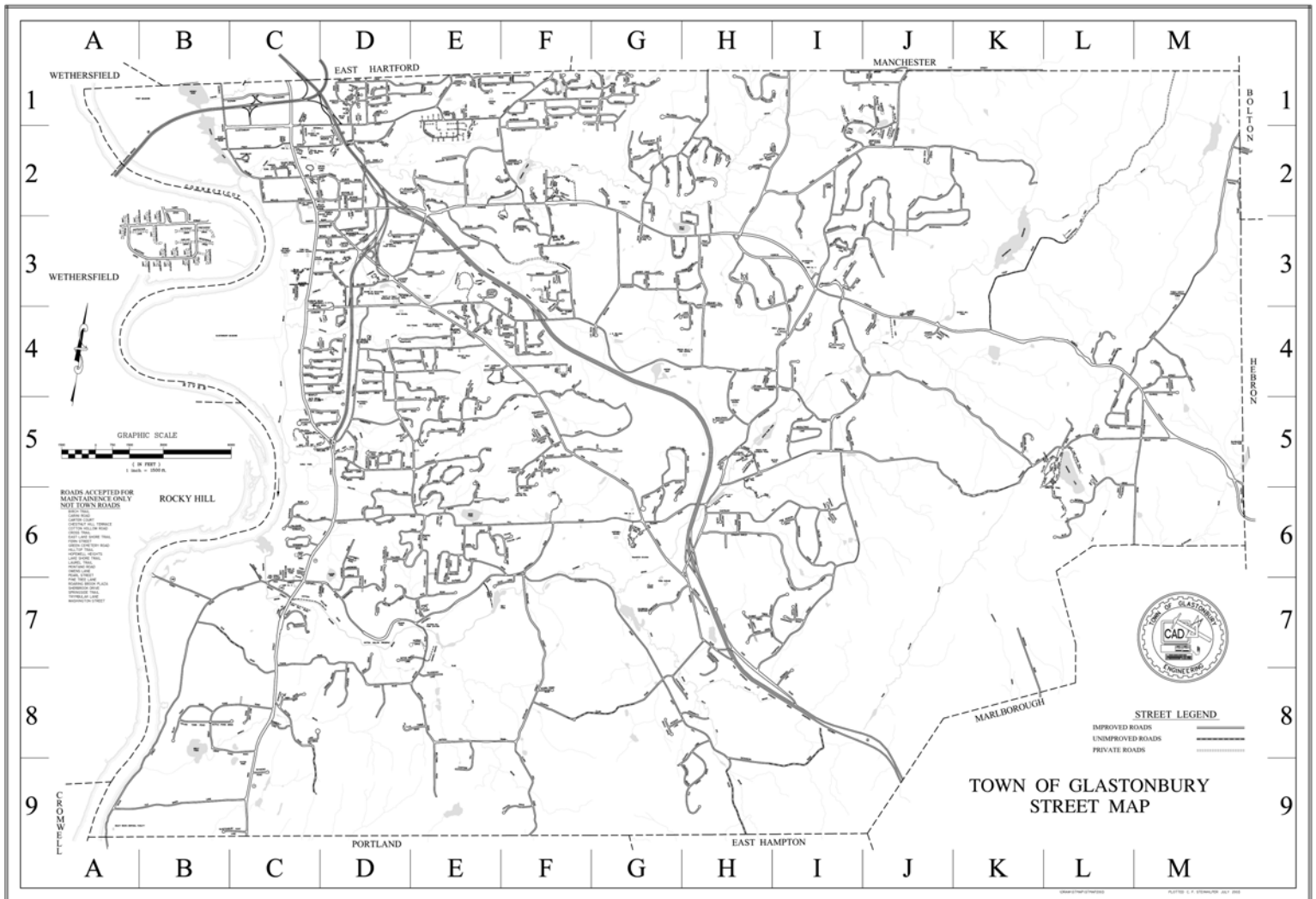
Agricultural Advisory Committee

Mario Accornero
Henry Rose
J. Baylis Earle
Louis Busa
Richard Ferrari
Deborah McIntosh
Michael Longo

Great Pond Stewardship Committee

Gerhard R. Schade
Paul Kehoe
Dennis Kerrigan
Dennis McInerney
David Gumbart
Barbara C. Wagner
Chip Beckett
Marti Curtiss
Judy Harper
Tom Mocko

GLASTONBURY TOWN MAP



Annual Report Production Notes

Concept + Design: MKK Advertising, LLC
 Contributing Photographers: Kenith Leslie & Wendy Mullaly
 Printing: Wolf ColorPrint



Town of Glastonbury
Town Hall
2155 Main Street
Glastonbury, CT 06033
860-652-7710
www.glasct.org